



2662 Diamondback Drive, Berthoud, CO 80513 - Upper Level



Single Family



1184 SQFT



2 Beds



2/5 Baths



1 Car



0.06 Acre

PROPERTY DETAILS

Outdoor enthusiasts will enjoy the entertainment set up out back with TV hook up. Not to mention the neighborhood park, tennis courts, pool, gym, and choice of two dog parks. The detached garage is pre-wired for electrical car hookup and there is also concrete parking pad right next to it. Interior Features include: stainless steel appliances w/ gas range, Soft close cabinets/drawers, 42 inch cabinets, pendant lights, tankless H2O heater and hardwood floors.



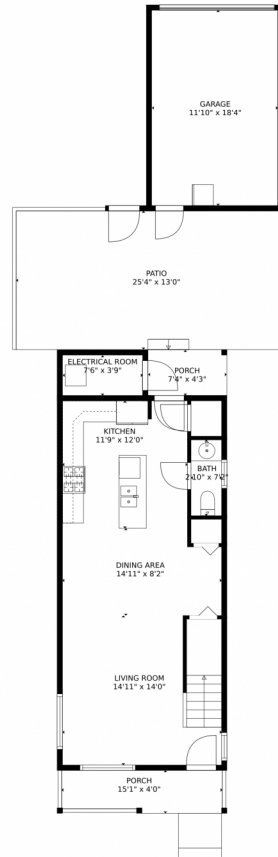
Brandon Bidwell
970-215-1573
bidwell@windermere.com



Scan code
for more
property
details



2662 Diamondback Drive, Berthoud, CO 80513 – Main Level



GROSS INTERNAL AREA
FLOOR 1: 514 sq. ft, FLOOR 2: 540 sq. ft
EXCLUDED AREAS: ELECTRICAL ROOM: 29 sq. ft, GARAGE: 217 sq. ft, PORCH: 89 sq. ft,
PATIO: 329 sq. ft
TOTAL: 1054 sq. ft
MEASUREMENTS CALCULATED BY V1Photos.COM ARE DEEMED HIGHLY RELIABLE BUT NOT GUARANTEED.



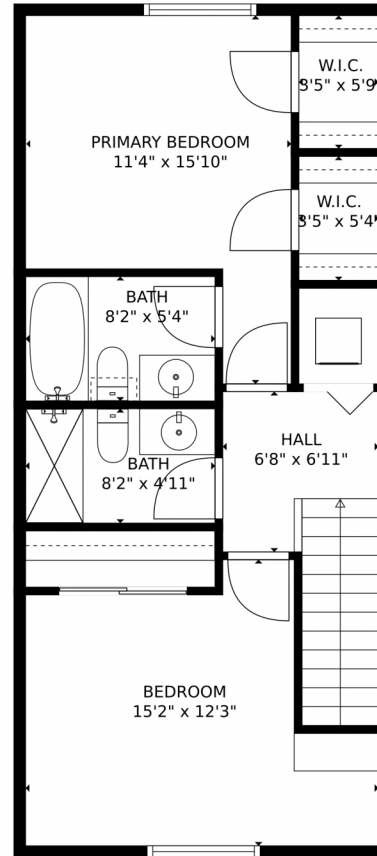
Disclaimer: Sizes and Dimensions are Approximate, Actual May Vary.



Brandon Bidwell
970-215-1573
bidwell@windermere.com



2662 Diamondback Drive, Berthoud, CO 80513 – Upper Level



GROSS INTERNAL AREA
FLOOR 1: 514 sq. ft, FLOOR 2: 540 sq. ft
EXCLUDED AREAS: ELECTRICAL ROOM: 29 sq. ft, GARAGE: 217 sq. ft, PORCH: 89 sq. ft,
PATIO: 329 sq. ft
TOTAL: 1054 sq. ft
MEASUREMENTS CALCULATED BY V1Photos.COM ARE DEEMED HIGHLY RELIABLE BUT NOT GUARANTEED.

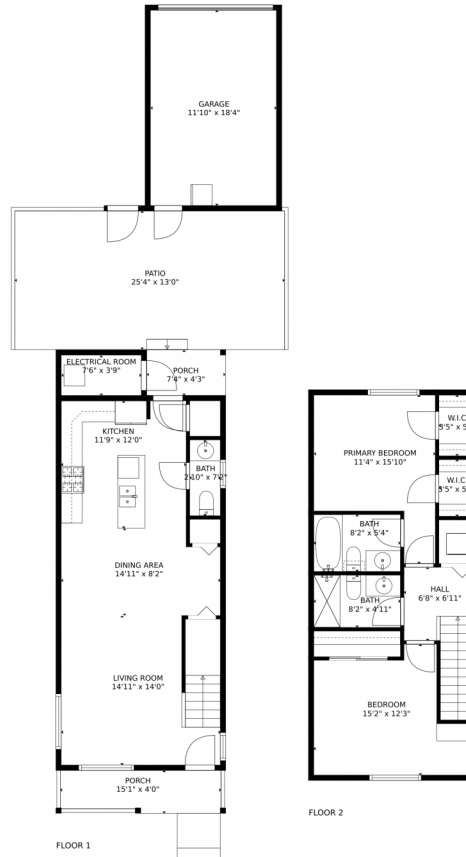
Disclaimer: Sizes and Dimensions are Approximate, Actual May Vary.



Brandon Bidwell
970-215-1573
bidwell@windermere.com



2662 Diamondback Drive, Berthoud, CO 80513 – All Levels



GROSS INTERNAL AREA
FLOOR 1: 514 sq. ft, FLOOR 2: 540 sq. ft
EXCLUDED AREAS: ELECTRICAL ROOM: 29 sq. ft, GARAGE: 217 sq. ft, PORCH: 89 sq. ft.
PATIO: 329 sq. ft
TOTAL: 1054 sq. ft
MEASUREMENTS CALCULATED BY V1Photos.com ARE DEEMED HIGHLY RELIABLE BUT NOT GUARANTEED.



Disclaimer: Sizes and Dimensions are Approximate, Actual May Vary.



Brandon Bidwell
970-215-1573
bidwell@windermere.com

