

Single Family

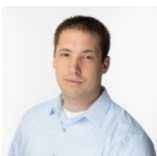
2278 SQFT

5 Beds

3/1 Baths

2 Car

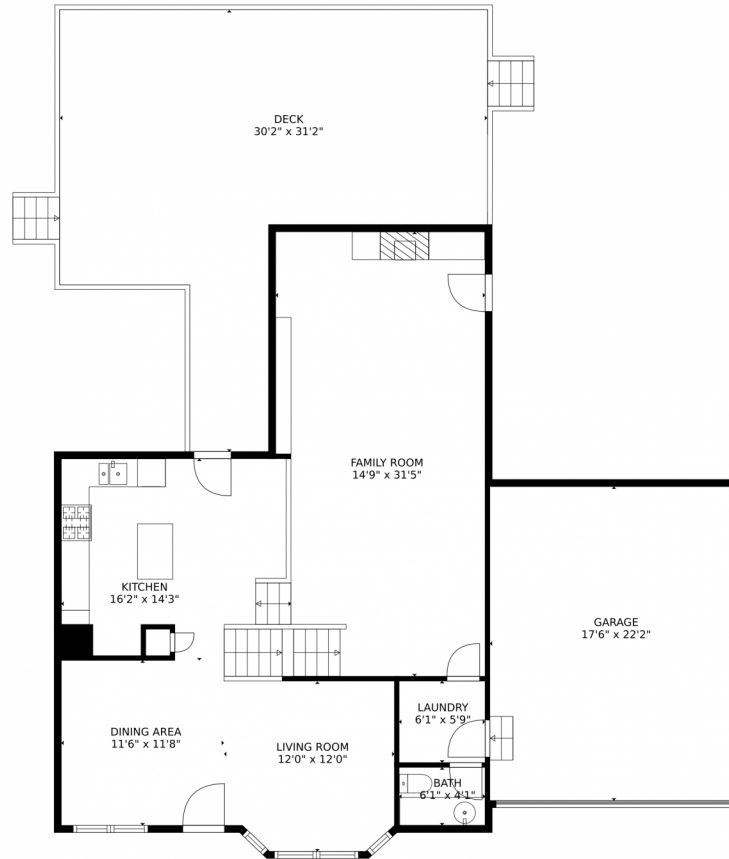
0.71 Acre



Jordan Kermes  
952-956-2958  
jordan@kermesllc.com



# 6040 Red Hill Circle, Colorado Springs, CO 80919 – Main Level



GROSS INTERNAL AREA  
Below Ground: 424 sq. ft, FLOOR 2: 1027 sq. ft, FLOOR 3: 800 sq. ft  
EXCLUDED AREAS: ELECTRICAL ROOM: 39 sq. ft, GARAGE: 388 sq. ft, DECK: 586 sq. ft  
TOTAL: 2251 sq. ft  
MEASUREMENTS CALCULATED BY V1Photos.com ARE DEEMED HIGHLY RELIABLE BUT NOT GUARANTEED.



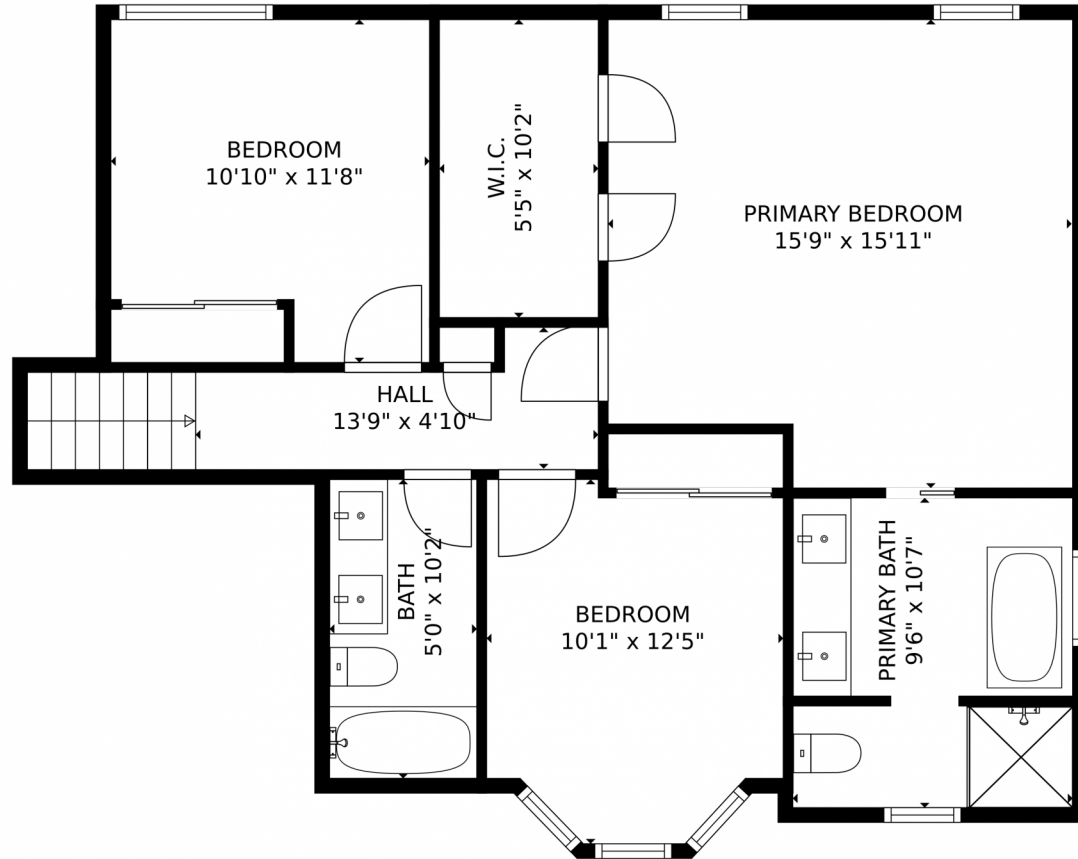
Disclaimer: Sizes and Dimensions are Approximate, Actual May Vary.



**Jordan Kermes**  
952-956-2958  
jordan@kermesllc.com



6040 Red Hill Circle, Colorado Springs, CO 80919 – Upper Level



GROSS INTERNAL AREA  
Below Ground: 424 sq. ft, FLOOR 2: 1027 sq. ft, FLOOR 3: 800 sq. ft  
EXCLUDED AREAS: ELECTRICAL ROOM: 39 sq. ft, GARAGE: 388 sq. ft, DECK: 586 sq. ft  
TOTAL: 2251 sq. ft  
MEASUREMENTS CALCULATED BY V1Photos.COM ARE DEEMED HIGHLY RELIABLE BUT NOT GUARANTEED.



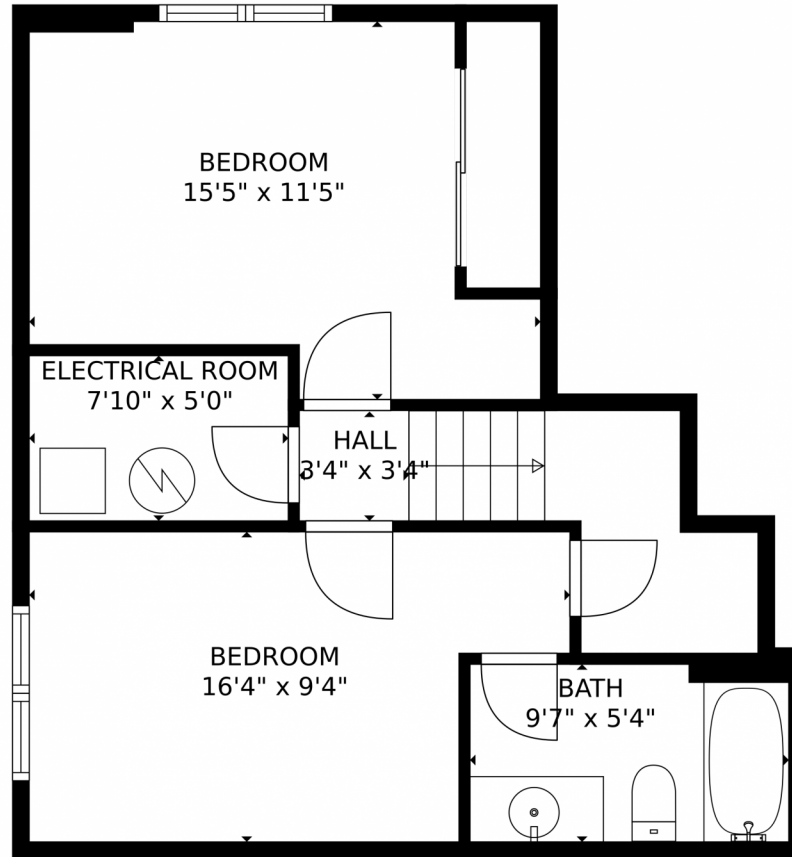
Disclaimer: Sizes and Dimensions are Approximate, Actual May Vary.



**Jordan Kermes**  
952-956-2958  
jordan@kermesllc.com



6040 Red Hill Circle, Colorado Springs, CO 80919 – Lower Level



GROSS INTERNAL AREA  
Below Ground: 424 sq. ft, FLOOR 2: 1027 sq. ft, FLOOR 3: 800 sq. ft  
EXCLUDED AREAS: ELECTRICAL ROOM: 39 sq. ft, GARAGE: 388 sq. ft, DECK: 586 sq. ft  
TOTAL: 2251 sq. ft  
MEASUREMENTS CALCULATED BY V1Photos.com ARE DEEMED HIGHLY RELIABLE BUT NOT GUARANTEED.



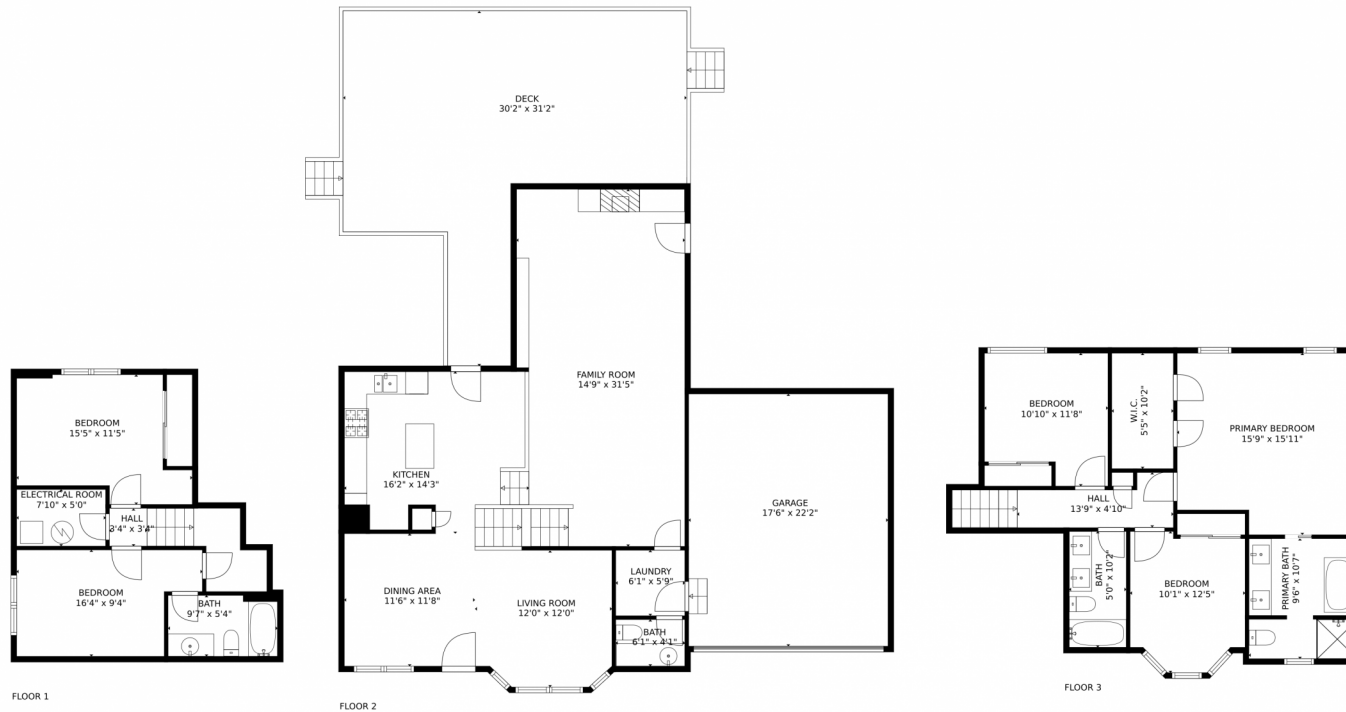
Disclaimer: Sizes and Dimensions are Approximate, Actual May Vary.



**Jordan Kermes**  
952-956-2958  
jordan@kermesllc.com



# 6040 Red Hill Circle, Colorado Springs, CO 80919 – All Levels



GROSS INTERNAL AREA  
Below Ground: 424 sq. ft, FLOOR 2: 1027 sq. ft, FLOOR 3: 800 sq. ft  
EXCLUDED AREAS: ELECTRICAL ROOM: 39 sq. ft, GARAGE: 388 sq. ft, DECK: 586 sq. ft  
TOTAL: 2251 sq. ft  
MEASUREMENTS CALCULATED BY V1Photos.COM ARE DEEMED HIGHLY RELIABLE BUT NOT GUARANTEED.



Disclaimer: Sizes and Dimensions are Approximate, Actual May Vary.



**Jordan Kermes**  
952-956-2958  
jordan@kermesllc.com



Scan code  
for more  
property  
details

