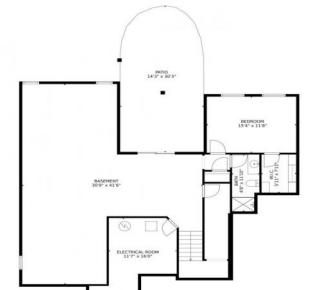





2794 Rising Moon Way, Castle Rock, CO 80109 - Basement



 Single Family

 4480 SQFT

 6 Beds

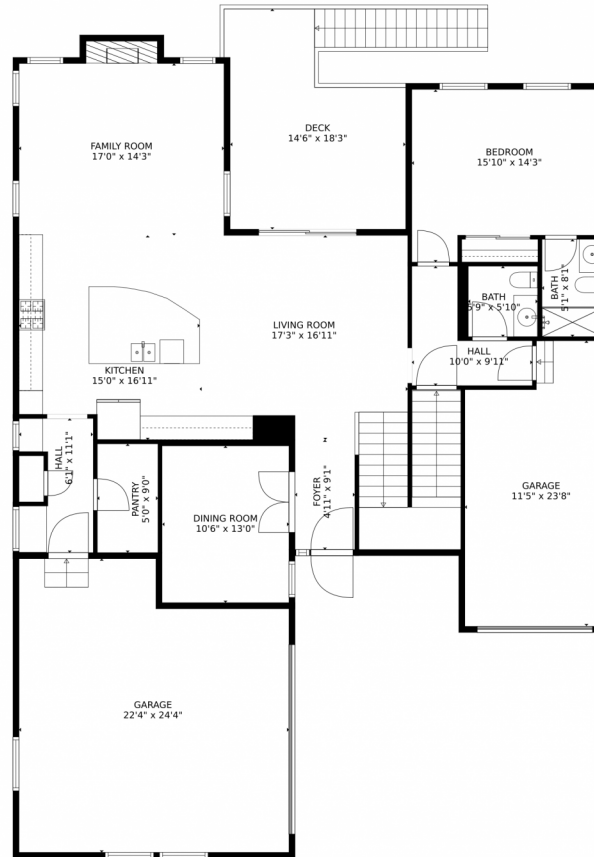
 5/1 Baths



**Taylor Haas**  
 303-665-7368  
 taylorh@coloradorpm.com  
<https://www.coloradorpm.com/available-rental-properties-denver>



# 2794 Rising Moon Way, Castle Rock, CO 80109 – 1st Floor



GROSS INTERNAL AREA  
Below Ground: 1243 sq. ft, FLOOR 2: 1562 sq. ft, FLOOR 3: 1619 sq. ft  
EXCLUDED AREAS: PATIO: 401 sq. ft, LOW CEILING: 68 sq. ft, ELECTRICAL ROOM: 162 sq. ft,  
DECK: 219 sq. ft, GARAGE: 746 sq. ft, FIREPLACE: 8 sq. ft,  
OPEN TO BELOW: 39 sq. ft  
TOTAL: 4424 sq. ft  
MEASUREMENTS CALCULATED BY V1Photos.com ARE DEEMED HIGHLY RELIABLE BUT NOT GUARANTEED.



Disclaimer: Sizes and Dimensions are Approximate, Actual May Vary.



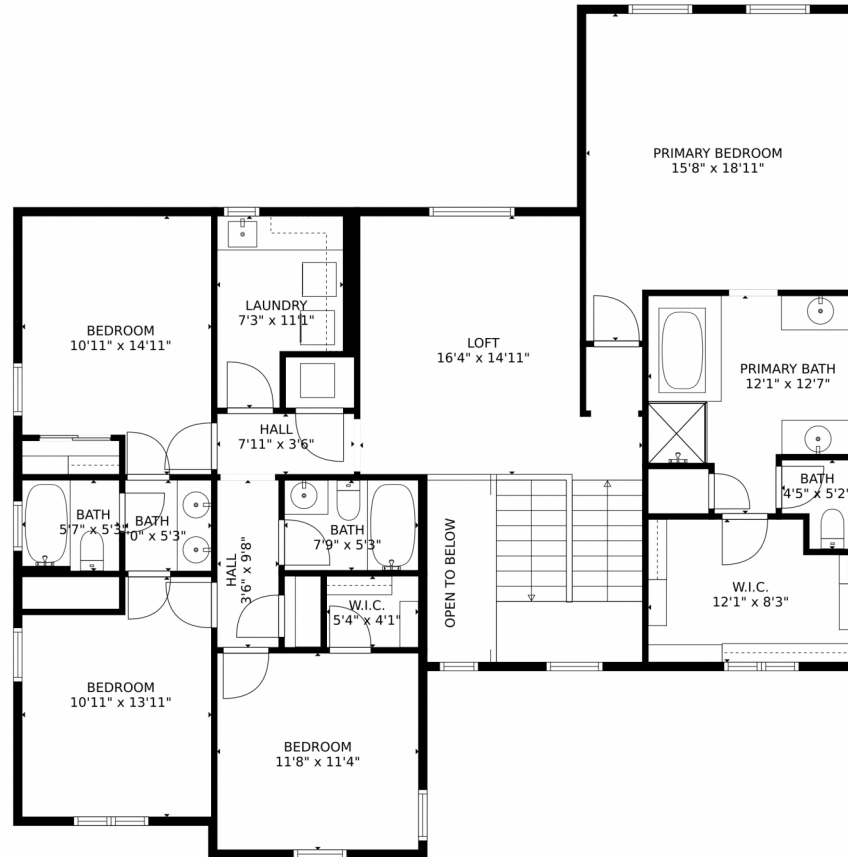
**Taylor Haas**  
303-665-7368  
taylorh@coloradorpm.com  
<https://www.coloradorpm.com/available-rental-properties-denver>



Scan code  
for more  
property  
details



# 2794 Rising Moon Way, Castle Rock, CO 80109 – 2nd Floor



GROSS INTERNAL AREA  
Below Ground: 1243 sq. ft, FLOOR 2: 1562 sq. ft, FLOOR 3: 1619 sq. ft  
EXCLUDED AREAS: PATIO: 401 sq. ft, LOW CEILING: 68 sq. ft, ELECTRICAL ROOM: 162 sq. ft,  
DECK: 219 sq. ft, GARAGE: 746 sq. ft, FIREPLACE: 8 sq. ft,  
OPEN TO BELOW: 39 sq. ft  
TOTAL: 4424 sq. ft  
MEASUREMENTS CALCULATED BY V1Photos.com ARE DEEMED HIGHLY RELIABLE BUT NOT GUARANTEED.



Disclaimer: Sizes and Dimensions are Approximate, Actual May Vary.



**Taylor Haas**  
303-665-7368  
taylorh@coloradorpm.com  
<https://www.coloradorpm.com/available-rental-properties-denver>



Scan code  
for more  
property  
details



# 2794 Rising Moon Way, Castle Rock, CO 80109 – All Floors



**GROSS INTERNAL AREA**  
 Below Ground: 1243 sq. ft, FLOOR 2: 1562 sq. ft, FLOOR 3: 1619 sq. ft  
**EXCLUDED AREAS:** PATIO: 401 sq. ft, LOW CEILING: 68 sq. ft, ELECTRICAL ROOM: 162 sq. ft,  
 DECK: 219 sq. ft, GARAGE: 746 sq. ft, FIREPLACE: 8 sq. ft,  
 OPEN TO BELOW: 39 sq. ft  
**TOTAL: 4424 sq. ft**  
MEASUREMENTS CALCULATED BY V1Photos.COM ARE DEEMED HIGHLY RELIABLE BUT NOT GUARANTEED.



Disclaimer: Sizes and Dimensions are Approximate, Actual May Vary.



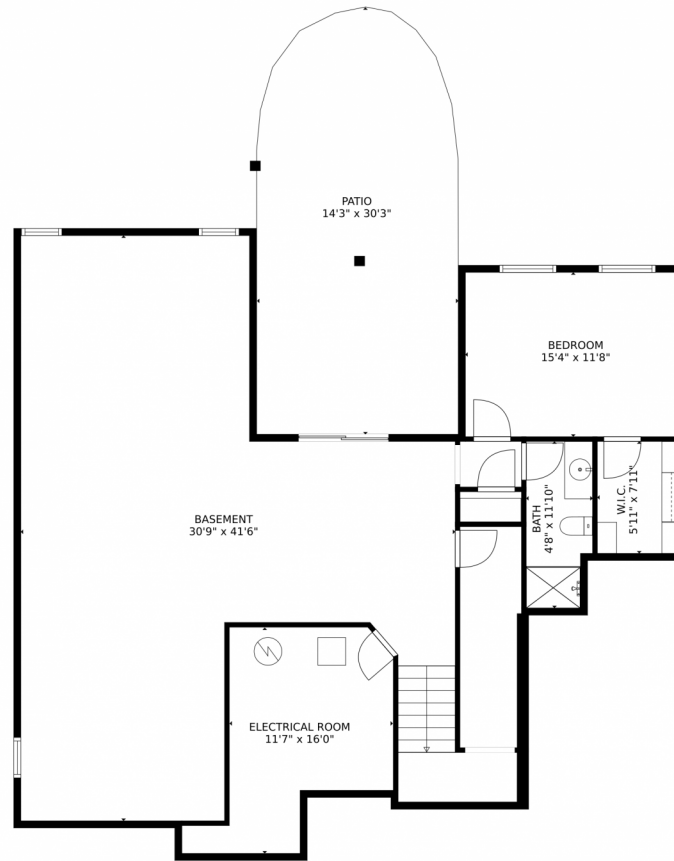
**Taylor Haas**  
 303-665-7368  
 taylorh@coloradorpm.com  
<https://www.coloradorpm.com/available-rental-properties-denver>



Scan code  
 for more  
 property  
 details



# 2794 Rising Moon Way, Castle Rock, CO 80109 – Basement



GROSS INTERNAL AREA  
Below Ground: 1243 sq. ft, FLOOR 2: 1562 sq. ft, FLOOR 3: 1619 sq. ft  
EXCLUDED AREAS: PATIO: 401 sq. ft, LOW CEILING: 68 sq. ft, ELECTRICAL ROOM: 162 sq. ft,  
DECK: 219 sq. ft, GARAGE: 746 sq. ft, FIREPLACE: 8 sq. ft,  
OPEN TO BELOW: 39 sq. ft  
TOTAL: 4424 sq. ft  
MEASUREMENTS CALCULATED BY V1Photos.COM ARE DEEMED HIGHLY RELIABLE BUT NOT GUARANTEED.



Disclaimer: Sizes and Dimensions are Approximate, Actual May Vary.



**Taylor Haas**  
303-665-7368  
taylorh@coloradorpm.com  
<https://www.coloradorpm.com/available-rental-properties-denv>



Scan code  
for more  
property  
details

