




 Single Family

 2897 SQFT

 4 Beds

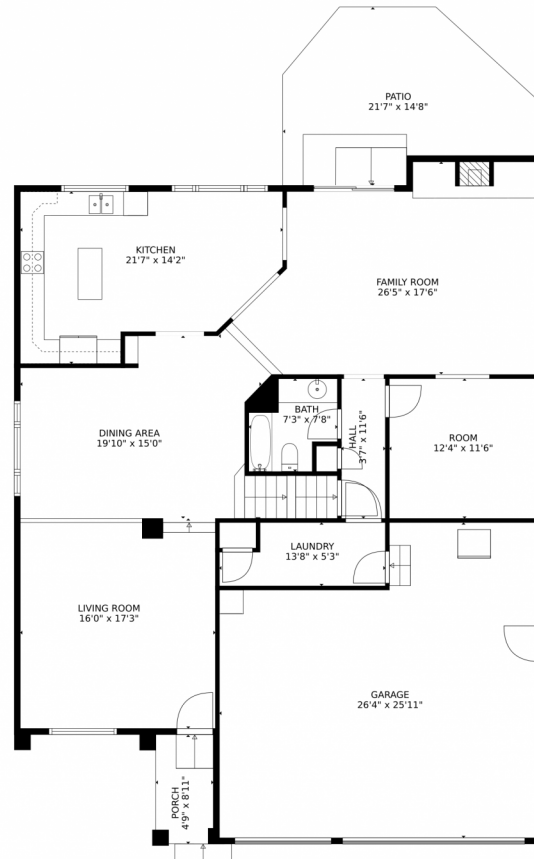
 3 Baths



Taylor Haas
303-665-7368
taylorh@coloradorpm.com
<https://www.coloradorpm.com/available-rental-properties-denver>



13884 Dogleg Ln., Broomfield, CO 80023 – Main Level



GROSS INTERNAL AREA
Below Ground: 0 sq. ft, FLOOR 2: 1529 sq. ft, FLOOR 3: 1490 sq. ft
EXCLUDED AREAS: UNFINISHED BASEMENT: 824 sq. ft, GARAGE: 605 sq. ft, PORCH: 42 sq. ft,
PATIO: 239 sq. ft, OPEN TO BELOW: 381 sq. ft
TOTAL: 3019 sq. ft
MEASUREMENTS CALCULATED BY V1Photos.COM ARE DEEMED HIGHLY RELIABLE BUT NOT GUARANTEED.



Disclaimer: Sizes and Dimensions are Approximate, Actual May Vary.



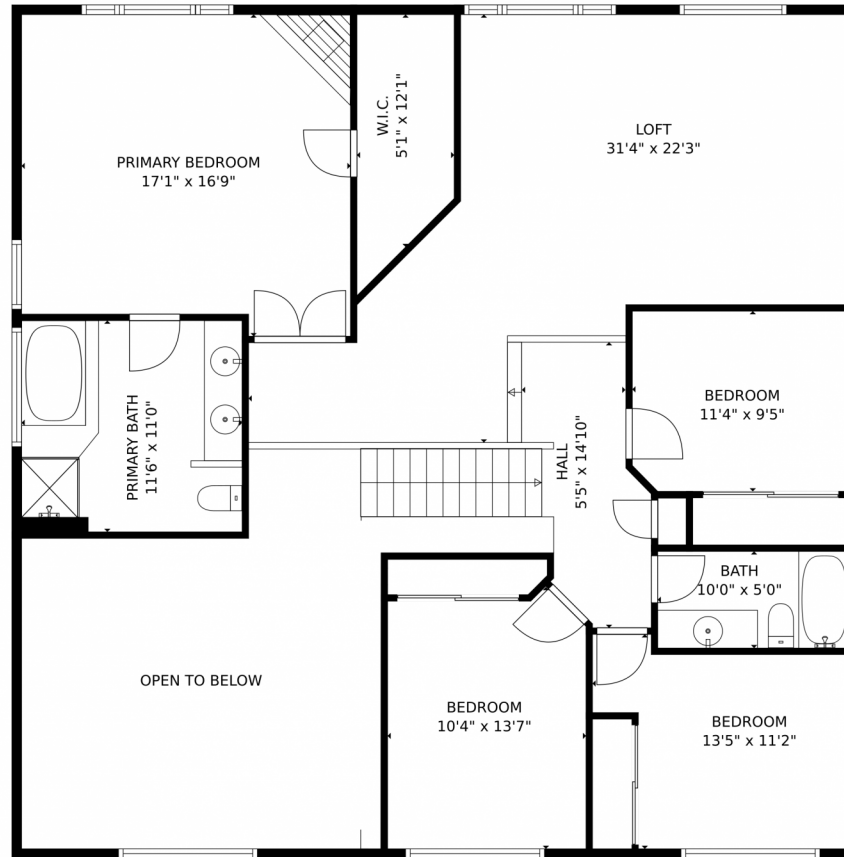
Taylor Haas
303-665-7368
taylorh@coloradorpm.com
<https://www.coloradorpm.com/available-rental-properties-denver>



Scan code
for more
property
details



13884 Dogleg Ln., Broomfield, CO 80023 – Upper Level



GROSS INTERNAL AREA
Below Ground: 0 sq. ft, FLOOR 2: 1529 sq. ft, FLOOR 3: 1490 sq. ft
EXCLUDED AREAS: UNFINISHED BASEMENT: 824 sq. ft, GARAGE: 605 sq. ft, PORCH: 42 sq. ft,
PATIO: 239 sq. ft, OPEN TO BELOW: 381 sq. ft
TOTAL: 3019 sq. ft
MEASUREMENTS CALCULATED BY V1Photos.com ARE DEEMED HIGHLY RELIABLE BUT NOT GUARANTEED.



Disclaimer: Sizes and Dimensions are Approximate, Actual May Vary.



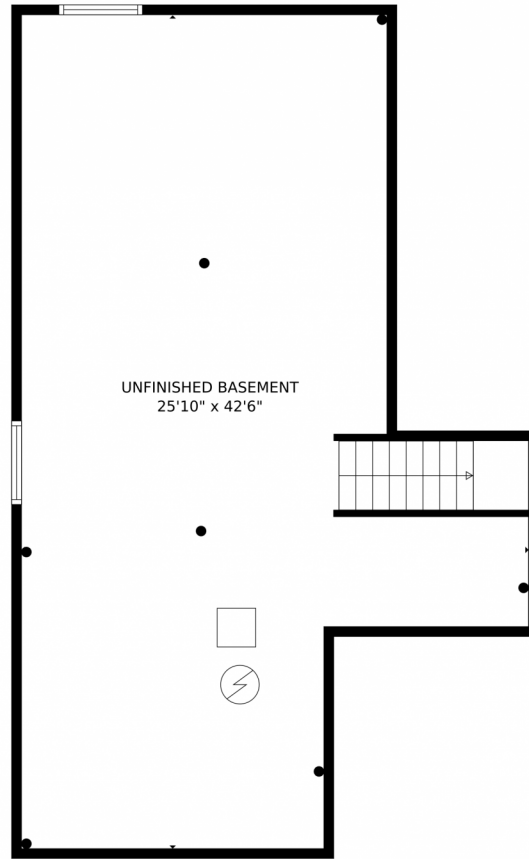
Taylor Haas
303-665-7368
taylorh@coloradorpm.com
<https://www.coloradorpm.com/available-rental-properties-denver>



Scan code
for more
property
details



13884 Dogleg Ln., Broomfield, CO 80023 – Lower Level



GROSS INTERNAL AREA
Below Ground: 0 sq. ft, FLOOR 2: 1529 sq. ft, FLOOR 3: 1490 sq. ft
EXCLUDED AREAS: UNFINISHED BASEMENT: 824 sq. ft, GARAGE: 605 sq. ft, PORCH: 42 sq. ft,
PATIO: 239 sq. ft, OPEN TO BELOW: 381 sq. ft
TOTAL: 3019 sq. ft
MEASUREMENTS CALCULATED BY V1Photos.COM ARE DEEMED HIGHLY RELIABLE BUT NOT GUARANTEED.



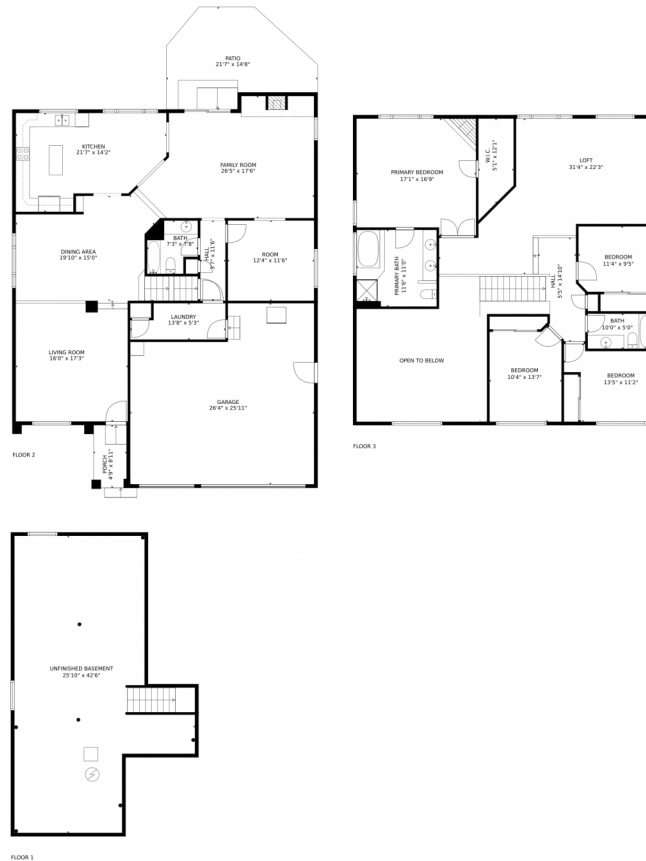
Disclaimer: Sizes and Dimensions are Approximate, Actual May Vary.



Taylor Haas
303-665-7368
taylorh@coloradorpm.com
<https://www.coloradorpm.com/available-rental-properties-denver>



13884 Dogleg Ln., Broomfield, CO 80023 – All Levels



GROSS INTERNAL AREA
Below Ground: 0 sq. ft, FLOOR 2: 1529 sq. ft, FLOOR 3: 1490 sq. ft
EXCLUDED AREAS: UNFINISHED BASEMENT: 824 sq. ft, GARAGE: 605 sq. ft, PORCH: 42 sq. ft,
PATIO: 239 sq. ft, OPEN TO BELOW: 381 sq. ft
TOTAL: 3019 sq. ft
MEASUREMENTS CALCULATED BY V1Photos.com ARE DEEMED HIGHLY RELIABLE BUT NOT GUARANTEED.



Disclaimer: Sizes and Dimensions are Approximate, Actual May Vary.



Taylor Haas
303-665-7368
taylorh@coloradorpm.com
<https://www.coloradorpm.com/available-rental-properties-denver>



Scan code
for more
property
details

