




 Single Family

 1600 SQFT

 2 Beds

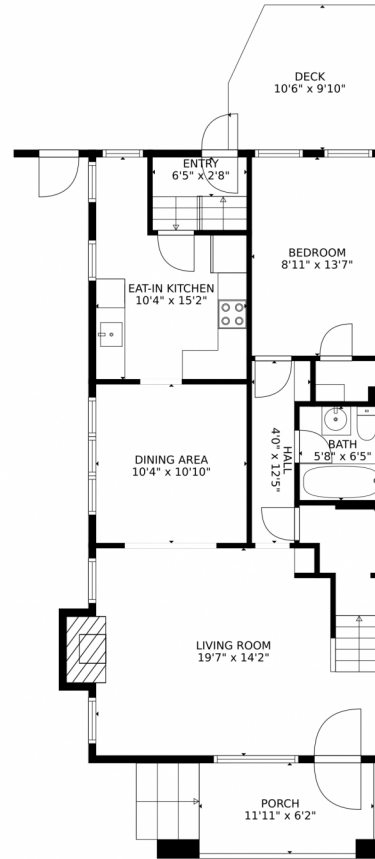
 2 Baths



Taylor Haas
303-665-7368
taylorh@coloradorpm.com
<https://www.coloradorpm.com/available-rental-properties-denv>



1342 South York St - #1342, Denver, CO 80210 — Main



GROSS INTERNAL AREA
Below Ground: 83 sq. ft, FLOOR 2: 804 sq. ft, FLOOR 3: 567 sq. ft
EXCLUDED AREAS: STORAGE: 48 sq. ft, UNDEFINED: 39 sq. ft, UNFINISHED BASEMENT: 322 sq. ft,
PORCH: 74 sq. ft, DECK: 98 sq. ft, FIREPLACE: 7 sq. ft,
OPEN TO BELOW: 207 sq. ft
TOTAL: 1454 sq. ft
MEASUREMENTS CALCULATED BY V1Photos.com ARE DEEMED HIGHLY RELIABLE BUT NOT GUARANTEED.



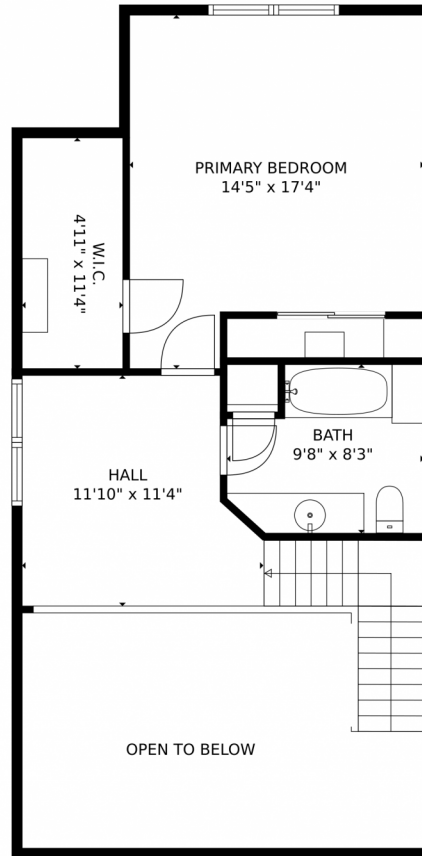
Disclaimer: Sizes and Dimensions are Approximate, Actual May Vary.



Taylor Haas
303-665-7368
taylorh@coloradorpm.com
<https://www.coloradorpm.com/available-rental-properties-denver>



1342 South York St - #1342, Denver, CO 80210 — 2nd Level



GROSS INTERNAL AREA
Below Ground: 83 sq. ft, FLOOR 2: 804 sq. ft, FLOOR 3: 567 sq. ft
EXCLUDED AREAS: STORAGE: 48 sq. ft, UNDEFINED: 39 sq. ft, UNFINISHED BASEMENT: 322 sq. ft,
PORCH: 74 sq. ft, DECK: 98 sq. ft, FIREPLACE: 7 sq. ft,
OPEN TO BELOW: 207 sq. ft
TOTAL: 1454 sq. ft
MEASUREMENTS CALCULATED BY V1Photos.com ARE DEEMED HIGHLY RELIABLE BUT NOT GUARANTEED.



Disclaimer: Sizes and Dimensions are Approximate, Actual May Vary.



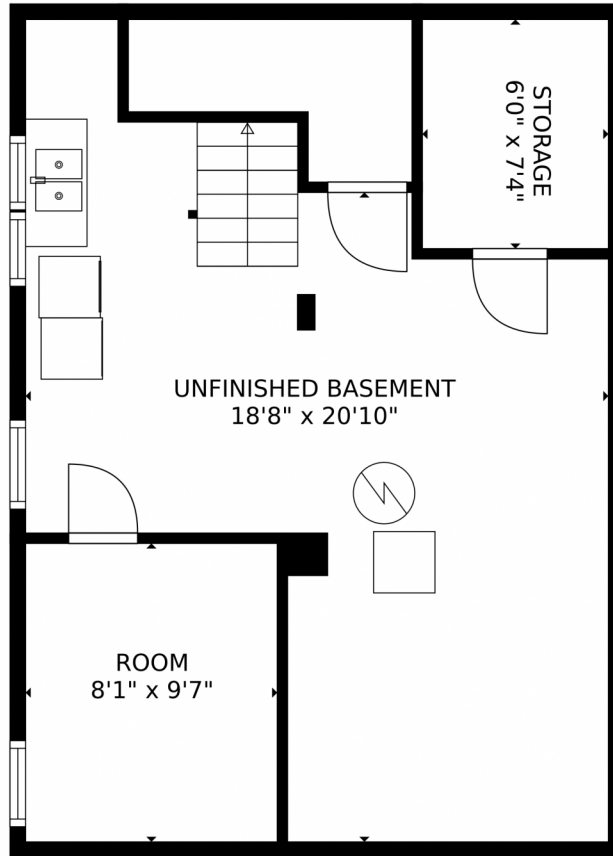
Taylor Haas
303-665-7368
taylorh@coloradorpm.com
<https://www.coloradorpm.com/available-rental-properties-denv>



Scan code
for more
property
details



1342 South York St - #1342, Denver, CO 80210 — Basement



GROSS INTERNAL AREA
Below Ground: 83 sq. ft, FLOOR 2: 804 sq. ft, FLOOR 3: 567 sq. ft
EXCLUDED AREAS: STORAGE: 48 sq. ft, UNDEFINED: 39 sq. ft, UNFINISHED BASEMENT: 322 sq. ft,
PORCH: 74 sq. ft, DECK: 98 sq. ft, FIREPLACE: 7 sq. ft,
OPEN TO BELOW: 207 sq. ft
TOTAL: 1454 sq. ft
MEASUREMENTS CALCULATED BY V1Photos.com ARE DEEMED HIGHLY RELIABLE BUT NOT GUARANTEED.

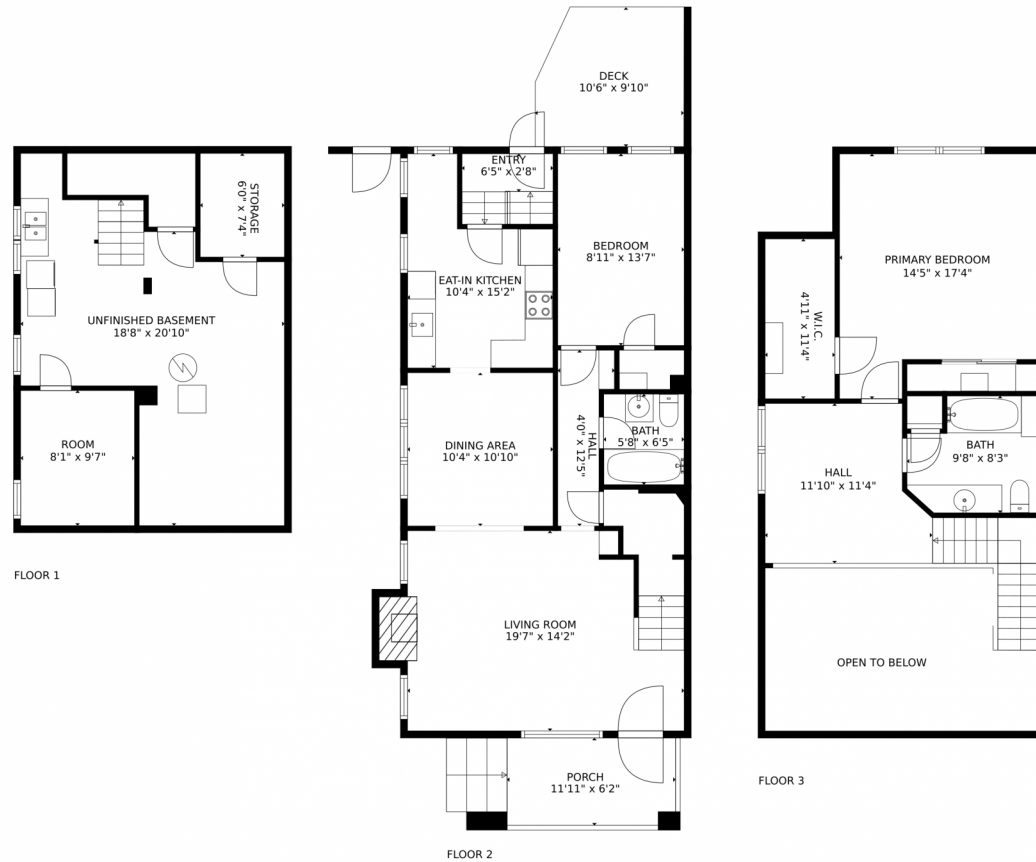
Disclaimer: Sizes and Dimensions are Approximate, Actual May Vary.



Taylor Haas
303-665-7368
taylorh@coloradorpm.com
<https://www.coloradorpm.com/available-rental-properties-denver>



1342 South York St - #1342, Denver, CO 80210 — All Levels



GROSS INTERNAL AREA
Below Ground: 83 sq. ft, FLOOR 2: 804 sq. ft, FLOOR 3: 567 sq. ft
EXCLUDED AREAS: STORAGE: 48 sq. ft, UNDEFINED: 39 sq. ft, UNFINISHED BASEMENT: 322 sq. ft,
PORCH: 74 sq. ft, DECK: 98 sq. ft, FIREPLACE: 7 sq. ft,
OPEN TO BELOW: 207 sq. ft
TOTAL: 1454 sq. ft
MEASUREMENTS CALCULATED BY V1Photos.com ARE DEEMED HIGHLY RELIABLE BUT NOT GUARANTEED.



Disclaimer: Sizes and Dimensions are Approximate, Actual May Vary.



Taylor Haas
303-665-7368
taylorh@coloradorpm.com
<https://www.coloradorpm.com/available-rental-properties-denv>



Scan code
for more
property
details

