



6021 South Zante Circle, Aurora, CO 80015 - 1st Floor



 Single Family  3,472 SQFT

PROPERTY DETAILS

Welcome to this beautiful single-family home located at 6021 South Zante Circle in Aurora, CO. With a spacious living area of 3,472 sqft, this property offers plenty of room for you and your family to spread out and enjoy.

As you approach the front of the house, you'll be greeted by a well-maintained front lawn and a garage, providing convenient parking for your vehicles. Step inside and you'll find a variety of features and amenities that will make your daily life comfortable and enjoyable.

The kitchen is a chef's dream, with stainless steel appliances, a kitchen island, and ample counter space for meal preparation. The light hardwood flooring throughout the house adds a touch of elegance, while the high ceilings create an open and airy atmosphere.

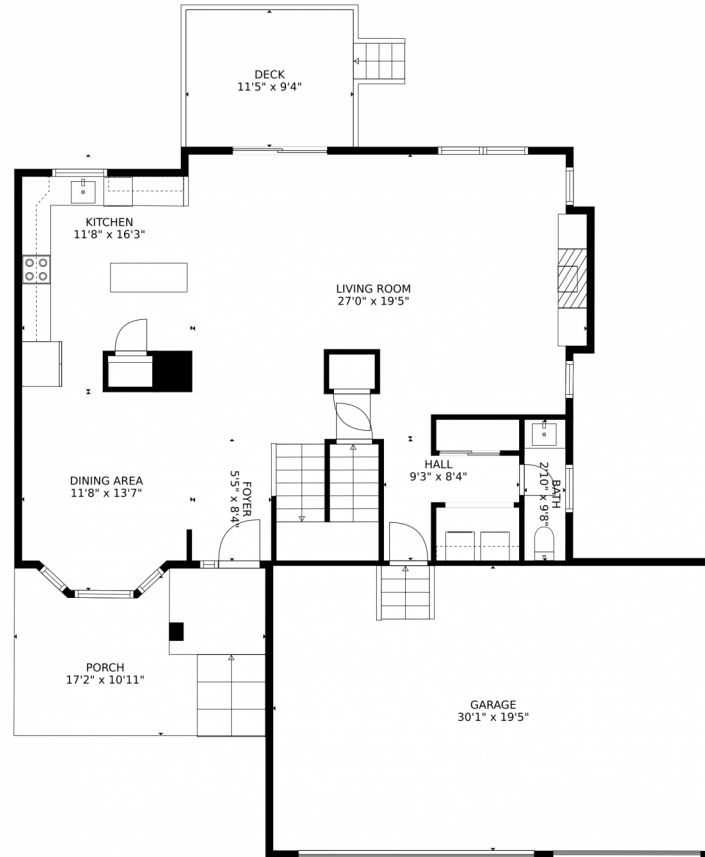
The property also boasts a spacious backyard with a patio, balcony, and deck, perfect for outdoor entertaining or simply relaxing and enjoying the beautiful Colorado weather. Located in a desirable community, this property is close to schools, parks, and shopping centers, providing convenient access to everything you need.



Haley Hart
720-938-1722
haley@newkeyr.com



6021 South Zante Circle, Aurora, CO 80015 – 1st Floor



GROSS INTERNAL AREA
Below Ground: 934 sq. ft, FLOOR 2: 1042 sq. ft, FLOOR 3: 1281 sq. ft
EXCLUDED AREAS: GARAGE: 586 sq. ft, PORCH: 183 sq. ft, DECK: 107 sq. ft.
OPEN TO BELOW: 43 sq. ft
TOTAL: 3257 sq. ft
MEASUREMENTS CALCULATED BY V1Photos.com ARE DEEMED HIGHLY RELIABLE BUT NOT GUARANTEED.



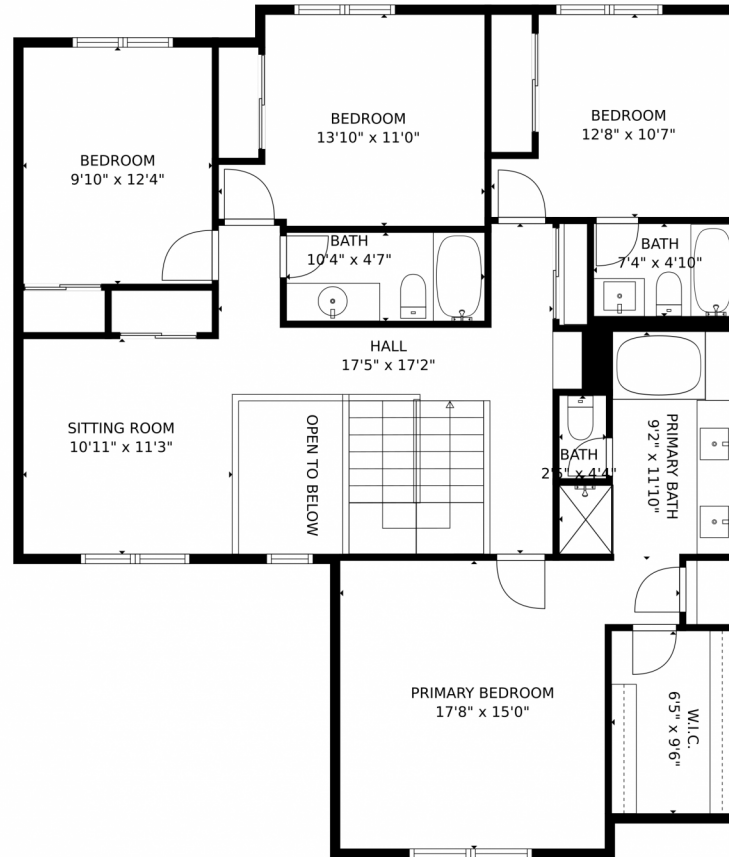
Disclaimer: Sizes and Dimensions are Approximate, Actual May Vary.



Haley Hart
720-938-1722
haley@newkeyr.com



6021 South Zante Circle, Aurora, CO 80015 – 2nd Floor



GROSS INTERNAL AREA
Below Ground: 934 sq. ft, FLOOR 2: 1042 sq. ft, FLOOR 3: 1281 sq. ft
EXCLUDED AREAS: GARAGE: 586 sq. ft, PORCH: 183 sq. ft, DECK: 107 sq. ft.
OPEN TO BELOW: 43 sq. ft
TOTAL: 3257 sq. ft
MEASUREMENTS CALCULATED BY V1Photos.COM ARE DEEMED HIGHLY RELIABLE BUT NOT GUARANTEED.



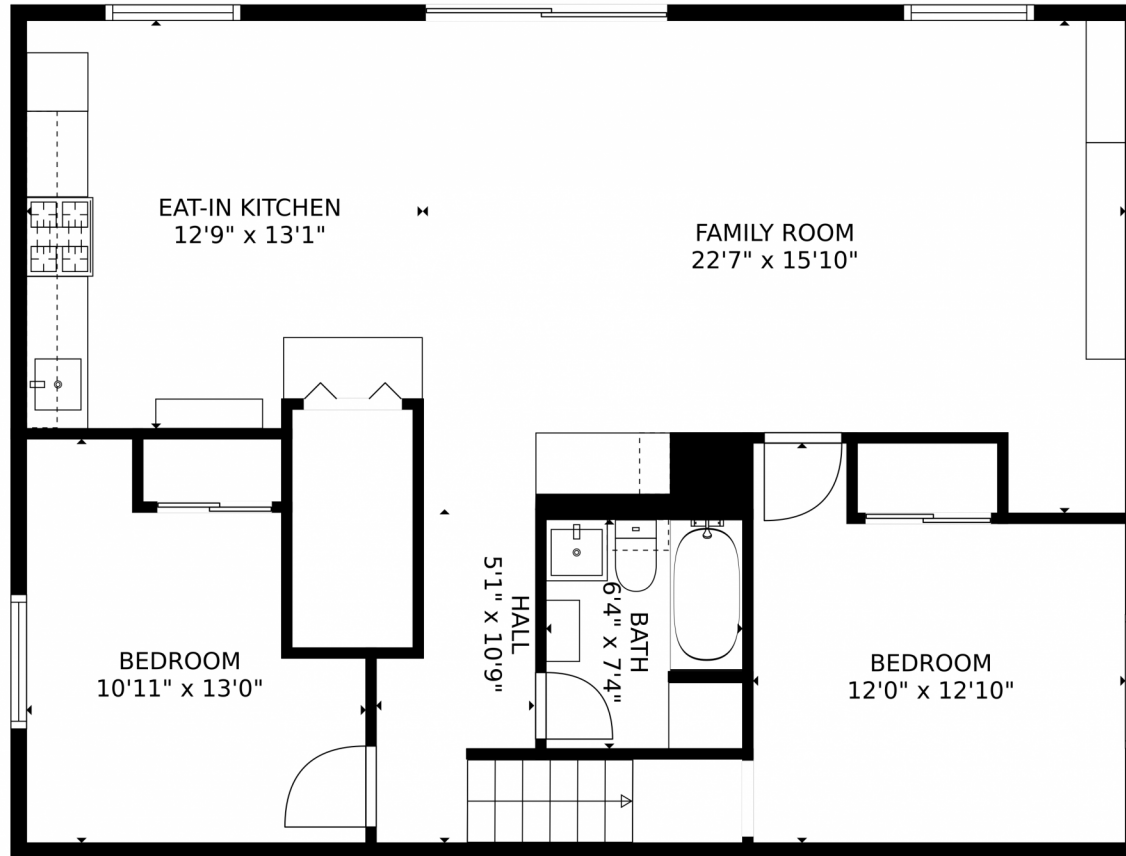
Disclaimer: Sizes and Dimensions are Approximate, Actual May Vary.



Haley Hart
720-938-1722
haley@newkeyr.com



6021 South Zante Circle, Aurora, CO 80015 – Basement



GROSS INTERNAL AREA
Below Ground: 934 sq. ft, FLOOR 2: 1042 sq. ft, FLOOR 3: 1281 sq. ft
EXCLUDED AREAS: GARAGE: 586 sq. ft, PORCH: 183 sq. ft, DECK: 107 sq. ft.
OPEN TO BELOW: 43 sq. ft
TOTAL: 3257 sq. ft
MEASUREMENTS CALCULATED BY V1Photos.COM ARE DEEMED HIGHLY RELIABLE BUT NOT GUARANTEED.



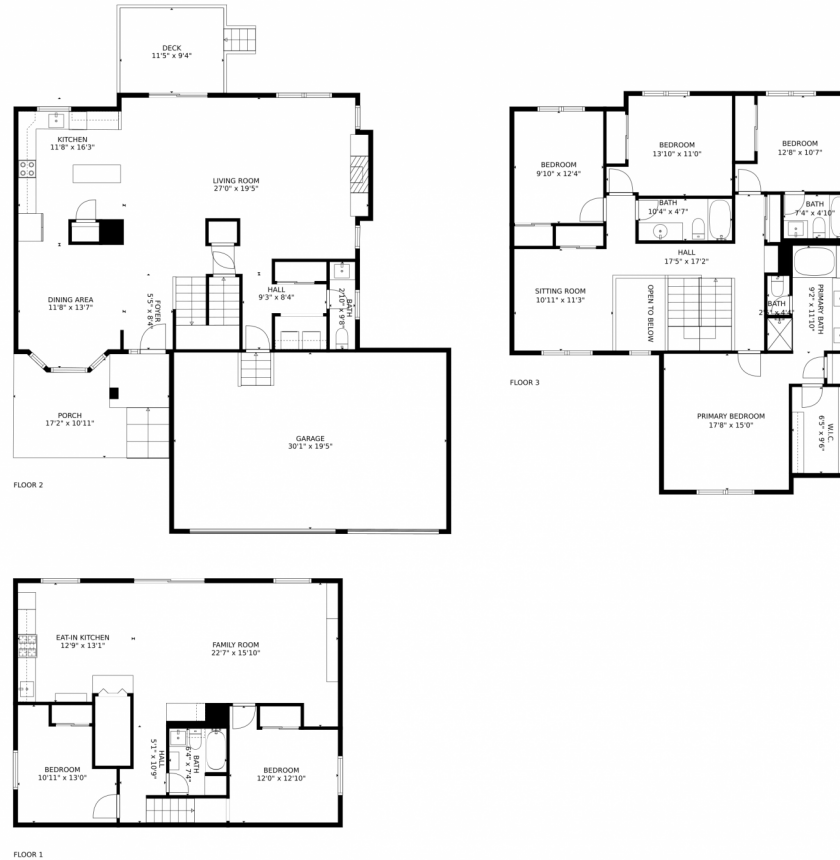
Disclaimer: Sizes and Dimensions are Approximate, Actual May Vary.



Haley Hart
720-938-1722
haley@newkeyr.com



6021 South Zante Circle, Aurora, CO 80015 – All Floors



GROSS INTERNAL AREA
Below Ground: 934 sq. ft, FLOOR 2: 1042 sq. ft, FLOOR 3: 1281 sq. ft
EXCLUDED AREAS: GARAGE: 586 sq. ft, PORCH: 183 sq. ft, DECK: 107 sq. ft
OPEN TO BELOW: 43 sq. ft
TOTAL: 3257 sq. ft
MEASUREMENTS CALCULATED BY V1Photos.com ARE DEEMED HIGHLY RELIABLE BUT NOT GUARANTEED.



Disclaimer: Sizes and Dimensions are Approximate, Actual May Vary.



Haley Hart
720-938-1722
haley@newkeyr.com



Scan code
for more
property
details

