



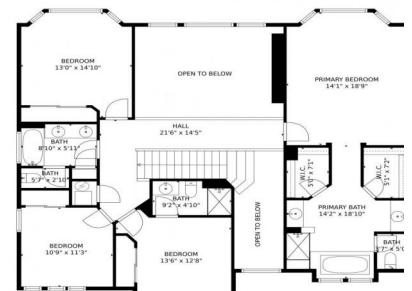
3507 Running Deer Drive
 Castle Rock, CO 80109
 COMMUNITY: The Meadows/Soaring Eagle Estates

MLS # 8790010

PRICE
 \$1,175,000



3507 Running Deer Drive, Castle Rock, CO 80109 - Second Level



- Single Family
- 4532 SQFT
- 5 Beds
- 4/1 Baths
- 3 Car
- 0.39 Acre

PROPERTY DETAILS

Step into the epitome of comfort, space, and luxury with this Beautiful 5 bedroom, 5 bath house in prestigious Soaring Eagle Estates in The Meadows, perfectly situated on an expansive lot that offers breathtaking panoramic views. As you enter the home, you are greeted by an open and inviting floor plan that flawlessly incorporates a foyer, a well-appointed living room, and a formal dining area. Each of the five bedrooms exudes its own distinct charm and several offer an en-suite bathroom, providing privacy and a personalized touch. The kitchen effortlessly flows into a spacious great room with vaulted ceilings, creating a welcoming environment for gatherings and relaxation. One of the true gems of this home is the finished walk-out basement. It offers ample space with a entertainment area including surround sound, a wet bar with two mounted TV's plus a bar refrigerator. Additional area can be used for a home gym, game area, or a cozy retreat, the possibilities are endless. Outside, you'll be captivated by the generous lot size that creates a sense of seclusion and tranquility. Whether you're hosting a summer barbecue, cultivating a home garden, or simply enjoying a morning cup of coffee, the sprawling backyard is your personal oasis with additional room for play structure next to the in ground trampoline. Most importantly, the stunning views this property offers are truly second to none. From morning's first light to the setting sun, the captivating scenery is the perfect



Jeni VanOrnum
 303-790-7200
 jenivorealtor@gmail.com
 https://www.jenivosellscolorado.com

Scan code for more property details



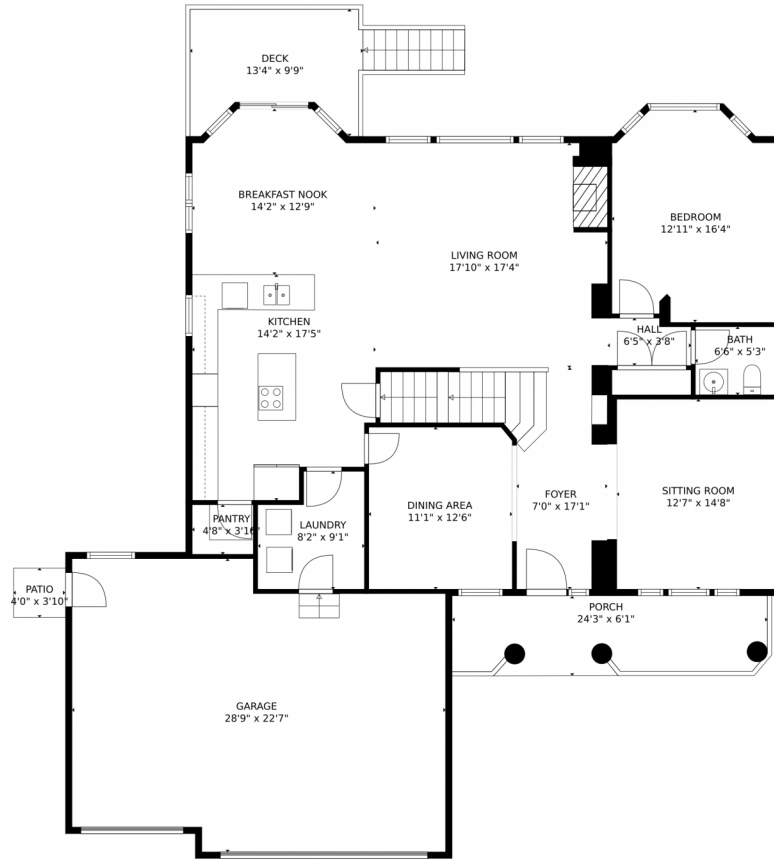
backdrop for your daily life. Tons of upgrades throughout! New water heater, newer AC, 2 furnaces, 2 AC units, 2 Water Heaters, updated primary bath, new main floor flooring and more. Soaring Eagle Estates is THE neighborhood to be in -- large lots, wide streets, mature landscaping & proximity to trails, parks and schools make it a highly desired place to live! This home isn't simply a place to live, it's a statement of lifestyle. Don't miss this opportunity to own a piece of paradise in a prime location. Douglas County School District. Easy access to I-25. The Meadows is home to the regional hospital, movie theatre, restaurants & shopping!



Jeni VanOrnum
303-790-7200
jenivorealtor@gmail.com
<https://www.jenivosellscolorado.com>



3507 Running Deer Drive, Castle Rock, CO 80109 – Main Level



GROSS INTERNAL AREA
Below Ground: 1211 sq. ft, FLOOR 2: 1583 sq. ft, FLOOR 3: 1369 sq. ft
EXCLUDED AREAS: ELECTRICAL ROOM: 222 sq. ft, PATIO: 639 sq. ft, GARAGE: 590 sq. ft,
PORCH: 143 sq. ft, DECK: 129 sq. ft, OPEN TO BELOW: 308 sq. ft
TOTAL: 4163 sq. ft
MEASUREMENTS CALCULATED BY V1Photos.com ARE DEEMED HIGHLY RELIABLE BUT NOT GUARANTEED.



Disclaimer: Sizes and Dimensions are Approximate, Actual May Vary.



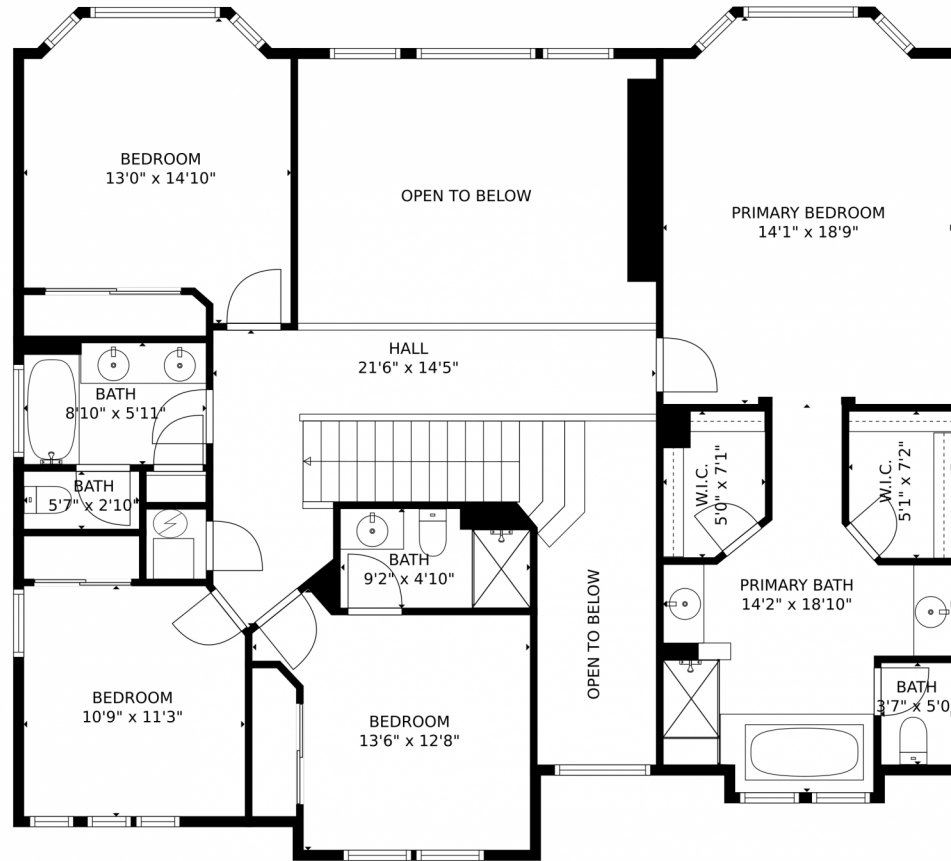
Jeni VanOrnum
303-790-7200
jenivorealtor@gmail.com
<https://www.jenivosellscolorado.com>



Scan code
for more
property
details



3507 Running Deer Drive, Castle Rock, CO 80109 – Second Level



GROSS INTERNAL AREA
Below Ground: 1211 sq. ft, FLOOR 2: 1583 sq. ft, FLOOR 3: 1369 sq. ft
EXCLUDED AREAS: ELECTRICAL ROOM: 222 sq. ft, PATIO: 639 sq. ft, GARAGE: 590 sq. ft,
PORCH: 143 sq. ft, DECK: 129 sq. ft, OPEN TO BELOW: 308 sq. ft
TOTAL: 4163 sq. ft
MEASUREMENTS CALCULATED BY V1Photos.com ARE DEEMED HIGHLY RELIABLE BUT NOT GUARANTEED.



Disclaimer: Sizes and Dimensions are Approximate, Actual May Vary.

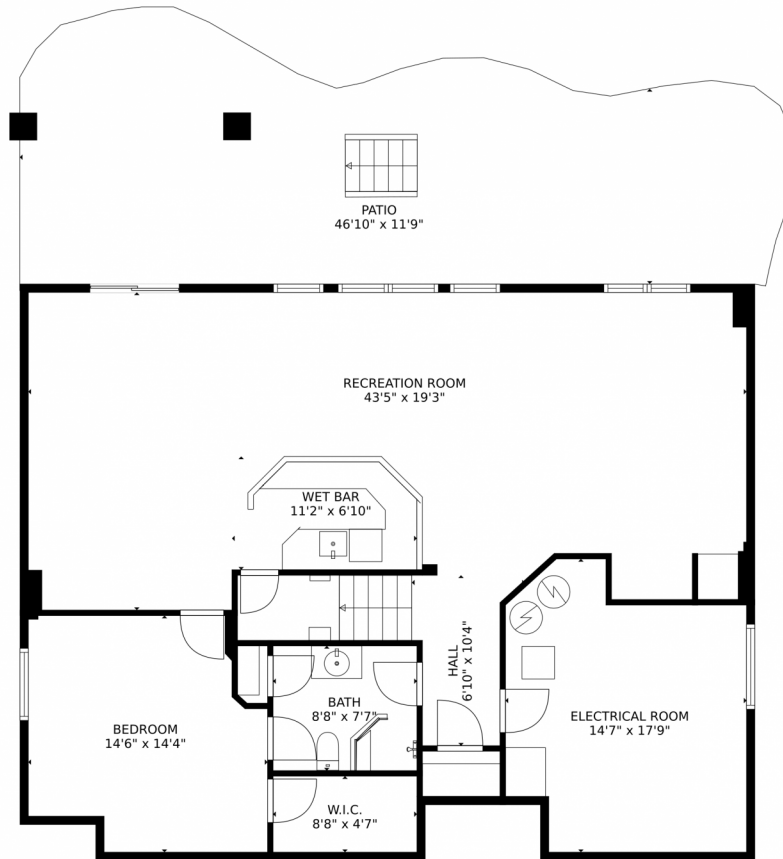


Jeni VanOrnum
303-790-7200
jenivorealtor@gmail.com
<https://www.jenivosellscolorado.com>



Scan code
for more
property
details

3507 Running Deer Drive, Castle Rock, CO 80109 – Lower Level



GROSS INTERNAL AREA
Below Ground: 1211 sq. ft, FLOOR 2: 1583 sq. ft, FLOOR 3: 1369 sq. ft
EXCLUDED AREAS: ELECTRICAL ROOM: 222 sq. ft, PATIO: 639 sq. ft, GARAGE: 590 sq. ft,
PORCH: 143 sq. ft, DECK: 129 sq. ft, OPEN TO BELOW: 308 sq. ft
TOTAL: 4163 sq. ft
MEASUREMENTS CALCULATED BY V1Photos.com ARE DEEMED HIGHLY RELIABLE BUT NOT GUARANTEED.



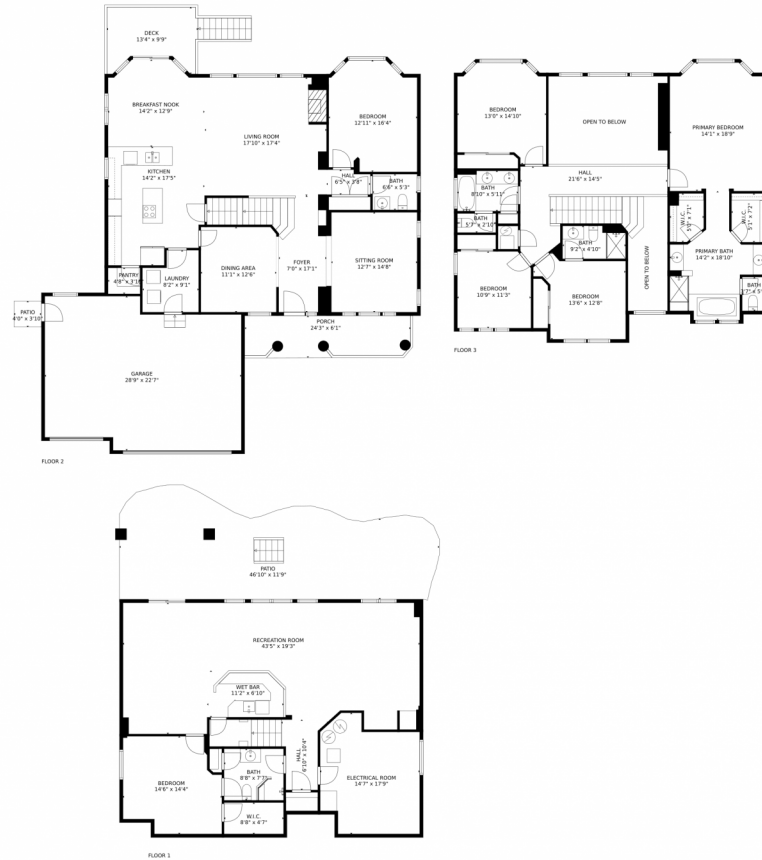
Disclaimer: Sizes and Dimensions are Approximate, Actual May Vary.



Jeni VanOrnum
303-790-7200
jenivorealtor@gmail.com
<https://www.jenivosellscolorado.com>



3507 Running Deer Drive, Castle Rock, CO 80109 – All Levels



GROSS INTERNAL AREA
 Below Ground: 1211 sq. ft, FLOOR 2: 1583 sq. ft, FLOOR 3: 1369 sq. ft
 EXCLUDED AREAS: ELECTRICAL ROOM: 222 sq. ft, PATIO: 639 sq. ft, GARAGE: 590 sq. ft,
 PORCH: 143 sq. ft, DECK: 129 sq. ft, OPEN TO BELOW: 308 sq. ft
 TOTAL: 4163 sq. ft
 MEASUREMENTS CALCULATED BY V1Photos.com ARE DEEMED HIGHLY RELIABLE BUT NOT GUARANTEED.



Disclaimer: Sizes and Dimensions are Approximate, Actual May Vary.



Jeni VanOrnum
 303-790-7200
 jenivorealtor@gmail.com
<https://www.jenivosellscolorado.com>



Scan code
 for more
 property
 details

