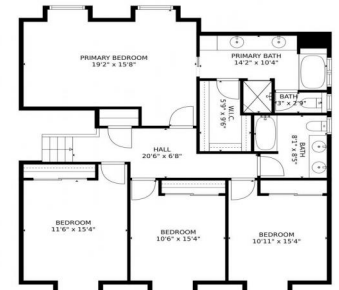
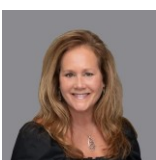




5424 South Hoyt Street, Littleton, CO 80123 - 3rd Level



 Single Family  3924 SQFT

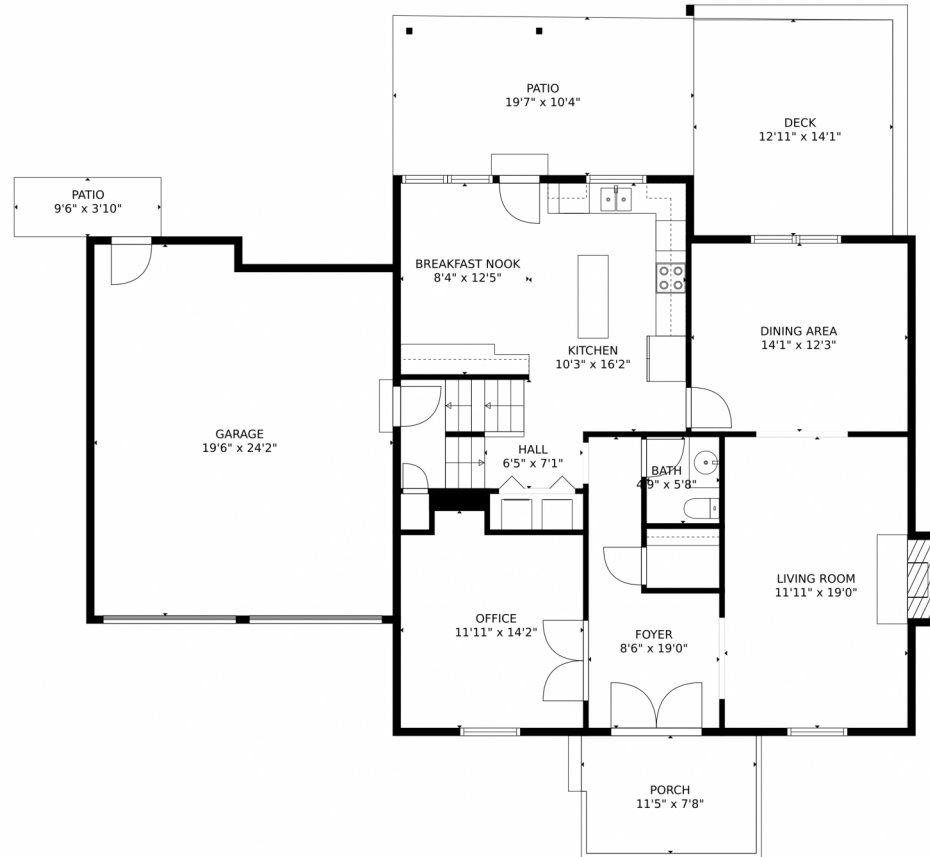


Ann Nevenschwander
720-351-1560
annhomes@msn.com

Scan code for more property details 



5424 South Hoyt Street, Littleton, CO 80123 – Main Level



GROSS INTERNAL AREA
Below Ground: 728 sq. ft, FLOOR 2: 1119 sq. ft, FLOOR 3: 553 sq. ft, FLOOR 4: 1144 sq. ft
EXCLUDED AREAS: ELECTRICAL ROOM: 68 sq. ft, STORAGE: 292 sq. ft, GARAGE: 452 sq. ft,
DECK: 183 sq. ft, PATIO: 239 sq. ft, PORCH: 86 sq. ft,
FIREPLACE: 8 sq. ft
TOTAL: 3544 sq. ft
MEASUREMENTS CALCULATED BY V1Photos.COM ARE DEEMED HIGHLY RELIABLE BUT NOT GUARANTEED.

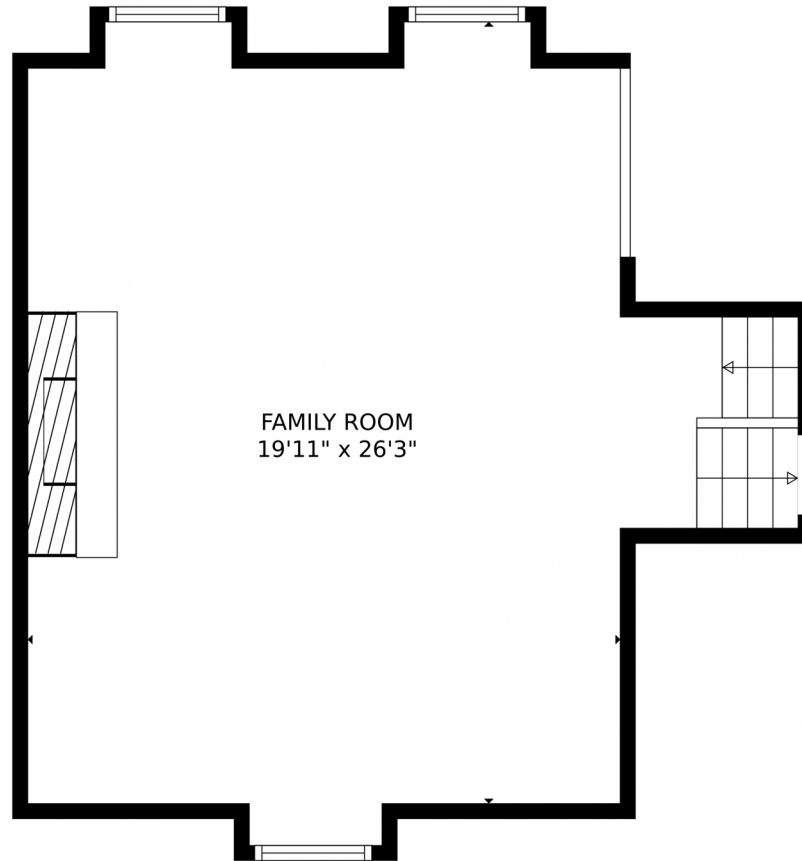


Disclaimer: Sizes and Dimensions are Approximate, Actual May Vary.



Ann Nevenschwander
720-351-1560
annhomes@msn.com





GROSS INTERNAL AREA
Below Ground: 728 sq. ft, FLOOR 2: 1119 sq. ft, FLOOR 3: 553 sq. ft, FLOOR 4: 1144 sq. ft
EXCLUDED AREAS: ELECTRICAL ROOM: 68 sq. ft, STORAGE: 292 sq. ft, GARAGE: 452 sq. ft,
DECK: 183 sq. ft, PATIO: 239 sq. ft, PORCH: 86 sq. ft,
FIREPLACE: 8 sq. ft
TOTAL: 3544 sq. ft
MEASUREMENTS CALCULATED BY V1Photos.com ARE DEEMED HIGHLY RELIABLE BUT NOT GUARANTEED.

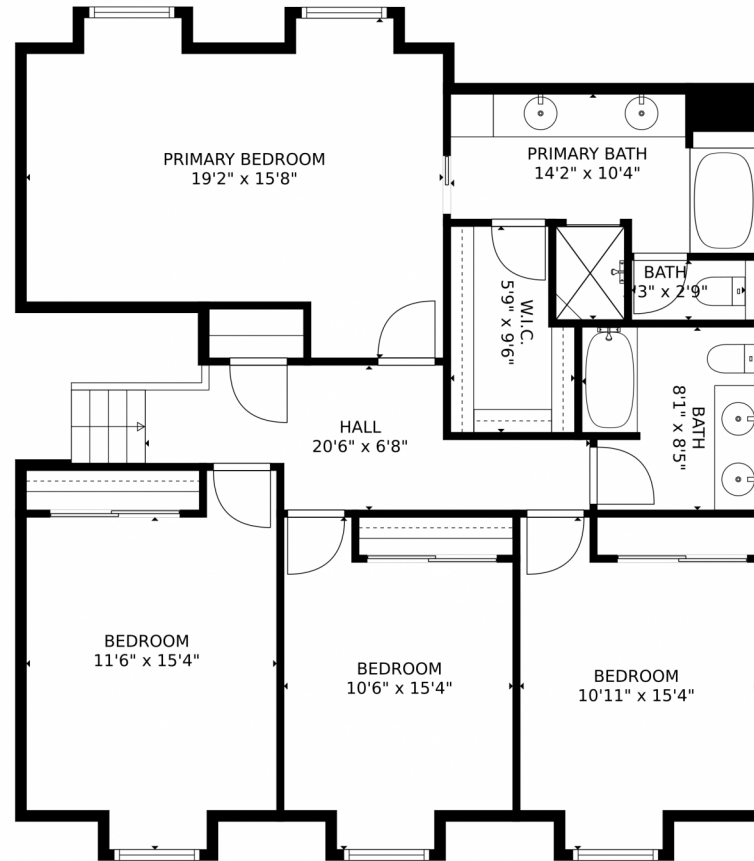


Disclaimer: Sizes and Dimensions are Approximate, Actual May Vary.



Ann Nevenschwander
720-351-1560
annhomes@msn.com





GROSS INTERNAL AREA
Below Ground: 728 sq. ft, FLOOR 2: 1119 sq. ft, FLOOR 3: 553 sq. ft, FLOOR 4: 1144 sq. ft
EXCLUDED AREAS: ELECTRICAL ROOM: 68 sq. ft, STORAGE: 292 sq. ft, GARAGE: 452 sq. ft,
DECK: 183 sq. ft, PATIO: 239 sq. ft, PORCH: 86 sq. ft,
FIREPLACE: 8 sq. ft
TOTAL: 3544 sq. ft
MEASUREMENTS CALCULATED BY V1Photos.COM ARE DEEMED HIGHLY RELIABLE BUT NOT GUARANTEED.



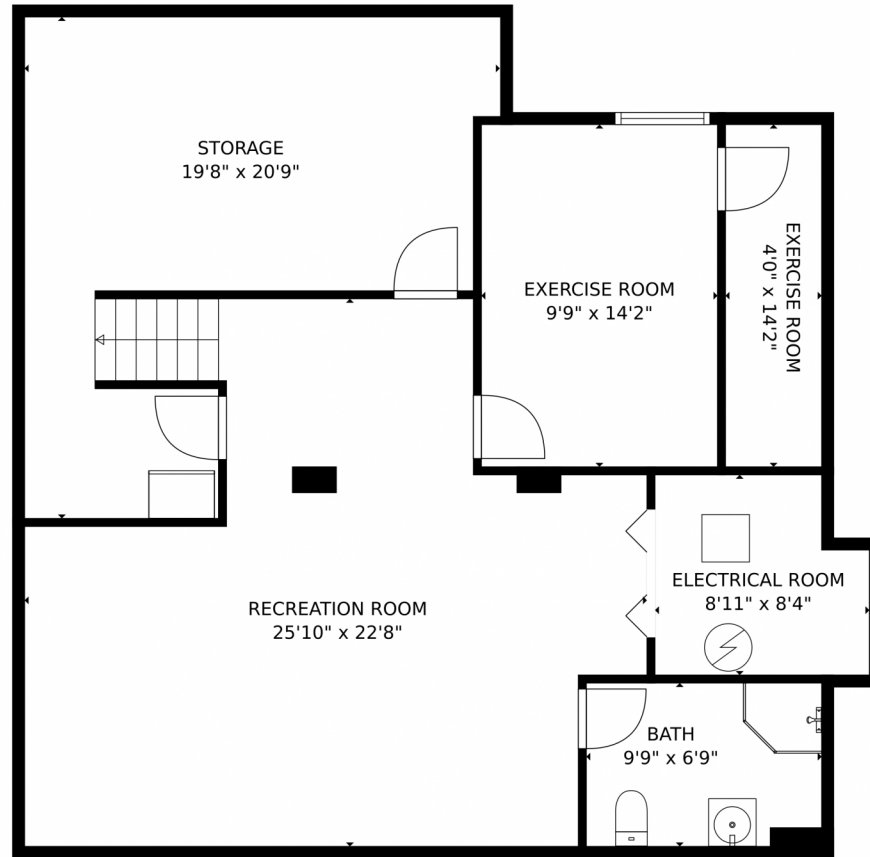
Disclaimer: Sizes and Dimensions are Approximate, Actual May Vary.



Ann Nevenschwander
720-351-1560
annhomes@msn.com



5424 South Hoyt Street, Littleton, CO 80123 – Lower Level



GROSS INTERNAL AREA
Below Ground: 728 sq. ft, FLOOR 2: 1119 sq. ft, FLOOR 3: 553 sq. ft, FLOOR 4: 1144 sq. ft
EXCLUDED AREAS: ELECTRICAL ROOM: 68 sq. ft, STORAGE: 292 sq. ft, GARAGE: 452 sq. ft,
DECK: 183 sq. ft, PATIO: 239 sq. ft, PORCH: 86 sq. ft,
FIREPLACE: 8 sq. ft
TOTAL: 3544 sq. ft
MEASUREMENTS CALCULATED BY V1Photos.COM ARE DEEMED HIGHLY RELIABLE BUT NOT GUARANTEED.



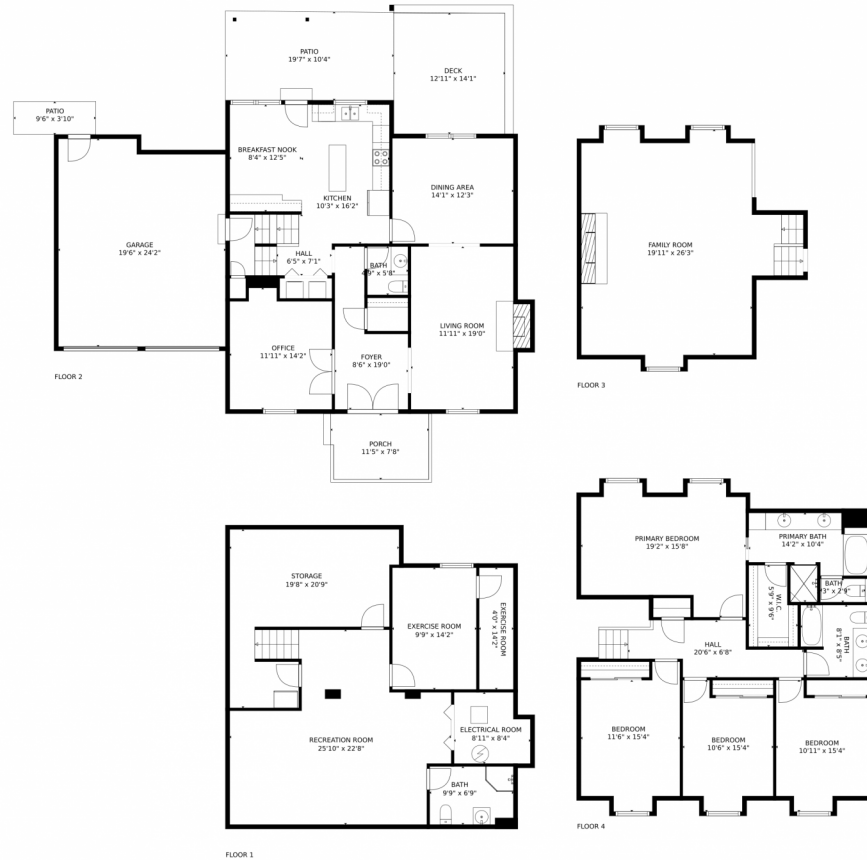
Disclaimer: Sizes and Dimensions are Approximate, Actual May Vary.



Ann Nevenschwander
720-351-1560
annhomes@msn.com



5424 South Hoyt Street, Littleton, CO 80123 – All Levels



GROSS INTERNAL AREA
 Below Ground: 728 sq. ft, FLOOR 2: 1119 sq. ft, FLOOR 3: 553 sq. ft, FLOOR 4: 1144 sq. ft
 EXCLUDED AREAS: ELECTRICAL ROOM: 68 sq. ft, STORAGE: 292 sq. ft, GARAGE: 452 sq. ft,
 DECK: 183 sq. ft, PATIO: 239 sq. ft, PORCH: 86 sq. ft,
 FIREPLACE: 8 sq. ft
 TOTAL: 3544 sq. ft
 MEASUREMENTS CALCULATED BY V1Photos.COM ARE DEEMED HIGHLY RELIABLE BUT NOT GUARANTEED.



Disclaimer: Sizes and Dimensions are Approximate, Actual May Vary.



Ann Nevenschwander
 720-351-1560
 annhomes@msn.com

