



Single Family



2624 SQFT



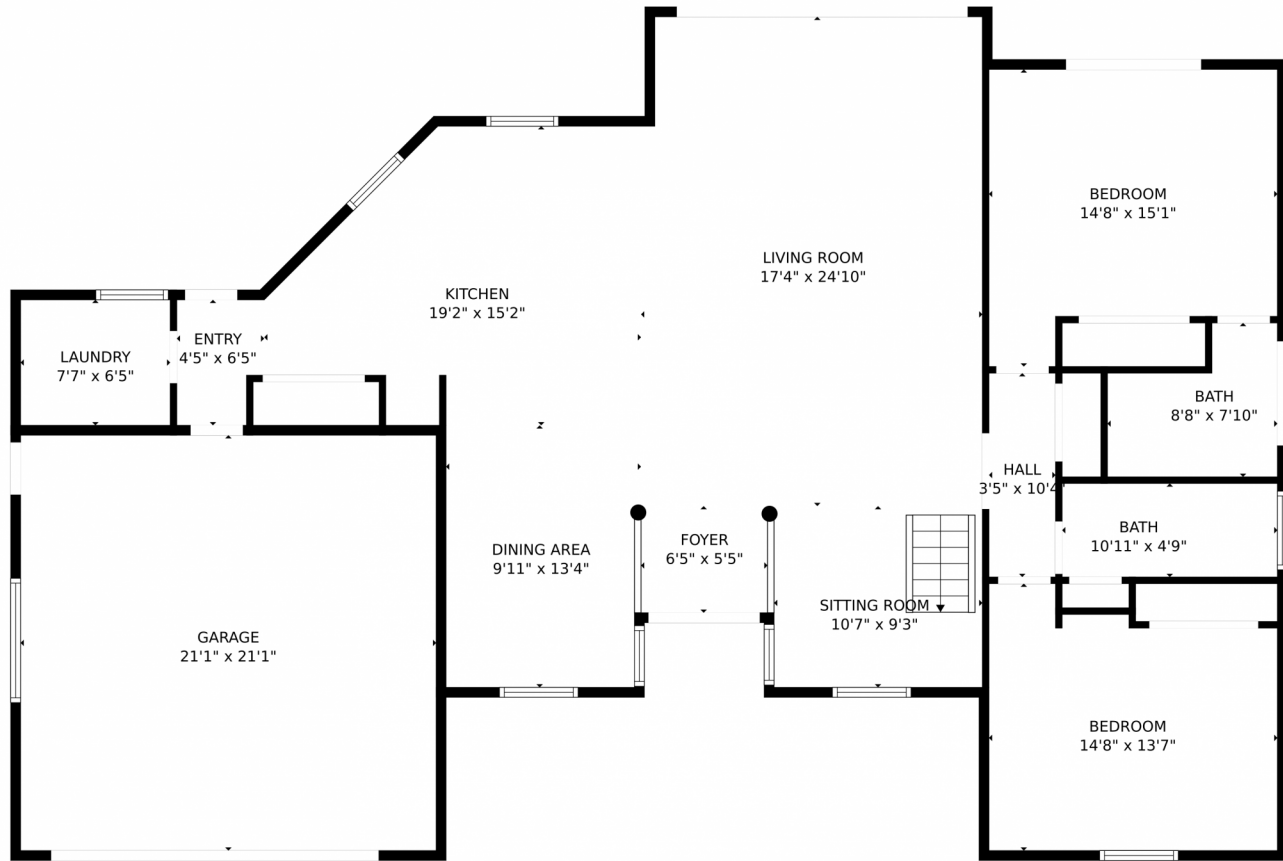
Nick Quay P.A.
786-797-3162
nick@nickquay.com



Scan code
for more
property
details



2865 Northeast 19th Street, Pompano Beach, FL 33062 – 1st Floor



GROSS INTERNAL AREA
FLOOR 1: 1616 sq. ft, FLOOR 2: 806 sq. ft
EXCLUDED AREAS: GARAGE: 446 sq. ft
TOTAL: 2422 sq. ft

MEASUREMENTS CALCULATED BY V1PHOTOS.COM ARE DEEMED HIGHLY RELIABLE BUT NOT GUARANTEED.



Disclaimer: Sizes and Dimensions are Approximate, Actual May Vary.



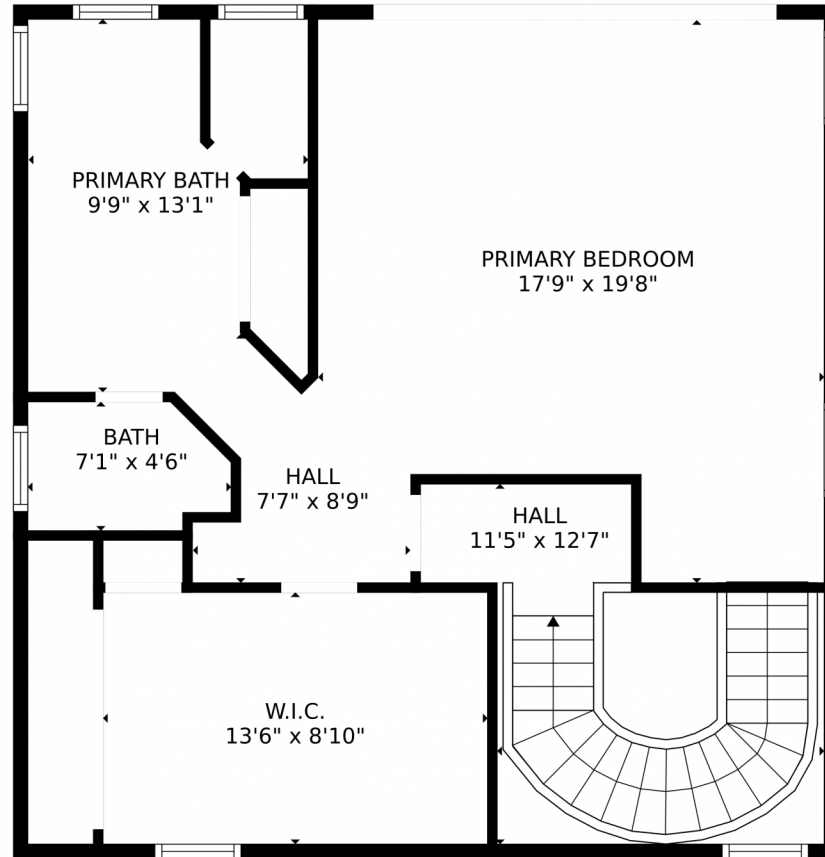
Nick Quay P.A.
786-797-3162
nick@nickquay.com



Scan code for more property details



2865 Northeast 19th Street, Pompano Beach, FL 33062 – 2nd Floor



GROSS INTERNAL AREA
FLOOR 1: 1616 sq. ft, FLOOR 2: 806 sq. ft
EXCLUDED AREAS: GARAGE: 446 sq. ft
TOTAL: 2422 sq. ft

MEASUREMENTS CALCULATED BY V1Photos.COM ARE DEEMED HIGHLY RELIABLE BUT NOT GUARANTEED.



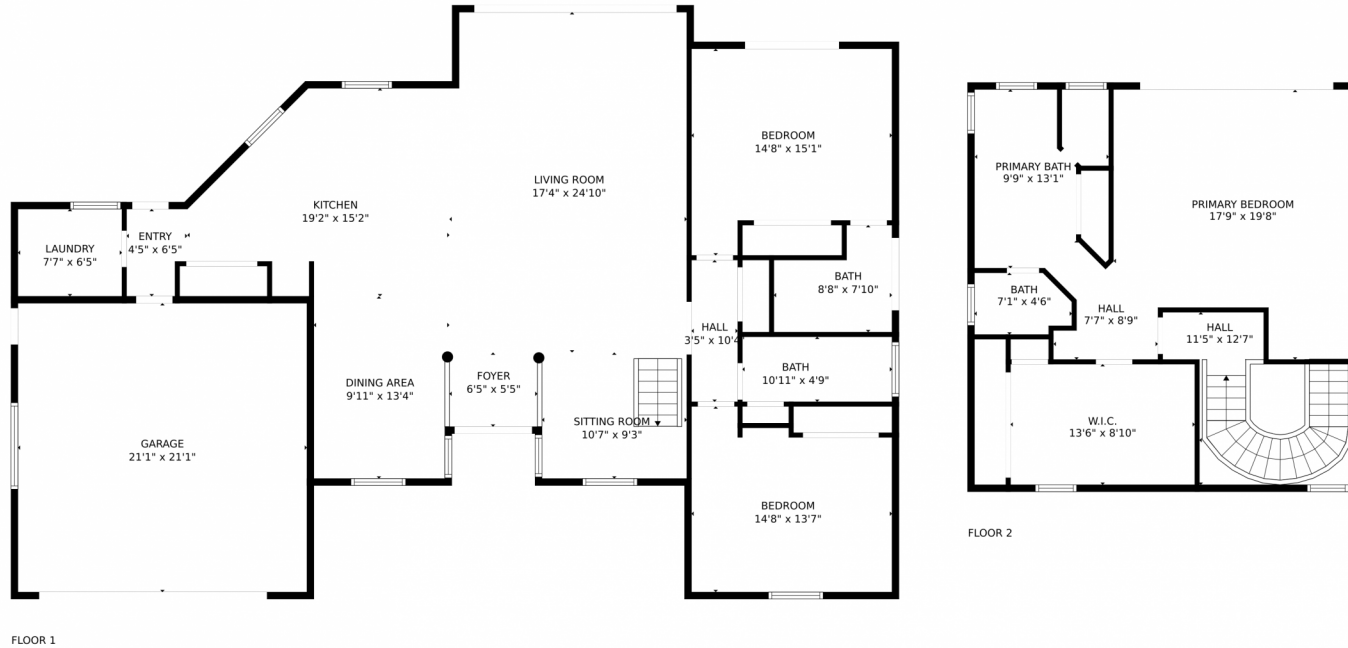
Disclaimer: Sizes and Dimensions are Approximate, Actual May Vary.



Nick Quay P.A.
786-797-3162
nick@nickquay.com



2865 Northeast 19th Street, Pompano Beach, FL 33062 – All floors



GROSS INTERNAL AREA
FLOOR 1: 1616 sq. ft, FLOOR 2: 806 sq. ft
EXCLUDED AREAS: GARAGE: 446 sq. ft
TOTAL: 2422 sq. ft

MEASUREMENTS CALCULATED BY V1Photos.com ARE DEEMED HIGHLY RELIABLE BUT NOT GUARANTEED.



Disclaimer: Sizes and Dimensions are Approximate, Actual May Vary.



Nick Quay P.A.
786-797-3162
nick@nickquay.com

