



1613 Lexington Rd  
Pueblo, CO 81001



 Single Family    2550 SQFT    5 Beds    2/1 Baths    1 Car

Ron Chmiel  
719-582-3478  
vision1@vision1properties.com





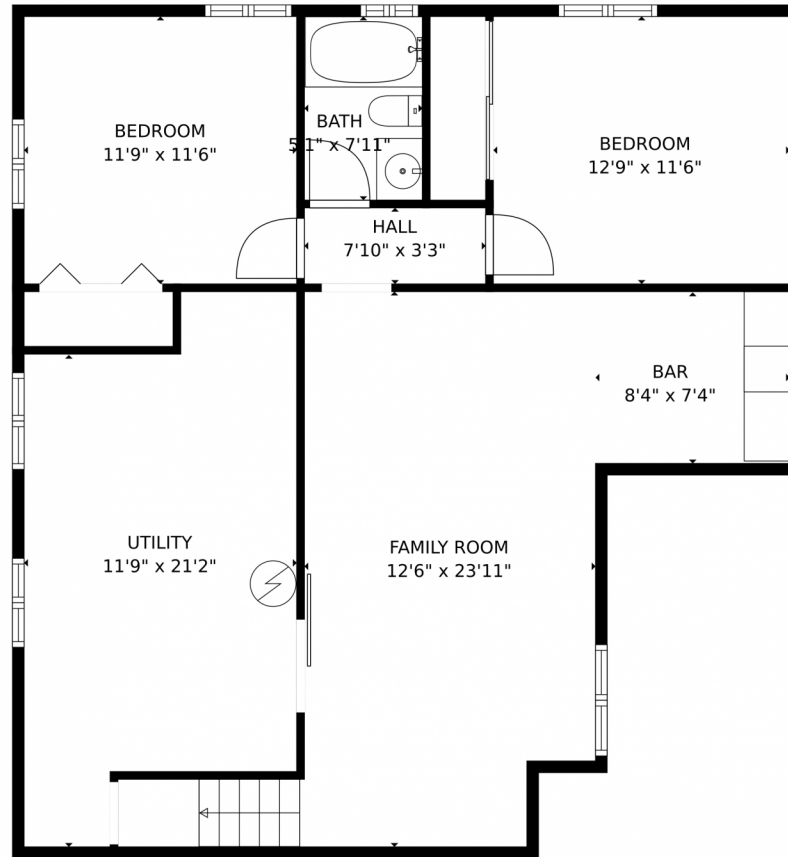
GROSS INTERNAL AREA  
Below Ground: 793 sq. ft, FLOOR 2: 1105 sq. ft  
EXCLUDED AREAS: UTILITY: 236 sq. ft, GARAGE: 284 sq. ft, PATIO: 1234 sq. ft  
TOTAL: 1898 sq. ft  
MEASUREMENTS CALCULATED BY V1Photos.com ARE DEEMED HIGHLY RELIABLE BUT NOT GUARANTEED.



Disclaimer: Sizes and Dimensions are Approximate, Actual May Vary.



# 1613 Lexington Rd, Pueblo, CO 81001 – Lower Level



GROSS INTERNAL AREA  
Below Ground: 793 sq. ft, FLOOR 2: 1105 sq. ft  
EXCLUDED AREAS: UTILITY: 236 sq. ft, GARAGE: 284 sq. ft, PATIO: 1234 sq. ft  
TOTAL: 1898 sq. ft  
MEASUREMENTS CALCULATED BY V1Photos.COM ARE DEEMED HIGHLY RELIABLE BUT NOT GUARANTEED.

Disclaimer: Sizes and Dimensions are Approximate, Actual May Vary.

Ron Chmiel  
719-582-3478  
vision1@vision1properties.com



# 1613 Lexington Rd, Pueblo, CO 81001 – All Levels



GROSS INTERNAL AREA  
Below Ground: 793 sq. ft, FLOOR 2: 1105 sq. ft  
EXCLUDED AREAS: UTILITY: 236 sq. ft, GARAGE: 284 sq. ft, PATIO: 1234 sq. ft  
TOTAL: 1898 sq. ft  
MEASUREMENTS CALCULATED BY V1Photos.COM ARE DEEMED HIGHLY RELIABLE BUT NOT GUARANTEED.



Disclaimer: Sizes and Dimensions are Approximate, Actual May Vary.

Ron Chmiel  
719-582-3478  
vision1@vision1properties.com

