




14185 Dorado Court  
Broomfield, CO 80023

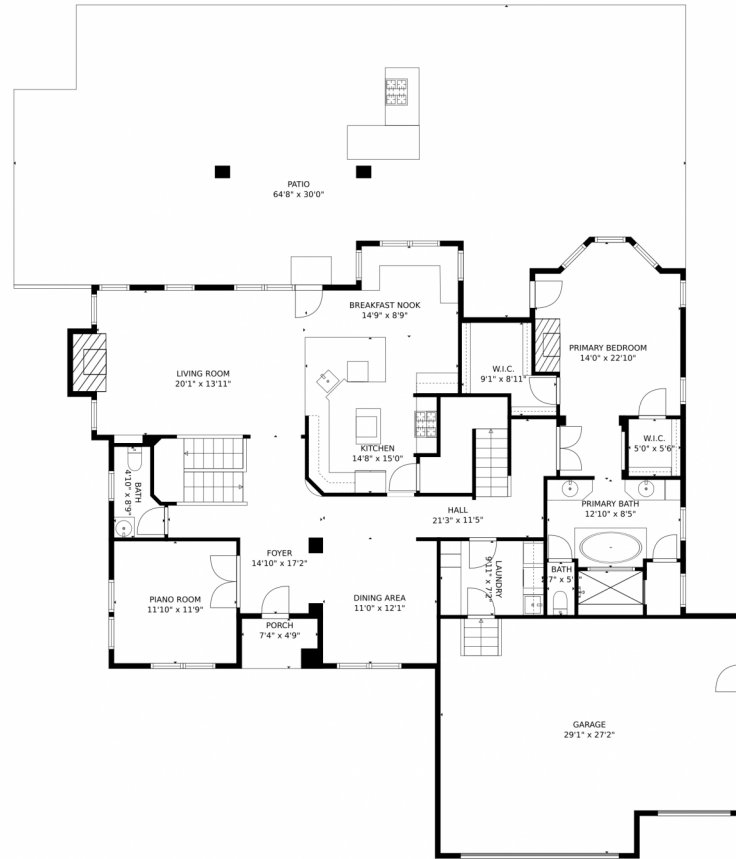


 Single Family  5227 SQFT

 **Paul Deakin**  
303-587-0043  
deakinrealestate@msn.com



# 14185 Dorado Court, Broomfield, CO 80023 – Main Level



GROSS INTERNAL AREA  
Below Ground: 1137 sq. ft, FLOOR 2: 1848 sq. ft, FLOOR 3: 677 sq. ft  
EXCLUDED AREAS: ELECTRICAL ROOM: 47 sq. ft, STORAGE: 663 sq. ft, GARAGE: 659 sq. ft,  
PORCH: 35 sq. ft, PATIO: 1624 sq. ft, FIREPLACE: 10 sq. ft  
TOTAL: 3662 sq. ft  
MEASUREMENTS CALCULATED BY V1Photos.com ARE DEEMED HIGHLY RELIABLE BUT NOT GUARANTEED.



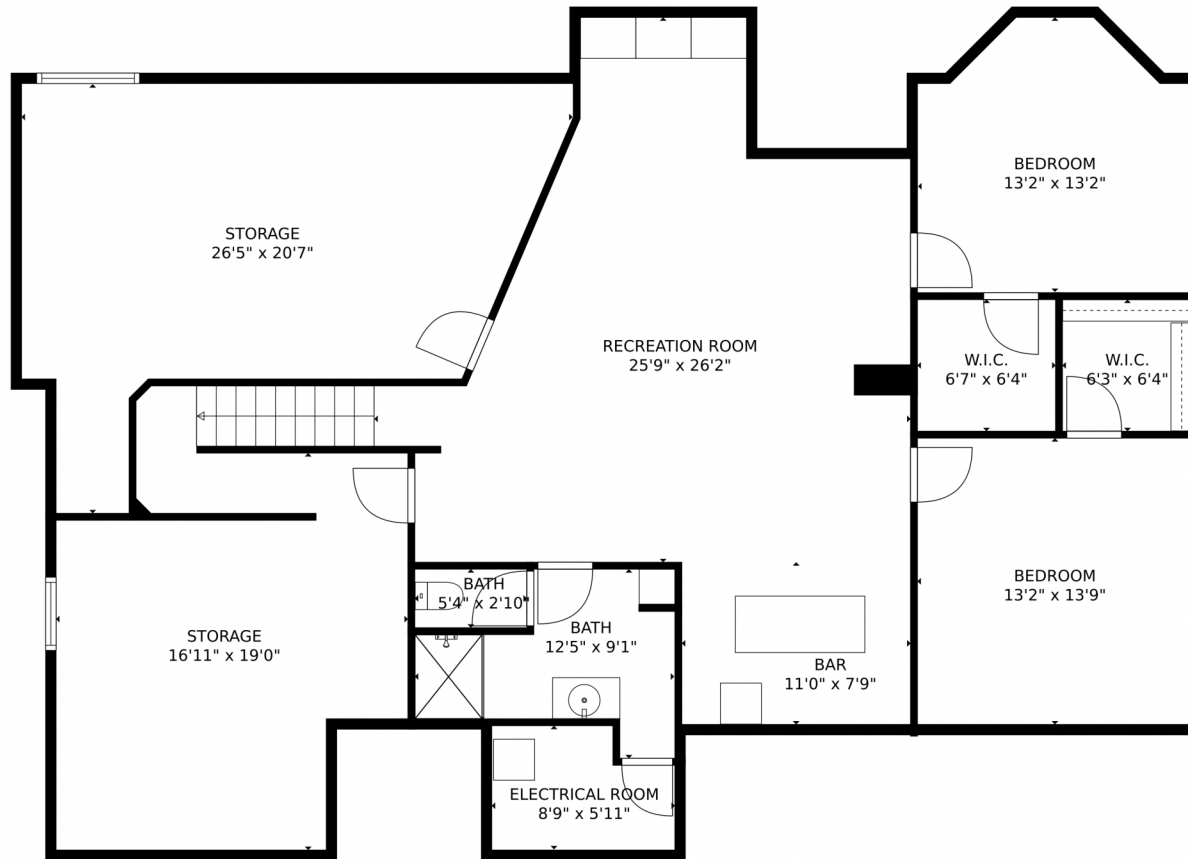
Disclaimer: Sizes and Dimensions are Approximate, Actual May Vary.



**Paul Deakin**  
303-587-0043  
deakinrealestate@msn.com



14185 Dorado Court, Broomfield, CO 80023 – Lower Level



GROSS INTERNAL AREA  
Below Ground: 1137 sq. ft, FLOOR 2: 1848 sq. ft, FLOOR 3: 677 sq. ft  
EXCLUDED AREAS: ELECTRICAL ROOM: 47 sq. ft, STORAGE: 663 sq. ft, GARAGE: 659 sq. ft,  
PORCH: 35 sq. ft, PATIO: 1624 sq. ft, FIREPLACE: 10 sq. ft  
TOTAL: 3662 sq. ft  
MEASUREMENTS CALCULATED BY V1Photos.COM ARE DEEMED HIGHLY RELIABLE BUT NOT GUARANTEED.



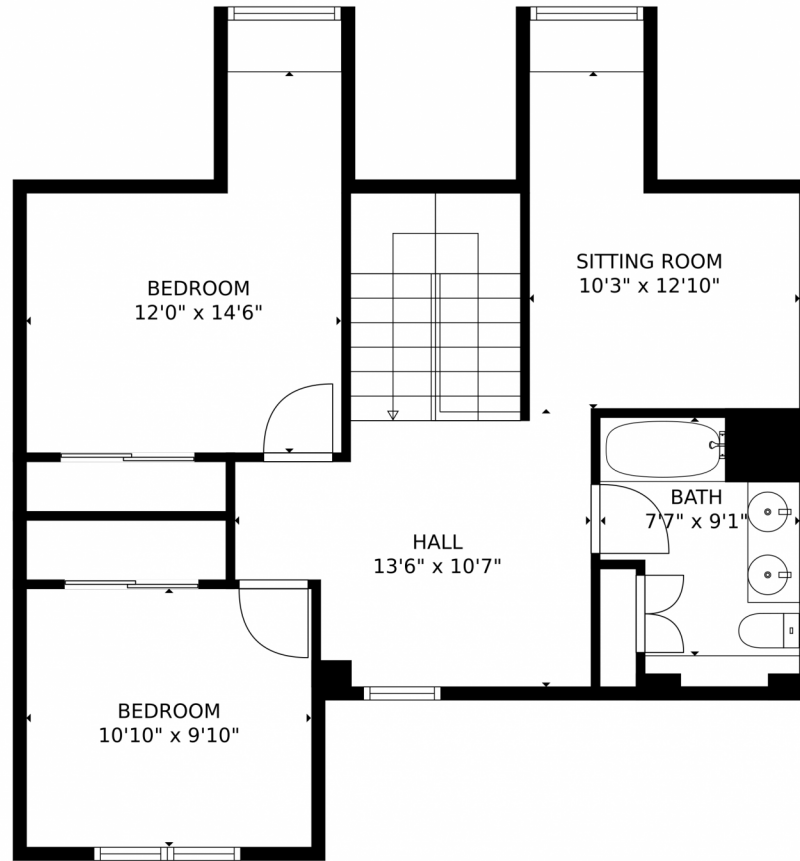
Disclaimer: Sizes and Dimensions are Approximate, Actual May Vary.



Paul Deakin  
303-587-0043  
deakinrealestate@msn.com



# 14185 Dorado Court, Broomfield, CO 80023 – Upper Level



GROSS INTERNAL AREA  
Below Ground: 1137 sq. ft, FLOOR 2: 1848 sq. ft, FLOOR 3: 677 sq. ft  
EXCLUDED AREAS: ELECTRICAL ROOM: 47 sq. ft, STORAGE: 663 sq. ft, GARAGE: 659 sq. ft,  
PORCH: 35 sq. ft, PATIO: 1624 sq. ft, FIREPLACE: 10 sq. ft  
TOTAL: 3662 sq. ft  
MEASUREMENTS CALCULATED BY V1Photos.com ARE DEEMED HIGHLY RELIABLE BUT NOT GUARANTEED.



Disclaimer: Sizes and Dimensions are Approximate, Actual May Vary.



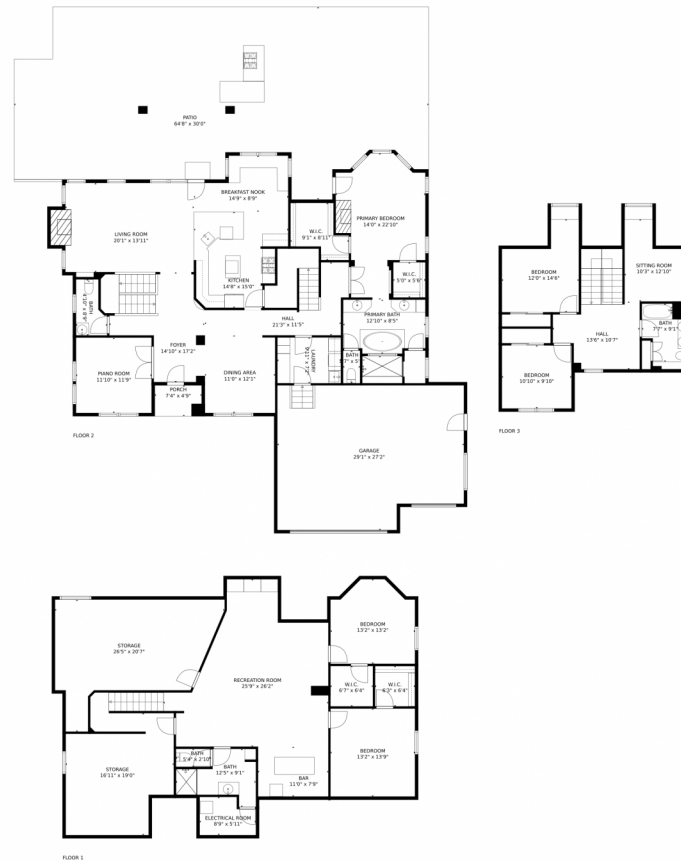
Paul Deakin  
303-587-0043  
deakinrealestate@msn.com



Scan code  
for more  
property  
details



# 14185 Dorado Court, Broomfield, CO 80023 – All Levels



GROSS INTERNAL AREA  
Below Ground: 1137 sq. ft, FLOOR 2: 1848 sq. ft, FLOOR 3: 677 sq. ft  
EXCLUDED AREAS: ELECTRICAL ROOM: 47 sq. ft, STORAGE: 663 sq. ft, GARAGE: 659 sq. ft,  
PORCH: 35 sq. ft, PATIO: 1624 sq. ft, FIREPLACE: 10 sq. ft  
TOTAL: 3662 sq. ft  
MEASUREMENTS CALCULATED BY V1Photos.com ARE DEEMED HIGHLY RELIABLE BUT NOT GUARANTEED.



Disclaimer: Sizes and Dimensions are Approximate, Actual May Vary.



Paul Deakin  
303-587-0043  
deakinrealestate@msn.com

