



6120 Trailhead Road, Littleton, CO 80130 - All Levels



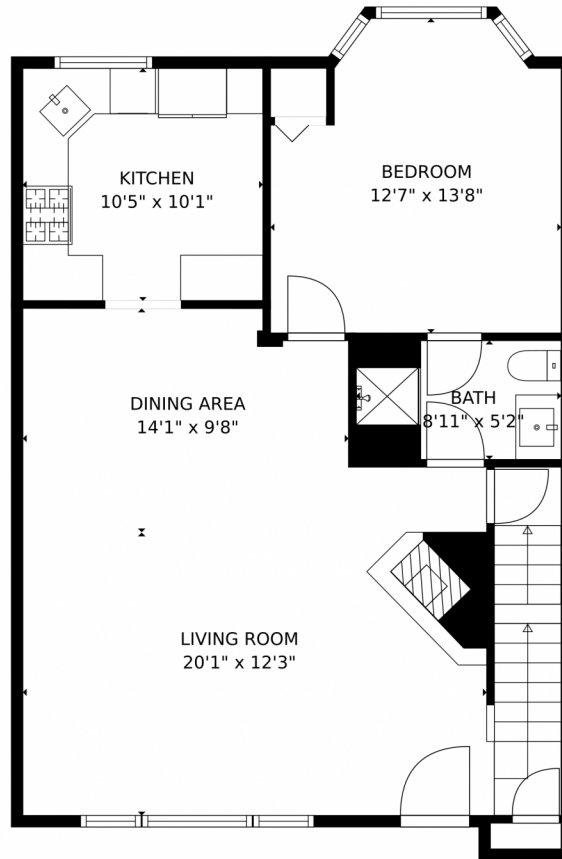
 Townhouse  1832 SQFT



Charles Ford
970-376-3336
charley@vailbeavercreekrealestate.com



6120 Trailhead Road, Littleton, CO 80130 – Main Level



GROSS INTERNAL AREA
Below Ground: 133 sq. ft, FLOOR 2: 775 sq. ft, FLOOR 3: 724 sq. ft
EXCLUDED AREAS: ELECTRICAL ROOM: 125 sq. ft, GARAGE: 473 sq. ft
TOTAL: 1632 sq. ft
MEASUREMENTS CALCULATED BY V1Photos.com ARE DEEMED HIGHLY RELIABLE BUT NOT GUARANTEED.



Disclaimer: Sizes and Dimensions are Approximate, Actual May Vary.

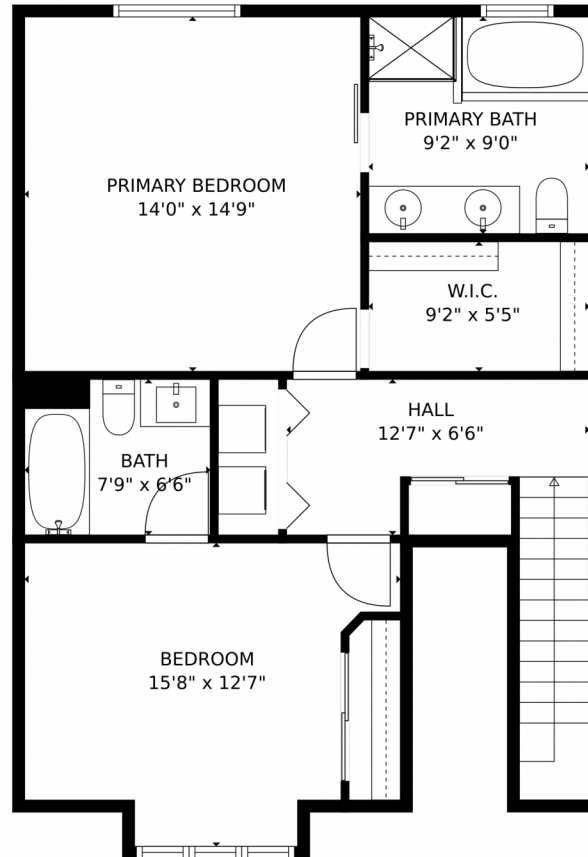


Charles Ford
970-376-3336
charley@vailbeavercreekrealestate.com



Scan code
for more
property
details

6120 Trailhead Road, Littleton, CO 80130 – Upper Level



GROSS INTERNAL AREA
Below Ground: 133 sq. ft, FLOOR 2: 775 sq. ft, FLOOR 3: 724 sq. ft
EXCLUDED AREAS: ELECTRICAL ROOM: 125 sq. ft, GARAGE: 473 sq. ft
TOTAL: 1632 sq. ft
MEASUREMENTS CALCULATED BY V1Photos.com ARE DEEMED HIGHLY RELIABLE BUT NOT GUARANTEED.



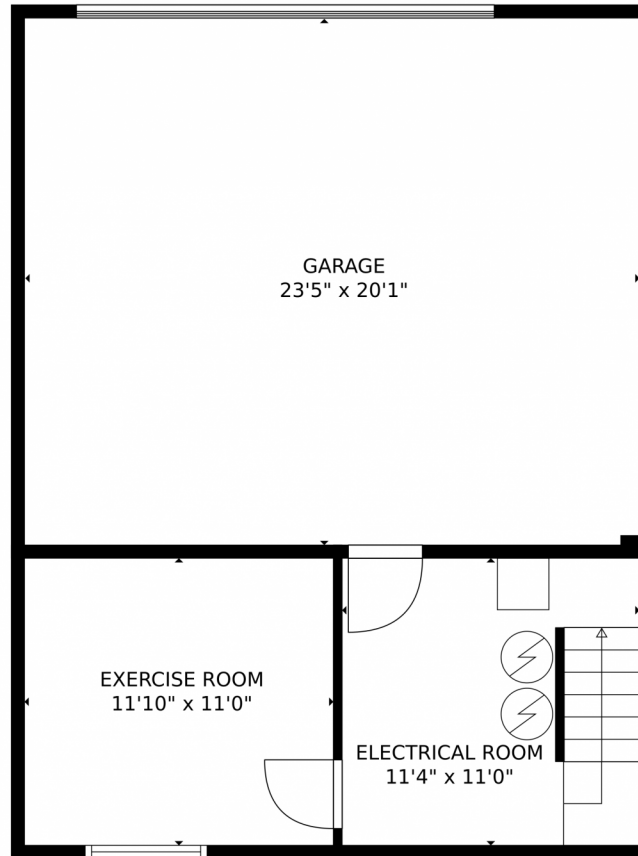
Disclaimer: Sizes and Dimensions are Approximate, Actual May Vary.



Charles Ford
970-376-3336
charley@vailbeavercreekrealestate.com



6120 Trailhead Road, Littleton, CO 80130 — Lower Level



GROSS INTERNAL AREA
Below Ground: 133 sq. ft, FLOOR 2: 775 sq. ft, FLOOR 3: 724 sq. ft
EXCLUDED AREAS: ELECTRICAL ROOM: 125 sq. ft, GARAGE: 473 sq. ft
TOTAL: 1632 sq. ft
MEASUREMENTS CALCULATED BY V1Photos.com ARE DEEMED HIGHLY RELIABLE BUT NOT GUARANTEED.



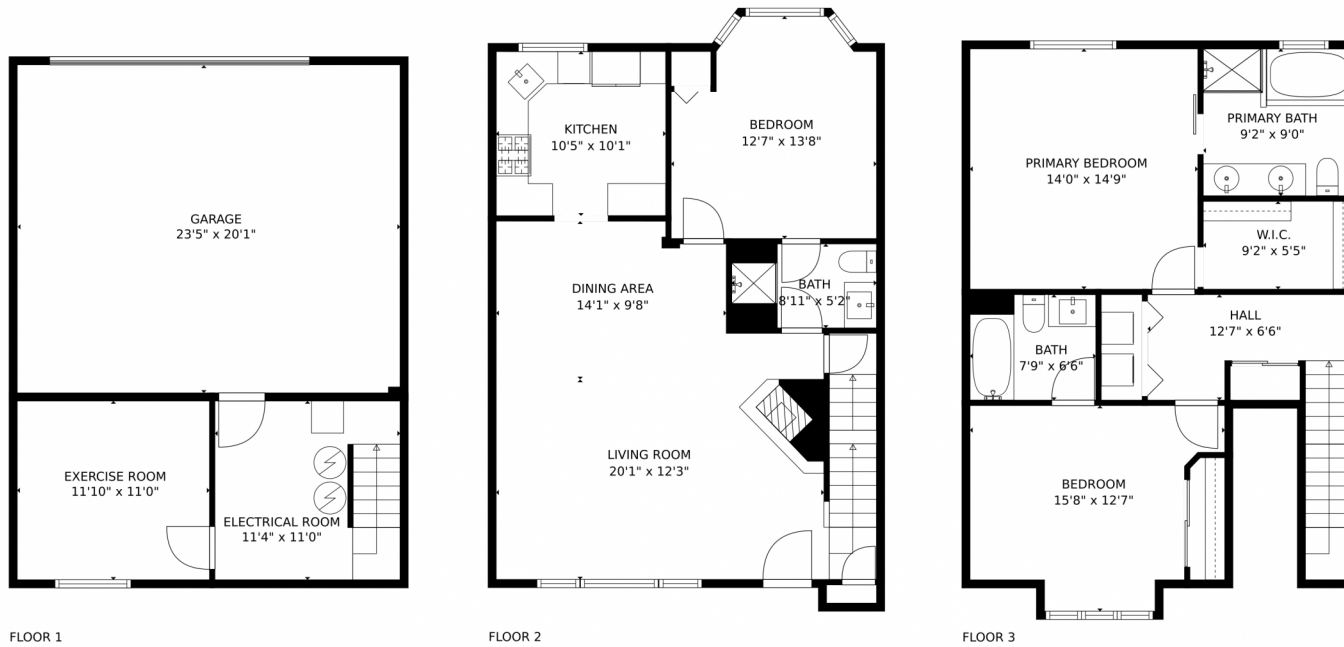
Disclaimer: Sizes and Dimensions are Approximate, Actual May Vary.



Charles Ford
970-376-3336
charley@vailbeavercreekrealestate.com



6120 Trailhead Road, Littleton, CO 80130 – All Levels



GROSS INTERNAL AREA
Below Ground: 133 sq. ft, FLOOR 2: 775 sq. ft, FLOOR 3: 724 sq. ft
EXCLUDED AREAS: ELECTRICAL ROOM: 125 sq. ft, GARAGE: 473 sq. ft
TOTAL: 1632 sq. ft
MEASUREMENTS CALCULATED BY V1Photos.com ARE DEEMED HIGHLY RELIABLE BUT NOT GUARANTEED.



Disclaimer: Sizes and Dimensions are Approximate, Actual May Vary.



Charles Ford
970-376-3336
charley@vailbeavercreekrealestate.com

