




1736 South Humboldt Street, Denver, CO 80210 - All Levels



 Single Family

 2238 SQFT

 3 Beds

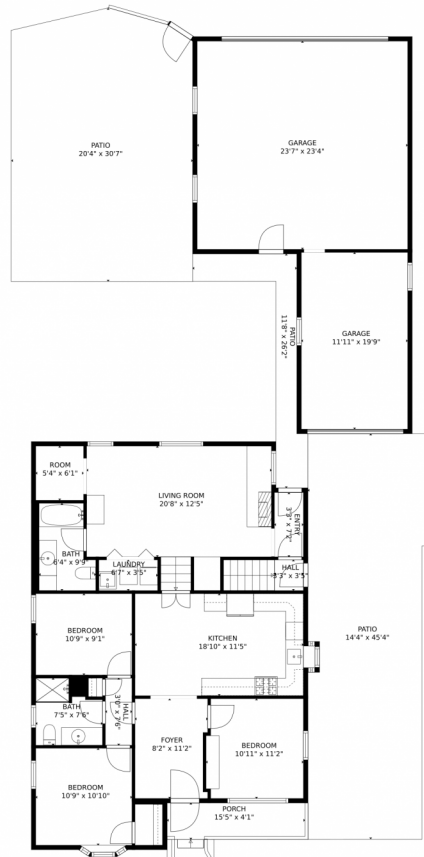
 2/1 Baths



Taylor Haas
303-665-7368
taylorh@coloradorpm.com
<https://www.coloradorpm.com/available-rental-properties-denver>



1736 South Humboldt Street, Denver, CO 80210 – Main Level



GROSS INTERNAL AREA
Below Ground: 787 sq. ft, FLOOR 2: 1242 sq. ft
EXCLUDED AREAS: GARAGE: 784 sq. ft, PORCH: 64 sq. ft, PATIO: 1285 sq. ft
TOTAL: 2029 sq. ft
MEASUREMENTS CALCULATED BY V1Photos.com ARE DEEMED HIGHLY RELIABLE BUT NOT GUARANTEED.



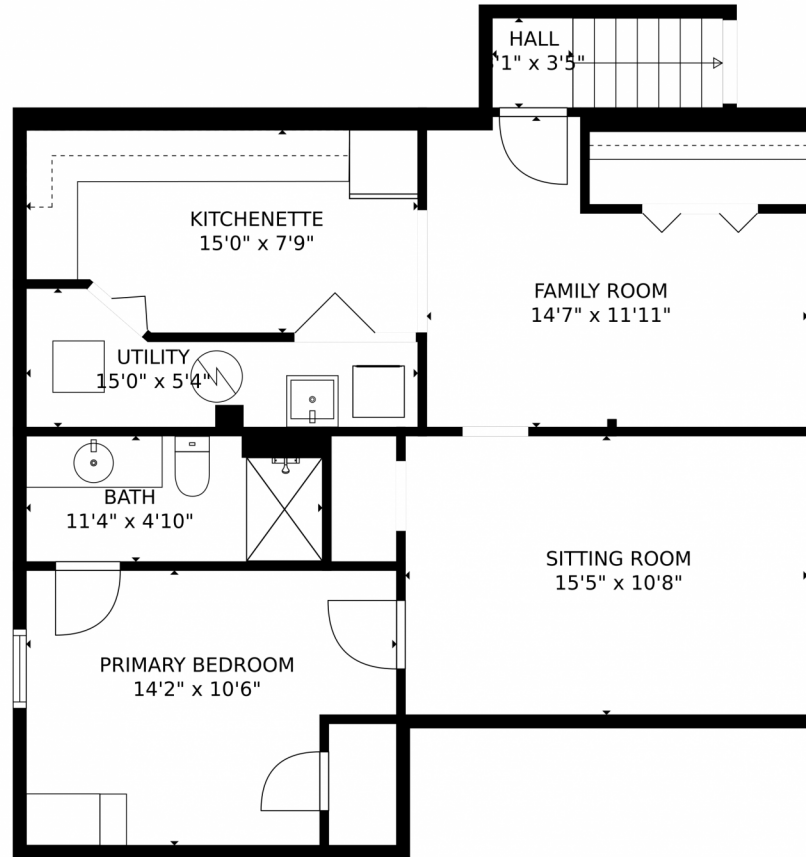
Disclaimer: Sizes and Dimensions are Approximate, Actual May Vary.



Taylor Haas
303-665-7368
taylorh@coloradorpm.com
<https://www.coloradorpm.com/available-rental-properties-denv>



1736 South Humboldt Street, Denver, CO 80210 – Lower Level



GROSS INTERNAL AREA
Below Ground: 787 sq. ft, FLOOR 2: 1242 sq. ft
EXCLUDED AREAS: GARAGE: 784 sq. ft, PORCH: 64 sq. ft, PATIO: 1285 sq. ft
TOTAL: 2029 sq. ft
MEASUREMENTS CALCULATED BY V1Photos.com ARE DEEMED HIGHLY RELIABLE BUT NOT GUARANTEED.



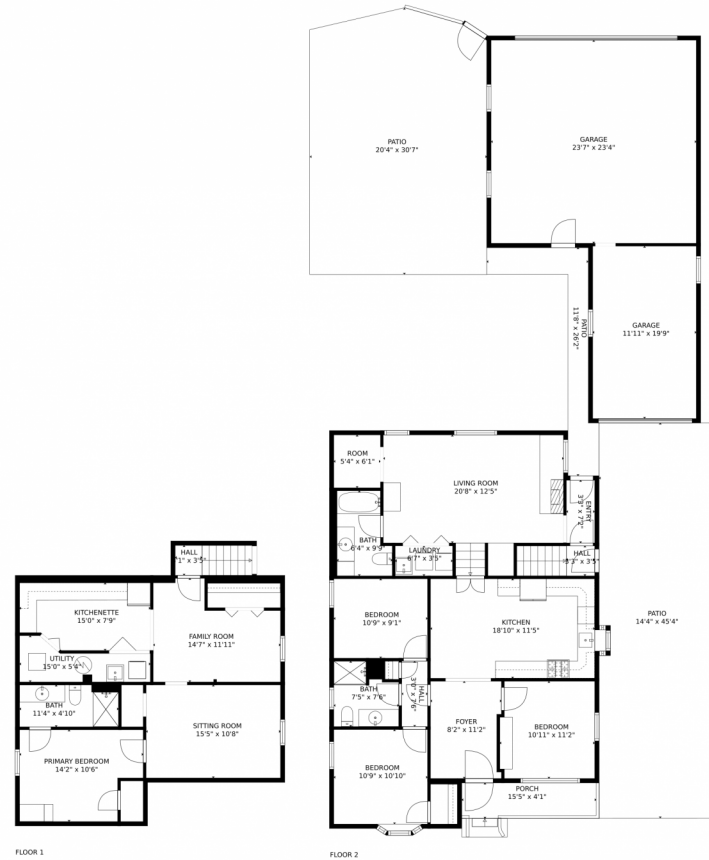
Disclaimer: Sizes and Dimensions are Approximate, Actual May Vary.



Taylor Haas
303-665-7368
taylorh@coloradorpm.com
<https://www.coloradorpm.com/available-rental-properties-denv>



1736 South Humboldt Street, Denver, CO 80210 – All Levels



GROSS INTERNAL AREA
Below Ground: 787 sq. ft, FLOOR 2: 1242 sq. ft
EXCLUDED AREAS: GARAGE: 784 sq. ft, PORCH: 64 sq. ft, PATIO: 1285 sq. ft
TOTAL: 2029 sq. ft
MEASUREMENTS CALCULATED BY V1Photos.com ARE DEEMED HIGHLY RELIABLE BUT NOT GUARANTEED.



Disclaimer: Sizes and Dimensions are Approximate, Actual May Vary.



Taylor Haas
303-665-7368
taylorh@coloradorpm.com
<https://www.coloradorpm.com/available-rental-properties-denver>

