



Condominium



1596 SQFT



3 Beds



1 Baths

## PROPERTY DETAILS

Commercial Work from Home Condo



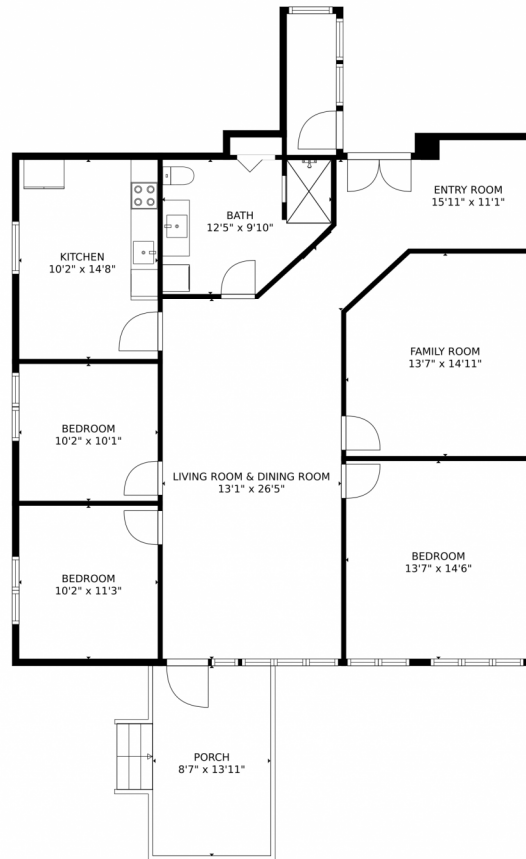
**Matt Bachus**  
720-644-9363  
matt@tuppersteam.com



Scan code  
for more  
property  
details



29713 Troutdale Scenic Drive, Evergreen, CO 80439 — Main Level



GROSS INTERNAL AREA  
FLOOR 1: 1432 sq. ft  
EXCLUDED AREAS: PORCH: 121 sq. ft  
TOTAL: 1432 sq. ft  
MEASUREMENTS CALCULATED BY V1Photos.com ARE DEEMED HIGHLY RELIABLE BUT NOT GUARANTEED.



Disclaimer: Sizes and Dimensions are Approximate, Actual May Vary.



**Matt Bachus**  
720-644-9363  
matt@tuppersteam.com

