



2326 S Oswego St
Aurora, CO 80014
COMMUNITY: Berkshire Village

MLS # 1582509
PRICE \$688,000



Single Family



3449 SQFT



4 Beds



3/1 Baths



2 Car



0.19 Acre

PROPERTY DETAILS

This beautiful home is a perfect fit for anyone looking for 1-level living! *You'll love the warm & inviting entry that leads to an impressive layout *Gorgeous hardwood floors & elegant crown molding completely elevates the home to a different level *The kitchen is the heart of the home with beautiful quartz counters, large island, updated cabinets & tile floors *Embrace the warmth of the double sided fireplace in the great room or the living room *Feel proud to host large dinner parties or cozy meals & show off the gorgeous wood in-laid floors in the formal dining area *The primary suite is an oasis of calm & serenity with a 5-piece en suite bath & large walk-in closet *2 additional bedrooms on the main level are spacious & bright *Enjoy the convenience of the main floor laundry *Expansive windows provide amazing natural light *The fully finished basement is the perfect set up to entertain at the wet bar or host game night in the additional rec room *Sweat & relax all your stress away in your own private sauna *The basement also includes a 4th bedroom with a walk-in closet & updated bathroom *Newer HVAC system (2021) with transferrable warranty *Stay cool under the permanently covered back patio *Enjoy hosting summer BBQ's & outdoor gatherings in your lush & private backyard *Located in the highly coveted Cherry Creek school district & walking distance to Eastridge K-5 *Amazing location near golf, dining, grocery & Cherry Creek Reservoir *Enjoy the ease & convenience



Amy Cammack
303-981-4571
amy@cammackgroup.com



Scan code
for more
property
details

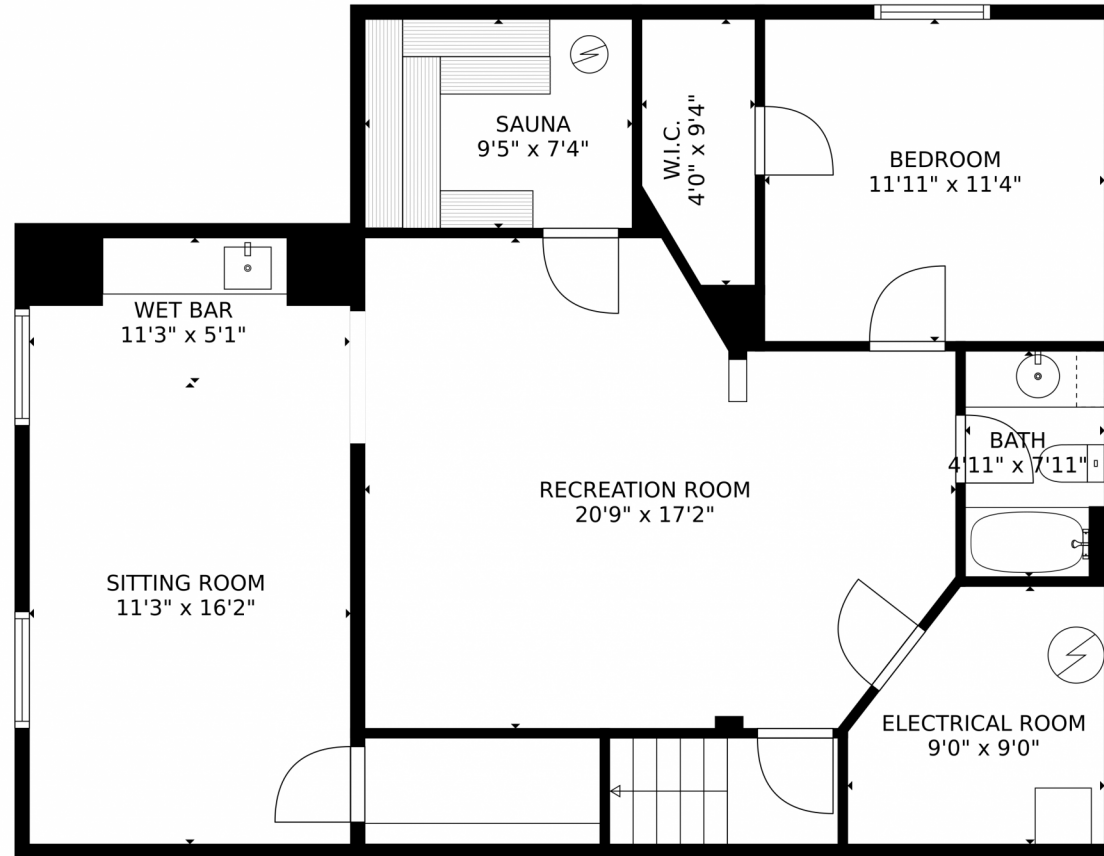


of the nearby Nine Mile lightrail station or hop on 225 to get to anywhere else you want to go *Don't miss out on the opportunity to live in this beautiful & move-in ready home!



Amy Cammack
303-981-4571
amy@cammackgroup.com





GROSS INTERNAL AREA
Below Ground: 929 sq. ft, FLOOR 2: 2187 sq. ft
EXCLUDED AREAS: ELECTRICAL ROOM: 71 sq. ft, GARAGE: 338 sq. ft, PATIO: 408 sq. ft,
PORCH: 28 sq. ft
TOTAL: 3116 sq. ft
MEASUREMENTS CALCULATED BY V1Photos.COM ARE DEEMED HIGHLY RELIABLE BUT NOT GUARANTEED.



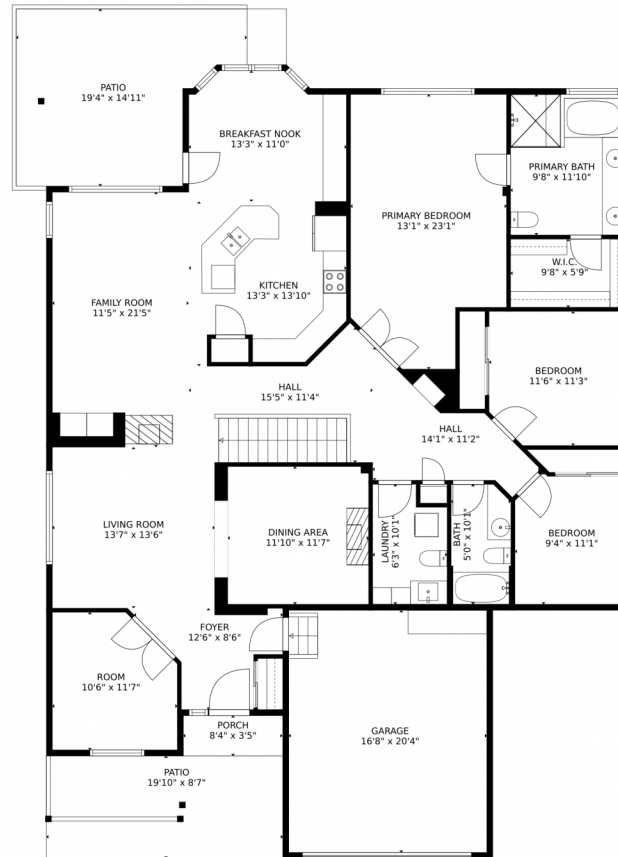
Disclaimer: Sizes and Dimensions are Approximate, Actual May Vary.



Amy Cammack
303-981-4571
amy@cammackgroup.com



2326 S Oswego St, Aurora, CO 80014 – Main Level



GROSS INTERNAL AREA
Below Ground: 929 sq. ft, FLOOR 2: 2187 sq. ft
EXCLUDED AREAS: ELECTRICAL ROOM: 71 sq. ft, GARAGE: 338 sq. ft, PATIO: 408 sq. ft,
PORCH: 28 sq. ft
TOTAL: 3116 sq. ft
MEASUREMENTS CALCULATED BY V1Photos.COM ARE DEEMED HIGHLY RELIABLE BUT NOT GUARANTEED.



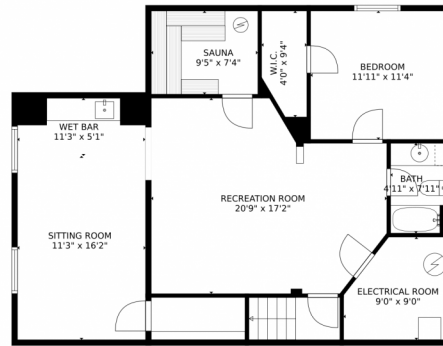
Disclaimer: Sizes and Dimensions are Approximate, Actual May Vary.



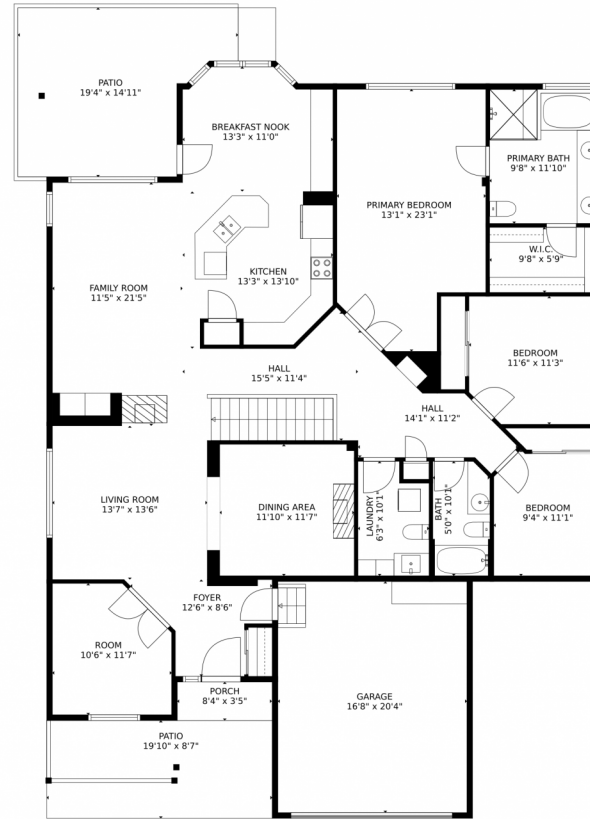
Amy Cammack
303-981-4571
amy@cammackgroup.com



2326 S Oswego St, Aurora, CO 80014 – All Levels



FLOOR 1



FLOOR 2

GROSS INTERNAL AREA
 Below Ground: 929 sq. ft, FLOOR 2: 2187 sq. ft
 EXCLUDED AREAS: ELECTRICAL ROOM: 71 sq. ft, GARAGE: 338 sq. ft, PATIO: 408 sq. ft,
 PORCH: 28 sq. ft
 TOTAL: 3116 sq. ft
 MEASUREMENTS CALCULATED BY V1Photos.com ARE DEEMED HIGHLY RELIABLE BUT NOT GUARANTEED.



Disclaimer: Sizes and Dimensions are Approximate, Actual May Vary.



Amy Cammack
 303-981-4571
 amy@cammackgroup.com

