




 Single Family

 2418 SQFT

 4 Beds

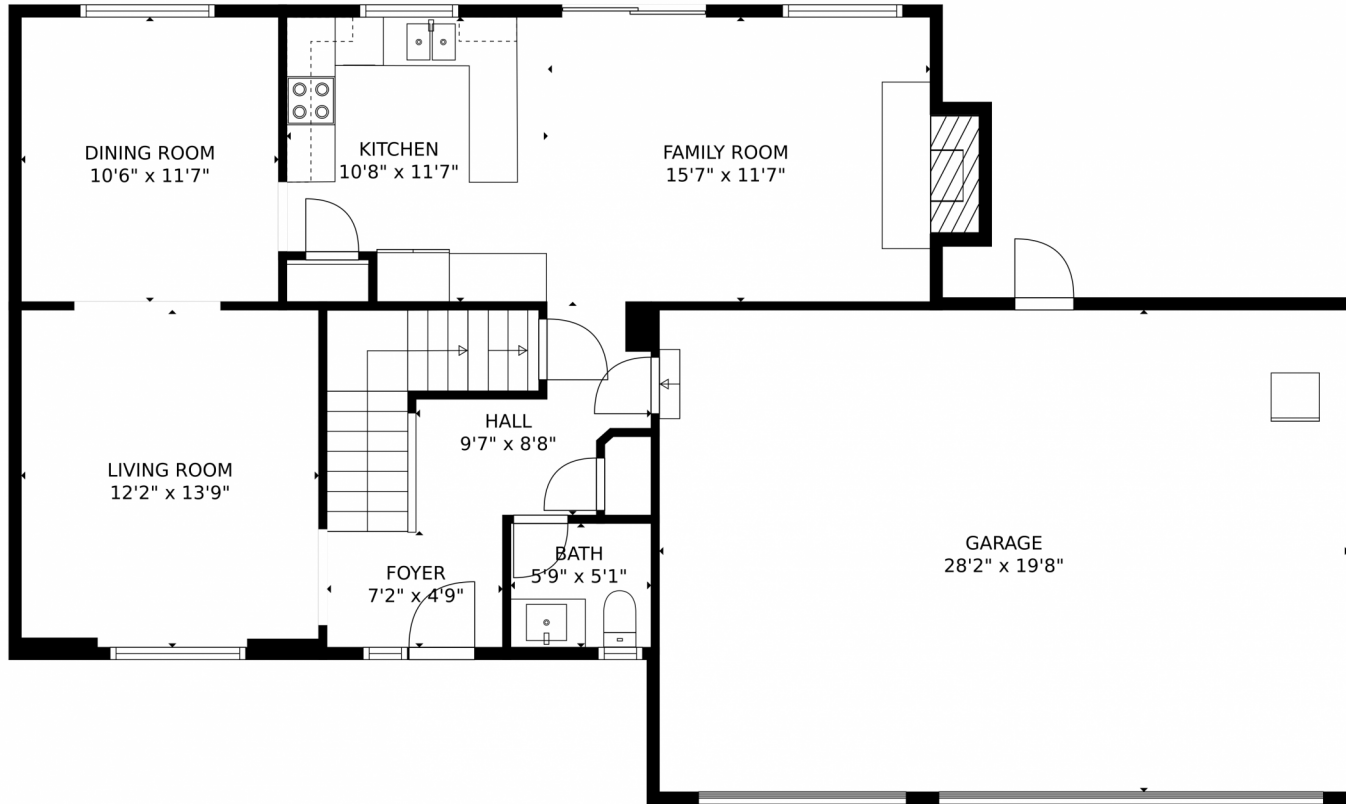
 3/1 Baths



Tina Kulp
303-489-6876
tinakulp.tk@gmail.com
<http://lifedesignsrealestate.com>



1363 Loch Lomond Avenue, Broomfield, CO 80020 – Main Level



GROSS INTERNAL AREA
Below Ground: 732 sq. ft, FLOOR 2: 797 sq. ft, FLOOR 3: 740 sq. ft
EXCLUDED AREAS: GARAGE: 554 sq. ft, FIREPLACE: 7 sq. ft, OPEN TO BELOW: 55 sq. ft
TOTAL: 2269 sq. ft
MEASUREMENTS CALCULATED BY V1Photos.com ARE DEEMED HIGHLY RELIABLE BUT NOT GUARANTEED.



Disclaimer: Sizes and Dimensions are Approximate, Actual May Vary.

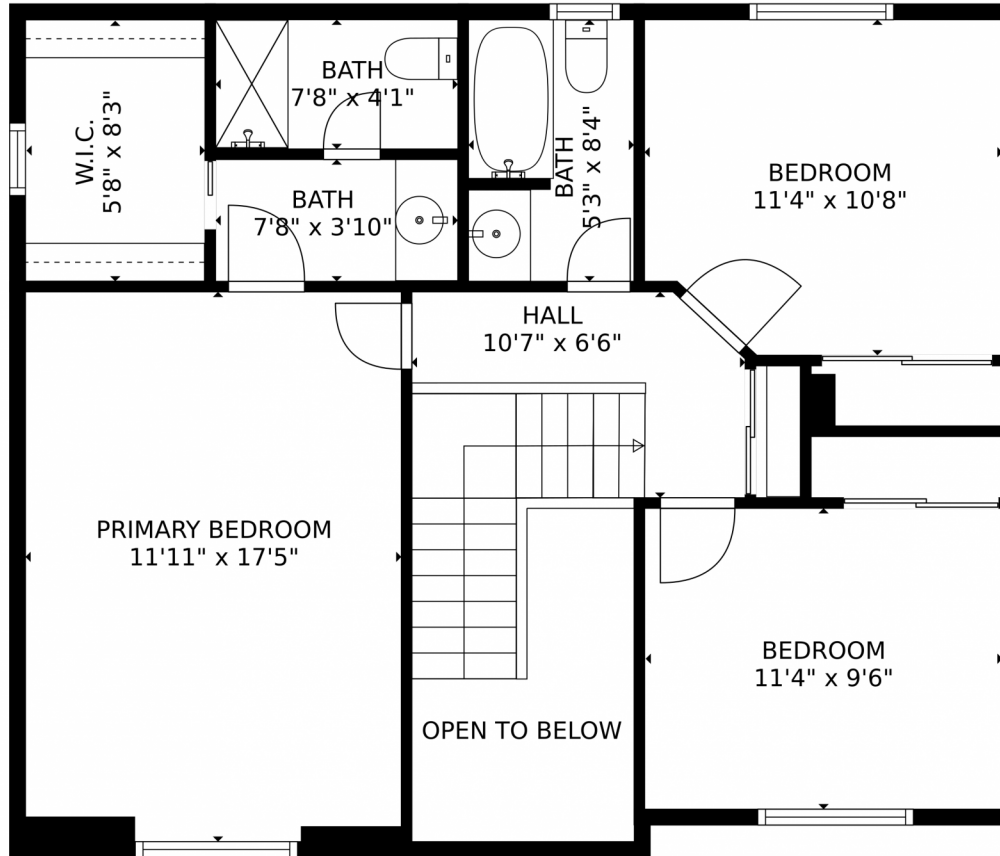


Tina Kulp
303-489-6876
tinakulp.tk@gmail.com
<http://lifedesignsrealestate.com>



Scan code
for more
property
details

1363 Loch Lomond Avenue, Broomfield, CO 80020 – Upper Level



GROSS INTERNAL AREA
Below Ground: 732 sq. ft, FLOOR 2: 797 sq. ft, FLOOR 3: 740 sq. ft
EXCLUDED AREAS: GARAGE: 554 sq. ft, FIREPLACE: 7 sq. ft, OPEN TO BELOW: 55 sq. ft
TOTAL: 2269 sq. ft
MEASUREMENTS CALCULATED BY V1Photos.com ARE DEEMED HIGHLY RELIABLE BUT NOT GUARANTEED.



Disclaimer: Sizes and Dimensions are Approximate, Actual May Vary.



Tina Kulp
303-489-6876
tinakulp.tk@gmail.com
<http://lifedesignsrealestate.com>



1363 Loch Lomond Avenue, Broomfield, CO 80020 – Lower Level



GROSS INTERNAL AREA
Below Ground: 732 sq. ft, FLOOR 2: 797 sq. ft, FLOOR 3: 740 sq. ft
EXCLUDED AREAS: GARAGE: 554 sq. ft, FIREPLACE: 7 sq. ft, OPEN TO BELOW: 55 sq. ft
TOTAL: 2269 sq. ft
MEASUREMENTS CALCULATED BY V1Photos.com ARE DEEMED HIGHLY RELIABLE BUT NOT GUARANTEED.



Disclaimer: Sizes and Dimensions are Approximate, Actual May Vary.



Tina Kulp
303-489-6876
tinakulp.tk@gmail.com
<http://lifedesignsrealestate.com>



1363 Loch Lomond Avenue, Broomfield, CO 80020 – All Levels



GROSS INTERNAL AREA
Below Ground: 732 sq. ft, FLOOR 2: 797 sq. ft, FLOOR 3: 740 sq. ft
EXCLUDED AREAS: GARAGE: 554 sq. ft, FIREPLACE: 7 sq. ft, OPEN TO BELOW: 55 sq. ft
TOTAL: 2269 sq. ft
MEASUREMENTS CALCULATED BY V1Photos.COM ARE DEEMED HIGHLY RELIABLE BUT NOT GUARANTEED.



Disclaimer: Sizes and Dimensions are Approximate, Actual May Vary.



Tina Kulp
303-489-6876
tinakulp.tk@gmail.com
<http://lifedesignsrealestate.com>



Scan code
for more
property
details

