



1605 Pawnee Parkway
 Elizabeth, CO 80107
 COMMUNITY: Pawnee Hills

MLS # 6413261
 PRICE \$925,000



Single Family



3735 SQFT



4 Beds



3 Baths



10+ Car



5.01 Acre

PROPERTY DETAILS

OPEN HOUSE SATURDAY 7/8/23 10:00 am - NOON. You have to experience this home and its beautiful setting. Updated and well-maintained on a peaceful 5-acre lot. Enjoy your hobbies in the large 40' x 72' building with concrete floors and 220v electricity. Two huge doors at each end of the building allowing drive-through. The building also has a 12' overhang which could be used to shelter animals. You will enjoy living in this great ranch floor plan with 4 bedrooms, 3 full baths, and a 3-car attached garage. The kitchen boasts granite counters, a walk-in pantry, and opens to the family room and dining area for interaction with family and/or guests. The freshly painted bedrooms are nice size with 3 on the main level. You will love the remodeled master bath with the soaker tub and large walk-in shower. The walkout basement is perfect for an at-home office, rec room, or gaming/play area. The opportunities are endless. The gas fireplace downstairs keeps the area toasty warm. The exterior of the home has Tyvek weather barrier and newly painted Hardie board siding. The carport offers additional coverage for a boat or hay storage. Prepare to relax as the deer will greet you over your morning coffee, or at sunset on the patio. One of Elbert County's few subdivisions with natural gas. This equestrian-oriented neighborhood has bridal paths, an arena, and even a POOL and clubhouse.



Cindy Rein

720-272-4890

cindy@reinrealty.net

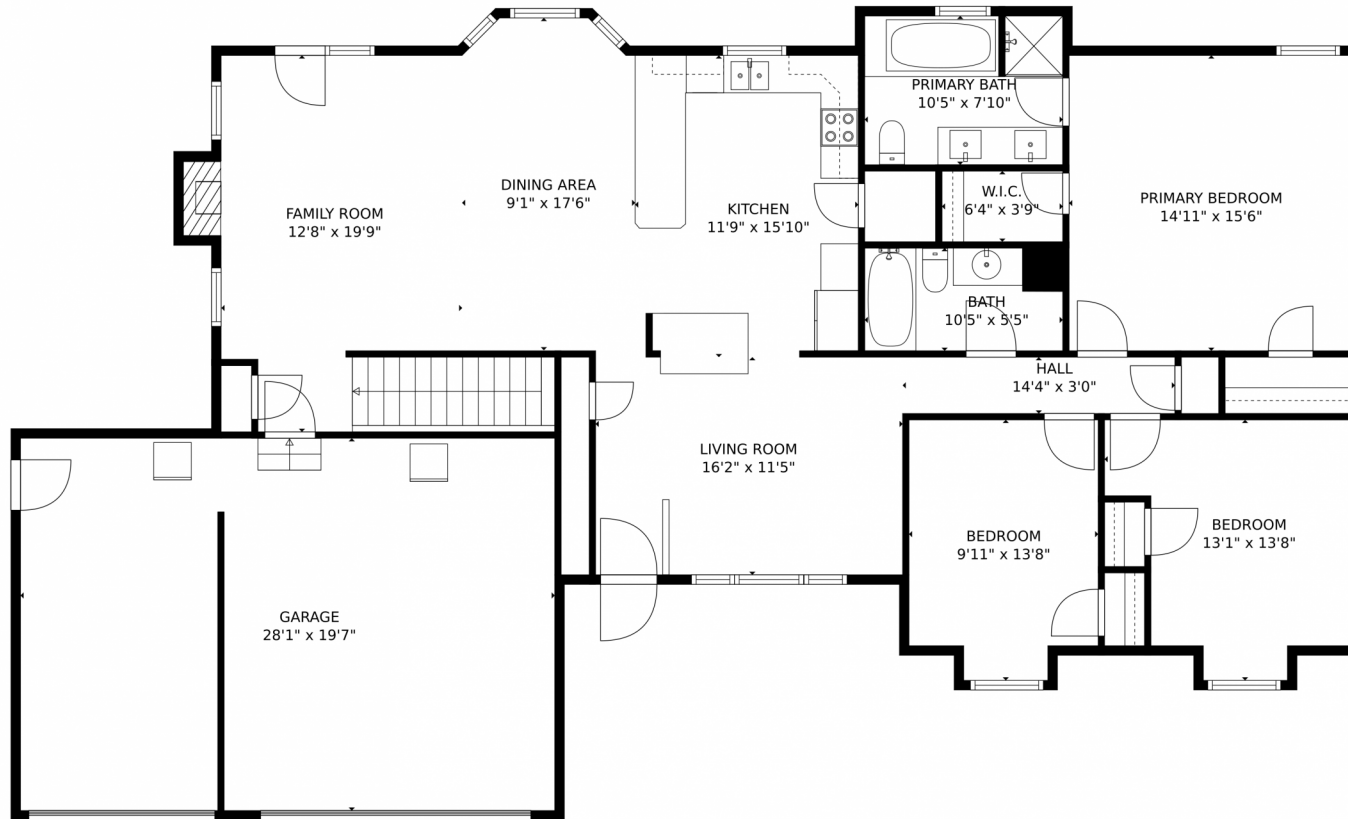
<https://www.SherlockHomes.net>



Scan code
 for more
 property
 details



1605 Pawnee Parkway, Elizabeth, CO 80107 – Main Floor



GROSS INTERNAL AREA
Below Ground: 1135 sq. ft, FLOOR 2: 1629 sq. ft
EXCLUDED AREAS: EXERCISE ROOM: 291 sq. ft, GARAGE: 544 sq. ft, FIREPLACE: 6 sq. ft
TOTAL: 2764 sq. ft
MEASUREMENTS CALCULATED BY V1Photos.com ARE DEEMED HIGHLY RELIABLE BUT NOT GUARANTEED.



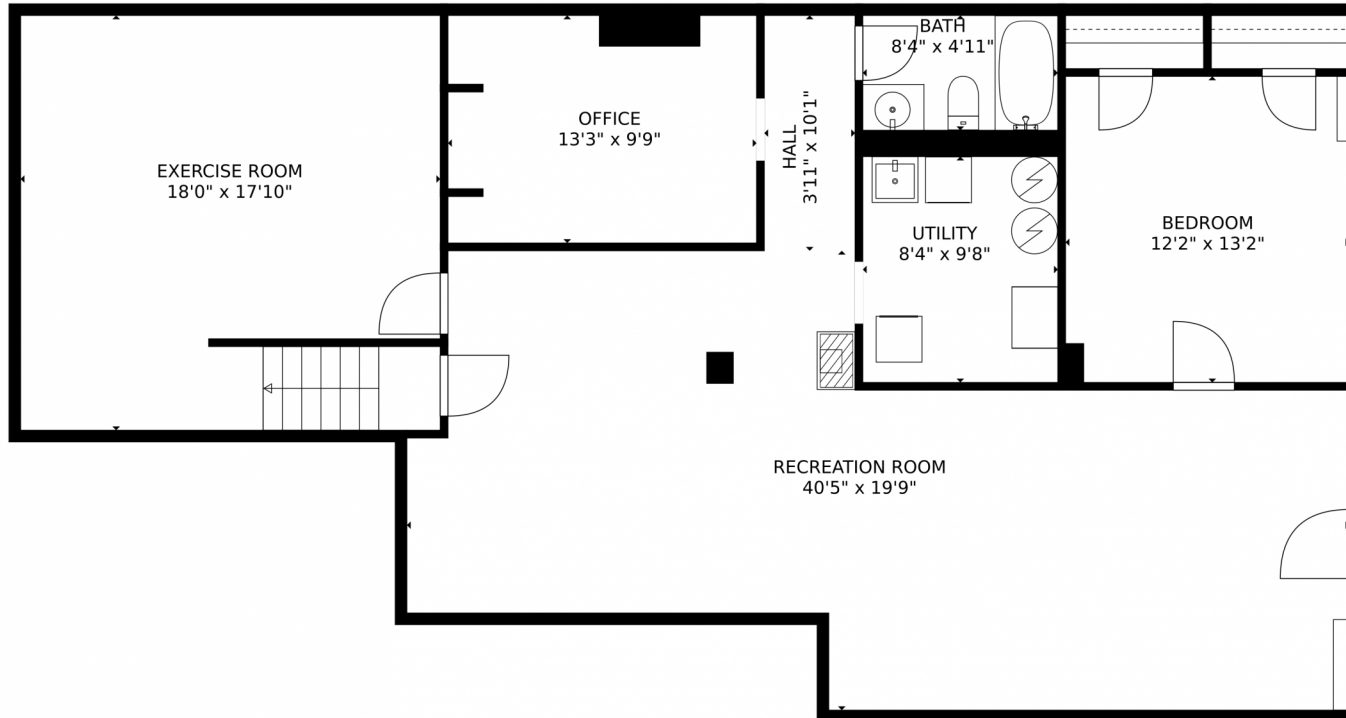
Disclaimer: Sizes and Dimensions are Approximate, Actual May Vary.



Cindy Rein
720-272-4890
cindy@reinrealty.net
<https://www.SherlockHomes.net>



1605 Pawnee Parkway, Elizabeth, CO 80107 – Lower Floor



GROSS INTERNAL AREA
Below Ground: 1135 sq. ft, FLOOR 2: 1629 sq. ft
EXCLUDED AREAS: EXERCISE ROOM: 291 sq. ft, GARAGE: 544 sq. ft, FIREPLACE: 6 sq. ft
TOTAL: 2764 sq. ft
MEASUREMENTS CALCULATED BY V1Photos.com ARE DEEMED HIGHLY RELIABLE BUT NOT GUARANTEED.



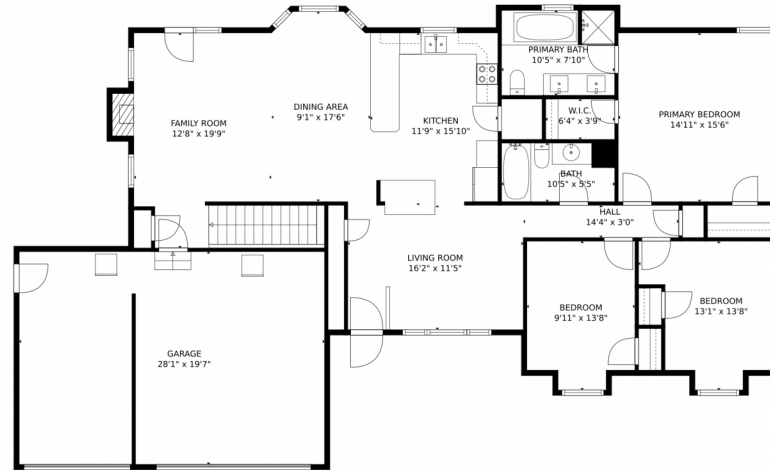
Disclaimer: Sizes and Dimensions are Approximate, Actual May Vary.



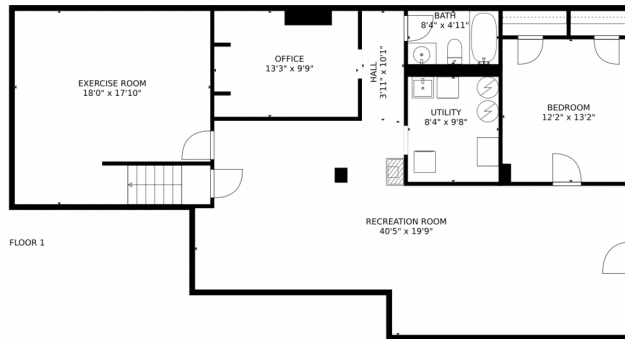
Cindy Rein
720-272-4890
cindy@reinrealty.net
<https://www.SherlockHomes.net>



1605 Pawnee Parkway, Elizabeth, CO 80107 – All Floors



FLOOR 2



FLOOR 1

GROSS INTERNAL AREA
Below Ground: 1135 sq. ft, FLOOR 2: 1629 sq. ft
EXCLUDED AREAS: EXERCISE ROOM: 291 sq. ft, GARAGE: 544 sq. ft, FIREPLACE: 6 sq. ft
TOTAL: 2764 sq. ft
MEASUREMENTS CALCULATED BY V1Photos.com ARE DEEMED HIGHLY RELIABLE BUT NOT GUARANTEED.



Disclaimer: Sizes and Dimensions are Approximate, Actual May Vary.



Cindy Rein
720-272-4890
cindy@reinrealty.net
<https://www.SherlockHomes.net>

