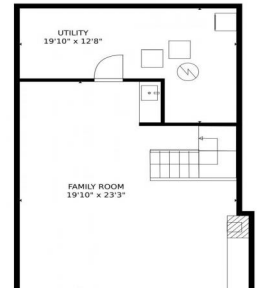






1251 South Monaco Parkway, denver, CO 80224 - Basement



 Townhouse

 1800 SQFT

 3 Beds

 2/2 Baths

 2 Car



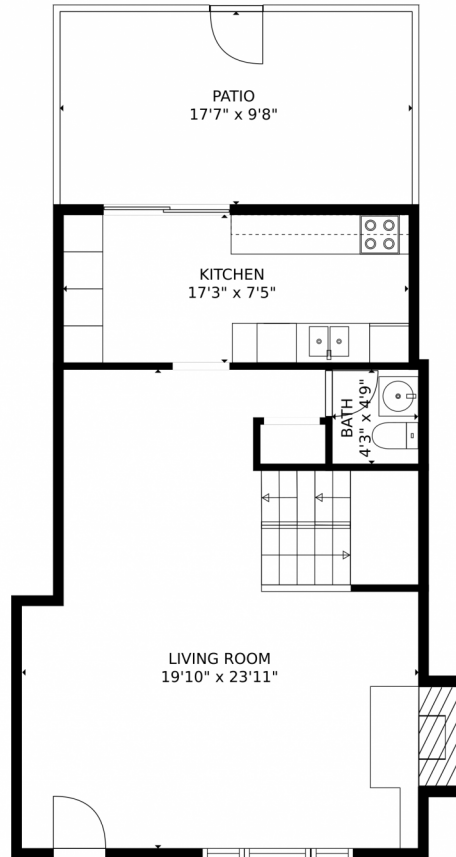
**Joey Hoiescu**  
619-806-7014  
joey@luxdenver.com  
<https://www.thepropertysomm.com>



Scan code  
for more  
property  
details



# 1251 South Monaco Parkway, denver, CO 80224 – 1st Floor



GROSS INTERNAL AREA  
Below Ground: 445 sq. ft, FLOOR 2: 587 sq. ft, FLOOR 3: 679 sq. ft  
EXCLUDED AREAS: UTILITY: 187 sq. ft, PATIO: 170 sq. ft, FIREPLACE: 8 sq. ft  
TOTAL: 1711 sq. ft  
MEASUREMENTS CALCULATED BY V1Photos.com ARE DEEMED HIGHLY RELIABLE BUT NOT GUARANTEED.



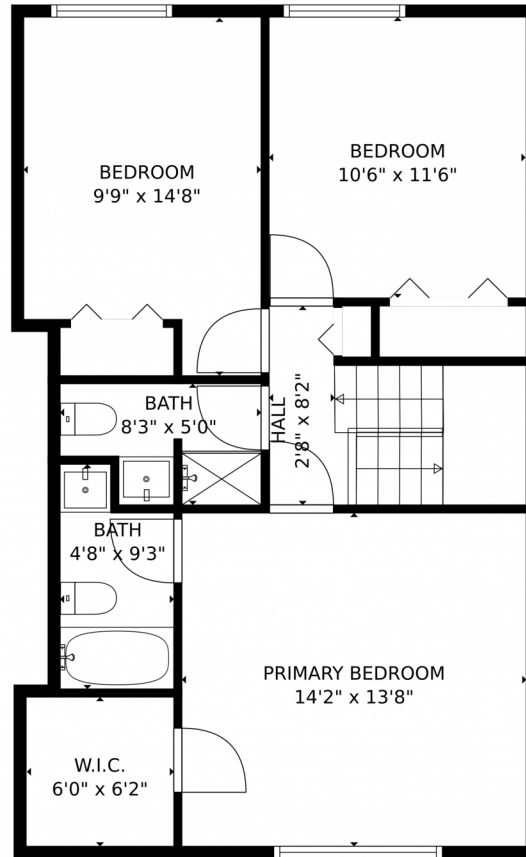
Disclaimer: Sizes and Dimensions are Approximate, Actual May Vary.



**Joey Hoiescu**  
619-806-7014  
joey@luxdenver.com  
<https://www.thepropertysomm.com>



1251 South Monaco Parkway, denver, CO 80224 – 2nd Floor



GROSS INTERNAL AREA  
Below Ground: 445 sq. ft, FLOOR 2: 587 sq. ft, FLOOR 3: 679 sq. ft  
EXCLUDED AREAS: UTILITY: 187 sq. ft, PATIO: 170 sq. ft, FIREPLACE: 8 sq. ft  
TOTAL: 1711 sq. ft  
MEASUREMENTS CALCULATED BY V1Photos.com ARE DEEMED HIGHLY RELIABLE BUT NOT GUARANTEED.



Disclaimer: Sizes and Dimensions are Approximate, Actual May Vary.



**Joey Hoiescu**  
619-806-7014  
joey@luxdenver.com  
<https://www.thepropertysomm.com>



# 1251 South Monaco Parkway, denver, CO 80224 – All Floors



GROSS INTERNAL AREA  
Below Ground: 445 sq. ft, FLOOR 2: 587 sq. ft, FLOOR 3: 679 sq. ft  
EXCLUDED AREAS: UTILITY: 187 sq. ft, PATIO: 170 sq. ft, FIREPLACE: 8 sq. ft  
TOTAL: 1711 sq. ft  
MEASUREMENTS CALCULATED BY V1Photos.com ARE DEEMED HIGHLY RELIABLE BUT NOT GUARANTEED.



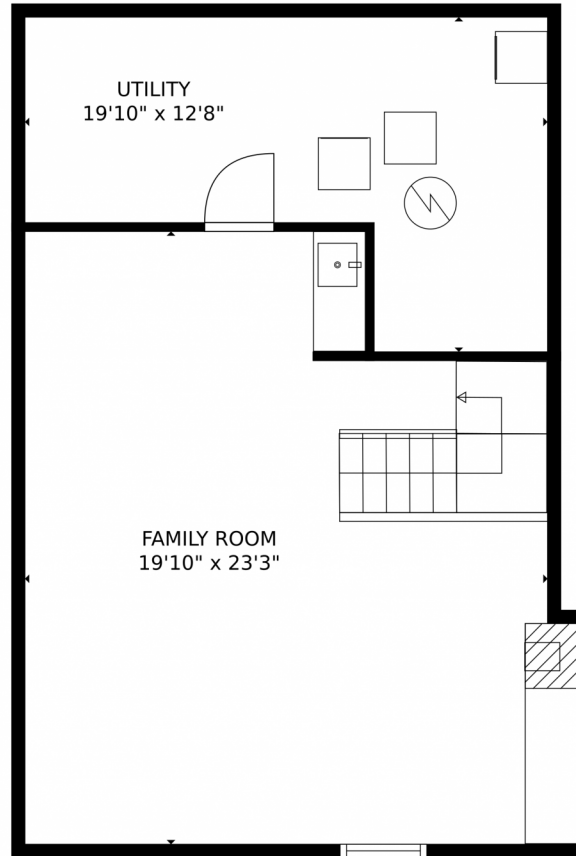
Disclaimer: Sizes and Dimensions are Approximate, Actual May Vary.



**Joey Hoiescu**  
619-806-7014  
joey@luxdenver.com  
<https://www.thepropertysomm.com>



# 1251 South Monaco Parkway, denver, CO 80224 – Basement



GROSS INTERNAL AREA  
Below Ground: 445 sq. ft, FLOOR 2: 587 sq. ft, FLOOR 3: 679 sq. ft  
EXCLUDED AREAS: UTILITY: 187 sq. ft, PATIO: 170 sq. ft, FIREPLACE: 8 sq. ft  
TOTAL: 1711 sq. ft  
MEASUREMENTS CALCULATED BY V1Photos.COM ARE DEEMED HIGHLY RELIABLE BUT NOT GUARANTEED.



Disclaimer: Sizes and Dimensions are Approximate, Actual May Vary.



**Joey Hoiescu**  
619-806-7014  
joey@luxdenver.com  
<https://www.thepropertysomm.com>

