



 Single Family
  3762 SQFT
  5 Beds
  3/1 Baths
  3 Car
  0.2 Acre

PROPERTY DETAILS

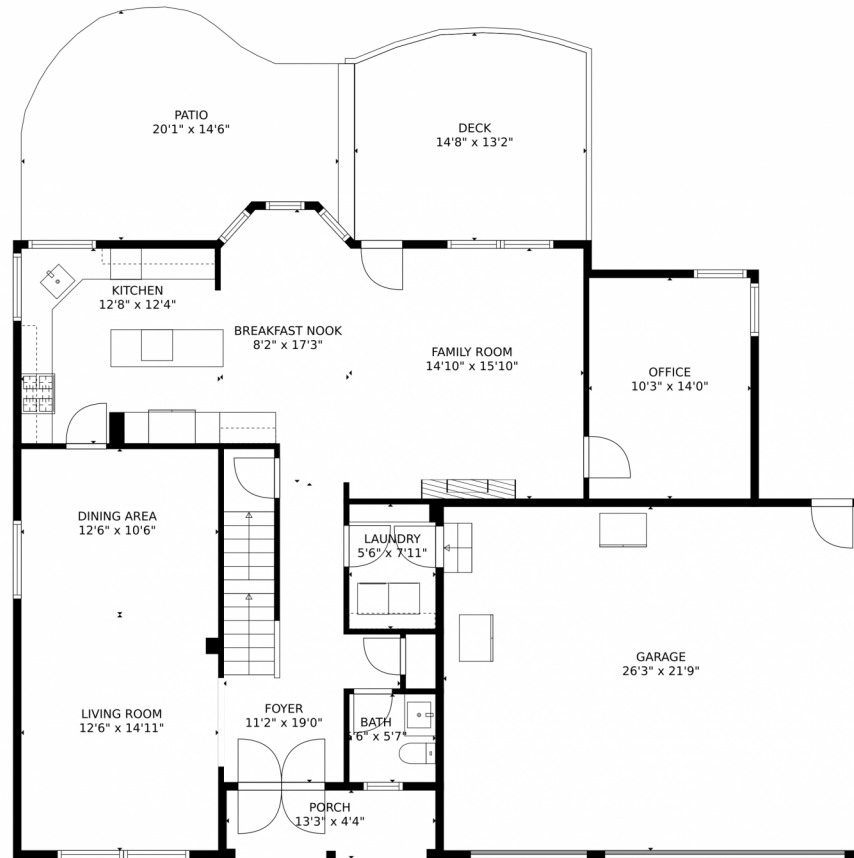
Beautiful, ONE OWNER home in Parker that is truly TURN-KEY and ready for the next owner to create their memories! Homes like this don't come on the market often – This wonderful home is carefully maintained! With 3,762 square feet, 5-bedrooms and 4-bathrooms, this home offers a beautifully updated kitchen completed in 2018. This newer kitchen has quartz countertops/island, a 36 inch Thermador gas range with 4 burners and griddle, a built in Sharp microwave drawer with flip down control panel, a Bosch dishwasher and a JennAir cabinet depth refrigerator, all stainless steel. The main floor boasts a formal living room with vaulted ceiling, separate dining room, family room with gas fireplace, updated laundry room, and dedicated office. Upstairs you'll find a dedicated primary bedroom with an updated en suite full bathroom, 3 additional bedrooms and an additional updated full bathroom (1 bedroom is currently being used as a 2nd office and has a walk in closet). The full upstairs bathroom has dual sinks, marble slab tile counters and a marble tile shower and floor. The finished basement has another bedroom with a ¾ bathroom, cozy gas fireplace in the media room open to a wet bar with refrigerator, a game nook area, a 100+ bottle wine room, and a crawl space and under stair closet for extra storage. Plantation shutters throughout the entire main/upper levels, hardwood floors, and a beautifully updated staircase in the entry are just a few of the upgrades in this amazing home. Enjoy the summer evenings on the Fiberon back deck (new in 2021 with programmable/dimmable lights). The elegant, stamped concrete patio is newly resealed and the backyard is fully fenced and landscaped. Don't forget the 3 CAR GARAGE! Walking distance to downtown Parker, Parker Library, Parker Cultural Arts Complex, seasonal weekend farmers market, O'Brien pool, restaurants, the famous Parker Days. Easy commute to DIA, DTC, Meridian, and I-25 corridor. This amazing home has so many things to offer!



Tamara Thiess
 720-318-7146
 tamarathiess@gmail.com
<https://www.tamarathiess.kw.com>



20348 Vista Circle, Parker, CO 80138 – Main Level



GROSS INTERNAL AREA
Below Ground: 877 sq. ft, FLOOR 2: 1254 sq. ft, FLOOR 3: 1201 sq. ft
EXCLUDED AREAS: ELECTRICAL ROOM: 55 sq. ft, GARAGE: 579 sq. ft, PORCH: 57 sq. ft,
DECK: 185 sq. ft, PATIO: 251 sq. ft, OPEN TO BELOW: 66 sq. ft
TOTAL: 3332 sq. ft
MEASUREMENTS CALCULATED BY V1Photos.com ARE DEEMED HIGHLY RELIABLE BUT NOT GUARANTEED.



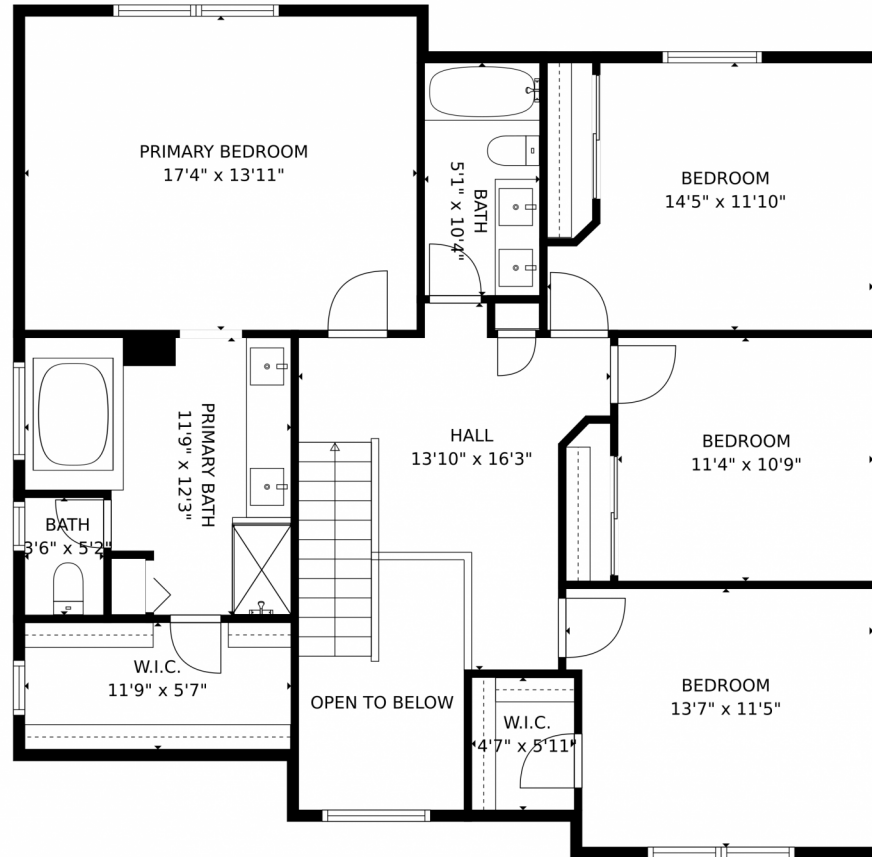
Disclaimer: Sizes and Dimensions are Approximate, Actual May Vary.



Tamara Thiess
720-318-7146
tamarathiess@gmail.com
<https://www.tamarathiess.kw.com>



20348 Vista Circle, Parker, CO 80138 – Second Level



GROSS INTERNAL AREA
Below Ground: 877 sq. ft, FLOOR 2: 1254 sq. ft, FLOOR 3: 1201 sq. ft
EXCLUDED AREAS: ELECTRICAL ROOM: 55 sq. ft, GARAGE: 579 sq. ft, PORCH: 57 sq. ft,
DECK: 185 sq. ft, PATIO: 251 sq. ft, OPEN TO BELOW: 66 sq. ft
TOTAL: 3332 sq. ft
MEASUREMENTS CALCULATED BY V1Photos.com ARE DEEMED HIGHLY RELIABLE BUT NOT GUARANTEED.

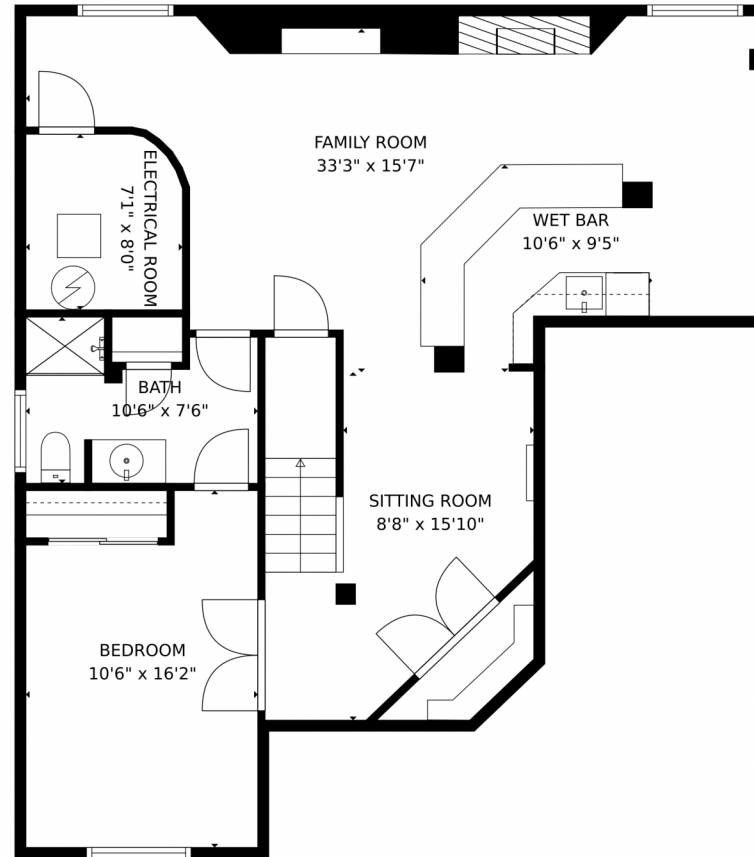


Disclaimer: Sizes and Dimensions are Approximate, Actual May Vary.



Tamara Thiess
720-318-7146
tamarathiess@gmail.com
<https://www.tamarathiess.kw.com>





GROSS INTERNAL AREA
Below Ground: 877 sq. ft, FLOOR 2: 1254 sq. ft, FLOOR 3: 1201 sq. ft
EXCLUDED AREAS: ELECTRICAL ROOM: 55 sq. ft, GARAGE: 579 sq. ft, PORCH: 57 sq. ft,
DECK: 185 sq. ft, PATIO: 251 sq. ft, OPEN TO BELOW: 66 sq. ft
TOTAL: 3332 sq. ft
MEASUREMENTS CALCULATED BY V1Photos.com ARE DEEMED HIGHLY RELIABLE BUT NOT GUARANTEED.



Disclaimer: Sizes and Dimensions are Approximate, Actual May Vary.



Tamara Thiess
720-318-7146
tamarathiess@gmail.com
<https://www.tamarathiess.kw.com>



20348 Vista Circle, Parker, CO 80138 – All Levels



GROSS INTERNAL AREA
Below Ground: 877 sq. ft, FLOOR 2: 1254 sq. ft, FLOOR 3: 1201 sq. ft
EXCLUDED AREAS: ELECTRICAL ROOM: 55 sq. ft, GARAGE: 579 sq. ft, PORCH: 57 sq. ft,
DECK: 185 sq. ft, PATIO: 251 sq. ft, OPEN TO BELOW: 66 sq. ft
TOTAL: 3332 sq. ft
MEASUREMENTS CALCULATED BY V1Photos.com ARE DEEMED HIGHLY RELIABLE BUT NOT GUARANTEED.



Disclaimer: Sizes and Dimensions are Approximate, Actual May Vary.



Tamara Thiess
720-318-7146
tamarathiess@gmail.com
<https://www.tamarathiess.kw.com>



Scan code
for more
property
details

