



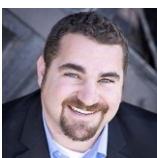
 Single Family

 2900 SQFT

 5 Beds

 3 Baths

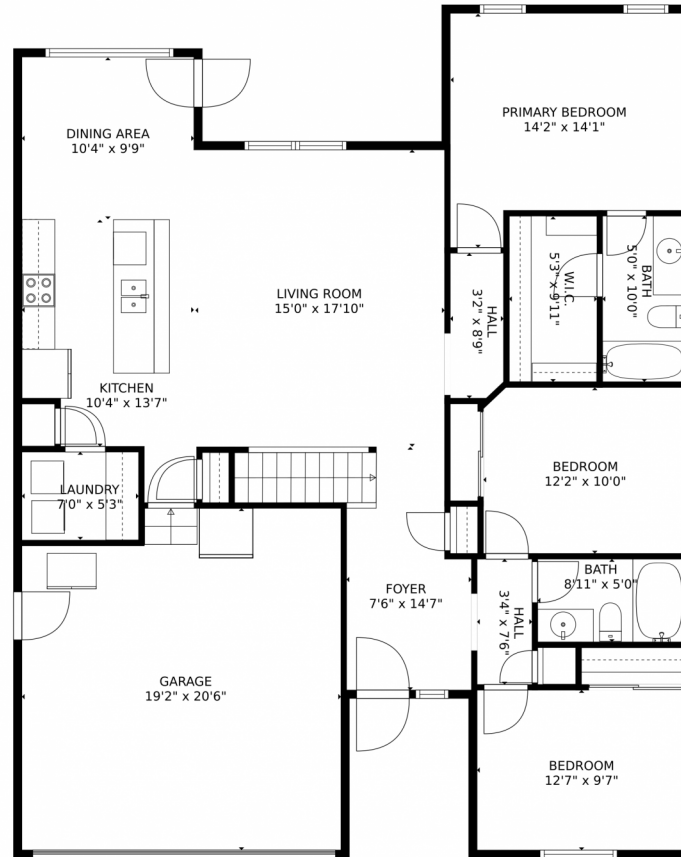
 2 Car



Brad Inhulsen
970-584-4144
brad@searsrealestate.com



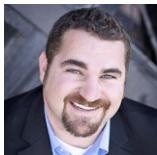
2241 75th Avenue, Greeley, CO 80634 – Main Floor



GROSS INTERNAL AREA
Below Ground: 1049 sq. ft, FLOOR 2: 1386 sq. ft
EXCLUDED AREAS: ELECTRICAL ROOM: 69 sq. ft, STORAGE: 92 sq. ft, GARAGE: 377 sq. ft
TOTAL: 2435 sq. ft
MEASUREMENTS CALCULATED BY V1Photos.com ARE DEEMED HIGHLY RELIABLE BUT NOT GUARANTEED.

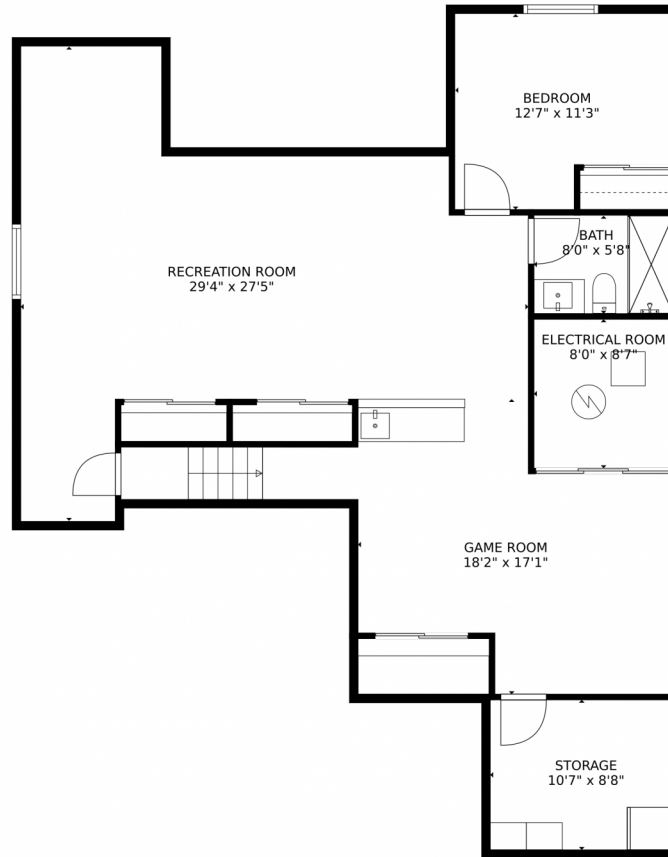


Disclaimer: Sizes and Dimensions are Approximate, Actual May Vary.



Brad Inhulsen
970-584-4144
brad@searsrealestate.com





GROSS INTERNAL AREA
Below Ground: 1049 sq. ft, FLOOR 2: 1386 sq. ft
EXCLUDED AREAS: ELECTRICAL ROOM: 69 sq. ft, STORAGE: 92 sq. ft, GARAGE: 377 sq. ft
TOTAL: 2435 sq. ft
MEASUREMENTS CALCULATED BY V1Photos.com ARE DEEMED HIGHLY RELIABLE BUT NOT GUARANTEED.



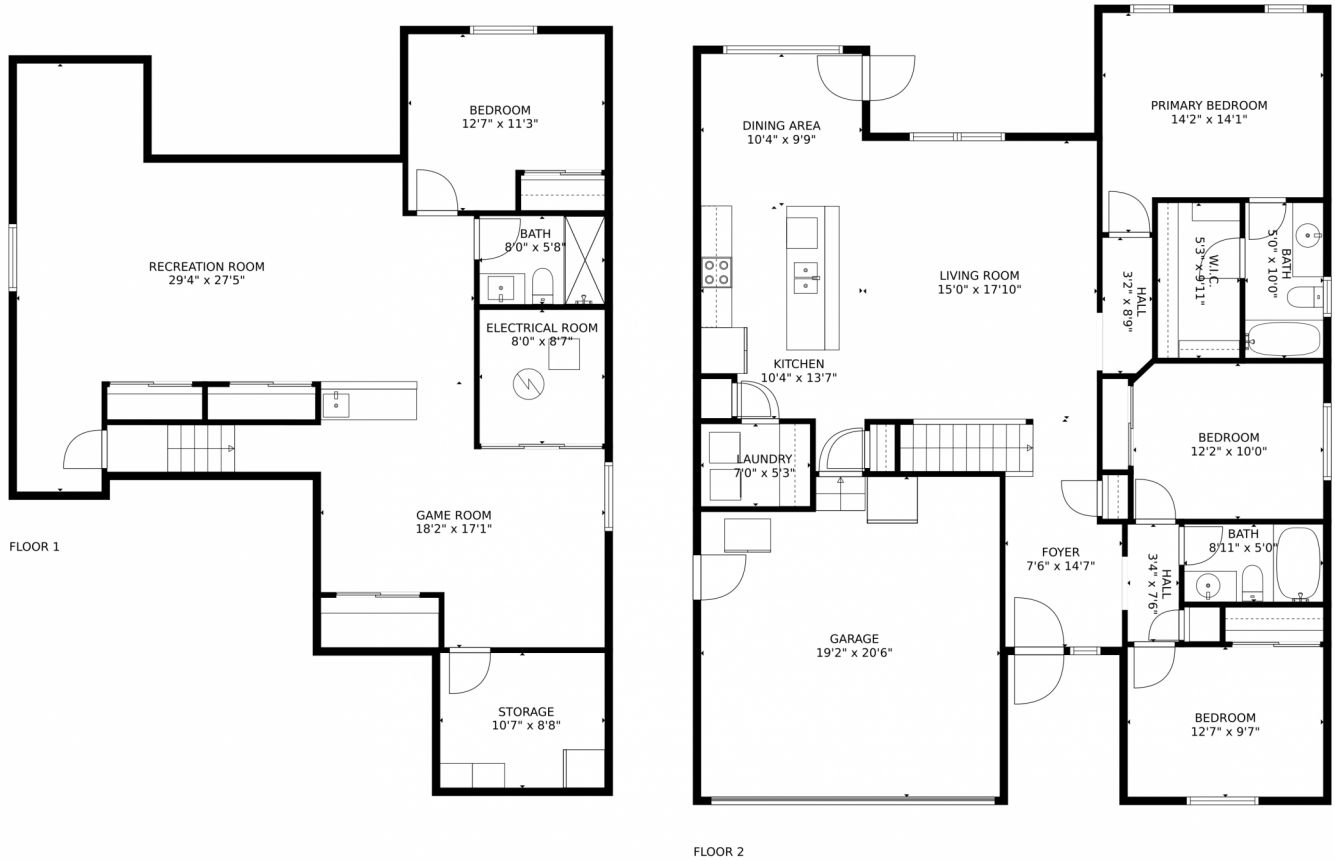
Disclaimer: Sizes and Dimensions are Approximate, Actual May Vary.



Brad Inhulsen
970-584-4144
brad@searsrealestate.com



2241 75th Avenue, Greeley, CO 80634 – All Floors



GROSS INTERNAL AREA
 Below Ground: 1049 sq. ft, FLOOR 2: 1386 sq. ft
 EXCLUDED AREAS: ELECTRICAL ROOM: 69 sq. ft, STORAGE: 92 sq. ft, GARAGE: 377 sq. ft
 TOTAL: 2435 sq. ft
 MEASUREMENTS CALCULATED BY V1Photos.COM ARE DEEMED HIGHLY RELIABLE BUT NOT GUARANTEED.



Disclaimer: Sizes and Dimensions are Approximate, Actual May Vary.



Brad Inhulsen
 970-584-4144
 brad@searsrealestate.com

