



2375 Fiji Drive
Castle Rock, CO 80109



Single Family



1793 SQFT



Robert Lembke
303-829-6181
rglembke@aol.com



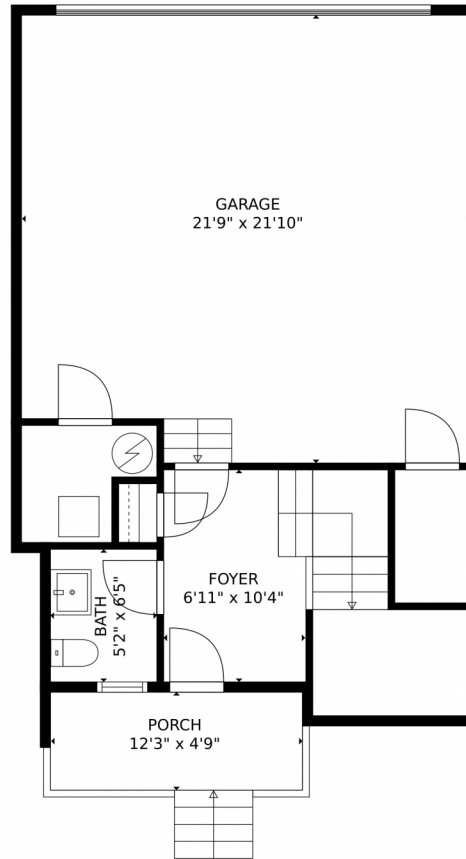
Heather Lembke Healy
303-880-4116
hlembke11@gmail.com



Scan code
for more
property
details



2375 Fiji Drive, Castle Rock, CO 80109 – Lower Level



GROSS INTERNAL AREA
FLOOR 1: 209 sq. ft, FLOOR 2: 641 sq. ft, Below Ground: 709 sq. ft, FLOOR 4: 119 sq. ft
EXCLUDED AREAS: UNDEFINED: 31 sq. ft, GARAGE: 461 sq. ft, PORCH: 58 sq. ft,
BALCONY: 64 sq. ft, TERRACE: 367 sq. ft
TOTAL: 1678 sq. ft
MEASUREMENTS CALCULATED BY V1Photos.COM ARE DEEMED HIGHLY RELIABLE BUT NOT GUARANTEED.



Disclaimer: Sizes and Dimensions are Approximate, Actual May Vary.



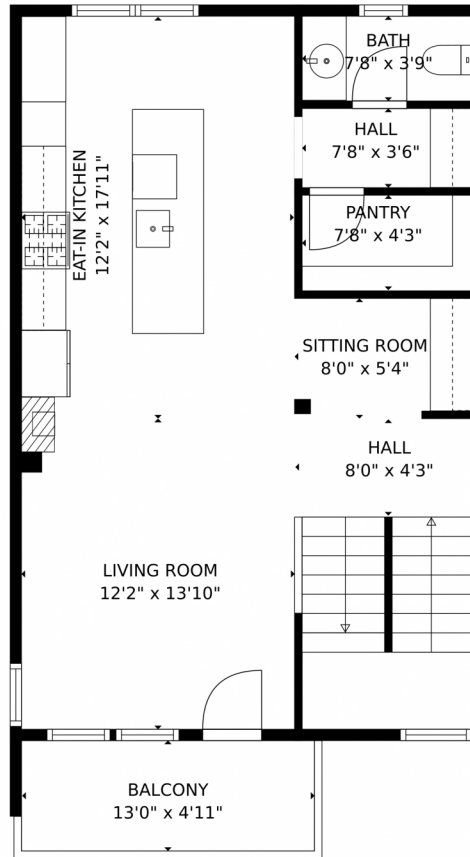
Robert Lembke
303-829-6181
rglembke@aol.com



Heather Lembke Healy
303-880-4116
hlembke11@gmail.com



2375 Fiji Drive, Castle Rock, CO 80109 – Main Level



GROSS INTERNAL AREA
FLOOR 1: 209 sq. ft, FLOOR 2: 641 sq. ft, Below Ground: 709 sq. ft, FLOOR 4: 119 sq. ft
EXCLUDED AREAS: UNDEFINED: 31 sq. ft, GARAGE: 461 sq. ft, PORCH: 58 sq. ft,
BALCONY: 64 sq. ft, TERRACE: 367 sq. ft
TOTAL: 1678 sq. ft
MEASUREMENTS CALCULATED BY V1Photos.COM ARE DEEMED HIGHLY RELIABLE BUT NOT GUARANTEED.



Disclaimer: Sizes and Dimensions are Approximate, Actual May Vary.



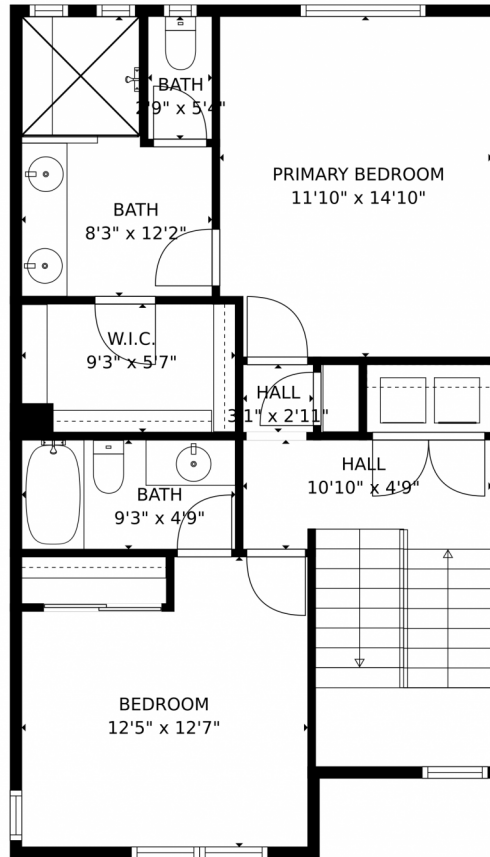
Robert Lembke
303-829-6181
rglembke@aol.com



Heather Lembke Healy
303-880-4116
hlembke11@gmail.com



2375 Fiji Drive, Castle Rock, CO 80109 – Upper Level



GROSS INTERNAL AREA
FLOOR 1: 209 sq. ft, FLOOR 2: 641 sq. ft, Below Ground: 709 sq. ft, FLOOR 4: 119 sq. ft
EXCLUDED AREAS: UNDEFINED: 31 sq. ft, GARAGE: 461 sq. ft, PORCH: 58 sq. ft,
BALCONY: 64 sq. ft, TERRACE: 367 sq. ft
TOTAL: 1678 sq. ft
MEASUREMENTS CALCULATED BY V1Photos.COM ARE DEEMED HIGHLY RELIABLE BUT NOT GUARANTEED.



Disclaimer: Sizes and Dimensions are Approximate, Actual May Vary.

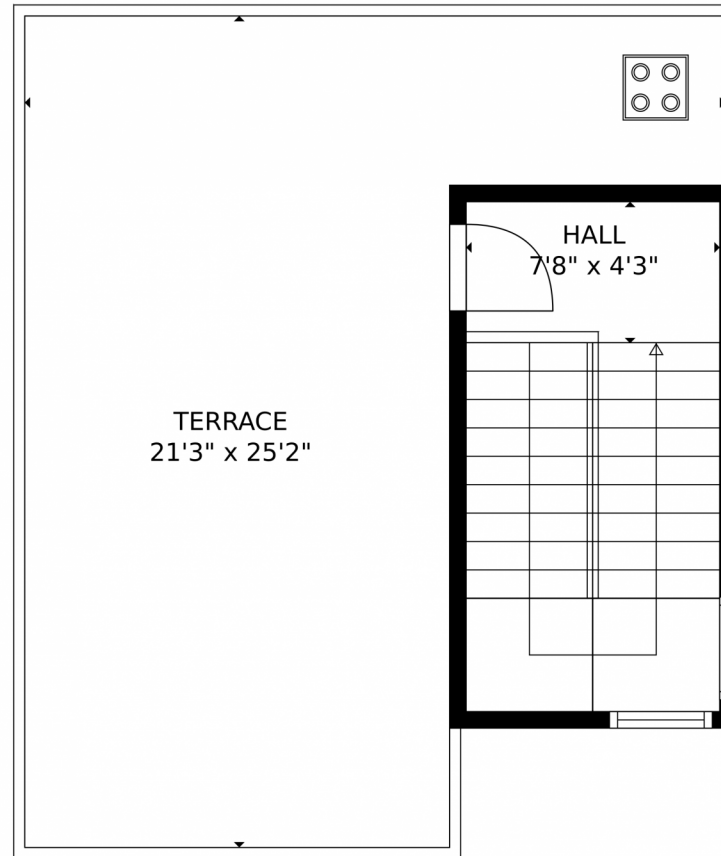


Robert Lembke
303-829-6181
rglembke@aol.com



Heather Lembke Healy
303-880-4116
hlembke11@gmail.com





GROSS INTERNAL AREA
FLOOR 1: 209 sq. ft, FLOOR 2: 641 sq. ft, Below Ground: 709 sq. ft, FLOOR 4: 119 sq. ft
EXCLUDED AREAS: UNDEFINED: 31 sq. ft, GARAGE: 461 sq. ft, PORCH: 58 sq. ft,
BALCONY: 64 sq. ft, TERRACE: 367 sq. ft
TOTAL: 1678 sq. ft
MEASUREMENTS CALCULATED BY V1Photos.com ARE DEEMED HIGHLY RELIABLE BUT NOT GUARANTEED.



Disclaimer: Sizes and Dimensions are Approximate, Actual May Vary.



Robert Lembke
303-829-6181
rglembke@aol.com



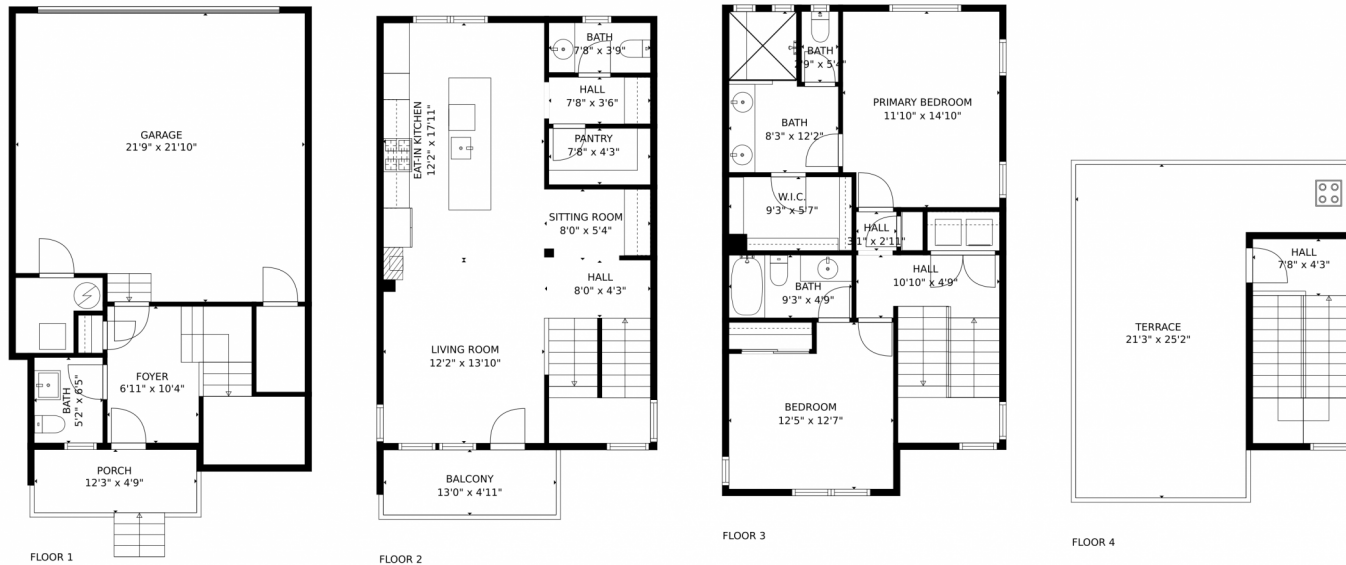
Heather Lembke Healy
303-880-4116
hlembke11@gmail.com



Scan code
for more
property
details



2375 Fiji Drive, Castle Rock, CO 80109 – All Levels



GROSS INTERNAL AREA
 FLOOR 1: 209 sq. ft, FLOOR 2: 641 sq. ft, Below Ground: 709 sq. ft, FLOOR 4: 119 sq. ft
 EXCLUDED AREAS: UNDEFINED: 31 sq. ft, GARAGE: 461 sq. ft, PORCH: 58 sq. ft,
 BALCONY: 64 sq. ft, TERRACE: 367 sq. ft
 TOTAL: 1678 sq. ft
 MEASUREMENTS CALCULATED BY V1Photos.COM ARE DEEMED HIGHLY RELIABLE BUT NOT GUARANTEED.



Disclaimer: Sizes and Dimensions are Approximate, Actual May Vary.



Robert Lembke
 303-829-6181
 rg lembke@aol.com



Heather Lembke Healy
 303-880-4116
 h lembke11@gmail.com

