




16580 East Virginia Avenue, Aurora, CO 80017 - Main Level



 Single Family

 1860 SQFT

 3 Beds

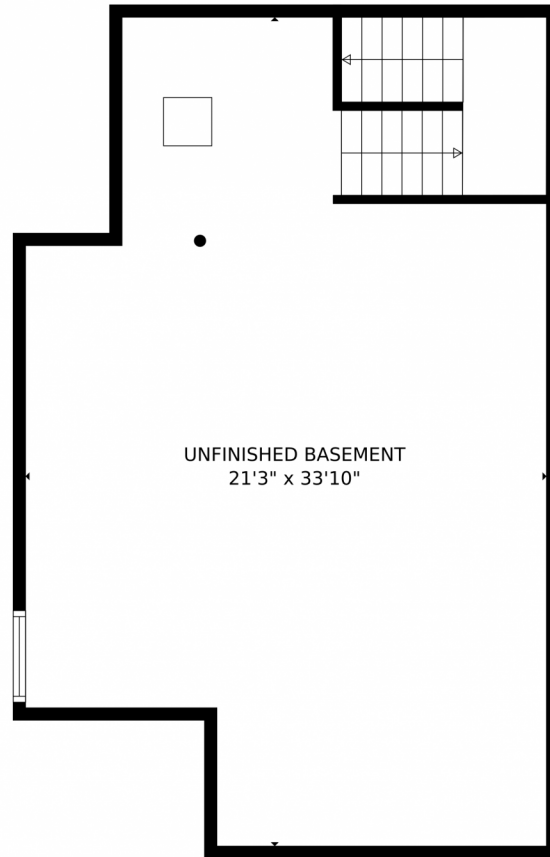
 3 Baths



Taylor Haas
 303-665-7368
 taylorh@coloradorpm.com
<https://www.coloradorpm.com/available-rental-properties-denver>



16580 East Virginia Avenue, Aurora, CO 80017 – Lower Level



GROSS INTERNAL AREA
Below Ground: 0 sq. ft, FLOOR 2: 717 sq. ft, FLOOR 3: 957 sq. ft
EXCLUDED AREAS: UNFINISHED BASEMENT: 638 sq. ft, GARAGE: 399 sq. ft, PATIO: 243 sq. ft,
PORCH: 39 sq. ft
TOTAL: 1674 sq. ft
MEASUREMENTS CALCULATED BY V1Photos.COM ARE DEEMED HIGHLY RELIABLE BUT NOT GUARANTEED.



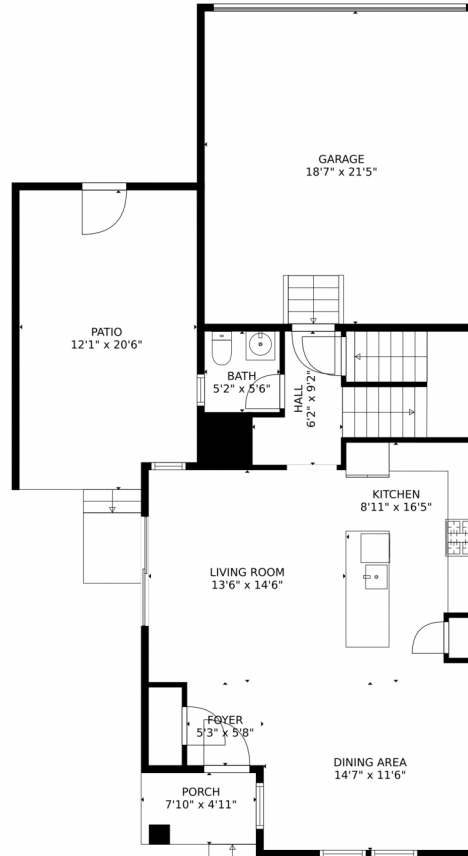
Disclaimer: Sizes and Dimensions are Approximate, Actual May Vary.



Taylor Haas
303-665-7368
taylorh@coloradorpm.com
<https://www.coloradorpm.com/available-rental-properties-denver>



16580 East Virginia Avenue, Aurora, CO 80017 – Main Level



GROSS INTERNAL AREA
Below Ground: 0 sq. ft, FLOOR 2: 717 sq. ft, FLOOR 3: 957 sq. ft
EXCLUDED AREAS: UNFINISHED BASEMENT: 638 sq. ft, GARAGE: 399 sq. ft, PATIO: 243 sq. ft,
PORCH: 39 sq. ft
TOTAL: 1674 sq. ft
MEASUREMENTS CALCULATED BY V1Photos.com ARE DEEMED HIGHLY RELIABLE BUT NOT GUARANTEED.



Disclaimer: Sizes and Dimensions are Approximate, Actual May Vary.



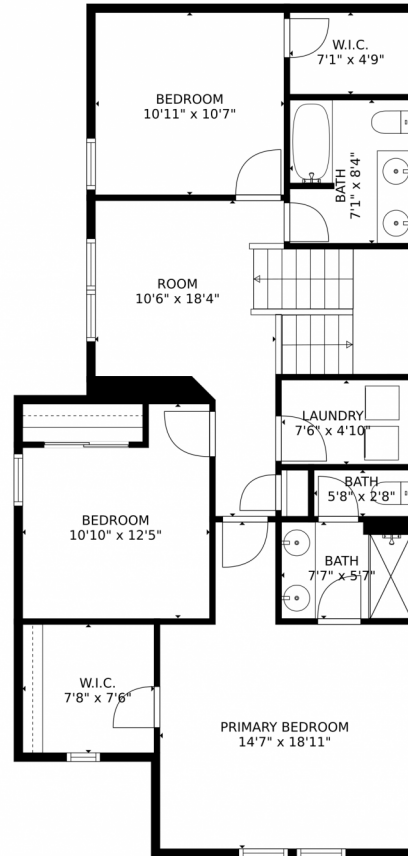
Taylor Haas
303-665-7368
taylorh@coloradorpm.com
<https://www.coloradorpm.com/available-rental-properties-denver>



Scan code
for more
property
details



16580 East Virginia Avenue, Aurora, CO 80017 – Upper Level



GROSS INTERNAL AREA
Below Ground: 0 sq. ft, FLOOR 2: 717 sq. ft, FLOOR 3: 957 sq. ft
EXCLUDED AREAS: UNFINISHED BASEMENT: 638 sq. ft, GARAGE: 399 sq. ft, PATIO: 243 sq. ft,
PORCH: 39 sq. ft
TOTAL: 1674 sq. ft
MEASUREMENTS CALCULATED BY V1Photos.com ARE DEEMED HIGHLY RELIABLE BUT NOT GUARANTEED.



Disclaimer: Sizes and Dimensions are Approximate, Actual May Vary.



Taylor Haas
303-665-7368
taylorh@coloradorpm.com
<https://www.coloradorpm.com/available-rental-properties-denver>



Scan code
for more
property
details



16580 East Virginia Avenue, Aurora, CO 80017 – All Levels



GROSS INTERNAL AREA
Below Ground: 0 sq. ft, FLOOR 2: 717 sq. ft, FLOOR 3: 957 sq. ft
EXCLUDED AREAS: UNFINISHED BASEMENT: 638 sq. ft, GARAGE: 399 sq. ft, PATIO: 243 sq. ft,
PORCH: 39 sq. ft
TOTAL: 1674 sq. ft
MEASUREMENTS CALCULATED BY V1Photos.com ARE DEEMED HIGHLY RELIABLE BUT NOT GUARANTEED.



Disclaimer: Sizes and Dimensions are Approximate, Actual May Vary.



Taylor Haas
303-665-7368
taylorh@coloradorpm.com
<https://www.coloradorpm.com/available-rental-properties-denver>



Scan code
for more
property
details

