

 Single Family

 2500 SQFT

 5 Beds

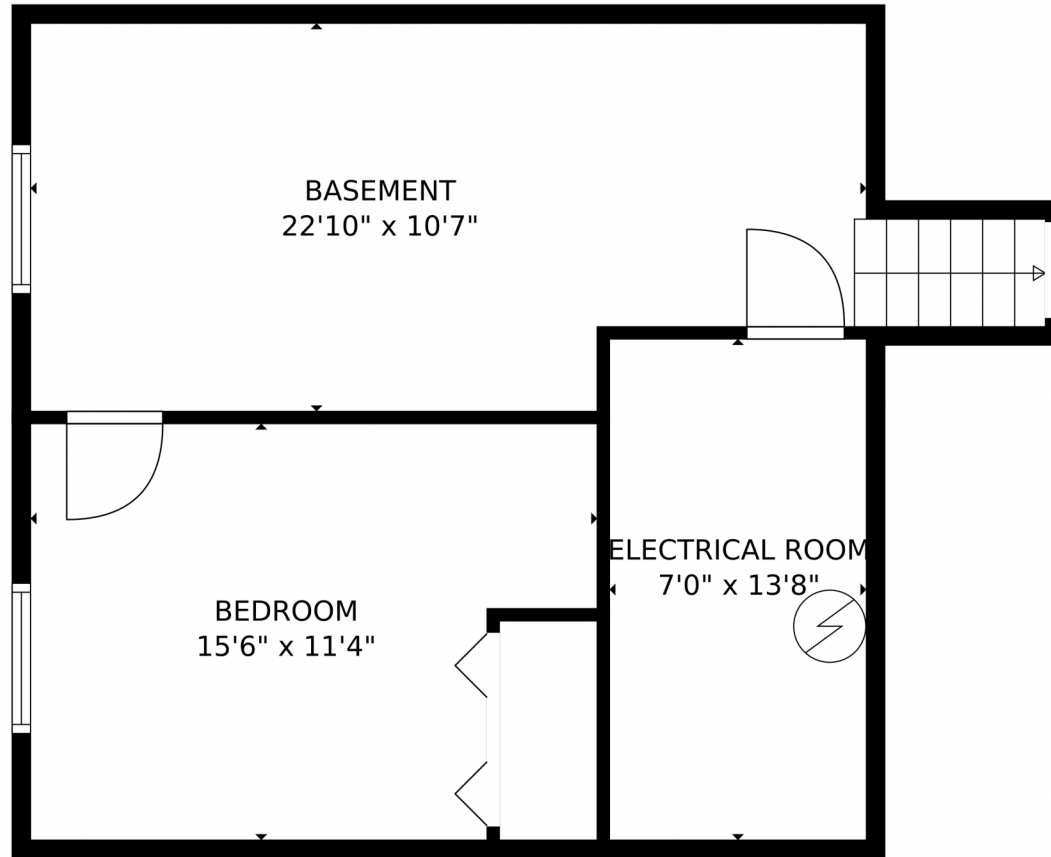
 3 Baths

 2 Car



**Jordan Kermes**  
952-956-2958  
jordan@kermesllc.com





GROSS INTERNAL AREA  
Below Ground: 427 sq. ft, Below Ground: 545 sq. ft, FLOOR 3: 575 sq. ft, FLOOR 4: 621 sq. ft  
EXCLUDED AREAS: ELECTRICAL ROOM: 96 sq. ft, GARAGE: 452 sq. ft, PORCH: 208 sq. ft,  
PATIO: 234 sq. ft  
TOTAL: 2168 sq. ft  
MEASUREMENTS CALCULATED BY V1Photos.com ARE DEEMED HIGHLY RELIABLE BUT NOT GUARANTEED.

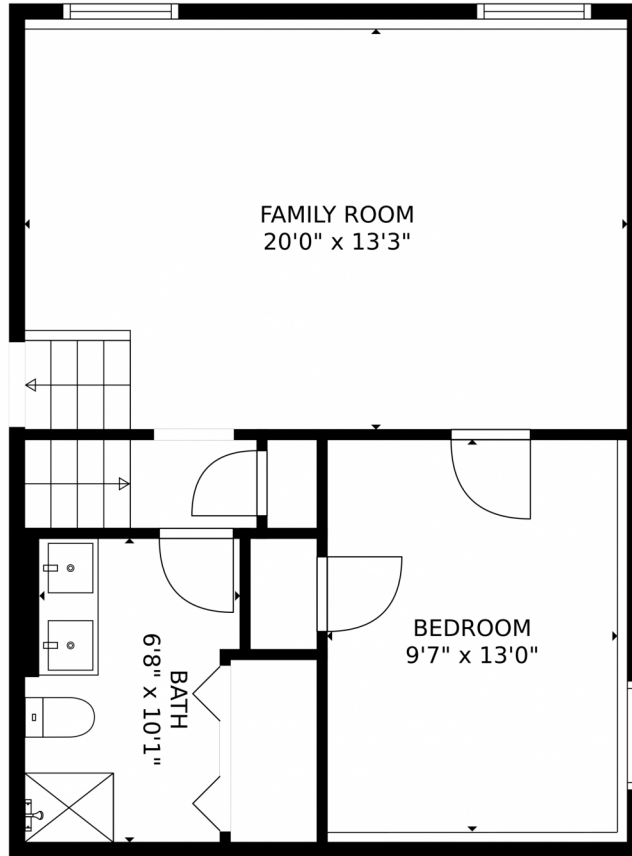


Disclaimer: Sizes and Dimensions are Approximate, Actual May Vary.



**Jordan Kermes**  
952-956-2958  
jordan@kermesllc.com





GROSS INTERNAL AREA  
Below Ground: 427 sq. ft, Below Ground: 545 sq. ft, FLOOR 3: 575 sq. ft, FLOOR 4: 621 sq. ft  
EXCLUDED AREAS: ELECTRICAL ROOM: 96 sq. ft, GARAGE: 452 sq. ft, PORCH: 208 sq. ft,  
PATIO: 234 sq. ft  
TOTAL: 2168 sq. ft  
MEASUREMENTS CALCULATED BY V1Photos.com ARE DEEMED HIGHLY RELIABLE BUT NOT GUARANTEED.

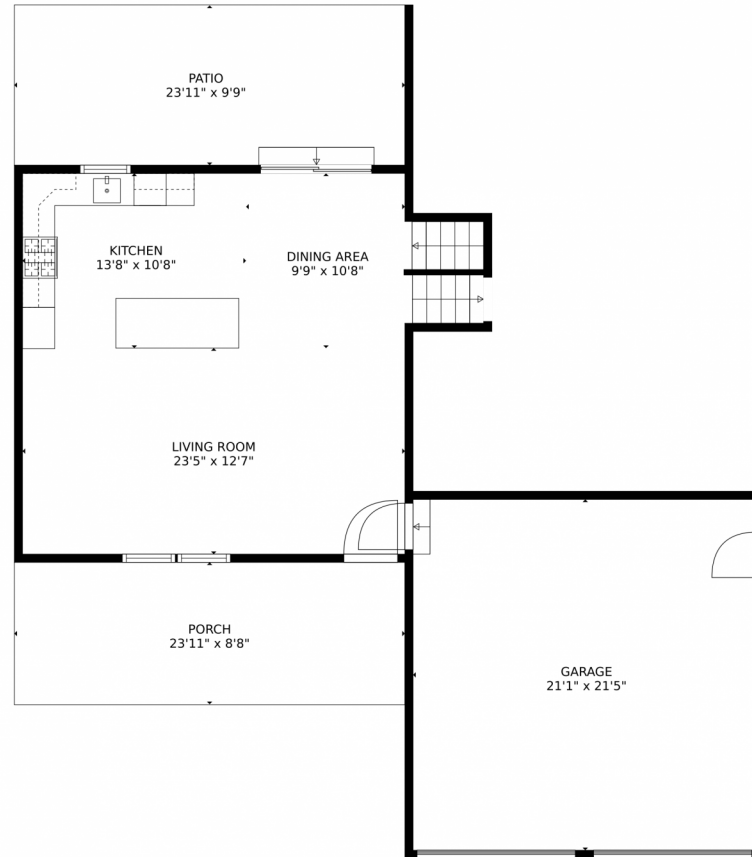


Disclaimer: Sizes and Dimensions are Approximate, Actual May Vary.



**Jordan Kermes**  
952-956-2958  
jordan@kermesllc.com





GROSS INTERNAL AREA  
Below Ground: 427 sq. ft, Below Ground: 545 sq. ft, FLOOR 3: 575 sq. ft, FLOOR 4: 621 sq. ft  
EXCLUDED AREAS: ELECTRICAL ROOM: 96 sq. ft, GARAGE: 452 sq. ft, PORCH: 208 sq. ft,  
PATIO: 234 sq. ft  
TOTAL: 2168 sq. ft  
MEASUREMENTS CALCULATED BY V1Photos.COM ARE DEEMED HIGHLY RELIABLE BUT NOT GUARANTEED.

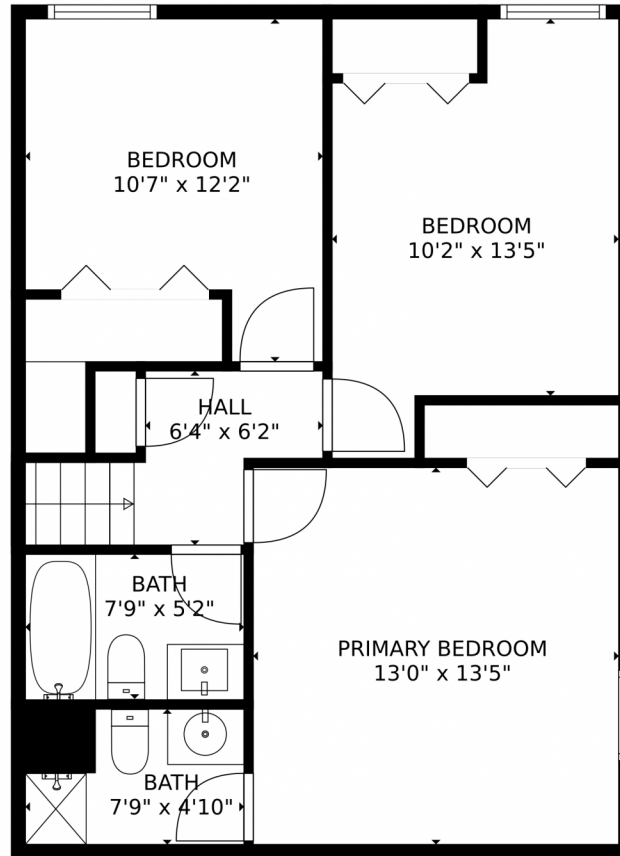


Disclaimer: Sizes and Dimensions are Approximate, Actual May Vary.



**Jordan Kermes**  
952-956-2958  
jordan@kermesllc.com





GROSS INTERNAL AREA  
Below Ground: 427 sq. ft, Below Ground: 545 sq. ft, FLOOR 3: 575 sq. ft, FLOOR 4: 621 sq. ft  
EXCLUDED AREAS: ELECTRICAL ROOM: 96 sq. ft, GARAGE: 452 sq. ft, PORCH: 208 sq. ft,  
PATIO: 234 sq. ft  
TOTAL: 2168 sq. ft  
MEASUREMENTS CALCULATED BY V1Photos.com ARE DEEMED HIGHLY RELIABLE BUT NOT GUARANTEED.



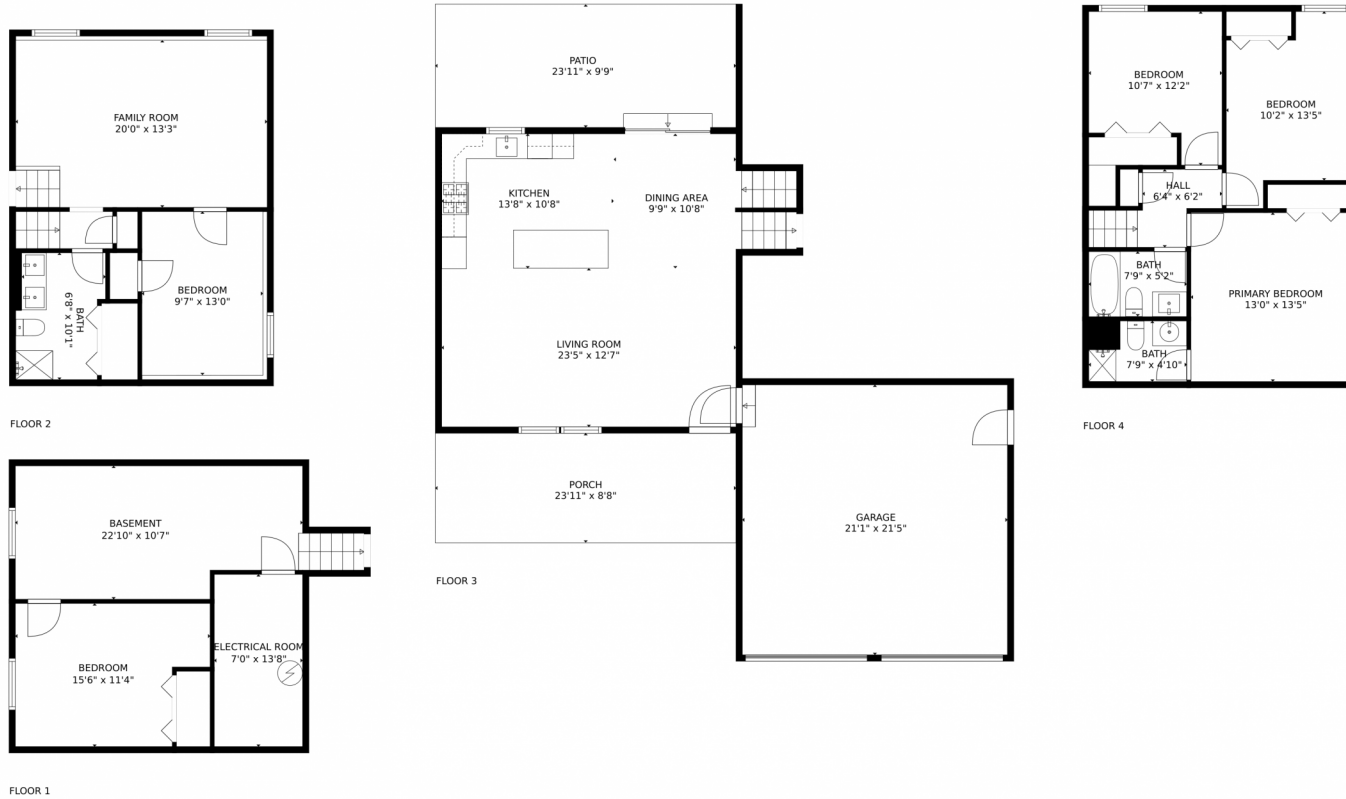
Disclaimer: Sizes and Dimensions are Approximate, Actual May Vary.



**Jordan Kermes**  
952-956-2958  
jordan@kermesllc.com



# 141 Kingsley Ave, Pueblo, CO 81005 – All Levels



GROSS INTERNAL AREA  
Below Ground: 427 sq. ft, Below Ground: 545 sq. ft, FLOOR 3: 575 sq. ft, FLOOR 4: 621 sq. ft  
EXCLUDED AREAS: ELECTRICAL ROOM: 96 sq. ft, GARAGE: 452 sq. ft, PORCH: 208 sq. ft,  
PATIO: 234 sq. ft  
TOTAL: 2168 sq. ft  
MEASUREMENTS CALCULATED BY V1Photos.COM ARE DEEMED HIGHLY RELIABLE BUT NOT GUARANTEED.



Disclaimer: Sizes and Dimensions are Approximate, Actual May Vary.



**Jordan Kermes**  
952-956-2958  
jordan@kermesllc.com



Scan code  
for more  
property  
details

