



Single Family



3581 SQFT



5 Beds



2/1 Baths



2 Car



0.44 Acre

PROPERTY DETAILS

OPEN HOUSE SAT 11-2 & SUN 11-1! Welcome to your dream home! This spacious 3581 square foot abode is the perfect combination of modern comforts and natural beauty. From open beams, rich woods and stonework, this luxurious property offers plenty of room to live, work, play, and entertain in style. The almost half acre lot has RV parking on the side of the home as well as abundant guest parking. Inside you'll find an open floor plan with creative workspaces that allow you to make the most out of each day. There are 5 bedrooms and 3 bathrooms throughout the house plus the possibility for a future full apartment in the lower level with interior and exterior entrances - ideal for multi-generational living or guests from out of town. This stunning property has had several recent updates including new Mini Splits system for climate control; new insulation in the attic; new high efficiency furnace; radon mitigation system; new water heater; concrete; gutters...and so much more! Outside there's plenty of opportunity to host huge gatherings or simply dine al fresco under stars - making it perfect for entertaining friends and family alike! And if you need even more adventure - Green Mountain & its mountain biking/running trails are only moments away - not to mention proximity to Federal Center, St Anthony's Hospital & easy access into downtown Denver or ski country. Don't miss this one-of-a-kind opportunity - call now before it's gone!



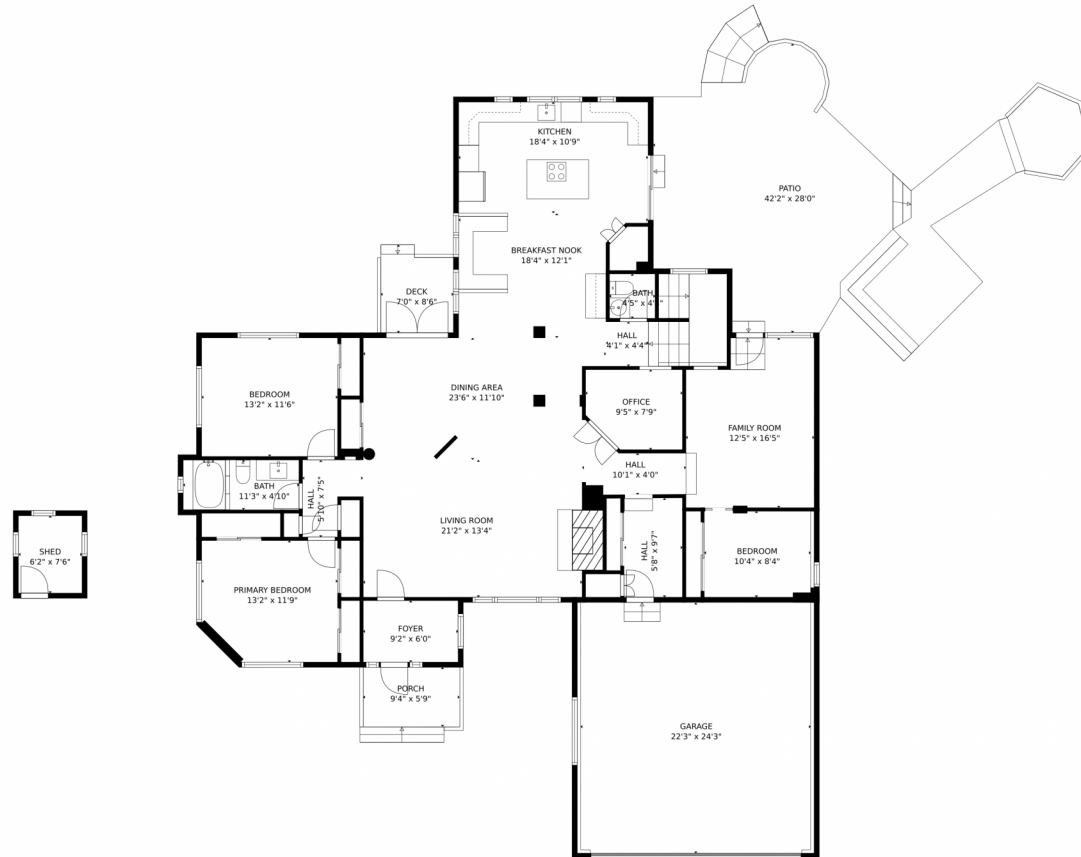
Alexis Foster
970-310-6999
alexisfoster@windermere.com



Scan code
for more
property
details



11510 W Center Avenue, Lakewood, CO 80226 – Main Level



GROSS INTERNAL AREA
Below Ground: 1124 sq. ft, FLOOR 2: 2115 sq. ft
EXCLUDED AREAS: UTILITY: 87 sq. ft, SHED: 46 sq. ft, GARAGE: 558 sq. ft,
DECK: 55 sq. ft, PORCH: 54 sq. ft, PATIO: 698 sq. ft
TOTAL: 3239 sq. ft
MEASUREMENTS CALCULATED BY V1Photos.COM ARE DEEMED HIGHLY RELIABLE BUT NOT GUARANTEED.



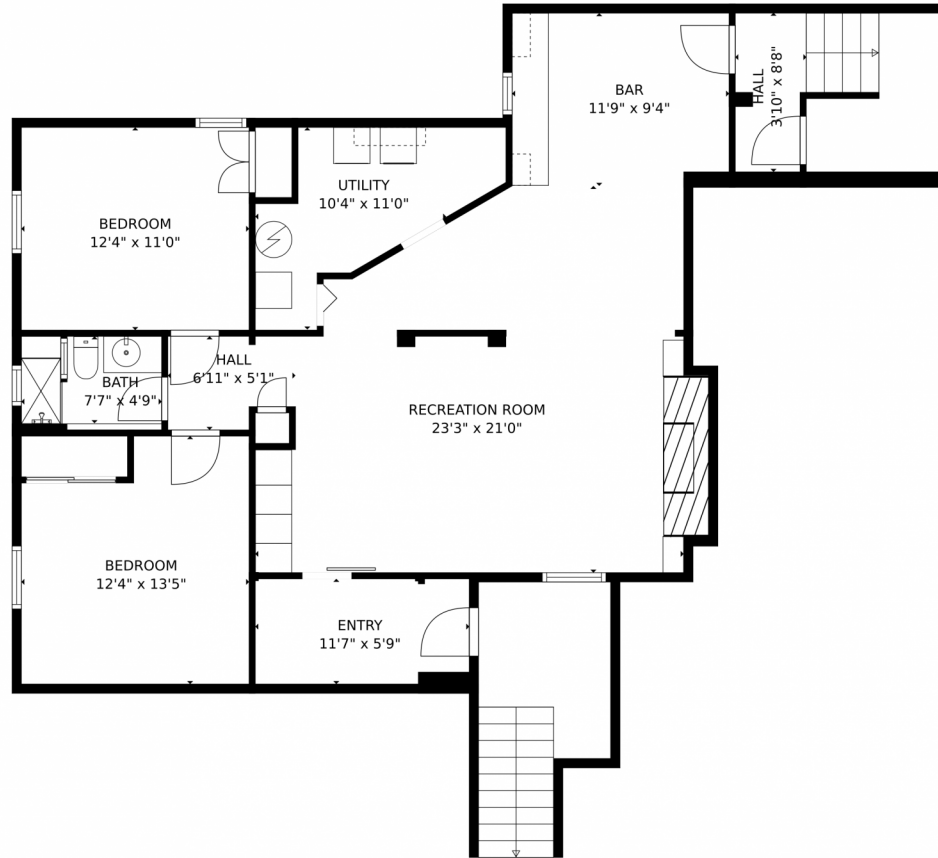
Disclaimer: Sizes and Dimensions are Approximate, Actual May Vary.



Alexis Foster
970-310-6999
alexisfoster@windermere.com



11510 W Center Avenue, Lakewood, CO 80226 – Basement



GROSS INTERNAL AREA
Below Ground: 1124 sq. ft. FLOOR 2: 2115 sq. ft.
EXCLUDED AREAS: UTILITY: 87 sq. ft. SHED: 46 sq. ft. GARAGE: 558 sq. ft.
DECK: 55 sq. ft. PORCH: 54 sq. ft. PATIO: 698 sq. ft.
TOTAL: 3239 sq. ft.
MEASUREMENTS CALCULATED BY V1Photos.com ARE DEEMED HIGHLY RELIABLE BUT NOT GUARANTEED.



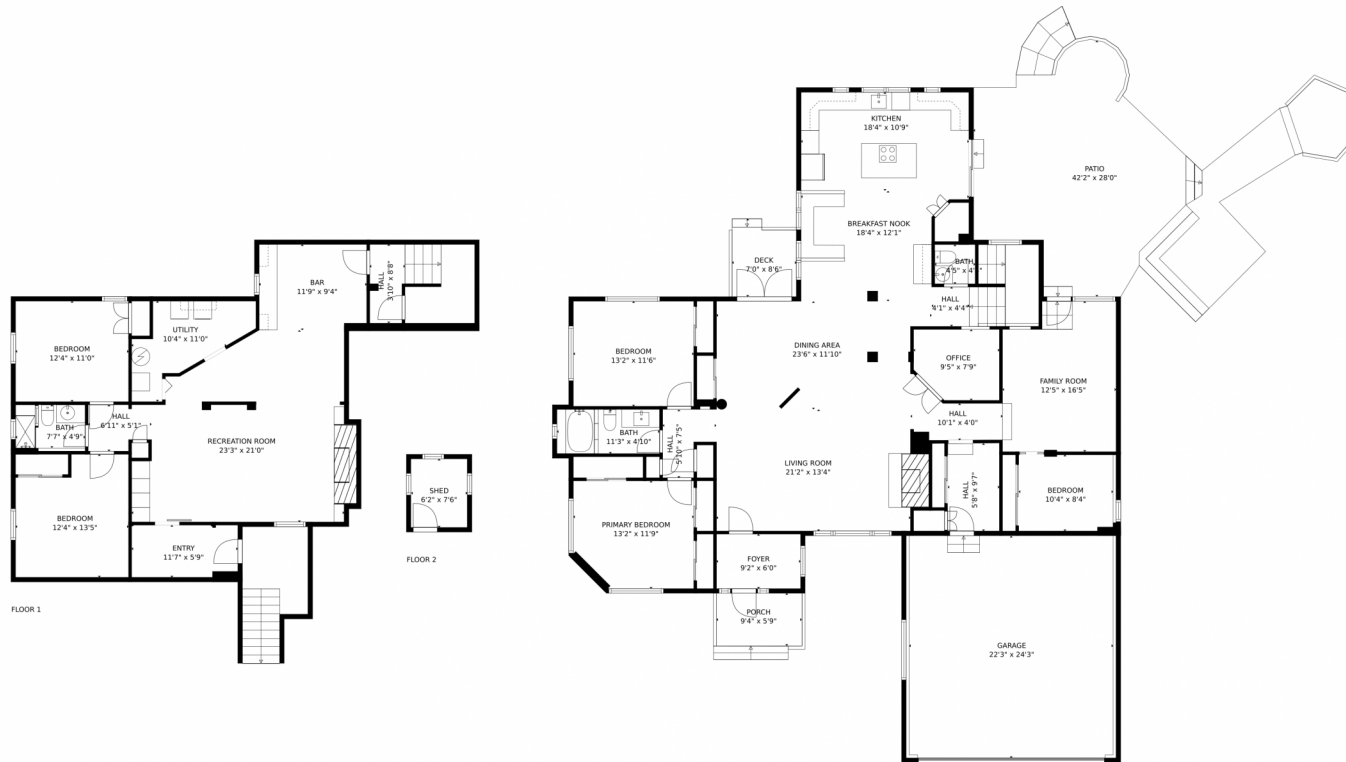
Disclaimer: Sizes and Dimensions are Approximate, Actual May Vary.



Alexis Foster
970-310-6999
alexisfoster@windermere.com



11510 W Center Avenue, Lakewood, CO 80226 – All Levels



GROSS INTERNAL AREA
Below Ground: 1124 sq. ft. FLOOR 2: 2115 sq. ft.
EXCLUDED AREAS: UTILITY: 87 sq. ft. SHED: 46 sq. ft. GARAGE: 558 sq. ft.
DECK: 55 sq. ft. PORCH: 54 sq. ft. PATIO: 698 sq. ft.
TOTAL: 3239 sq. ft.
MEASUREMENTS CALCULATED BY V1Photos.COM ARE DEEMED HIGHLY RELIABLE BUT NOT GUARANTEED.



Disclaimer: Sizes and Dimensions are Approximate, Actual May Vary.



Alexis Foster
970-310-6999
alexisfoster@windermere.com

