



15 East 4th Avenue
Longmont, CO 80504
COMMUNITY: Morningside



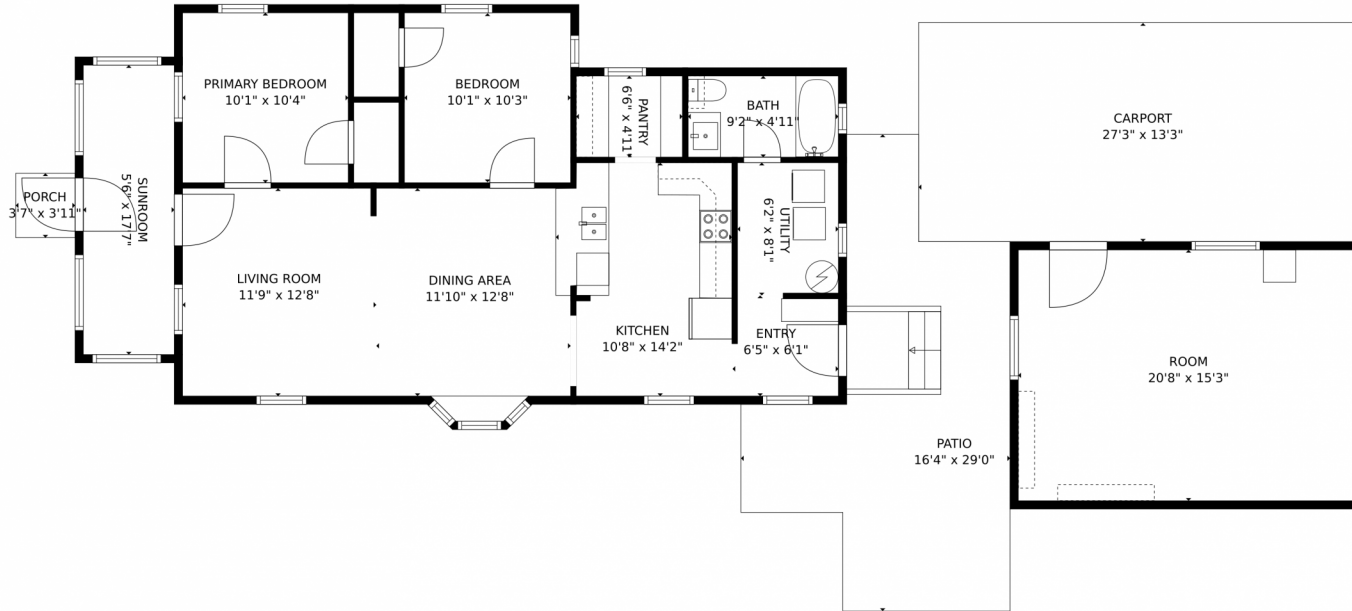
 Single Family  896 SQFT  2 Beds  1 Baths  0.15 Acre



Jason Cassidy
720-220-6964
jason@coloradorpm.com



15 East 4th Avenue, Longmont, CO 80504 – Floor Plan



GROSS INTERNAL AREA
FLOOR 1: 1294 sq. ft.
EXCLUDED AREAS: PORCH: 14 sq. ft, PATIO: 295 sq. ft, CARPORT: 363 sq. ft
TOTAL: 1294 sq. ft
MEASUREMENTS CALCULATED BY V1Photos.com ARE DEEMED HIGHLY RELIABLE BUT NOT GUARANTEED.



Disclaimer: Sizes and Dimensions are Approximate, Actual May Vary.



Jason Cassidy
720-220-6964
jason@coloradorpm.com

