



 Single Family  1730 SQFT

PROPERTY DETAILS

Welcome to 8418 Otis Street, a stunning single-family home located in the desirable community of Littleton, CO. This meticulously maintained property offers a generous living area of 1730 sqft, providing ample space for comfortable living and entertaining. Step inside and you'll discover a staircase flooded with natural light, carpeted flooring, and a baseboard radiator, creating a warm and inviting ambiance. The kitchen is a chef's dream, featuring a vaulted ceiling, an array of appliances including a range oven and refrigerator, as well as light countertops, light tile flooring, and brown cabinets that offer both style and functionality. The adjacent entrance foyer welcomes you with an abundance of natural light and beautiful tile flooring. This property also boasts an empty room that can be customized to suit your needs, whether it be a home office, a hobby room, or a playroom for the little ones. The bedroom offers a cozy retreat with its carpeted flooring and a ceiling fan, providing comfort and tranquility. The bathroom is elegantly designed with tile flooring, a bath/shower combination, a toilet, mirror, and vanity, creating a spa-like atmosphere. Step outside and you'll find a delightful deck and wooden terrace, perfect for enjoying the outdoors and entertaining guests. The backyard features a lush lawn and a fence, offering privacy and a safe space for children and pets to play. The property also includes a basement with natural light and carpet, as well as a garage with a lawn. Located in the charming community of Littleton, this property offers a peaceful and family-friendly environment. The



Andrew Wolfe
503-819-2948
andrew@andrewjwolfe.com



neighborhood provides easy access to schools, parks, shopping centers, and restaurants, ensuring a convenient and fulfilling lifestyle for its residents. Don't miss out on the opportunity to make this exceptional property your new home. Schedule a viewing today and experience the epitome of comfortable and stylish living.

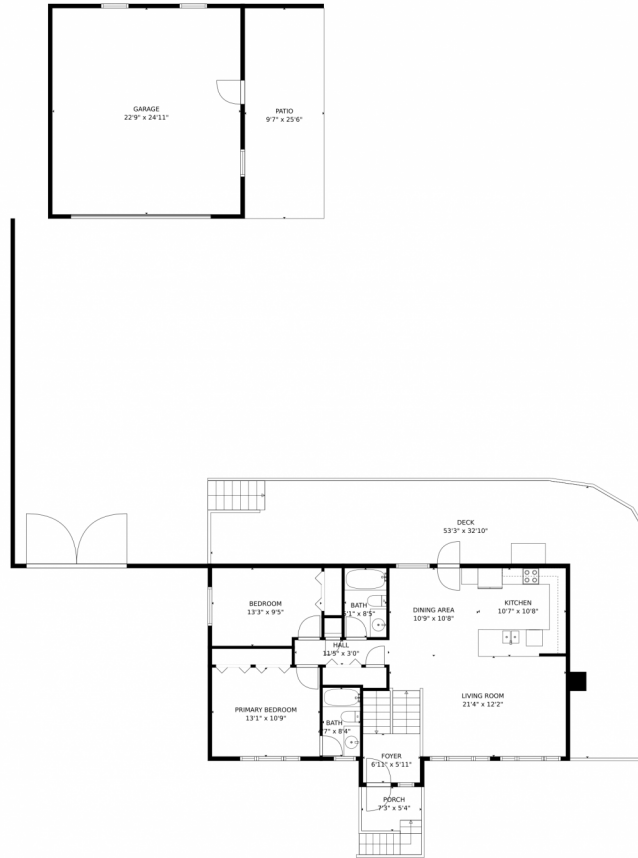


Andrew wolfe
503-819-2948
andrew@andrewjwolfe.com



Scan code
for more
property
details





GROSS INTERNAL AREA
Below Ground: 605 sq. ft, FLOOR 2: 941 sq. ft
EXCLUDED AREAS: GARAGE: 952 sq. ft, PORCH: 40 sq. ft, DECK: 744 sq. ft,
PATIO: 244 sq. ft, LOW CEILING: 58 sq. ft
TOTAL: 1546 sq. ft
MEASUREMENTS CALCULATED BY V1Photos.com ARE DEEMED HIGHLY RELIABLE BUT NOT GUARANTEED.



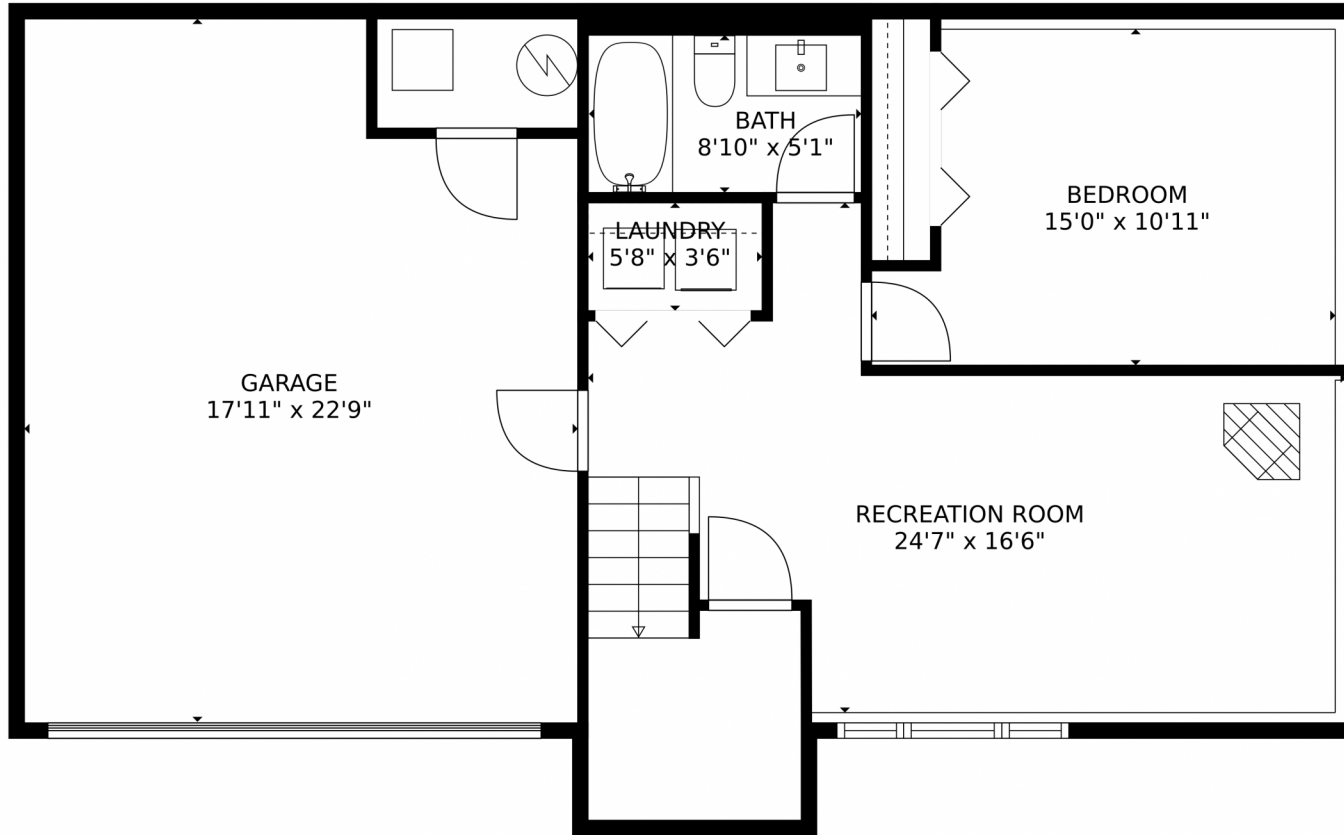
Disclaimer: Sizes and Dimensions are Approximate, Actual May Vary.



Andrew Wolfe
503-819-2948
andrew@andrewjwolfe.com



8418 Otis Street, Littleton, CO 80128 – Lower Floor



GROSS INTERNAL AREA
Below Ground: 605 sq. ft. FLOOR 2: 941 sq. ft.
EXCLUDED AREAS: GARAGE: 952 sq. ft. PORCH: 40 sq. ft. DECK: 744 sq. ft.
PATIO: 244 sq. ft. LOW CEILING: 58 sq. ft.
TOTAL: 1546 sq. ft.
MEASUREMENTS CALCULATED BY V1Photos.com ARE DEEMED HIGHLY RELIABLE BUT NOT GUARANTEED.

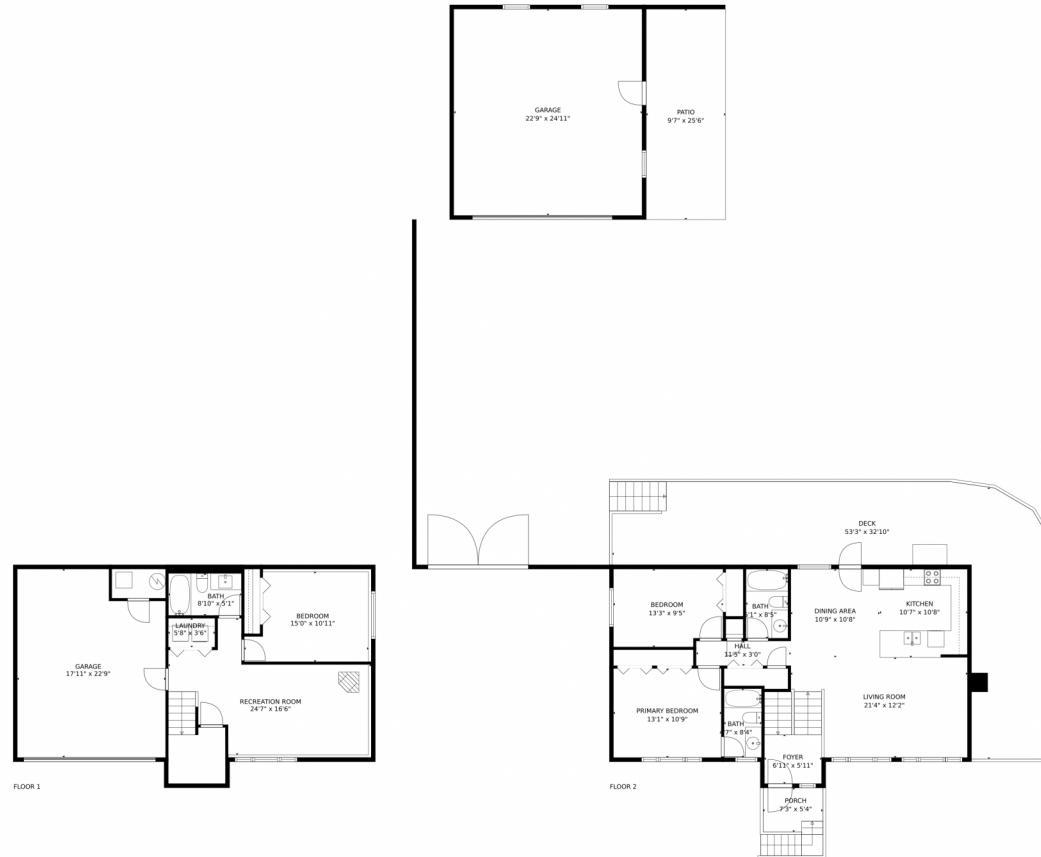
Disclaimer: Sizes and Dimensions are Approximate, Actual May Vary.



Andrew Wolfe
503-819-2948
andrew@andrewjwolfe.com



8418 Otis Street, Littleton, CO 80128 – All Floors



GROSS INTERNAL AREA
Below Ground: 605 sq. ft, FLOOR 2: 941 sq. ft.
EXCLUDED AREAS: GARAGE: 952 sq. ft, PORCH: 40 sq. ft, DECK: 744 sq. ft.
PATIO: 244 sq. ft, LOW CEILING: 58 sq. ft
TOTAL: 1546 sq. ft
MEASUREMENTS CALCULATED BY V1Photos.com ARE DEEMED HIGHLY RELIABLE BUT NOT GUARANTEED.



Disclaimer: Sizes and Dimensions are Approximate, Actual May Vary.



Andrew Wolfe
503-819-2948
andrew@andrewjwolfe.com

