



2376 South Acoma Street, Denver, CO 80223 - 2nd_floor.svg_2376_south_acoma_street_denver



 Single Family

 2200 SQFT

 4 Beds

 3 Baths



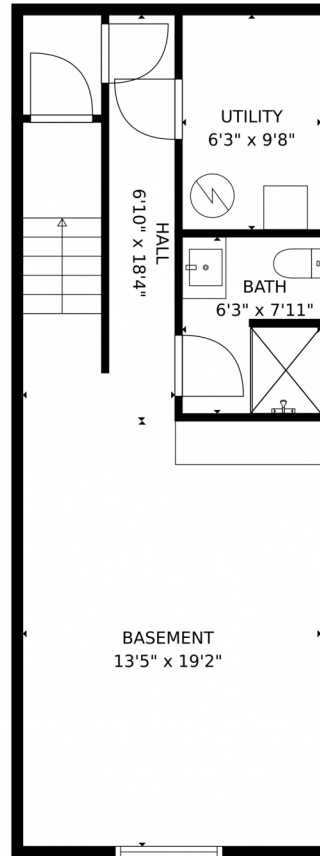
Taylor Haas
303-665-7368
taylorh@coloradorpm.com
<https://www.coloradorpm.com/available-rental-properties-denv>



Scan code
for more
property
details



2376 South Acoma Street, Denver, CO 80223 – Lower Level



GROSS INTERNAL AREA
Below Ground: 443 sq. ft, FLOOR 2: 737 sq. ft, FLOOR 3: 1027 sq. ft, FLOOR 4: 51 sq. ft
EXCLUDED AREAS: UTILITY: 61 sq. ft, GARAGE: 391 sq. ft, PATIO: 882 sq. ft,
PORCH: 20 sq. ft, TERRACE: 139 sq. ft
TOTAL: 2258 sq. ft
MEASUREMENTS CALCULATED BY V1Photos.com ARE DEEMED HIGHLY RELIABLE BUT NOT GUARANTEED.



Disclaimer: Sizes and Dimensions are Approximate, Actual May Vary.

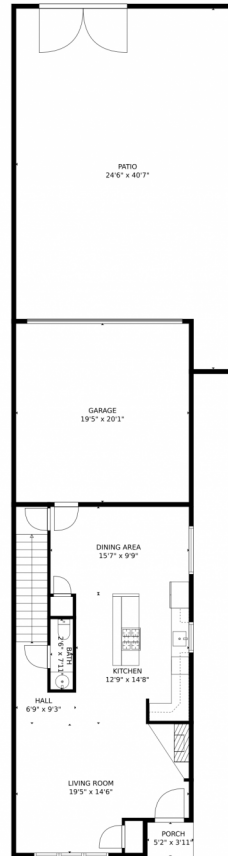


Taylor Haas
303-665-7368
taylorh@coloradorpm.com
<https://www.coloradorpm.com/available-rental-properties-denv>



Scan code
for more
property
details

2376 South Acoma Street, Denver, CO 80223 – Main Level



GROSS INTERNAL AREA
Below Ground: 443 sq. ft, FLOOR 2: 737 sq. ft, FLOOR 3: 1027 sq. ft, FLOOR 4: 51 sq. ft
EXCLUDED AREAS: UTILITY: 61 sq. ft, GARAGE: 391 sq. ft, PATIO: 882 sq. ft,
PORCH: 20 sq. ft, TERRACE: 139 sq. ft
TOTAL: 2258 sq. ft
MEASUREMENTS CALCULATED BY V1Photos.com ARE DEEMED HIGHLY RELIABLE BUT NOT GUARANTEED.



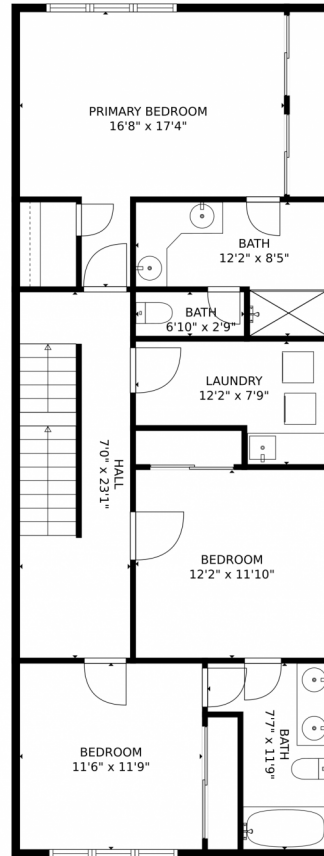
Disclaimer: Sizes and Dimensions are Approximate, Actual May Vary.



Taylor Haas
303-665-7368
taylorh@coloradorpm.com
<https://www.coloradorpm.com/available-rental-properties-denv>



2376 South Acoma Street, Denver, CO 80223 – 2nd Level



GROSS INTERNAL AREA
Below Ground: 443 sq. ft, FLOOR 2: 737 sq. ft, FLOOR 3: 1027 sq. ft, FLOOR 4: 51 sq. ft
EXCLUDED AREAS: UTILITY: 61 sq. ft, GARAGE: 391 sq. ft, PATIO: 882 sq. ft,
PORCH: 20 sq. ft, TERRACE: 139 sq. ft
TOTAL: 2258 sq. ft
MEASUREMENTS CALCULATED BY V1Photos.COM ARE DEEMED HIGHLY RELIABLE BUT NOT GUARANTEED.



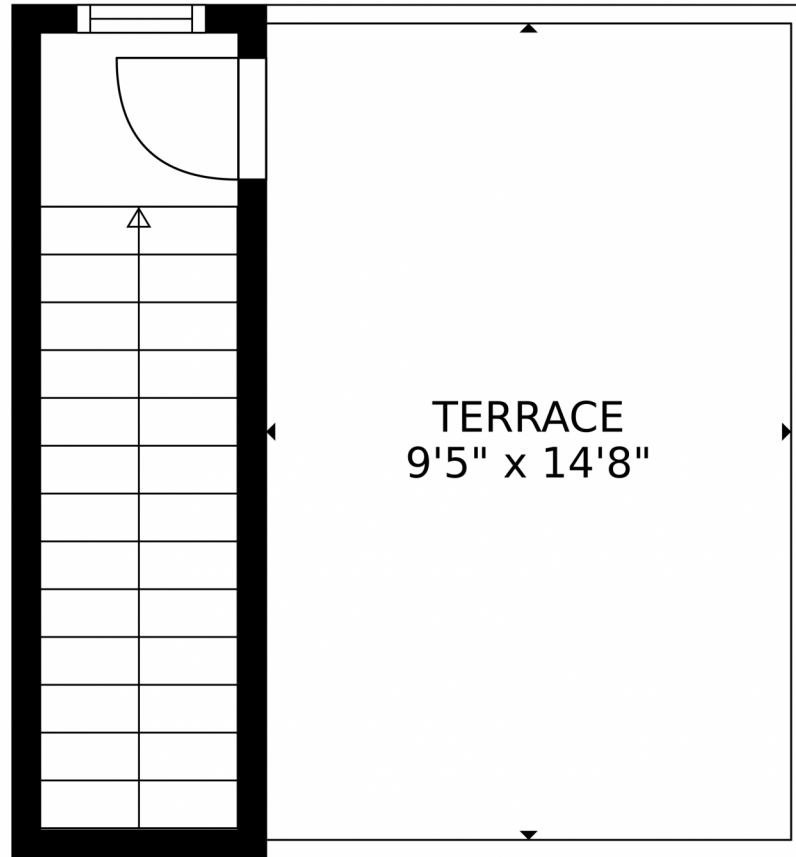
Disclaimer: Sizes and Dimensions are Approximate, Actual May Vary.



Taylor Haas
303-665-7368
taylorh@coloradorpm.com
<https://www.coloradorpm.com/available-rental-properties-denv>



Scan code
for more
property
details



GROSS INTERNAL AREA
Below Ground: 443 sq. ft., FLOOR 2: 737 sq. ft., FLOOR 3: 1027 sq. ft., FLOOR 4: 51 sq. ft.
EXCLUDED AREAS: UTILITY: 61 sq. ft., GARAGE: 391 sq. ft., PATIO: 882 sq. ft.,
PORCH: 20 sq. ft., TERRACE: 139 sq. ft.
TOTAL: 2258 sq. ft.
MEASUREMENTS CALCULATED BY V1Photos.COM ARE DEEMED HIGHLY RELIABLE BUT NOT GUARANTEED.



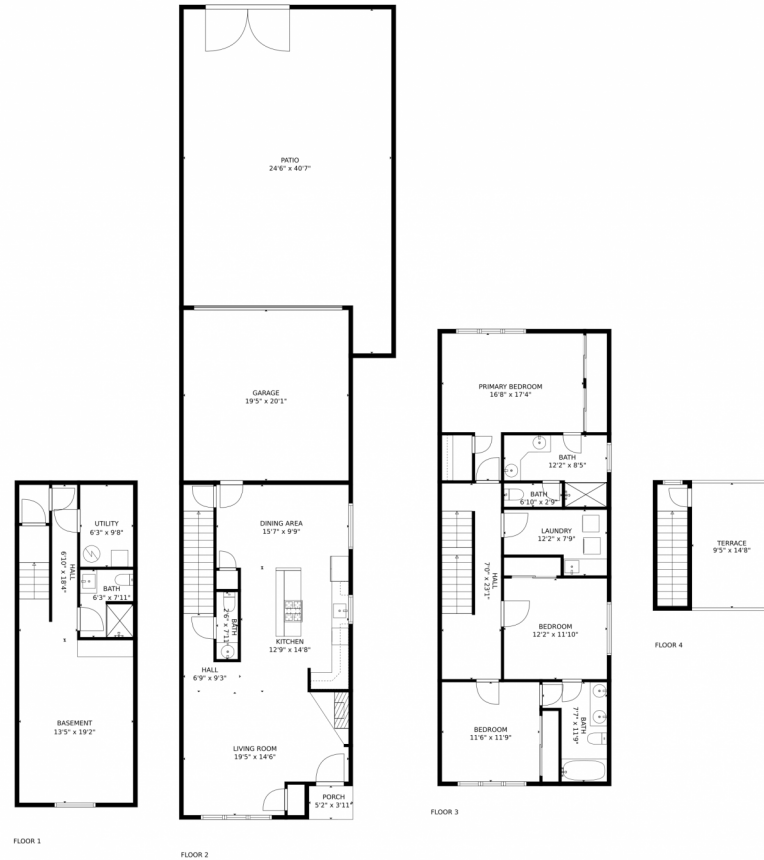
Disclaimer: Sizes and Dimensions are Approximate, Actual May Vary.



Taylor Haas
303-665-7368
taylorh@coloradorpm.com
<https://www.coloradorpm.com/available-rental-properties-denv>



2376 South Acoma Street, Denver, CO 80223 – All Levels



GROSS INTERNAL AREA
Below Ground: 443 sq. ft, FLOOR 2: 737 sq. ft, FLOOR 3: 1027 sq. ft, FLOOR 4: 51 sq. ft
EXCLUDED AREAS: UTILITY: 61 sq. ft, GARAGE: 391 sq. ft, PATIO: 882 sq. ft,
PORCH: 20 sq. ft, TERRACE: 139 sq. ft
TOTAL: 2258 sq. ft
MEASUREMENTS CALCULATED BY V1Photos.COM ARE DEEMED HIGHLY RELIABLE BUT NOT GUARANTEED.

Disclaimer: Sizes and Dimensions are Approximate, Actual May Vary.



Taylor Haas
303-665-7368
taylorh@coloradorpm.com
<https://www.coloradorpm.com/available-rental-properties-denv>

