




 Single Family

 1884 SQFT

 3 Beds

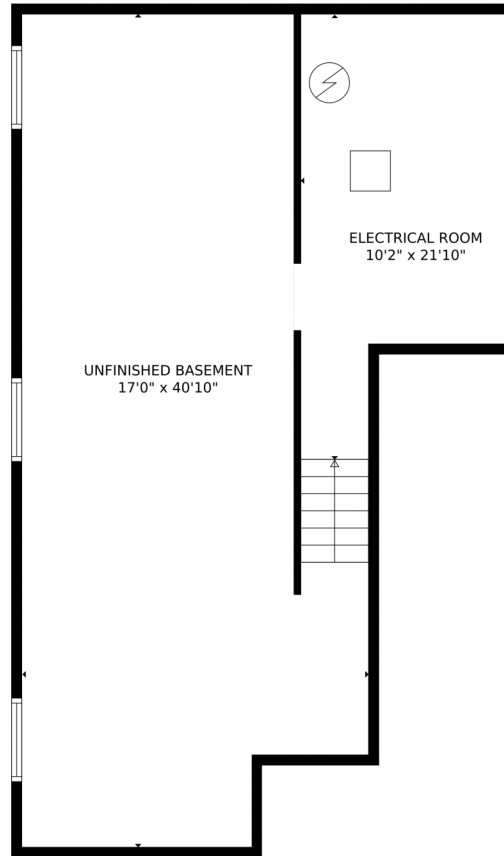
 2/1 Baths



Taylor Haas
303-665-7368
taylorh@coloradorpm.com
<https://www.coloradorpm.com/available-rental-properties-denver>



1621 Derbyshire Street, Colorado Springs, CO 80910 – Lower Level



GROSS INTERNAL AREA
Below Ground: 0 sq. ft, FLOOR 2: 841 sq. ft, FLOOR 3: 811 sq. ft
EXCLUDED AREAS: UNFINISHED BASEMENT: 580 sq. ft, ELECTRICAL ROOM: 200 sq. ft, GARAGE: 376 sq. ft,
PATIO: 111 sq. ft, PORCH: 167 sq. ft, OPEN TO BELOW: 34 sq. ft
TOTAL: 1652 sq. ft
MEASUREMENTS CALCULATED BY V1Photos.com ARE DEEMED HIGHLY RELIABLE BUT NOT GUARANTEED.



Disclaimer: Sizes and Dimensions are Approximate, Actual May Vary.

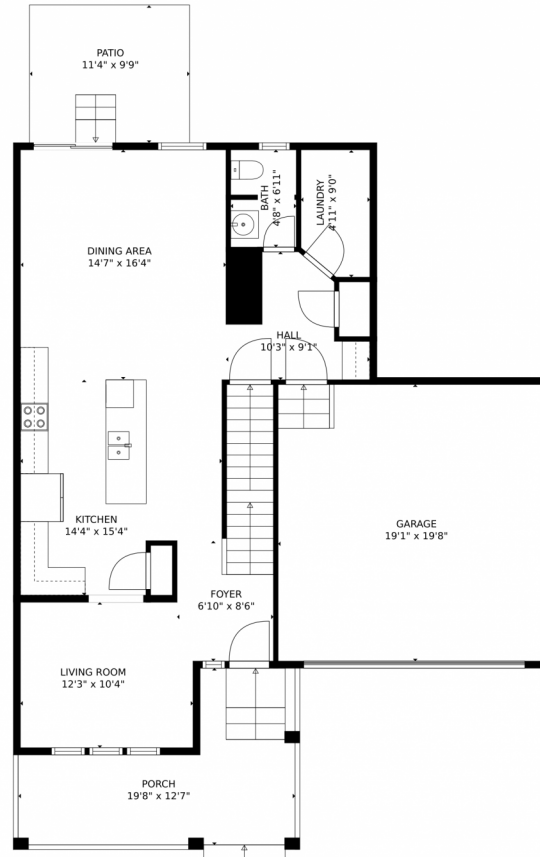


Taylor Haas
303-665-7368
taylorh@coloradorpm.com
<https://www.coloradorpm.com/available-rental-properties-denver>



Scan code
for more
property
details

1621 Derbyshire Street, Colorado Springs, CO 80910 – Main Level



GROSS INTERNAL AREA
Below Ground: 0 sq. ft, FLOOR 2: 841 sq. ft, FLOOR 3: 811 sq. ft
EXCLUDED AREAS: UNFINISHED BASEMENT: 580 sq. ft, ELECTRICAL ROOM: 200 sq. ft, GARAGE: 376 sq. ft,
PATIO: 111 sq. ft, PORCH: 167 sq. ft, OPEN TO BELOW: 34 sq. ft
TOTAL: 1652 sq. ft
MEASUREMENTS CALCULATED BY V1Photos.com ARE DEEMED HIGHLY RELIABLE BUT NOT GUARANTEED.



Disclaimer: Sizes and Dimensions are Approximate, Actual May Vary.



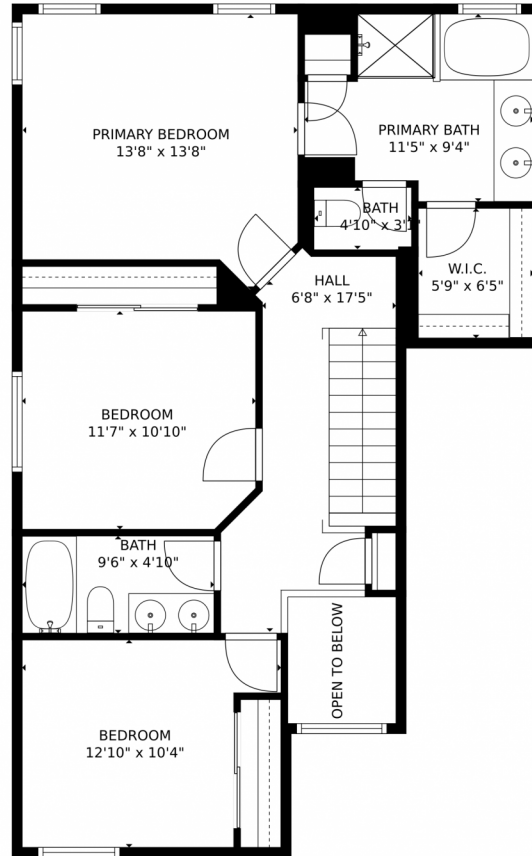
Taylor Haas
303-665-7368
taylorh@coloradorpm.com
<https://www.coloradorpm.com/available-rental-properties-denver>



Scan code
for more
property
details



1621 Derbyshire Street, Colorado Springs, CO 80910 – Upper Level



GROSS INTERNAL AREA
Below Ground: 0 sq. ft, FLOOR 2: 841 sq. ft, FLOOR 3: 811 sq. ft
EXCLUDED AREAS: UNFINISHED BASEMENT: 580 sq. ft, ELECTRICAL ROOM: 200 sq. ft, GARAGE: 376 sq. ft,
PATIO: 111 sq. ft, PORCH: 167 sq. ft, OPEN TO BELOW: 34 sq. ft
TOTAL: 1652 sq. ft
MEASUREMENTS CALCULATED BY V1Photos.COM ARE DEEMED HIGHLY RELIABLE BUT NOT GUARANTEED.



Disclaimer: Sizes and Dimensions are Approximate, Actual May Vary.



Taylor Haas
303-665-7368
taylorh@coloradorpm.com
<https://www.coloradorpm.com/available-rental-properties-denver>



Scan code
for more
property
details



1621 Derbyshire Street, Colorado Springs, CO 80910 – All Levels



GROSS INTERNAL AREA
 Below Ground: 0 sq. ft, FLOOR 2: 841 sq. ft, FLOOR 3: 811 sq. ft
 EXCLUDED AREAS: UNFINISHED BASEMENT: 580 sq. ft, ELECTRICAL ROOM: 200 sq. ft, GARAGE: 376 sq. ft,
 PATIO: 111 sq. ft, PORCH: 167 sq. ft, OPEN TO BELOW: 34 sq. ft
 TOTAL: 1652 sq. ft
 MEASUREMENTS CALCULATED BY V1Photos.COM ARE DEEMED HIGHLY RELIABLE BUT NOT GUARANTEED.



Disclaimer: Sizes and Dimensions are Approximate, Actual May Vary.



Taylor Haas
 303-665-7368
 taylorh@coloradorpm.com
<https://www.coloradorpm.com/available-rental-properties-denver>



Scan code
 for more
 property
 details

