


 Single Family

 987 SQFT

 3 Beds

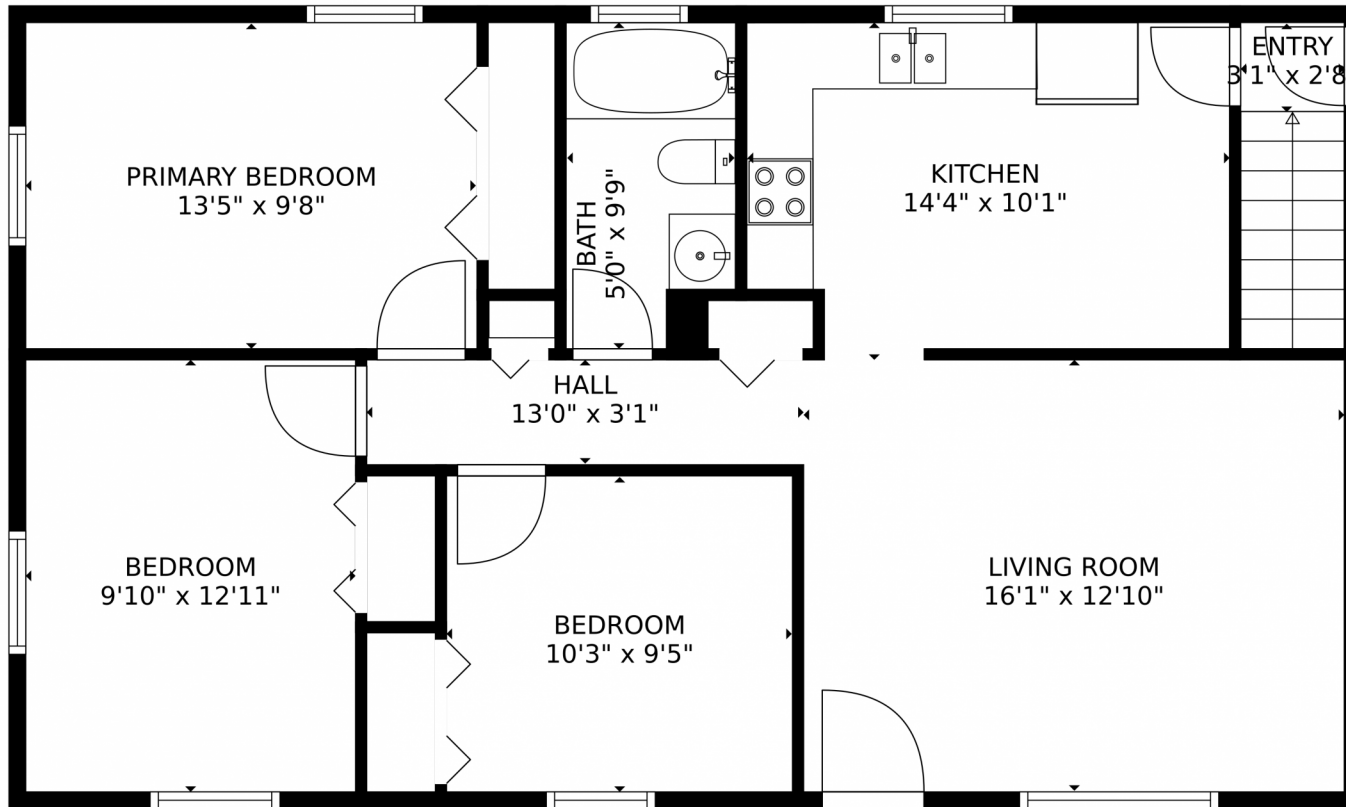
 1 Baths



**Taylor Haas**  
 303-665-7368  
 taylorh@coloradorpm.com  
<https://www.coloradorpm.com/available-rental-properties-denver>



13204 Lackland Drive, Denver, CO 80239 – Main Level



GROSS INTERNAL AREA  
Below Ground: 0 sq. ft, FLOOR 2: 901 sq. ft  
EXCLUDED AREAS: UNFINISHED BASEMENT: 894 sq. ft  
TOTAL: 901 sq. ft  
MEASUREMENTS CALCULATED BY V1Photos.com ARE DEEMED HIGHLY RELIABLE BUT NOT GUARANTEED.

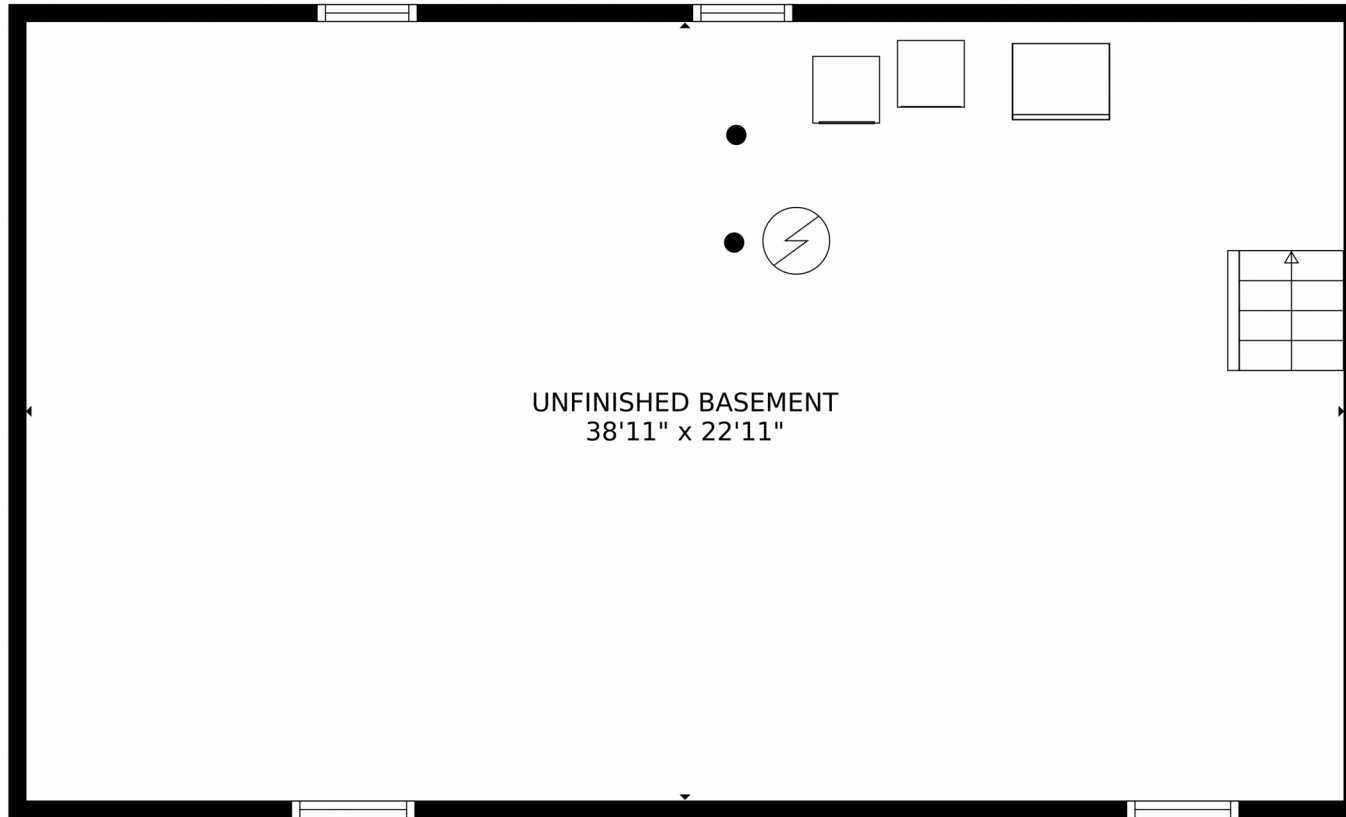


Disclaimer: Sizes and Dimensions are Approximate, Actual May Vary.



**Taylor Haas**  
303-665-7368  
taylorh@coloradorpm.com  
<https://www.coloradorpm.com/available-rental-properties-denver>





UNFINISHED BASEMENT  
38'11" x 22'11"

GROSS INTERNAL AREA  
Below Ground: 0 sq. ft, FLOOR 2: 901 sq. ft  
EXCLUDED AREAS: UNFINISHED BASEMENT: 894 sq. ft  
TOTAL: 901 sq. ft  
MEASUREMENTS CALCULATED BY V1Photos.COM ARE DEEMED HIGHLY RELIABLE BUT NOT GUARANTEED.



Disclaimer: Sizes and Dimensions are Approximate, Actual May Vary.



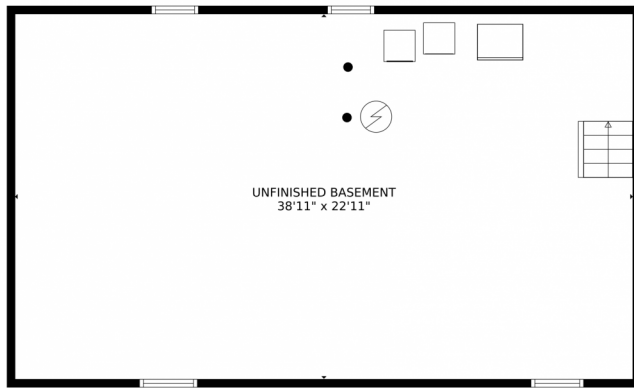
**Taylor Haas**  
303-665-7368  
taylorh@coloradorpm.com  
<https://www.coloradorpm.com/available-rental-properties-denver>



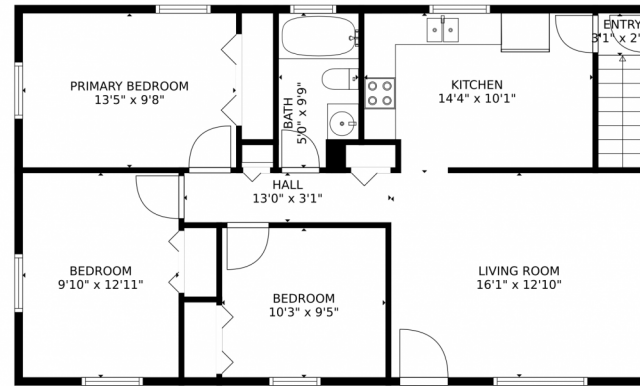
Scan code  
for more  
property  
details



# 13204 Lackland Drive, Denver, CO 80239 – All Levels



FLOOR 1



FLOOR 2

GROSS INTERNAL AREA  
Below Ground: 0 sq. ft, FLOOR 2: 901 sq. ft  
EXCLUDED AREAS: UNFINISHED BASEMENT: 894 sq. ft  
TOTAL: 901 sq. ft  
MEASUREMENTS CALCULATED BY V1Photos.com ARE DEEMED HIGHLY RELIABLE BUT NOT GUARANTEED.



Disclaimer: Sizes and Dimensions are Approximate, Actual May Vary.



**Taylor Haas**  
303-665-7368  
taylorh@coloradorpm.com  
<https://www.coloradorpm.com/available-rental-properties-denver>



Scan code  
for more  
property  
details

