



16364 Prairie Farm Circle  
Parker, CO 80134



Single Family



3011 SQFT



3 Beds



2/1 Baths



3 Car

## PROPERTY DETAILS

This beautiful Parker home offers 3 bedrooms, 3 baths, a bonus room, office/study and a spacious living environment. With its charming porch, beautiful hardwood floors, and a cozy fireplace, this property is perfect for those looking for comfort and style. The kitchen is a chef's dream, and the backyard is an outdoor oasis with a deck and a patio area. Don't miss the opportunity to make this stunning home your own!



**Theresa Hinch**

303-947-5346

[theresa.hinch@westandmain.com](mailto:theresa.hinch@westandmain.com)

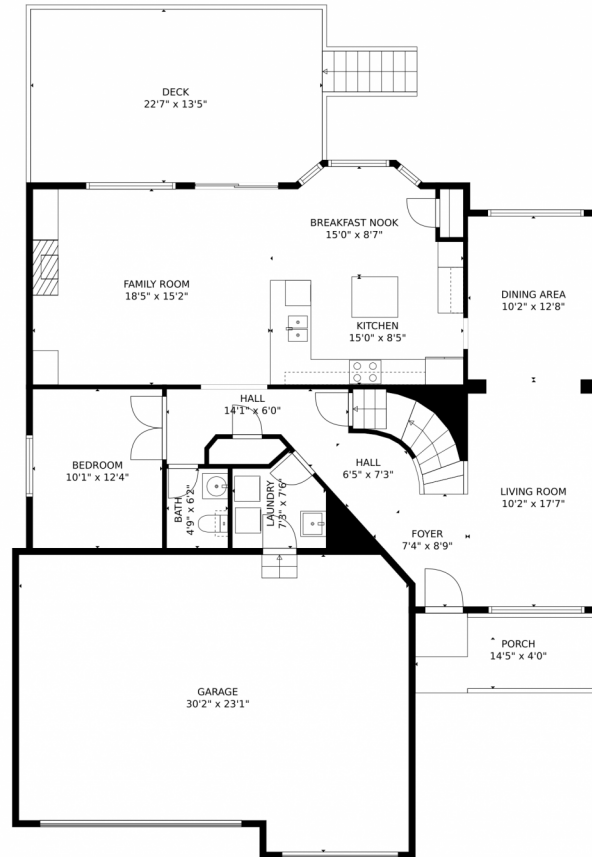
<https://www.westandmain.com>



Scan code  
for more  
property  
details



# 16364 Prairie Farm Circle, Parker, CO 80134 – 1st Floor



GROSS INTERNAL AREA  
Below Ground: 0 sq. ft, FLOOR 2: 1283 sq. ft, FLOOR 3: 1522 sq. ft  
EXCLUDED AREAS: ELECTRICAL ROOM: 125 sq. ft, UNFINISHED BASEMENT: 1058 sq. ft, GARAGE: 648 sq. ft,  
PORCH: 82 sq. ft, DECK: 303 sq. ft, OPEN TO BELOW: 262 sq. ft  
TOTAL: 2805 sq. ft  
MEASUREMENTS CALCULATED BY V1Photos.com ARE DEEMED HIGHLY RELIABLE BUT NOT GUARANTEED.



Disclaimer: Sizes and Dimensions are Approximate, Actual May Vary.



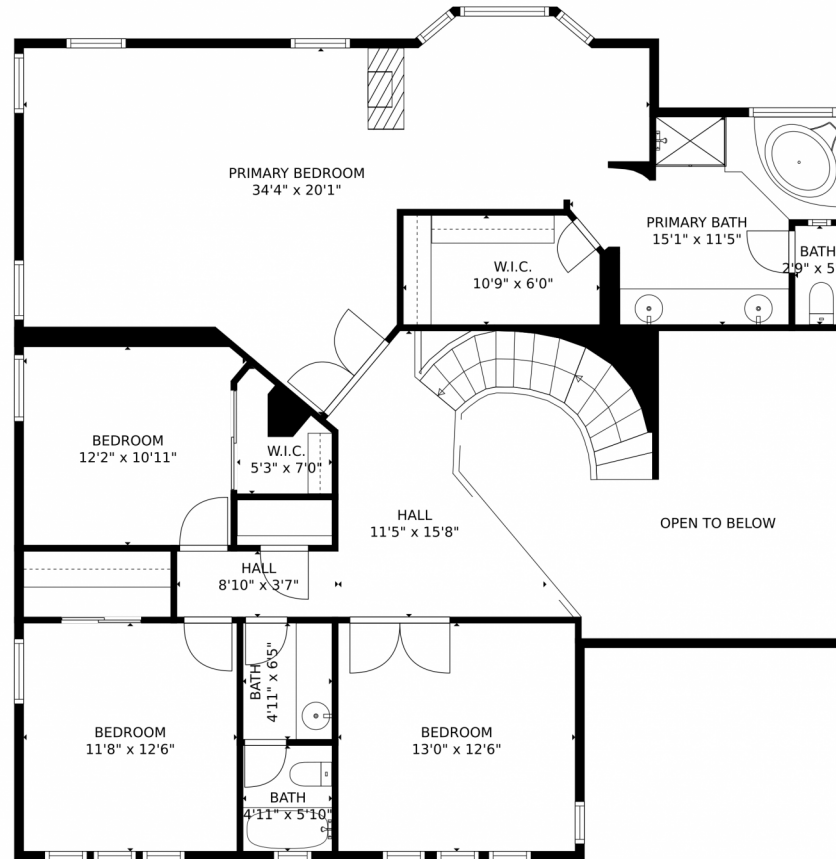
**Theresa Hinch**  
303-947-5346  
theresa.hinch@westandmain.com  
<https://www.westandmain.com>



Scan code  
for more  
property  
details



# 16364 Prairie Farm Circle, Parker, CO 80134 – 2nd Floor



GROSS INTERNAL AREA  
Below Ground: 0 sq. ft, FLOOR 2: 1283 sq. ft, FLOOR 3: 1522 sq. ft  
EXCLUDED AREAS: ELECTRICAL ROOM: 125 sq. ft, UNFINISHED BASEMENT: 1058 sq. ft, GARAGE: 648 sq. ft,  
PORCH: 82 sq. ft, DECK: 303 sq. ft, OPEN TO BELOW: 262 sq. ft  
TOTAL: 2805 sq. ft  
MEASUREMENTS CALCULATED BY V1Photos.COM ARE DEEMED HIGHLY RELIABLE BUT NOT GUARANTEED.



Disclaimer: Sizes and Dimensions are Approximate, Actual May Vary.



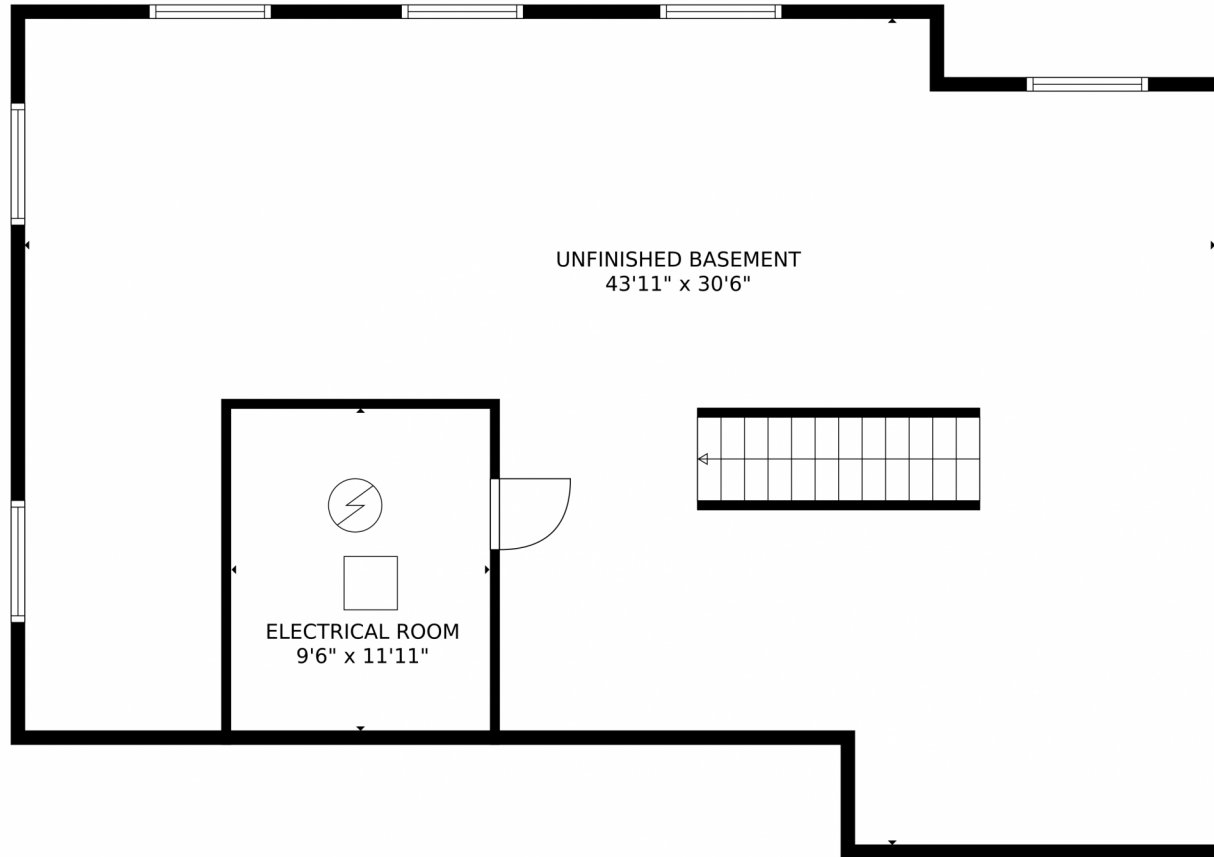
**Theresa Hinch**  
303-947-5346  
theresa.hinch@westandmain.com  
<https://www.westandmain.com>



Scan code  
for more  
property  
details



16364 Prairie Farm Circle, Parker, CO 80134 – Basement



GROSS INTERNAL AREA  
Below Ground: 0 sq. ft, FLOOR 2: 1283 sq. ft, FLOOR 3: 1522 sq. ft  
EXCLUDED AREAS: ELECTRICAL ROOM: 125 sq. ft, UNFINISHED BASEMENT: 1058 sq. ft, GARAGE: 648 sq. ft,  
PORCH: 82 sq. ft, DECK: 303 sq. ft, OPEN TO BELOW: 262 sq. ft  
TOTAL: 2805 sq. ft  
MEASUREMENTS CALCULATED BY V1Photos.COM ARE DEEMED HIGHLY RELIABLE BUT NOT GUARANTEED.



Disclaimer: Sizes and Dimensions are Approximate, Actual May Vary.

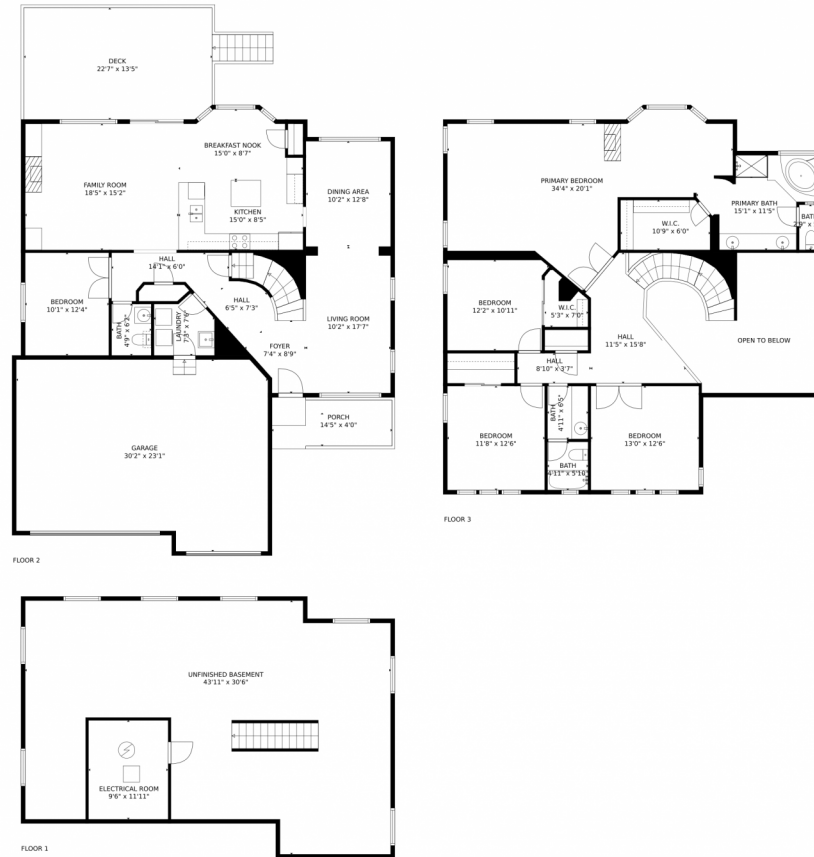


**Theresa Hinch**  
303-947-5346  
theresa.hinch@westandmain.com  
<https://www.westandmain.com>



Scan code  
for more  
property  
details

# 16364 Prairie Farm Circle, Parker, CO 80134 – All Floors



GROSS INTERNAL AREA  
Below Ground: 0 sq. ft, FLOOR 2: 1283 sq. ft, FLOOR 3: 1522 sq. ft  
EXCLUDED AREAS: ELECTRICAL ROOM: 125 sq. ft, UNFINISHED BASEMENT: 1058 sq. ft, GARAGE: 648 sq. ft,  
PORCH: 82 sq. ft, DECK: 303 sq. ft, OPEN TO BELOW: 262 sq. ft  
TOTAL: 2805 sq. ft  
MEASUREMENTS CALCULATED BY V1Photos.com ARE DEEMED HIGHLY RELIABLE BUT NOT GUARANTEED.



Disclaimer: Sizes and Dimensions are Approximate, Actual May Vary.



**Theresa Hinch**  
303-947-5346  
theresa.hinch@westandmain.com  
<https://www.westandmain.com>



Scan code  
for more  
property  
details

