



5724 South Bahama Circle West  
 Aurora, CO 80015  
 COMMUNITY: Piney Creek East

MLS # 938380



Single Family   2667 SQFT   6 Beds   3/1 Baths   3 Car   0.12 Acre

## PROPERTY DETAILS

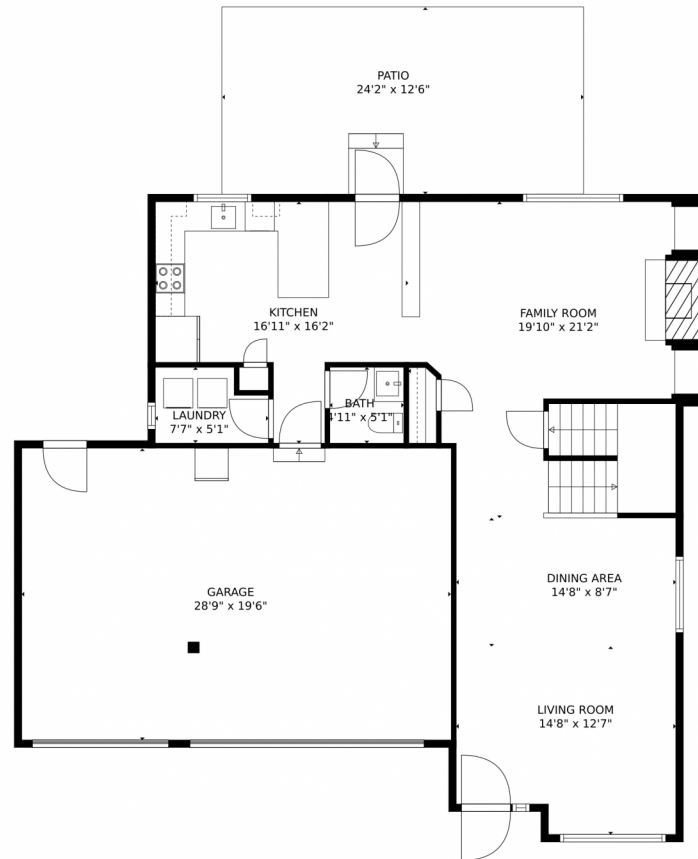
Located in the desirable community of Piney Creek East in Aurora, CO, this spacious single-family home offers 6 bedrooms, 3 full bathrooms, and 1 half bathroom. With 2,667 square feet of living space and a 3-car garage, there is plenty of room for your family and vehicles. The property features a beautiful patio area with a gazebo and a fenced-in yard for privacy. Inside, you'll find a cozy living room with a fireplace, a chef's kitchen with stainless steel appliances, and a spacious dining area. The bedrooms are generously sized and the bathrooms are beautifully designed. The property also includes solar panels for energy-efficient power production. The Piney Creek East community offers parks, walking trails, and a community center for residents to enjoy.



**Rachel Burke**  
 720-335-7193  
 rachel@yournestfinder.net  
<https://rachelburke-1.myrealtyonegroup.com/>



# 5724 South Bahama Circle West, Aurora, CO 80015 – 1st Floor



GROSS INTERNAL AREA  
Below Ground: 524 sq. ft. FLOOR 2: 961 sq. ft. FLOOR 3: 953 sq. ft.  
EXCLUDED AREAS: ELECTRICAL ROOM: 72 sq. ft. UNDEFINED: 9 sq. ft. GARAGE: 562 sq. ft.  
PATIO: 303 sq. ft. OPEN TO BELOW: 312 sq. ft.  
TOTAL: 2438 sq. ft.  
MEASUREMENTS CALCULATED BY V1Photos.com ARE DEEMED HIGHLY RELIABLE BUT NOT GUARANTEED.

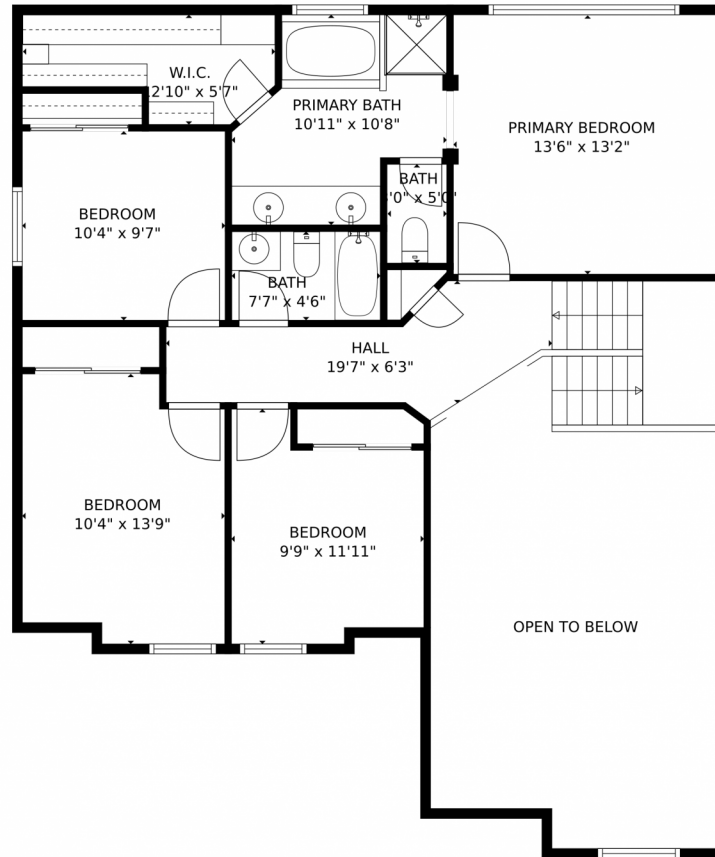
Disclaimer: Sizes and Dimensions are Approximate, Actual May Vary.



**Rachel Burke**  
720-335-7193  
rachel@yournestfinder.net  
<https://rachelburke-1.myrealtyonegroup.com/>



5724 South Bahama Circle West, Aurora, CO 80015 – 2nd Floor



GROSS INTERNAL AREA  
Below Ground: 524 sq. ft, FLOOR 2: 961 sq. ft, FLOOR 3: 953 sq. ft  
EXCLUDED AREAS: ELECTRICAL ROOM: 72 sq. ft, UNDEFINED: 9 sq. ft, GARAGE: 562 sq. ft.  
PATIO: 303 sq. ft, OPEN TO BELOW: 312 sq. ft  
TOTAL: 2438 sq. ft  
MEASUREMENTS CALCULATED BY V1Photos.com ARE DEEMED HIGHLY RELIABLE BUT NOT GUARANTEED.



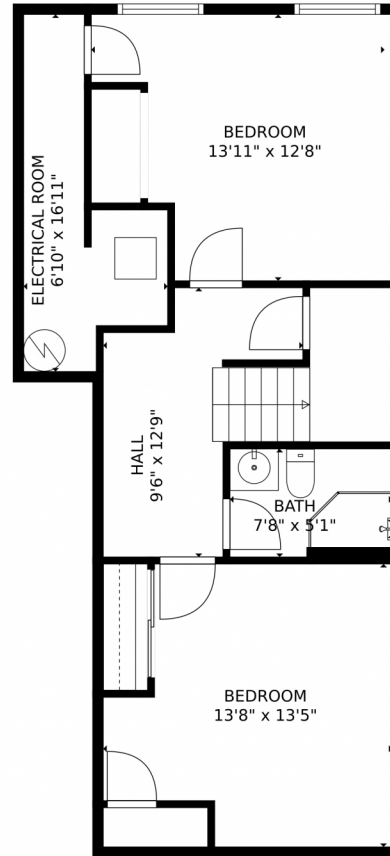
Disclaimer: Sizes and Dimensions are Approximate, Actual May Vary.



**Rachel Burke**  
720-335-7193  
rachel@yournestfinder.net  
<https://rachelburke-1.myrealtyonegroup.com/>



5724 South Bahama Circle West, Aurora, CO 80015 – Basement



GROSS INTERNAL AREA  
Below Ground: 524 sq. ft, FLOOR 2: 961 sq. ft, FLOOR 3: 953 sq. ft  
EXCLUDED AREAS: ELECTRICAL ROOM: 72 sq. ft, UNDEFINED: 9 sq. ft, GARAGE: 562 sq. ft.  
PATIO: 303 sq. ft, OPEN TO BELOW: 312 sq. ft  
TOTAL: 2438 sq. ft  
MEASUREMENTS CALCULATED BY V1Photos.com ARE DEEMED HIGHLY RELIABLE BUT NOT GUARANTEED.



Disclaimer: Sizes and Dimensions are Approximate, Actual May Vary.



**Rachel Burke**  
720-335-7193  
rachel@yournestfinder.net  
<https://rachelburke-1.myrealtyonegroup.com/>



# 5724 South Bahama Circle West, Aurora, CO 80015 – All Floors



GROSS INTERNAL AREA  
Below Ground: 524 sq. ft, FLOOR 2: 961 sq. ft, FLOOR 3: 953 sq. ft  
EXCLUDED AREAS: ELECTRICAL ROOM: 72 sq. ft, UNDEFINED: 9 sq. ft, GARAGE: 562 sq. ft,  
PATIO: 303 sq. ft, OPEN TO BELOW: 312 sq. ft  
TOTAL: 2438 sq. ft  
MEASUREMENTS CALCULATED BY V1Photos.COM ARE DEEMED HIGHLY RELIABLE BUT NOT GUARANTEED.



Disclaimer: Sizes and Dimensions are Approximate, Actual May Vary.



**Rachel Burke**  
720-335-7193  
rachel@yournestfinder.net  
<https://rachelburke-1.myrealtyonegroup.com/>

