

Single Family



3126 SQFT



3 Beds



2/1 Baths



2 Car



0.1 Acre



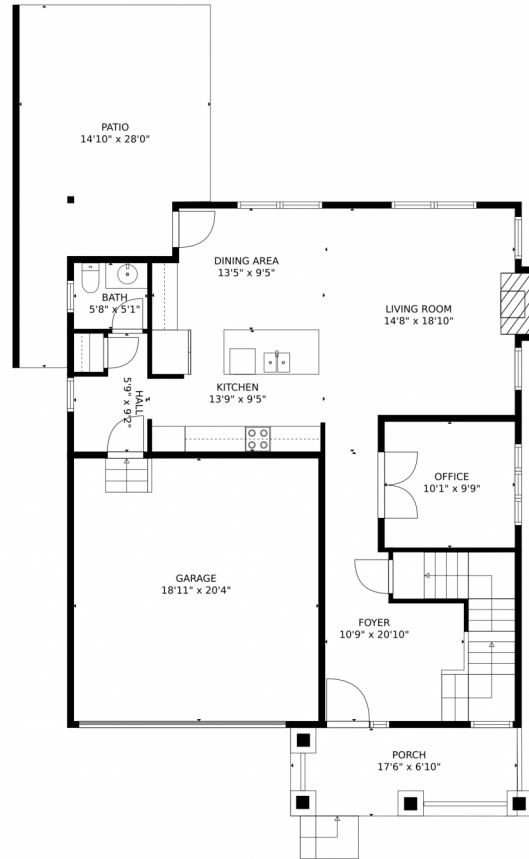
**Reba Tipton**  
970-215-6768  
rebatipton@windermere.com



Scan code  
for more  
property  
details



# 2220 Friar Tuck Court, Fort Collins, CO 80524 – Main Level



GROSS INTERNAL AREA  
Below Ground: 31 sq. ft, FLOOR 2: 917 sq. ft, FLOOR 3: 1168 sq. ft  
EXCLUDED AREAS: UNFINISHED BASEMENT: 821 sq. ft, GARAGE: 385 sq. ft, PATIO: 307 sq. ft,  
PORCH: 120 sq. ft, FIREPLACE: 6 sq. ft, OPEN TO BELOW: 49 sq. ft  
TOTAL: 2116 sq. ft  
MEASUREMENTS CALCULATED BY V1Photos.com ARE DEEMED HIGHLY RELIABLE BUT NOT GUARANTEED.



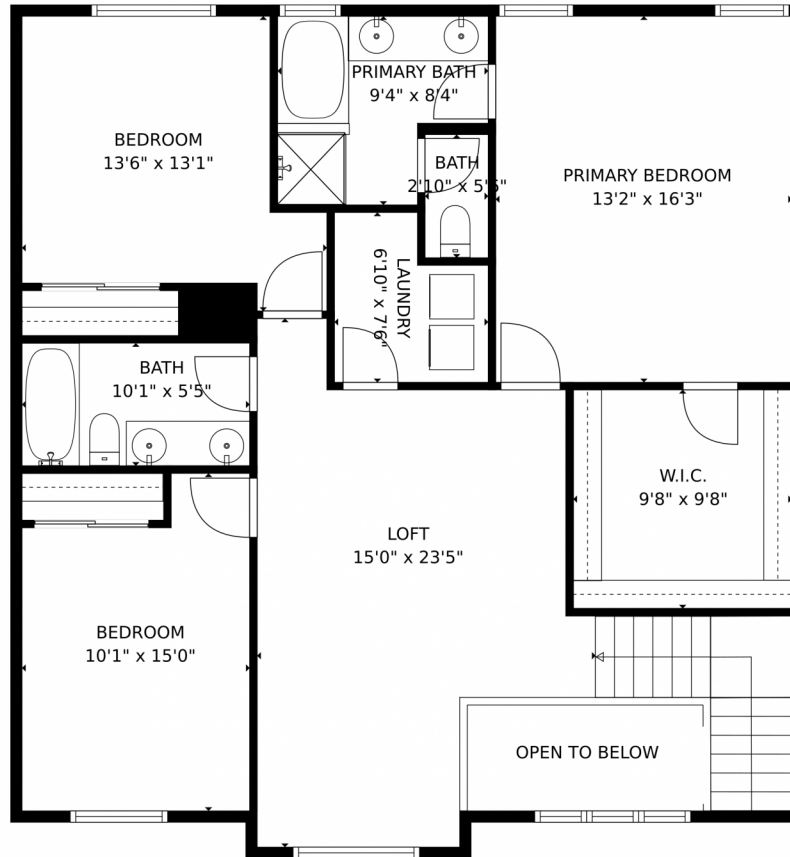
Disclaimer: Sizes and Dimensions are Approximate, Actual May Vary.



Reba Tipton  
970-215-6768  
rebatipton@windermere.com



# 2220 Friar Tuck Court, Fort Collins, CO 80524 – Upper Level



GROSS INTERNAL AREA  
Below Ground: 31 sq. ft, FLOOR 2: 917 sq. ft, FLOOR 3: 1168 sq. ft  
EXCLUDED AREAS: UNFINISHED BASEMENT: 821 sq. ft, GARAGE: 385 sq. ft, PATIO: 307 sq. ft,  
PORCH: 120 sq. ft, FIREPLACE: 6 sq. ft, OPEN TO BELOW: 49 sq. ft  
TOTAL: 2116 sq. ft  
MEASUREMENTS CALCULATED BY V1Photos.COM ARE DEEMED HIGHLY RELIABLE BUT NOT GUARANTEED.

Disclaimer: Sizes and Dimensions are Approximate, Actual May Vary.

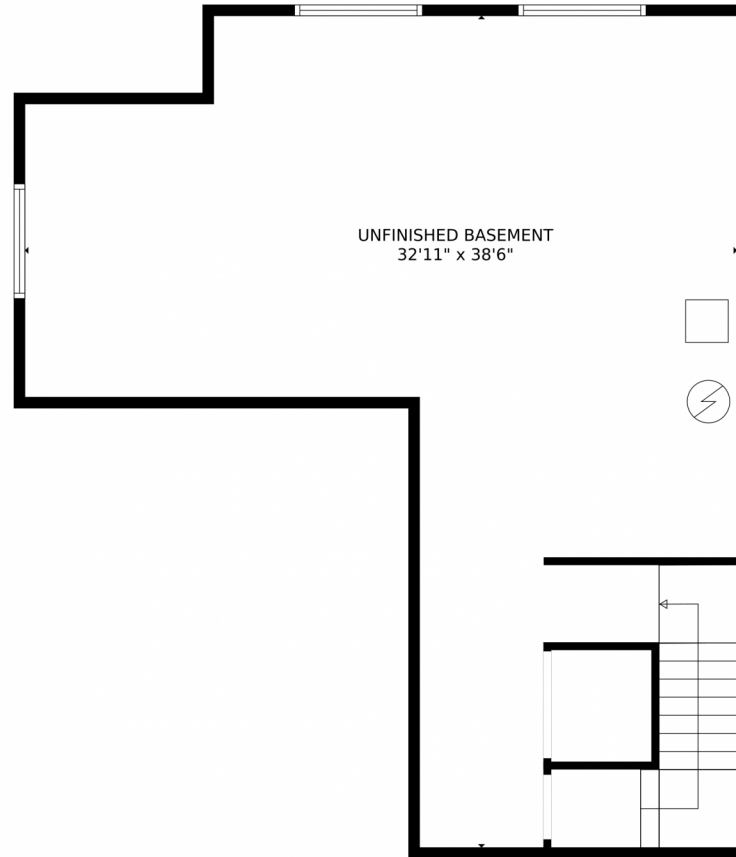


Reba Tipton  
970-215-6768  
rebatipton@windermere.com



Scan code  
for more  
property  
details

# 2220 Friar Tuck Court, Fort Collins, CO 80524 – Lower Level



GROSS INTERNAL AREA  
Below Ground: 31 sq. ft, FLOOR 2: 917 sq. ft, FLOOR 3: 1168 sq. ft  
EXCLUDED AREAS: UNFINISHED BASEMENT: 821 sq. ft, GARAGE: 385 sq. ft, PATIO: 307 sq. ft,  
PORCH: 120 sq. ft, FIREPLACE: 6 sq. ft, OPEN TO BELOW: 49 sq. ft  
TOTAL: 2116 sq. ft  
MEASUREMENTS CALCULATED BY V1Photos.com ARE DEEMED HIGHLY RELIABLE BUT NOT GUARANTEED.



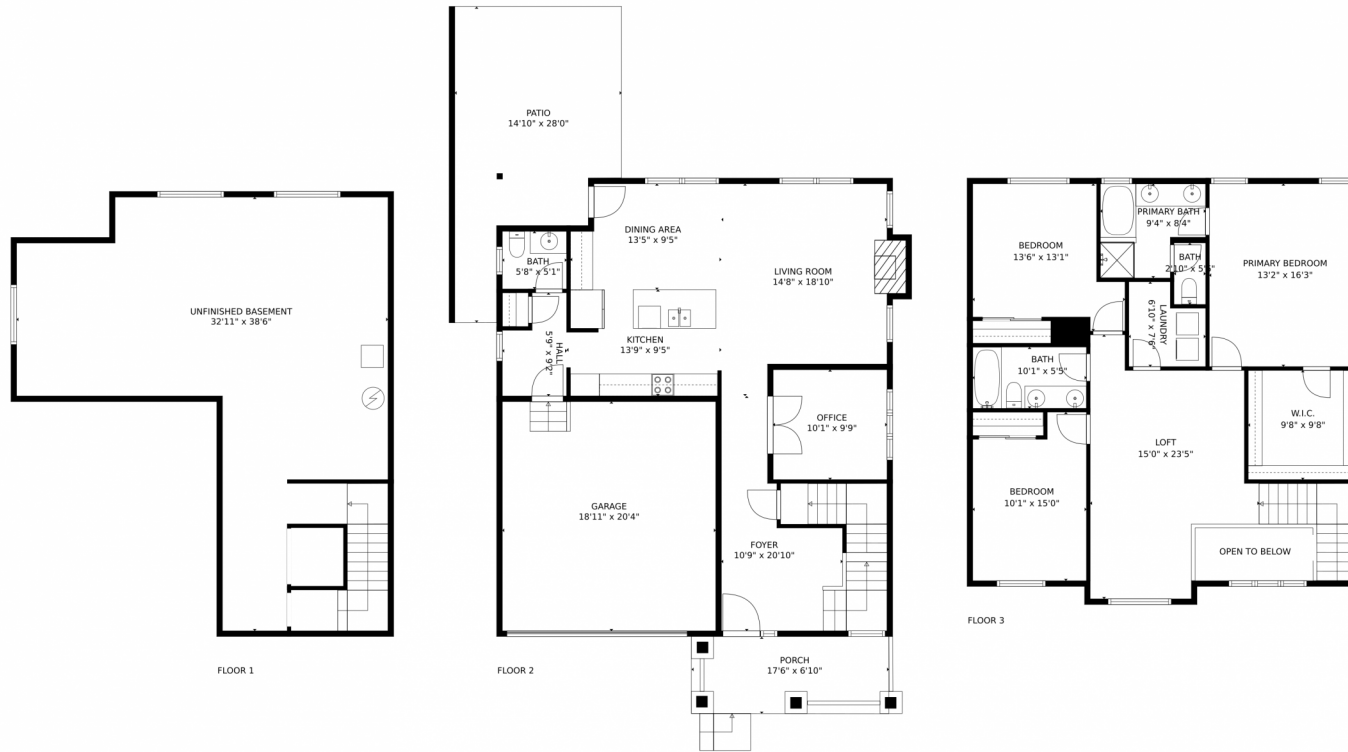
Disclaimer: Sizes and Dimensions are Approximate, Actual May Vary.



**Reba Tipton**  
970-215-6768  
rebatipton@windermere.com



# 2220 Friar Tuck Court, Fort Collins, CO 80524 – All Levels



GROSS INTERNAL AREA  
Below Ground: 31 sq. ft, FLOOR 2: 917 sq. ft, FLOOR 3: 1168 sq. ft  
EXCLUDED AREAS: UNFINISHED BASEMENT: 821 sq. ft, GARAGE: 385 sq. ft, PATIO: 307 sq. ft,  
PORCH: 120 sq. ft, FIREPLACE: 6 sq. ft, OPEN TO BELOW: 49 sq. ft  
TOTAL: 2116 sq. ft  
MEASUREMENTS CALCULATED BY V1Photos.com ARE DEEMED HIGHLY RELIABLE BUT NOT GUARANTEED.



Disclaimer: Sizes and Dimensions are Approximate, Actual May Vary.



Reba Tipton  
970-215-6768  
rebatipton@windermere.com



Scan code  
for more  
property  
details

