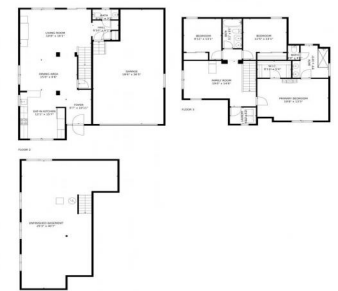


Murphy Creek on the GOLF COURSE !



23651 East Alabama Drive, Aurora, CO 80018 - All Floors



- Single Family
- 2887 SQFT
- 3 Beds
- 2/1 Baths
- 3 Car
- 0.13 Acre

PROPERTY DETAILS

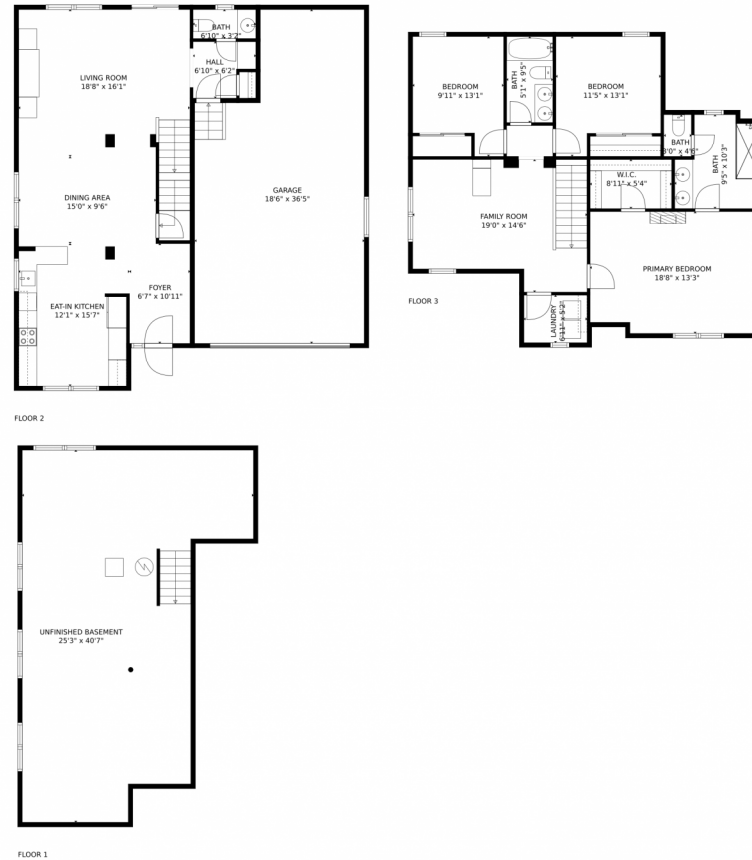
Welcome to this ideal home nestled in the master planned community, Murphy Creek. You'll love the open floorplan flooded with natural light, spacious entry, oversized eat-in kitchen, tall ceilings and laminate floors throughout the main floor. If you love a good sound system, the family room comes with surround sound pre-wire. Outside, enjoy the patio overlooking the golf course and gorgeous mountain views. The mud room is ideal with coat closet, bench for groceries, and a tucked away guest bathroom. Upstairs, you'll love the large primary suite with walk-in closet, newly remodeled bathroom featuring oversized walk-in shower and double sinks. The bonus room is perfect for an office, play room, or additional living space. You won't haul laundry up and down the stairs with the upstairs laundry complete with cabinet storage. The secondary bathroom features double sinks and plenty of vanity space. The garage has a tandem space for easy storage of another vehicle or those fun summer toys. The unfinished basement is waiting for your perfect design.



Eve Evans
720-299-8643
Eve@TheRealEveEvans.com
<https://www.TheRealEveEvans.com/>



23651 East Alabama Drive, Aurora, CO 80018 – All Floors



GROSS INTERNAL AREA
Below Ground: 0 sq. ft, FLOOR 2: 805 sq. ft, FLOOR 3: 1052 sq. ft
EXCLUDED AREAS: UNFINISHED BASEMENT: 784 sq. ft, GARAGE: 601 sq. ft
TOTAL: 1857 sq. ft
MEASUREMENTS CALCULATED BY V1Photos.com ARE DEEMED HIGHLY RELIABLE BUT NOT GUARANTEED.



Disclaimer: Sizes and Dimensions are Approximate, Actual May Vary.



Eve Evans

720-299-8643

Eve@TheRealEveEvans.com

<https://www.TheRealEveEvans.com/>



Scan code
for more
property
details

