



Single Family



3564 SQFT



7 Beds



3 Baths



4 Car



37.1 Acre

PROPERTY DETAILS

This stunning property offers the perfect blend of luxury and comfort. With 7 bedrooms and 3 full bathrooms, there is plenty of space for the whole family. The property features a 4-car garage, stainless steel appliances, hardwood floors, and a beautiful backyard with a deck and patio. The community is friendly and conveniently located. Don't miss out on this incredible opportunity!



Julio Quezada

720-882-3970

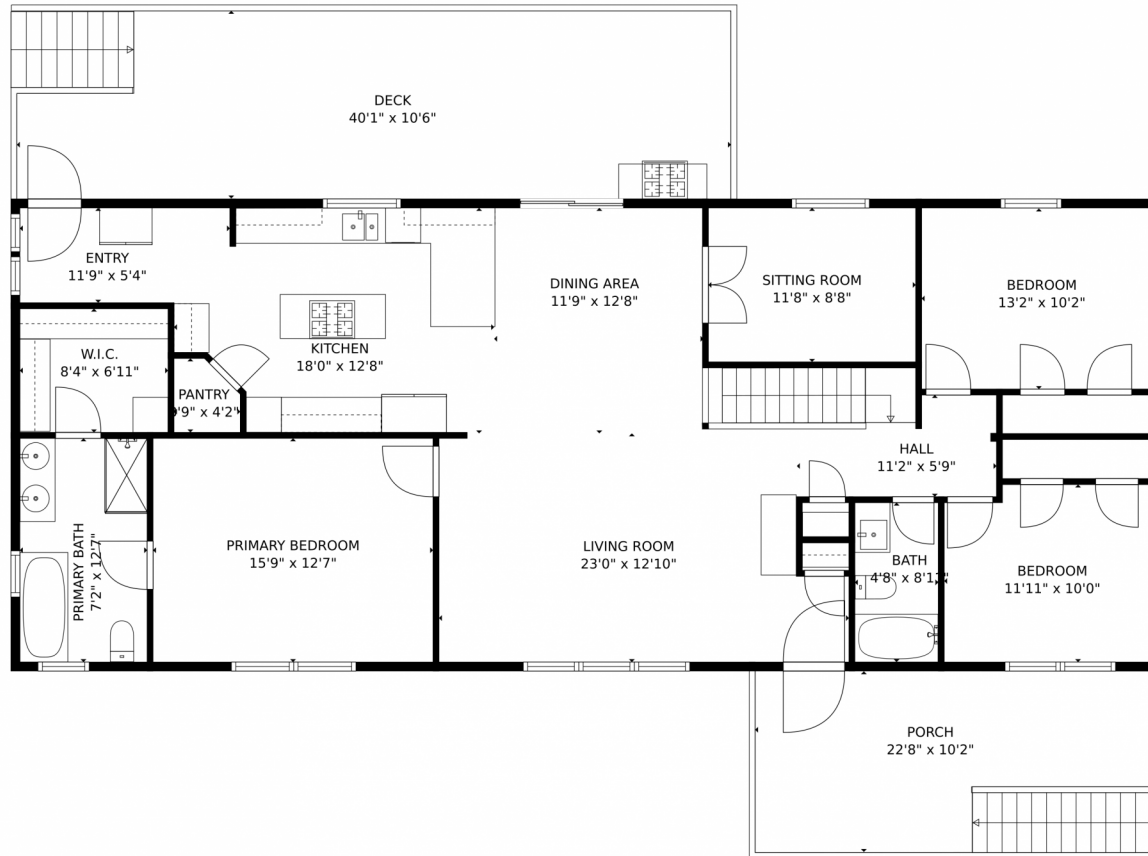
julio@thepristineproperties.com



Scan code
for more
property
details



48506 County Road 34, Bennett, CO 80102 – Main Level



GROSS INTERNAL AREA
Below Ground: 1253 sq. ft, FLOOR 2: 0 sq. ft, FLOOR 3: 1626 sq. ft
EXCLUDED AREAS: LAUNDRY: 114 sq. ft, ELECTRICAL ROOM: 126 sq. ft, PORCH: 1241 sq. ft,
GARAGE: 1643 sq. ft, DECK: 393 sq. ft
TOTAL: 2879 sq. ft
MEASUREMENTS CALCULATED BY V1Photos.COM ARE DEEMED HIGHLY RELIABLE BUT NOT GUARANTEED.



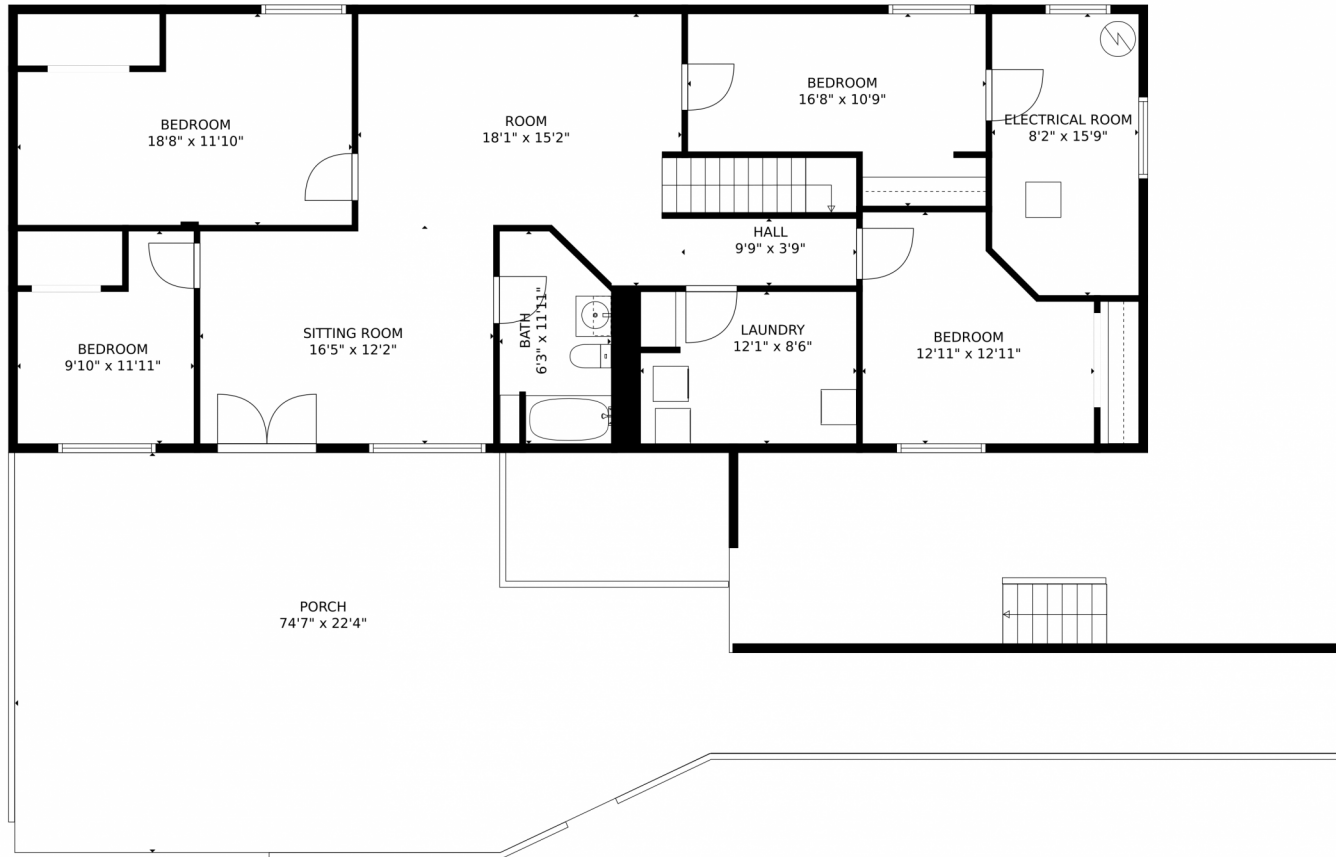
Disclaimer: Sizes and Dimensions are Approximate, Actual May Vary.



Julio Quezada
720-882-3970
julio@thepristineproperties.com



48506 County Road 34, Bennett, CO 80102 – Lower Level



GROSS INTERNAL AREA
Below Ground: 1253 sq. ft, FLOOR 2: 0 sq. ft, FLOOR 3: 1626 sq. ft
EXCLUDED AREAS: LAUNDRY: 114 sq. ft, ELECTRICAL ROOM: 126 sq. ft, PORCH: 1241 sq. ft,
GARAGE: 1643 sq. ft, DECK: 393 sq. ft
TOTAL: 2879 sq. ft
MEASUREMENTS CALCULATED BY V1Photos.COM ARE DEEMED HIGHLY RELIABLE BUT NOT GUARANTEED.



Disclaimer: Sizes and Dimensions are Approximate, Actual May Vary.



Julio Quezada
720-882-3970
julio@thepristineproperties.com



48506 County Road 34, Bennett, CO 80102 – Garage



GROSS INTERNAL AREA
Below Ground: 1253 sq. ft, FLOOR 2: 0 sq. ft, FLOOR 3: 1626 sq. ft
EXCLUDED AREAS: LAUNDRY: 114 sq. ft, ELECTRICAL ROOM: 126 sq. ft, PORCH: 1241 sq. ft,
GARAGE: 1643 sq. ft, DECK: 393 sq. ft
TOTAL: 2879 sq. ft
MEASUREMENTS CALCULATED BY V1Photos.com ARE DEEMED HIGHLY RELIABLE BUT NOT GUARANTEED.



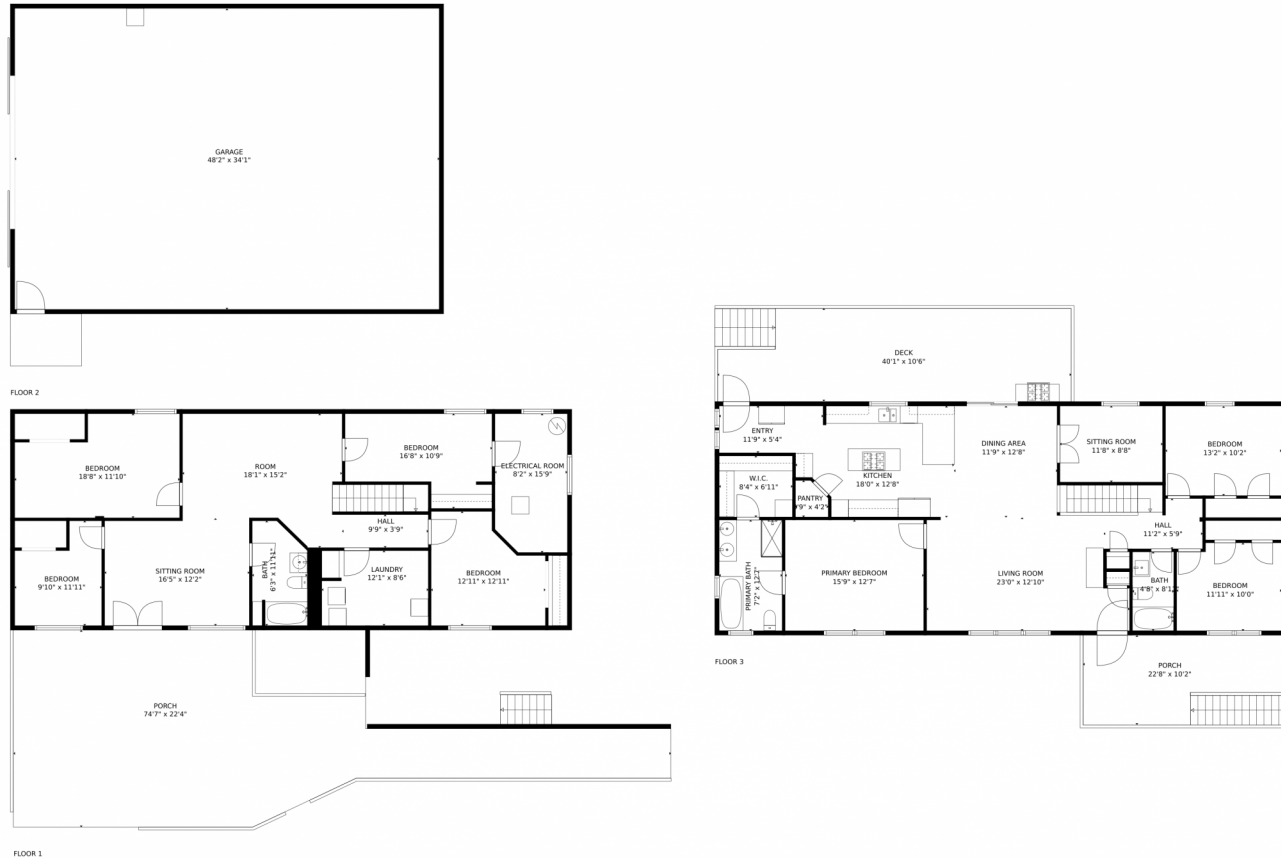
Disclaimer: Sizes and Dimensions are Approximate, Actual May Vary.



Julio Quezada
720-882-3970
julio@thepristineproperties.com



48506 County Road 34, Bennett, CO 80102 – all Levels



GROSS INTERNAL AREA
Below Ground: 1253 sq. ft, FLOOR 2: 0 sq. ft, FLOOR 3: 1626 sq. ft
EXCLUDED AREAS: LAUNDRY: 114 sq. ft, ELECTRICAL ROOM: 126 sq. ft, PORCH: 1241 sq. ft,
GARAGE: 1643 sq. ft, DECK: 393 sq. ft
TOTAL: 2879 sq. ft
MEASUREMENTS CALCULATED BY V1Photos.com ARE DEEMED HIGHLY RELIABLE BUT NOT GUARANTEED.



Disclaimer: Sizes and Dimensions are Approximate, Actual May Vary.



Julio Quezada
720-882-3970
julio@thepristineproperties.com



Scan code
for more
property
details

