




 Single Family

 1443 SQFT

 3 Beds

 1 Baths

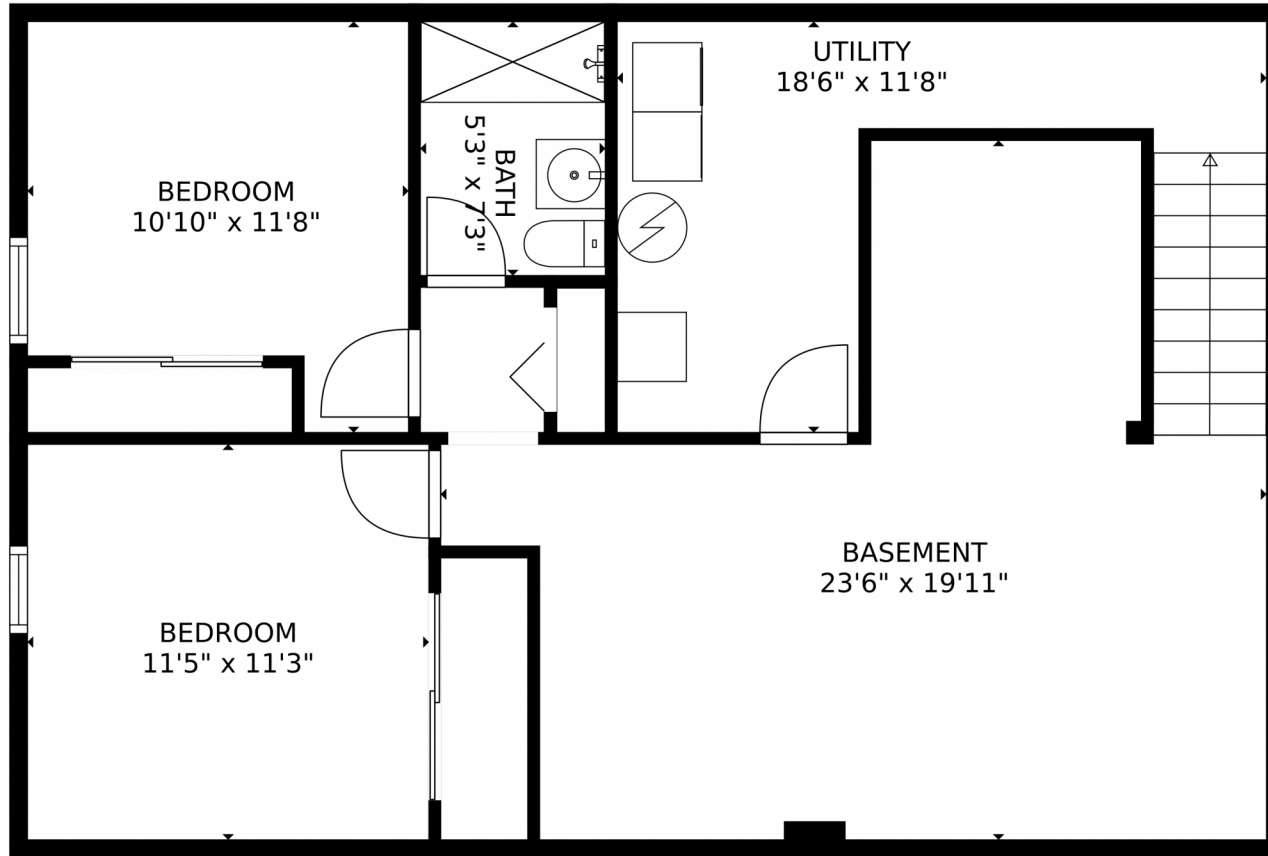


**Taylor Haas**  
303-665-7368  
taylorh@coloradorpm.com  
<https://www.coloradorpm.com/available-rental-properties-denver>



Scan code  
for more  
property  
details





GROSS INTERNAL AREA  
Below Ground: 677 sq. ft, FLOOR 2: 827 sq. ft  
EXCLUDED AREAS: UTILITY: 145 sq. ft, GARAGE: 532 sq. ft, PATIO: 207 sq. ft,  
PORCH: 16 sq. ft  
TOTAL: 1504 sq. ft  
MEASUREMENTS CALCULATED BY V1Photos.COM ARE DEEMED HIGHLY RELIABLE BUT NOT GUARANTEED.



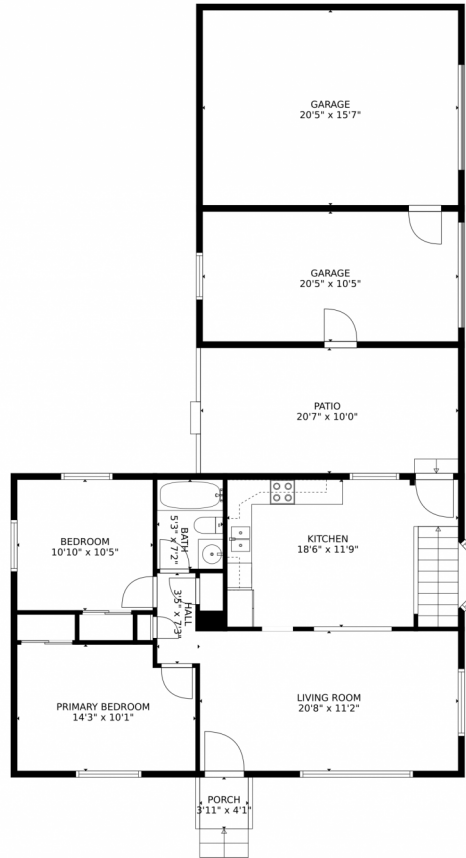
Disclaimer: Sizes and Dimensions are Approximate, Actual May Vary.



**Taylor Haas**  
303-665-7368  
taylorh@coloradorpm.com  
<https://www.coloradorpm.com/available-rental-properties-denver>



# 6610 Depew Court, Arvada, CO 80003 – Lower Level



GROSS INTERNAL AREA  
Below Ground: 677 sq. ft, FLOOR 2: 827 sq. ft  
EXCLUDED AREAS: UTILITY: 145 sq. ft, GARAGE: 532 sq. ft, PATIO: 207 sq. ft,  
PORCH: 16 sq. ft  
TOTAL: 1504 sq. ft  
MEASUREMENTS CALCULATED BY V1Photos.COM ARE DEEMED HIGHLY RELIABLE BUT NOT GUARANTEED.



Disclaimer: Sizes and Dimensions are Approximate, Actual May Vary.



**Taylor Haas**  
303-665-7368  
taylorh@coloradorpm.com  
<https://www.coloradorpm.com/available-rental-properties-denver>



Scan code  
for more  
property  
details

# 6610 Depew Court, Arvada, CO 80003 – All Levels



GROSS INTERNAL AREA  
Below Ground: 677 sq. ft, FLOOR 2: 827 sq. ft  
EXCLUDED AREAS: UTILITY: 145 sq. ft, GARAGE: 532 sq. ft, PATIO: 207 sq. ft,  
PORCH: 16 sq. ft  
TOTAL: 1504 sq. ft  
MEASUREMENTS CALCULATED BY V1Photos.COM ARE DEEMED HIGHLY RELIABLE BUT NOT GUARANTEED.



Disclaimer: Sizes and Dimensions are Approximate, Actual May Vary.



**Taylor Haas**  
303-665-7368  
taylorh@coloradorpm.com  
<https://www.coloradorpm.com/available-rental-properties-denver>

