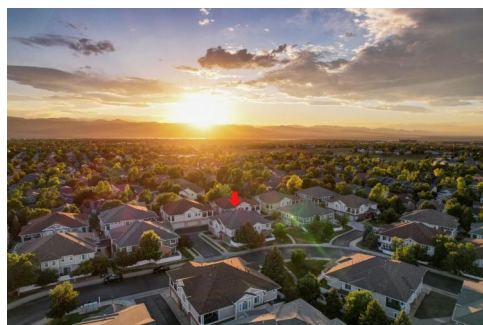
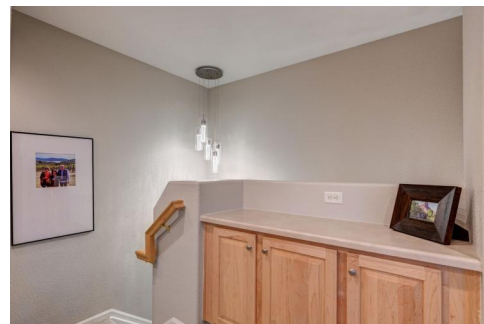




108 Whitehaven Circle
 Highlands Ranch, CO 80129
 COMMUNITY: Sundance at Indigo Hills

MLS # 5420006
 PRICE \$605,000



108 Whitehaven Circle, Littleton, CO 80129 - All Floors



Multi Family



1742 SQFT



3 Beds



3 Baths



2 Car



0.03 Acre

PROPERTY DETAILS

OPEN HOUSE SATURDAY, from August 12th, 10-2pm. Incredible Townhome in the Coveted Sundance at Indigo Hills neighborhood of Highlands Ranch! This private, move in ready town home is in amazing completely remodeled condition. Enjoy the rare 3 bedroom/3 bath open floor plan with high ceilings and abundant natural light. Beautiful new porcelain tile floors, new light fixtures, new interior paint, new carpet and high-end design choices through out the entire home. The large family room with newly installed and designed cozy fireplace flows into the nicely updated bright kitchen which has plenty of cabinet space, an enormous pantry, large eat-in dining space over looking the back patio. All stainless steel appliances are included. Extend your living area with the large private patio area, great for entertaining. This great floor plan also has a main floor bedroom/study with a full beautifully remodeled bath. Great for guests!! Upstairs you will find a relaxing get away Primary Suite with high-end updates throughout, including a wonderful soaking tub and large stand in shower. The secondary bedroom is large and light with a large walk-in closet with it's own en-suite. A small office/computer/crafting area is also available at the top of the stairs. Get ready to move in to this over 1700 sq. ft. home with large laundry and oversized garage and enjoy with minimal maintenance. Smart Doorbell, Thermostat and Garage. It also has all of what Highlands Ranch has to offer with it's 4



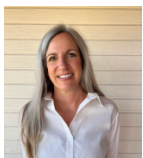
Jody Sheahan
 303-229-0577
 jodysheahan@comcast.net



Scan code
 for more
 property
 details



Rec Centers, Trails, Parks, Entertainment, Restaurants, Douglas County Schools, and convenient location.



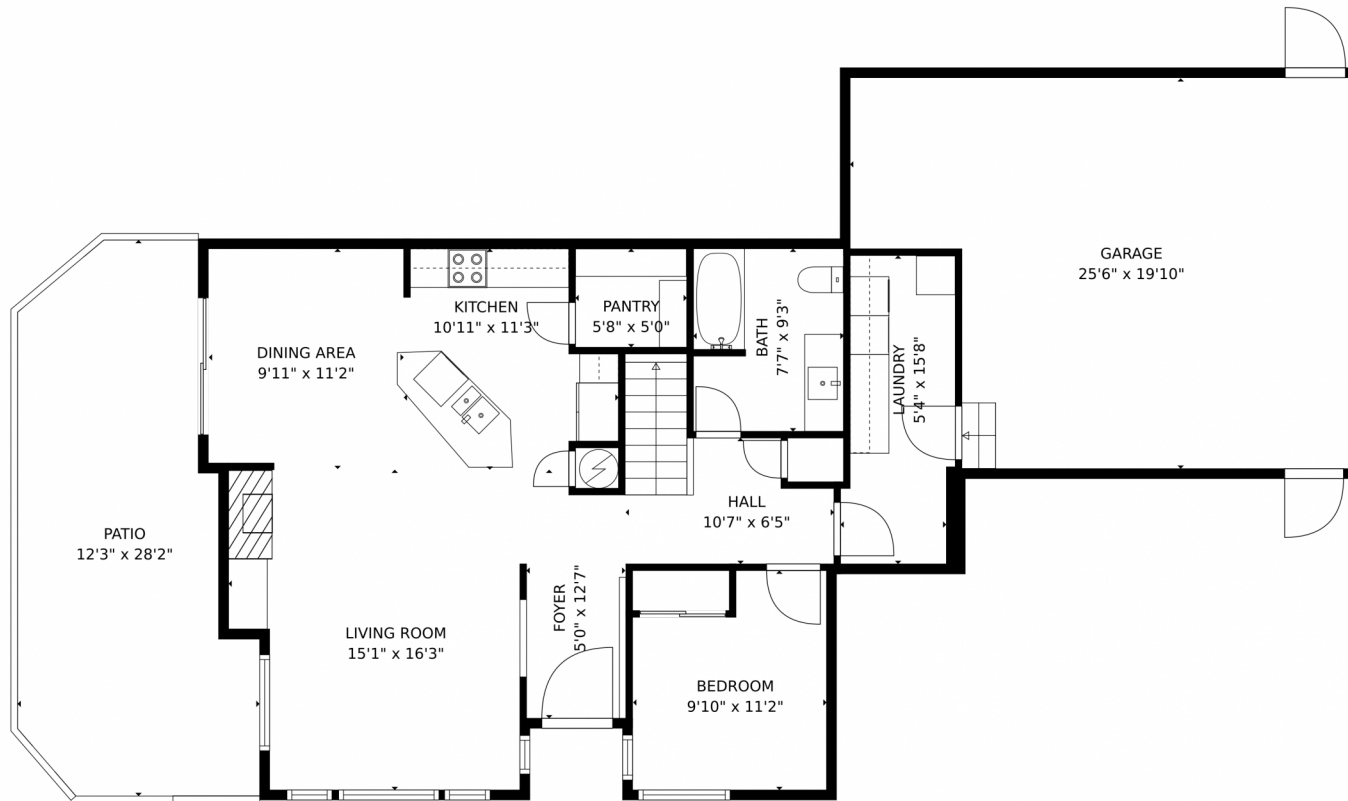
Jody Sheahan
303-229-0577
jodysheahan@comcast.net



Scan code
for more
property
details



108 Whitehaven Circle, Highlands Ranch, CO 80129 – 1st Floor



GROSS INTERNAL AREA
FLOOR 1: 894 sq. ft, FLOOR 2: 777 sq. ft
EXCLUDED AREAS: GARAGE: 443 sq. ft, PATIO: 279 sq. ft
TOTAL: 1671 sq. ft
MEASUREMENTS CALCULATED BY V1Photos.COM ARE DEEMED HIGHLY RELIABLE BUT NOT GUARANTEED.

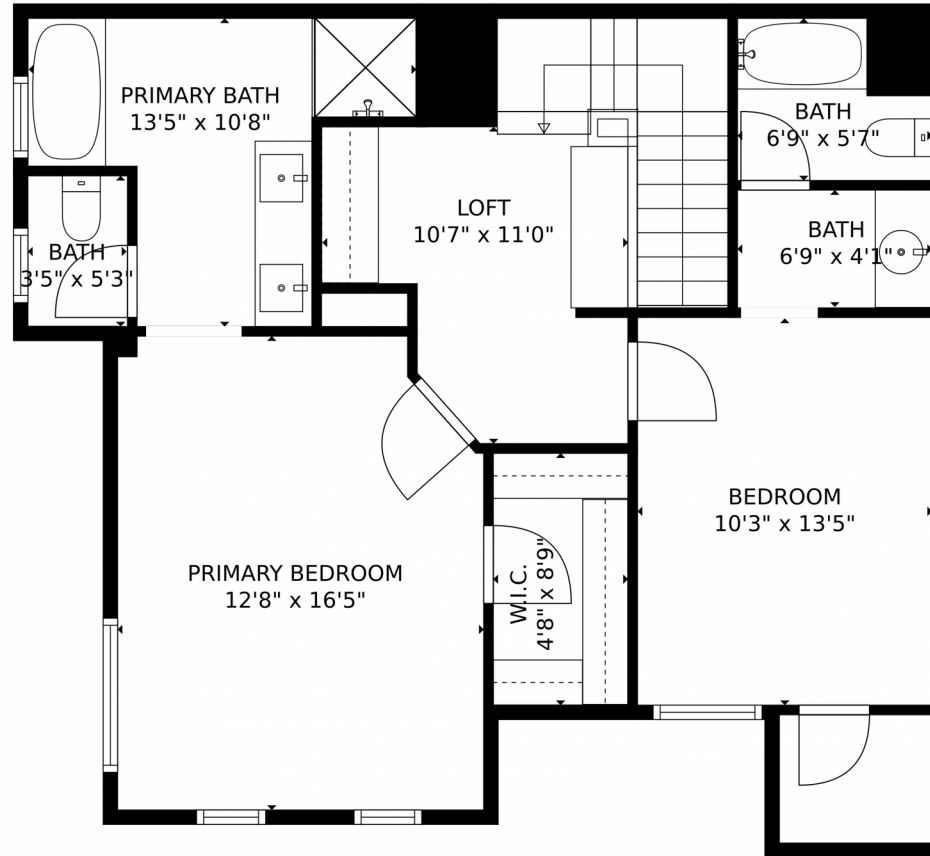
Disclaimer: Sizes and Dimensions are Approximate, Actual May Vary.



Jody Sheahan
303-229-0577
jodysheahan@comcast.net



108 Whitehaven Circle, Highlands Ranch, CO 80129 – 2nd Floor



GROSS INTERNAL AREA
FLOOR 1: 894 sq. ft, FLOOR 2: 777 sq. ft
EXCLUDED AREAS: GARAGE: 443 sq. ft, PATIO: 279 sq. ft
TOTAL: 1671 sq. ft
MEASUREMENTS CALCULATED BY V1Photos.COM ARE DEEMED HIGHLY RELIABLE BUT NOT GUARANTEED.



Disclaimer: Sizes and Dimensions are Approximate, Actual May Vary.



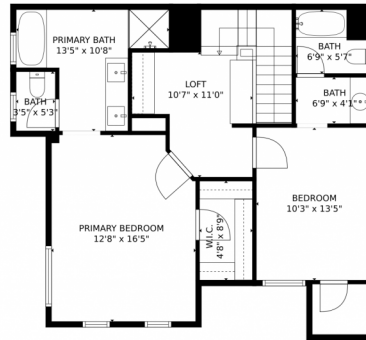
Jody Sheahan
303-229-0577
jodysheahan@comcast.net



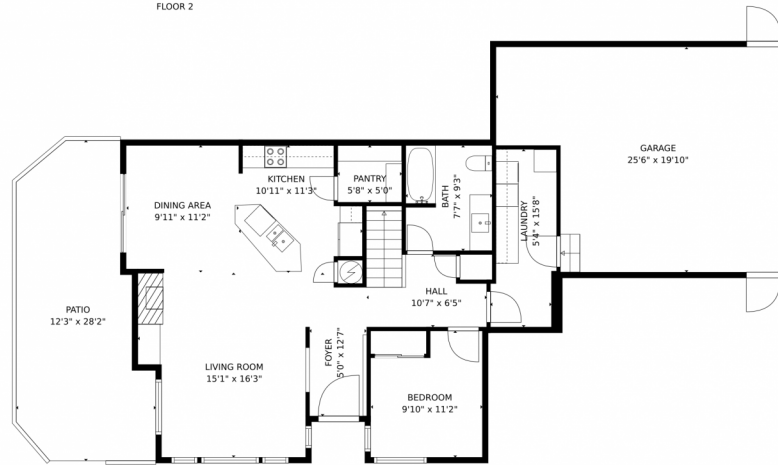
Scan code for more property details



108 Whitehaven Circle, Highlands Ranch, CO 80129 – All Floors



FLOOR 2



FLOOR 1

GROSS INTERNAL AREA
FLOOR 1: 894 sq. ft, FLOOR 2: 777 sq. ft
EXCLUDED AREAS: GARAGE: 443 sq. ft, PATIO: 279 sq. ft
TOTAL: 1671 sq. ft
MEASUREMENTS CALCULATED BY V1Photos.COM ARE DEEMED HIGHLY RELIABLE BUT NOT GUARANTEED.



Disclaimer: Sizes and Dimensions are Approximate, Actual May Vary.



Jody Sheahan
303-229-0577
jodysheahan@comcast.net

