



5010 Apache Creek Road
 Castle Rock, CO 80109
 COMMUNITY: The Meadows

MLS # 8255061
 PRICE \$710,000



Single Family 3100 SQFT 5 Beds 3/1 Baths 3 Car 0.19 Acre

PROPERTY DETAILS

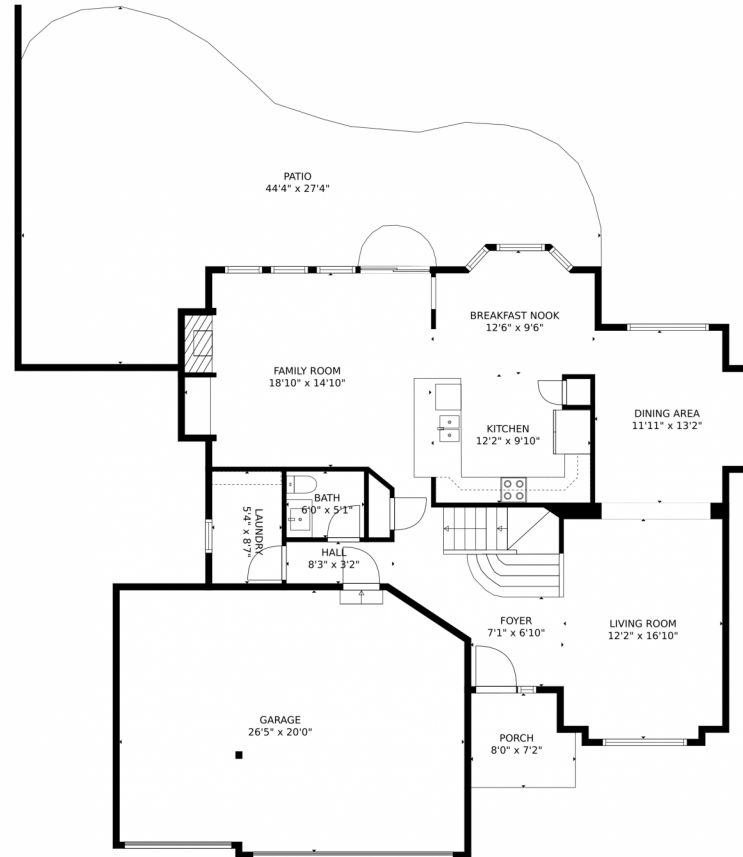
Stunning 2-Story on Fabulous Lot in The Meadows, Pride of Ownership Throughout, Bright and Open Floor Plan, Lovely Kitchen Featuring Newly Painted Cabinets, Stainless Steel Appliances, Granite Tile Countertops, Spacious Eat-In Area in Addition to the Home's Beautiful Formal Dining Room, Cozy Gas Fireplace Located in Family Room, Custom Interior Paint, Master Bedroom Showcases Vaulted Ceiling, Fabulous Five-Piece Master Bath. All Four Bedrooms Located on Upper Level, Spacious basement has 5th bedroom/2nd living area. Awesome for entertaining, mother-in-law space or family hangout! New Interior paint throughout. Fantastic Fenced Yard, Spacious Patio Area, Established Landscaping, Front/Back Sprinkler System, Three Car Garage. Residents enjoy the neighborhood's many parks to include Butterfield's new universally designed/sensory-rich Possibilities Playground, walking/biking trails and Castle Rock's fabulous restaurants and shopping at the Promenade just minutes away. Close proximity to numerous K-12 schools, ACC/CSU college campus, hospital, restaurants, Golf Course, Outlets at Castle Rock, & more. Easy access to I-25, DTC, Denver, Colorado Springs.



Jody Sheahan
 303-229-0577
 jodysheahan@comcast.net



5010 Apache Creek Road, Castle Rock, CO 80109 — Main Level



GROSS INTERNAL AREA
Below Ground: 495 sq. ft, FLOOR 2: 1128 sq. ft, FLOOR 3: 1203 sq. ft
EXCLUDED AREAS: ELECTRICAL ROOM: 29 sq. ft, GARAGE: 510 sq. ft, PATIO: 689 sq. ft,
PORCH: 53 sq. ft, OPEN TO BELOW: 264 sq. ft
TOTAL: 2826 sq. ft
MEASUREMENTS CALCULATED BY V1Photos.com ARE DEEMED HIGHLY RELIABLE BUT NOT GUARANTEED.



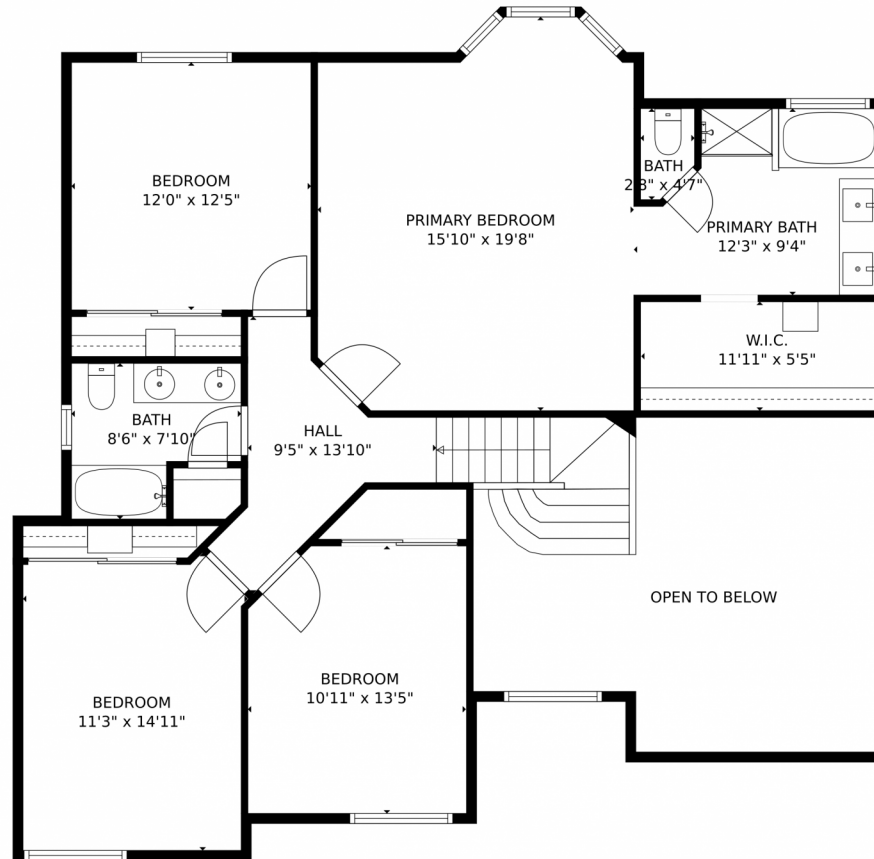
Disclaimer: Sizes and Dimensions are Approximate, Actual May Vary.



Jody Sheahan
303-229-0577
jodysheahan@comcast.net



5010 Apache Creek Road, Castle Rock, CO 80109 — Upper Level



GROSS INTERNAL AREA
Below Ground: 495 sq. ft, FLOOR 2: 1128 sq. ft, FLOOR 3: 1203 sq. ft
EXCLUDED AREAS: ELECTRICAL ROOM: 29 sq. ft, GARAGE: 510 sq. ft, PATIO: 689 sq. ft,
PORCH: 53 sq. ft, OPEN TO BELOW: 264 sq. ft
TOTAL: 2826 sq. ft
MEASUREMENTS CALCULATED BY V1Photos.COM ARE DEEMED HIGHLY RELIABLE BUT NOT GUARANTEED.



Disclaimer: Sizes and Dimensions are Approximate, Actual May Vary.

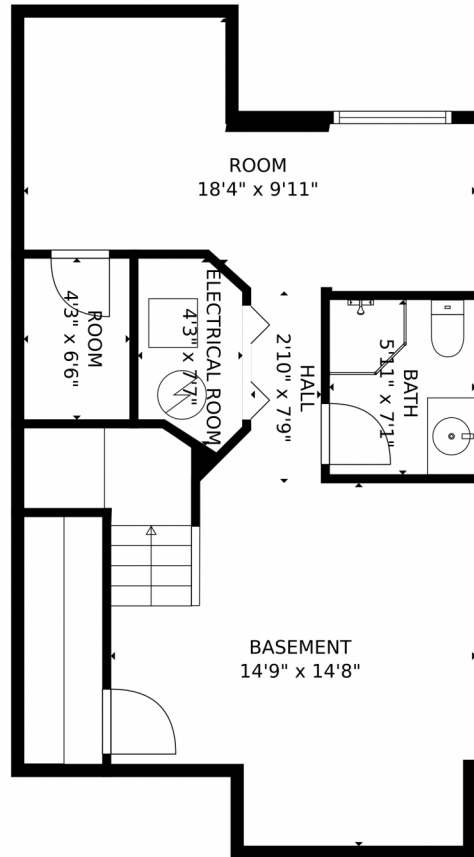


Jody Sheahan
303-229-0577
jodysheahan@comcast.net



Scan code
for more
property
details

5010 Apache Creek Road, Castle Rock, CO 80109 — Lower Level



GROSS INTERNAL AREA
Below Ground: 495 sq. ft, FLOOR 2: 1128 sq. ft, FLOOR 3: 1203 sq. ft
EXCLUDED AREAS: ELECTRICAL ROOM: 29 sq. ft, GARAGE: 510 sq. ft, PATIO: 689 sq. ft,
PORCH: 53 sq. ft, OPEN TO BELOW: 264 sq. ft
TOTAL: 2826 sq. ft
MEASUREMENTS CALCULATED BY V1Photos.com ARE DEEMED HIGHLY RELIABLE BUT NOT GUARANTEED.



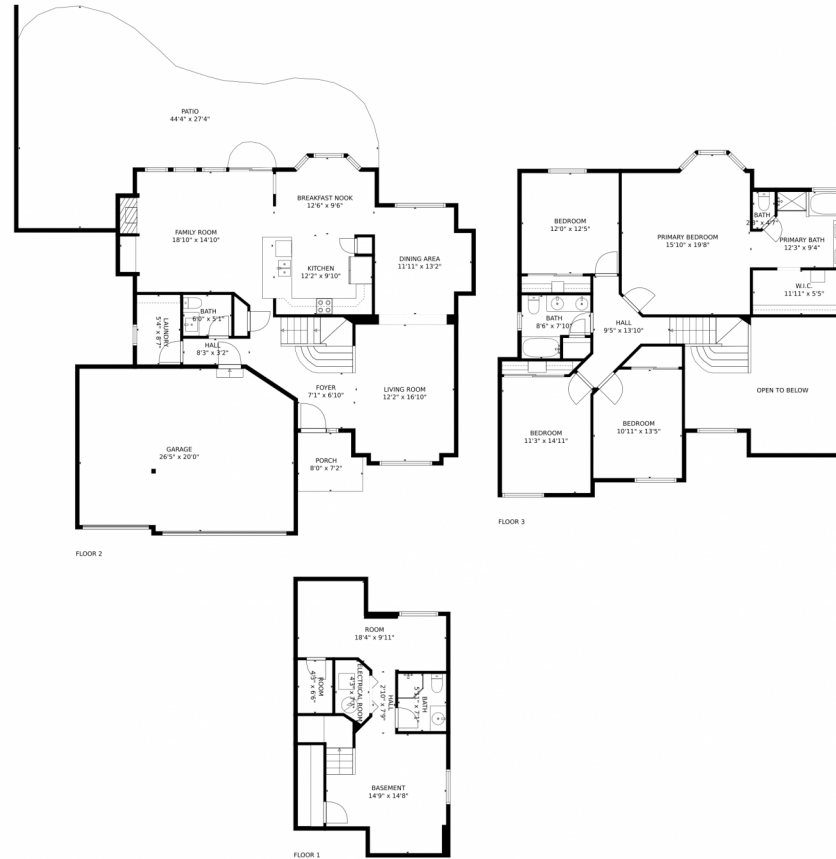
Disclaimer: Sizes and Dimensions are Approximate, Actual May Vary.



Jody Sheahan
303-229-0577
jodysheahan@comcast.net



5010 Apache Creek Road, Castle Rock, CO 80109 — All Levels



GROSS INTERNAL AREA
Below Ground: 495 sq. ft, FLOOR 2: 1128 sq. ft, FLOOR 3: 1203 sq. ft
EXCLUDED AREAS: ELECTRICAL ROOM: 29 sq. ft, GARAGE: 510 sq. ft, PATIO: 689 sq. ft,
PORCH: 53 sq. ft, OPEN TO BELOW: 264 sq. ft
TOTAL: 2826 sq. ft
MEASUREMENTS CALCULATED BY V1Photos.COM ARE DEEMED HIGHLY RELIABLE BUT NOT GUARANTEED.



Disclaimer: Sizes and Dimensions are Approximate, Actual May Vary.



Jody Sheahan
303-229-0577
jodysheahan@comcast.net

