



 Single Family  5154 SQFT  5 Beds  4/1 Baths  3 Car  1.28 Acre

PROPERTY DETAILS

Welcome home! Enjoy mountain views and gorgeous sunsets year around. Situated on a large flat 55+ Sq. Ft. corner lot in the coveted, private, Chapparal neighborhood, this traditional two-story 5 bedroom home features beautiful vaulted ceilings, custom molding, new interior paint, updates, and amazing mountain views of the front range. When you enter the home, you will be welcomed by the large foyer and grand staircase. The main floor has large beautiful living spaces throughout. Enjoy the large formal double sided fireplace between the living and dining room space. The kitchen is updated with large granite island, painted cabinetry, and double oven. All stainless appliances are included. It opens up to a large eat in area, huge family room with beautiful windows, large newer fireplace and walks out to the large wrap around deck overlooking the expansive yard, sports court, water feature, and mountain views. The upstairs primary bedroom boasts with an on-suite 5-piece bath, large walk in closet, cozy sitting area with a double sided fireplace, updated Primary bathroom and amazing mountain views. The other large secondary bedrooms upstairs include one with it's own en-suite bathroom and the other 2 are separated with Jack and Jill bath. The large upstairs laundry with sink, counter space and plenty of storage space is an added bonus!!! The walkout basement is perfect for entertaining with plenty of room for games, a home gym, theatre and more. Enjoy the 5th bedroom



Jody Sheahan
303-229-0577
jodysheahan@comcast.net



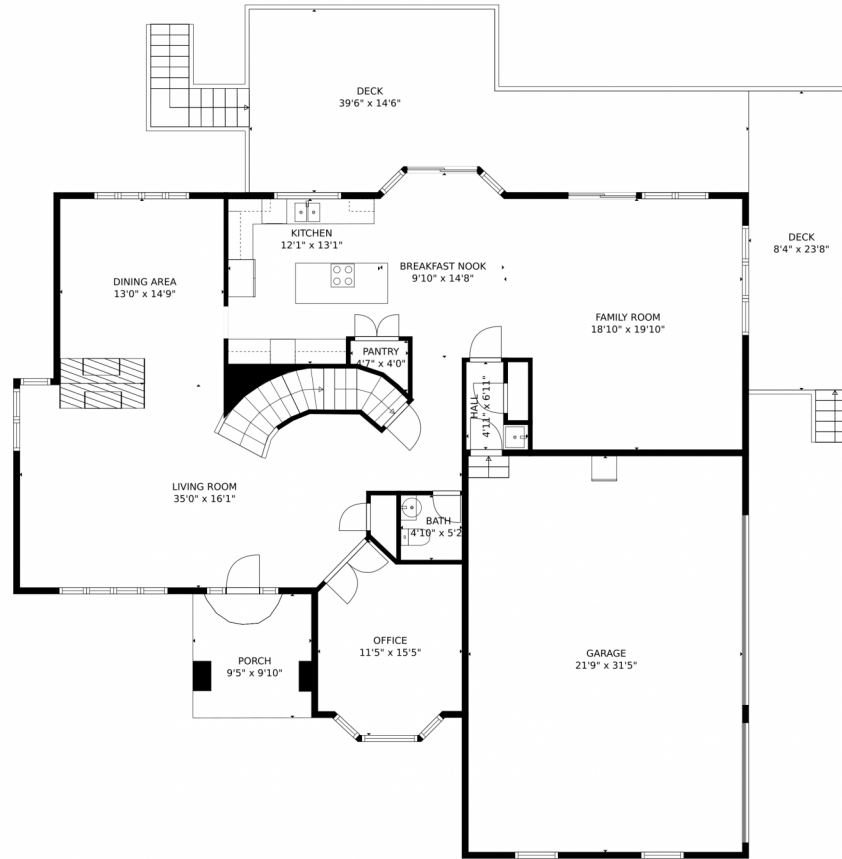
and 3/4 bath for family and guests. The Chapparal neighborhood offers a pool and tennis courts all year around and is located in the Cherry Creek School District. Make your home close to all the amenities south Denver has to offer and enjoy the land, space and privacy!



Jody Sheahan
303-229-0577
jodysheahan@comcast.net



19193 E Geddes Avenue, Centennial, CO 80016 – Main Level



GROSS INTERNAL AREA
Below Ground: 1335 sq. ft, FLOOR 2: 1613 sq. ft, FLOOR 3: 1681 sq. ft
EXCLUDED AREAS: UTILITY: 250 sq. ft, PATIO: 216 sq. ft, GARAGE: 681 sq. ft,
PORCH: 92 sq. ft, DECK: 626 sq. ft, OPEN TO BELOW: 376 sq. ft
TOTAL: 4629 sq. ft
MEASUREMENTS CALCULATED BY V1Photos.com ARE DEEMED HIGHLY RELIABLE BUT NOT GUARANTEED.



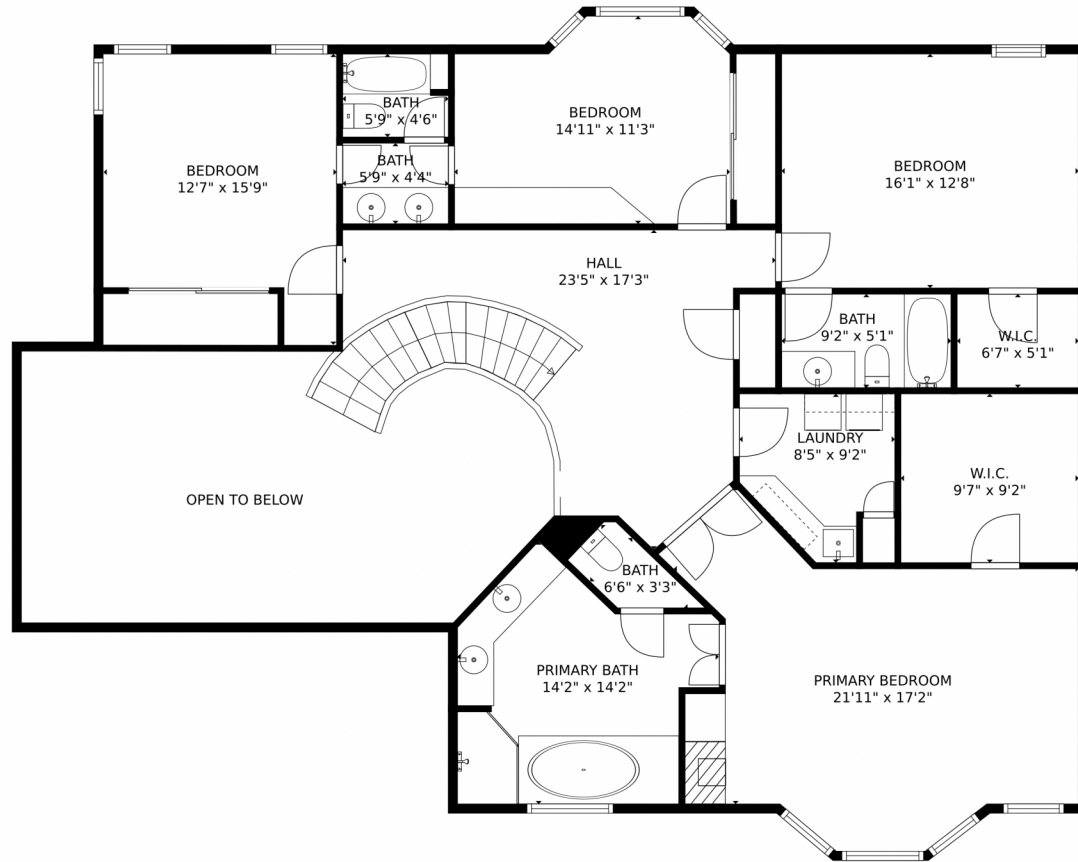
Disclaimer: Sizes and Dimensions are Approximate, Actual May Vary.



Jody Sheahan
303-229-0577
jodysheahan@comcast.net



19193 E Geddes Avenue, Centennial, CO 80016 – Second Level



GROSS INTERNAL AREA
Below Ground: 1335 sq. ft, FLOOR 2: 1613 sq. ft, FLOOR 3: 1681 sq. ft
EXCLUDED AREAS: UTILITY: 250 sq. ft, PATIO: 216 sq. ft, GARAGE: 681 sq. ft,
PORCH: 92 sq. ft, DECK: 626 sq. ft, OPEN TO BELOW: 376 sq. ft
TOTAL: 4629 sq. ft
MEASUREMENTS CALCULATED BY V1Photos.com ARE DEEMED HIGHLY RELIABLE BUT NOT GUARANTEED.



Disclaimer: Sizes and Dimensions are Approximate, Actual May Vary.



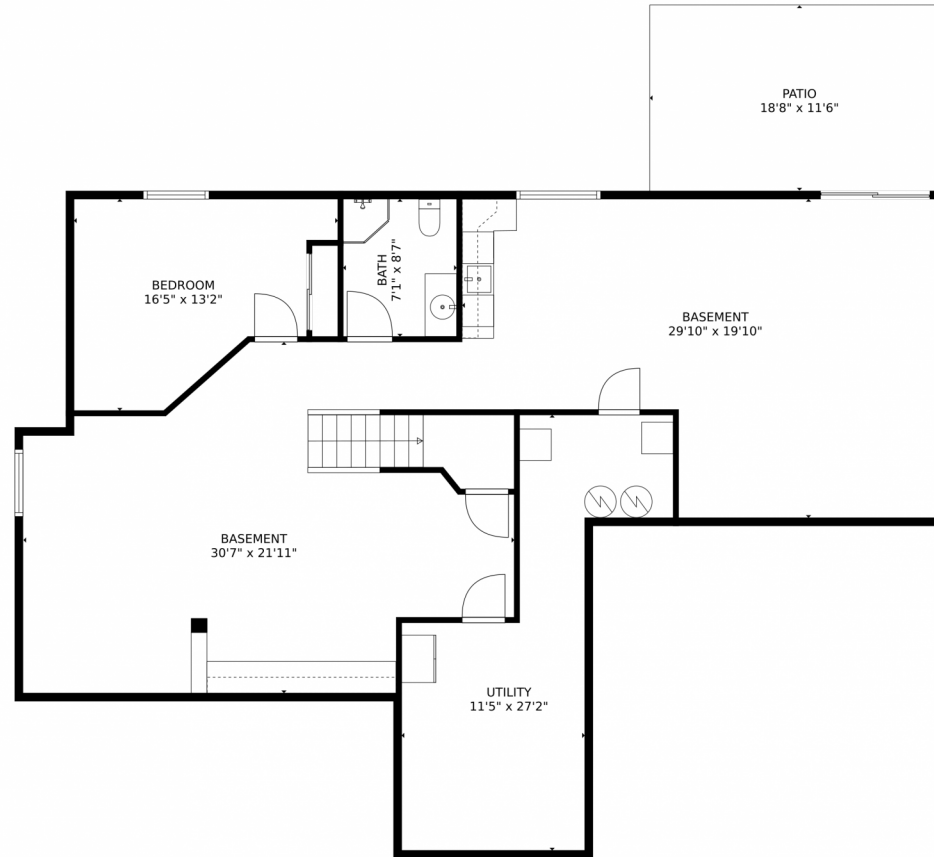
Jody Sheahan
303-229-0577
jodysheahan@comcast.net



Scan code
for more
property
details



19193 E Geddes Avenue, Centennial, CO 80016 – Basement



GROSS INTERNAL AREA
Below Ground: 1335 sq. ft, FLOOR 2: 1613 sq. ft, FLOOR 3: 1681 sq. ft
EXCLUDED AREAS: UTILITY: 250 sq. ft, PATIO: 216 sq. ft, GARAGE: 681 sq. ft,
PORCH: 92 sq. ft, DECK: 626 sq. ft, OPEN TO BELOW: 376 sq. ft
TOTAL: 4629 sq. ft
MEASUREMENTS CALCULATED BY V1Photos.COM ARE DEEMED HIGHLY RELIABLE BUT NOT GUARANTEED.



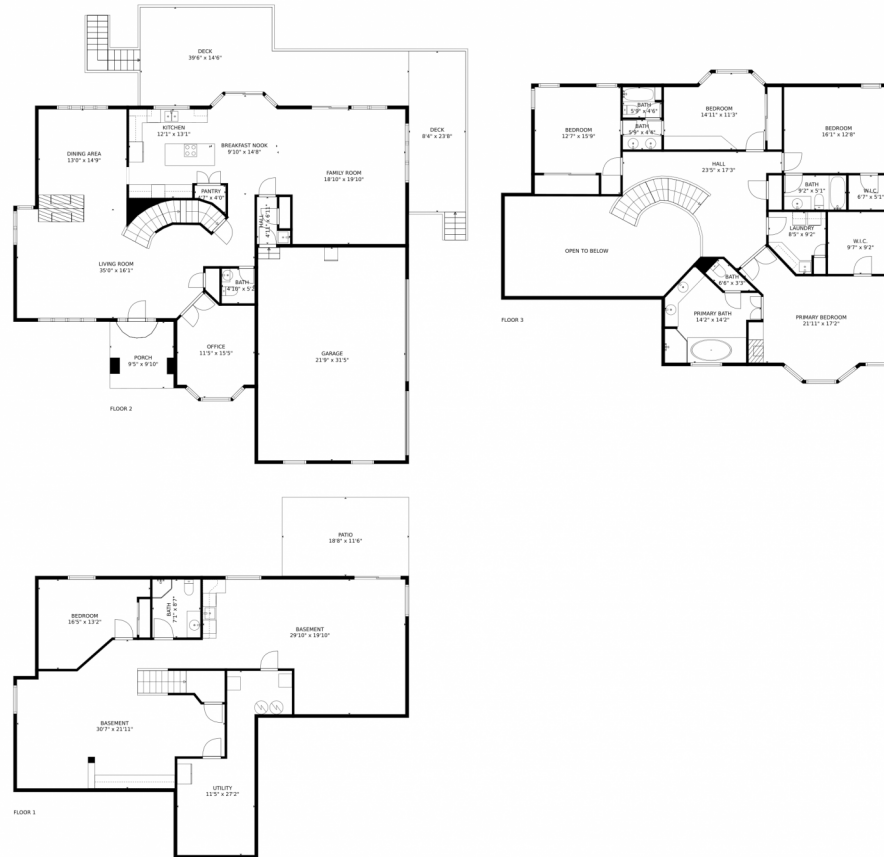
Disclaimer: Sizes and Dimensions are Approximate, Actual May Vary.



Jody Sheahan
303-229-0577
jodysheahan@comcast.net



19193 E Geddes Avenue, Centennial, CO 80016 – All Levels



GROSS INTERNAL AREA
Below Ground: 1335 sq. ft, FLOOR 2: 1613 sq. ft, FLOOR 3: 1681 sq. ft
EXCLUDED AREAS: UTILITY: 250 sq. ft, PATIO: 216 sq. ft, GARAGE: 681 sq. ft,
PORCH: 92 sq. ft, DECK: 626 sq. ft, OPEN TO BELOW: 376 sq. ft
TOTAL: 4629 sq. ft
MEASUREMENTS CALCULATED BY V1Photos.COM ARE DEEMED HIGHLY RELIABLE BUT NOT GUARANTEED.



Disclaimer: Sizes and Dimensions are Approximate, Actual May Vary.



Jody Sheahan
303-229-0577
jodysheahan@comcast.net

