



1245 N York Street
 Denver, CO 80206
 COMMUNITY: Cheesman Park



Single Family



2999 SQFT



5 Beds



2/1 Baths



3 Car



0.1 Acre



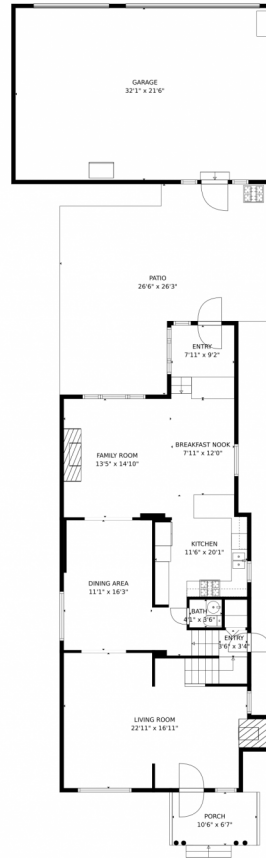
Nate Biggs
 303-257-6495
 nathanmbiggs@gmail.com



Scan code
 for more
 property
 details



1245 N York Street, Denver, CO 80206 – Main Level



GROSS INTERNAL AREA
Below Ground: 172 sq. ft, FLOOR 2: 1157 sq. ft, FLOOR 3: 921 sq. ft, FLOOR 4: 475 sq. ft
EXCLUDED AREAS: ELECTRICAL ROOM: 234 sq. ft, PORCH: 70 sq. ft, PATIO: 543 sq. ft,
GARAGE: 689 sq. ft, FIREPLACE: 9 sq. ft, BALCONY: 141 sq. ft
TOTAL: 2725 sq. ft
MEASUREMENTS CALCULATED BY V1Photos.com ARE DEEMED HIGHLY RELIABLE BUT NOT GUARANTEED.

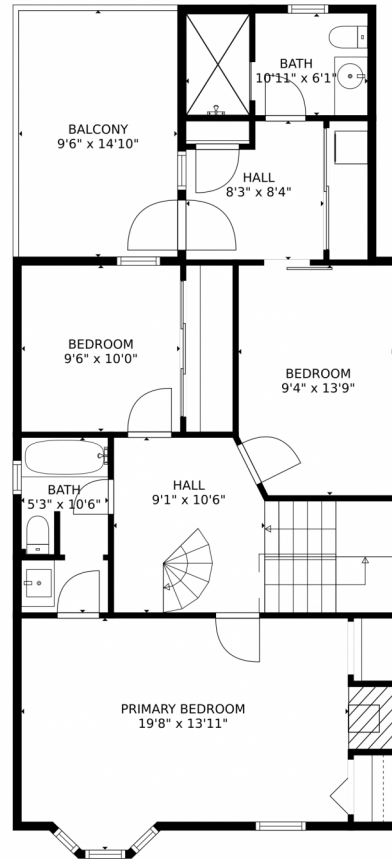


Disclaimer: Sizes and Dimensions are Approximate, Actual May Vary.



Nate Biggs
303-257-6495
nathanmbiggs@gmail.com





GROSS INTERNAL AREA
Below Ground: 172 sq. ft, FLOOR 2: 1157 sq. ft, FLOOR 3: 921 sq. ft, FLOOR 4: 475 sq. ft
EXCLUDED AREAS: ELECTRICAL ROOM: 234 sq. ft, PORCH: 70 sq. ft, PATIO: 543 sq. ft,
GARAGE: 689 sq. ft, FIREPLACE: 9 sq. ft, BALCONY: 141 sq. ft
TOTAL: 2725 sq. ft
MEASUREMENTS CALCULATED BY V1Photos.com ARE DEEMED HIGHLY RELIABLE BUT NOT GUARANTEED.

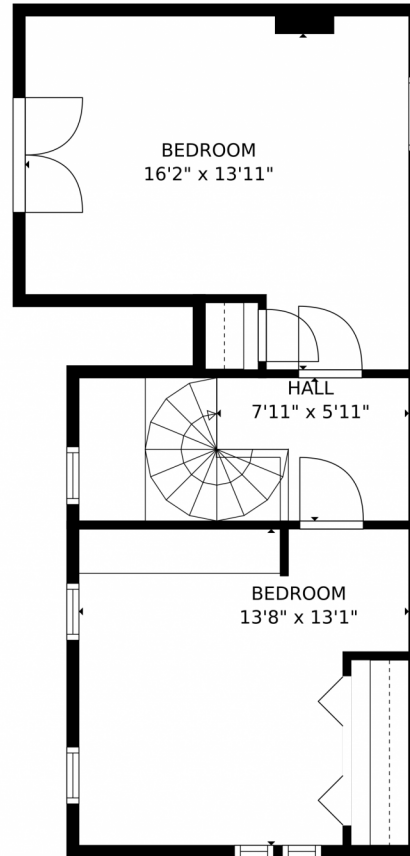


Disclaimer: Sizes and Dimensions are Approximate, Actual May Vary.



Nate Biggs
303-257-6495
nathanmbiggs@gmail.com





GROSS INTERNAL AREA
Below Ground: 172 sq. ft, FLOOR 2: 1157 sq. ft, FLOOR 3: 921 sq. ft, FLOOR 4: 475 sq. ft
EXCLUDED AREAS: ELECTRICAL ROOM: 234 sq. ft, PORCH: 70 sq. ft, PATIO: 543 sq. ft,
GARAGE: 689 sq. ft, FIREPLACE: 9 sq. ft, BALCONY: 141 sq. ft
TOTAL: 2725 sq. ft
MEASUREMENTS CALCULATED BY V1Photos.com ARE DEEMED HIGHLY RELIABLE BUT NOT GUARANTEED.

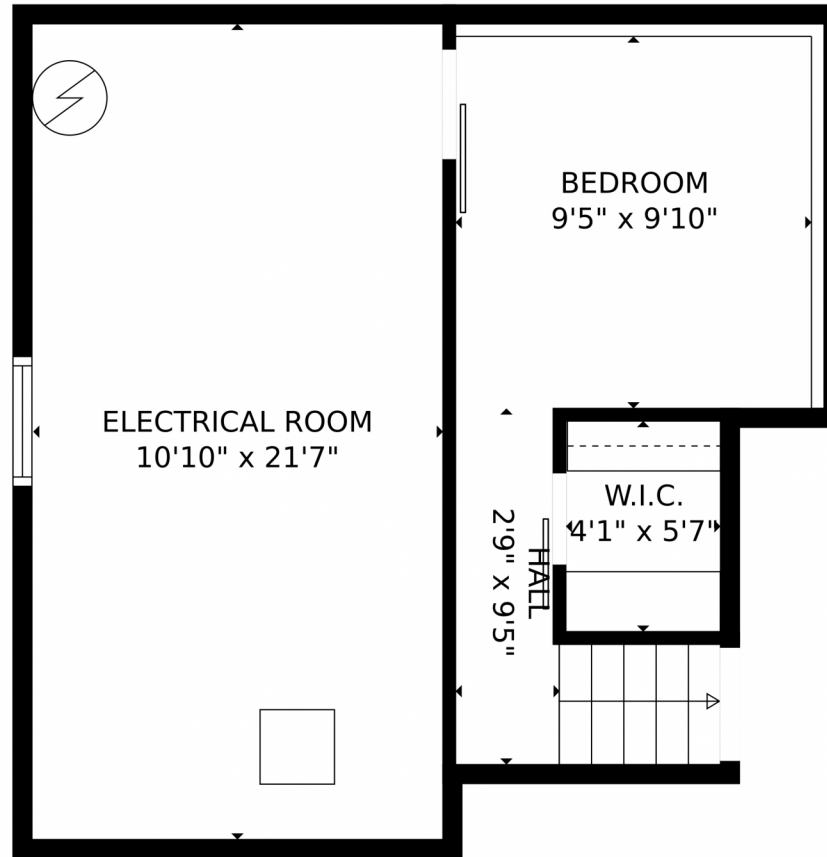


Disclaimer: Sizes and Dimensions are Approximate, Actual May Vary.



Nate Biggs
303-257-6495
nathanmbiggs@gmail.com





GROSS INTERNAL AREA
Below Ground: 172 sq. ft, FLOOR 2: 1157 sq. ft, FLOOR 3: 921 sq. ft, FLOOR 4: 475 sq. ft
EXCLUDED AREAS: ELECTRICAL ROOM: 234 sq. ft, PORCH: 70 sq. ft, PATIO: 543 sq. ft,
GARAGE: 689 sq. ft, FIREPLACE: 9 sq. ft, BALCONY: 141 sq. ft
TOTAL: 2725 sq. ft
MEASUREMENTS CALCULATED BY V1Photos.com ARE DEEMED HIGHLY RELIABLE BUT NOT GUARANTEED.

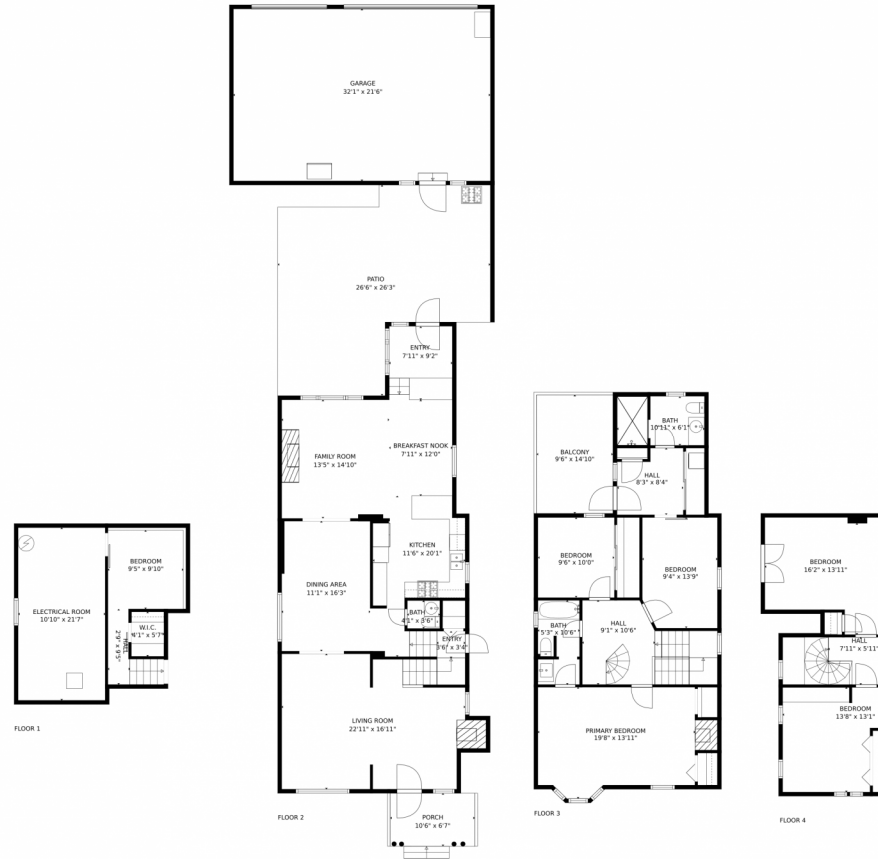
Disclaimer: Sizes and Dimensions are Approximate, Actual May Vary.



Nate Biggs
303-257-6495
nathanmbiggs@gmail.com



1245 N York Street, Denver, CO 80206 – All Levels



GROSS INTERNAL AREA
Below Ground: 172 sq. ft, FLOOR 2: 1157 sq. ft, FLOOR 3: 921 sq. ft, FLOOR 4: 475 sq. ft
EXCLUDED AREAS: ELECTRICAL ROOM: 234 sq. ft, PORCH: 70 sq. ft, PATIO: 543 sq. ft,
GARAGE: 689 sq. ft, FIREPLACE: 9 sq. ft, BALCONY: 141 sq. ft
TOTAL: 2725 sq. ft
MEASUREMENTS CALCULATED BY V1Photos.COM ARE DEEMED HIGHLY RELIABLE BUT NOT GUARANTEED.



Disclaimer: Sizes and Dimensions are Approximate, Actual May Vary.



Nate Biggs
303-257-6495
nathanmbiggs@gmail.com

