




 Single Family

 1848 SQFT

 4 Beds

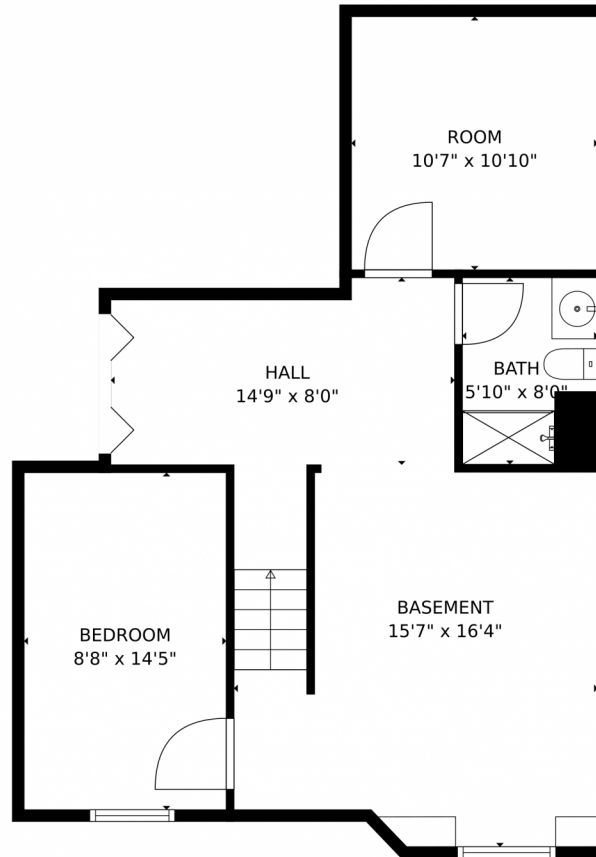
 3/1 Baths



Taylor Haas
303-665-7368
taylorh@coloradorpm.com
<https://www.coloradorpm.com/available-rental-properties-denver>



2070 South Xenia Way, Denver, CO 80231 – Lower Level



GROSS INTERNAL AREA
Below Ground: 522 sq. ft. FLOOR 2: 707 sq. ft. FLOOR 3: 704 sq. ft.
EXCLUDED AREAS: ROOM: 115 sq. ft. DECK: 81 sq. ft. GARAGE: 355 sq. ft.
FIREPLACE: 1 sq. ft. OPEN TO BELOW: 219 sq. ft.
TOTAL: 1933 sq. ft.
MEASUREMENTS CALCULATED BY V1Photos.COM ARE DEEMED HIGHLY RELIABLE BUT NOT GUARANTEED.



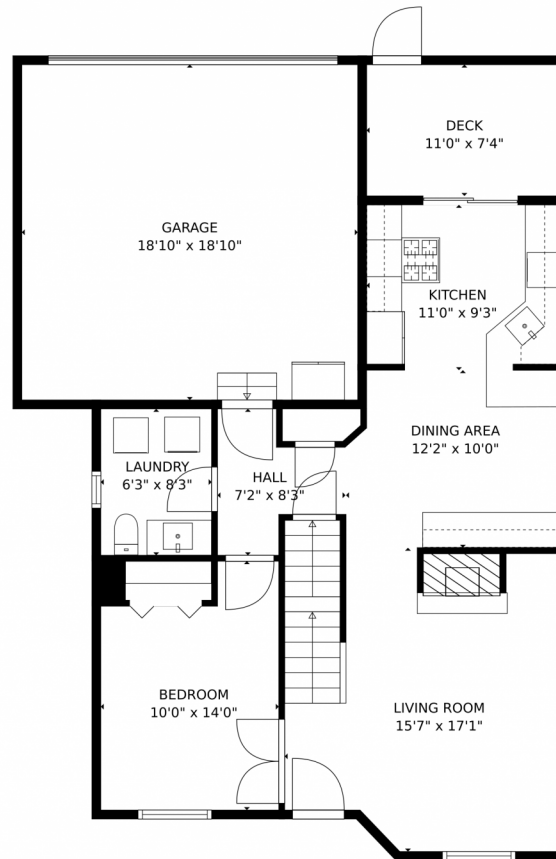
Disclaimer: Sizes and Dimensions are Approximate, Actual May Vary.



Taylor Haas
303-665-7368
taylorh@coloradorpm.com
<https://www.coloradorpm.com/available-rental-properties-denver>



2070 South Xenia Way, Denver, CO 80231 – Main Level



GROSS INTERNAL AREA
Below Ground: 522 sq. ft. FLOOR 2: 707 sq. ft. FLOOR 3: 704 sq. ft.
EXCLUDED AREAS: ROOM: 115 sq. ft. DECK: 81 sq. ft. GARAGE: 355 sq. ft.
FIREPLACE: 1 sq. ft. OPEN TO BELOW: 219 sq. ft.
TOTAL: 1933 sq. ft.
MEASUREMENTS CALCULATED BY V1Photos.COM ARE DEEMED HIGHLY RELIABLE BUT NOT GUARANTEED.



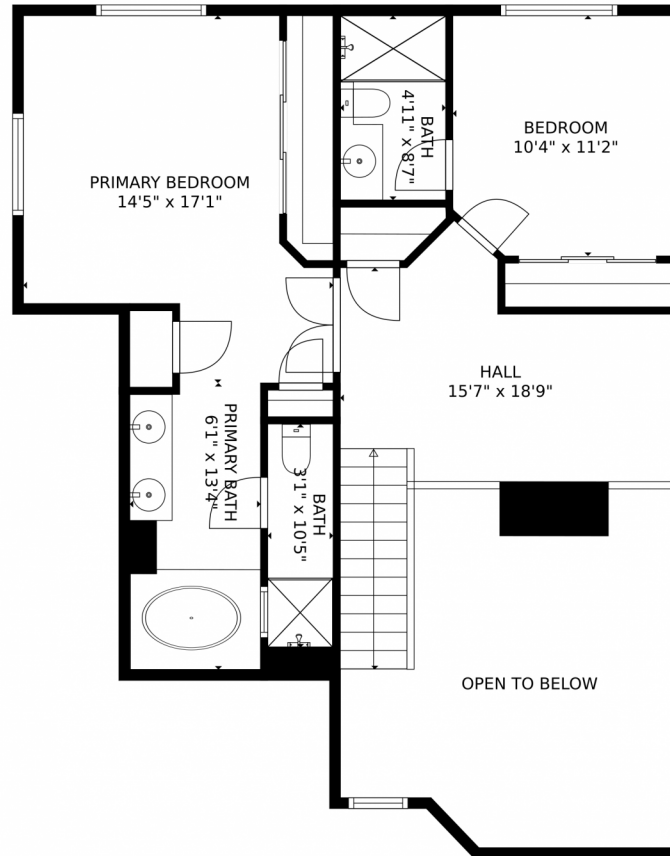
Disclaimer: Sizes and Dimensions are Approximate, Actual May Vary.



Taylor Haas
303-665-7368
taylorh@coloradorpm.com
<https://www.coloradorpm.com/available-rental-properties-denver>



2070 South Xenia Way, Denver, CO 80231 – Second Level



GROSS INTERNAL AREA
Below Ground: 522 sq. ft. FLOOR 2: 707 sq. ft. FLOOR 3: 704 sq. ft.
EXCLUDED AREAS: ROOM: 115 sq. ft. DECK: 81 sq. ft. GARAGE: 355 sq. ft.
FIREPLACE: 1 sq. ft. OPEN TO BELOW: 219 sq. ft.
TOTAL: 1933 sq. ft.
MEASUREMENTS CALCULATED BY V1Photos.COM ARE DEEMED HIGHLY RELIABLE BUT NOT GUARANTEED.

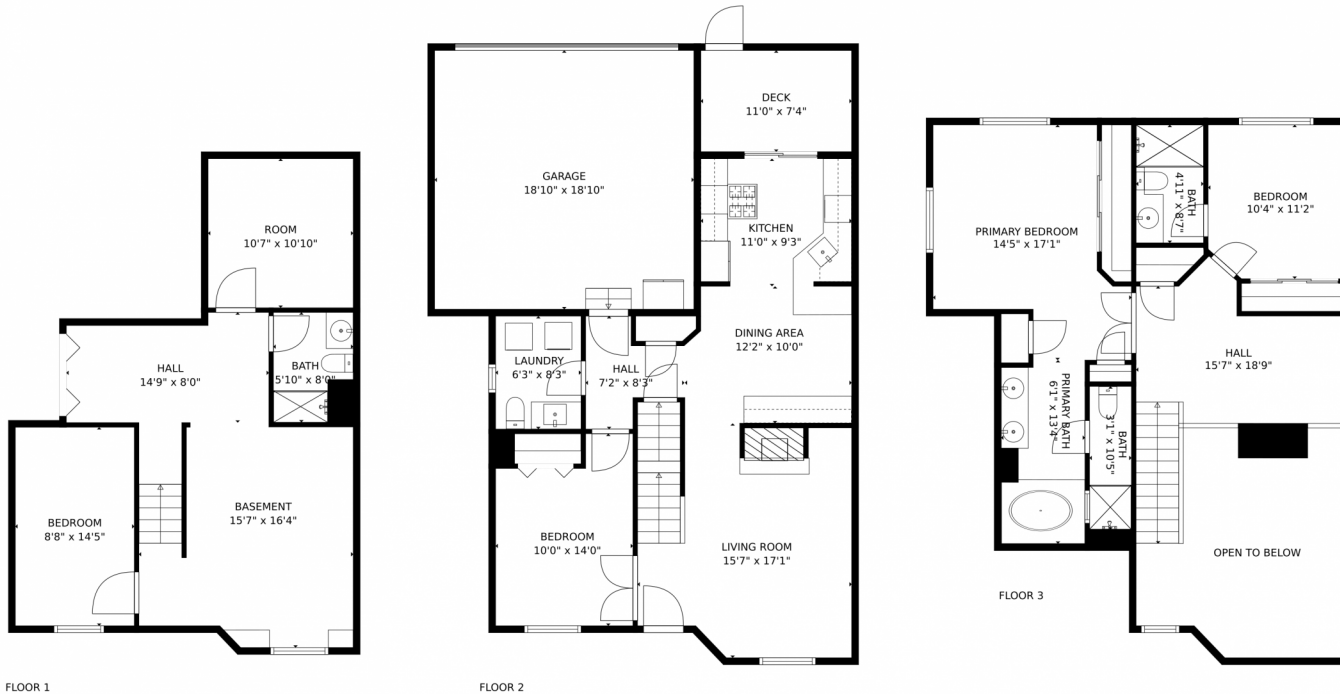
Disclaimer: Sizes and Dimensions are Approximate, Actual May Vary.



Taylor Haas
303-665-7368
taylorh@coloradorpm.com
<https://www.coloradorpm.com/available-rental-properties-denv>



2070 South Xenia Way, Denver, CO 80231 – All Levels



GROSS INTERNAL AREA
Below Ground: 522 sq. ft, FLOOR 2: 707 sq. ft, FLOOR 3: 704 sq. ft
EXCLUDED AREAS: ROOM: 115 sq. ft, DECK: 81 sq. ft, GARAGE: 355 sq. ft,
FIREPLACE: 1 sq. ft, OPEN TO BELOW: 219 sq. ft
TOTAL: 1933 sq. ft
MEASUREMENTS CALCULATED BY V1Photos.com ARE DEEMED HIGHLY RELIABLE BUT NOT GUARANTEED.



Disclaimer: Sizes and Dimensions are Approximate, Actual May Vary.



Taylor Haas
303-665-7368
taylorh@coloradorpm.com
<https://www.coloradorpm.com/available-rental-properties-denv>



Scan code
for more
property
details

