

Single Family

1758 SQFT

4 Beds

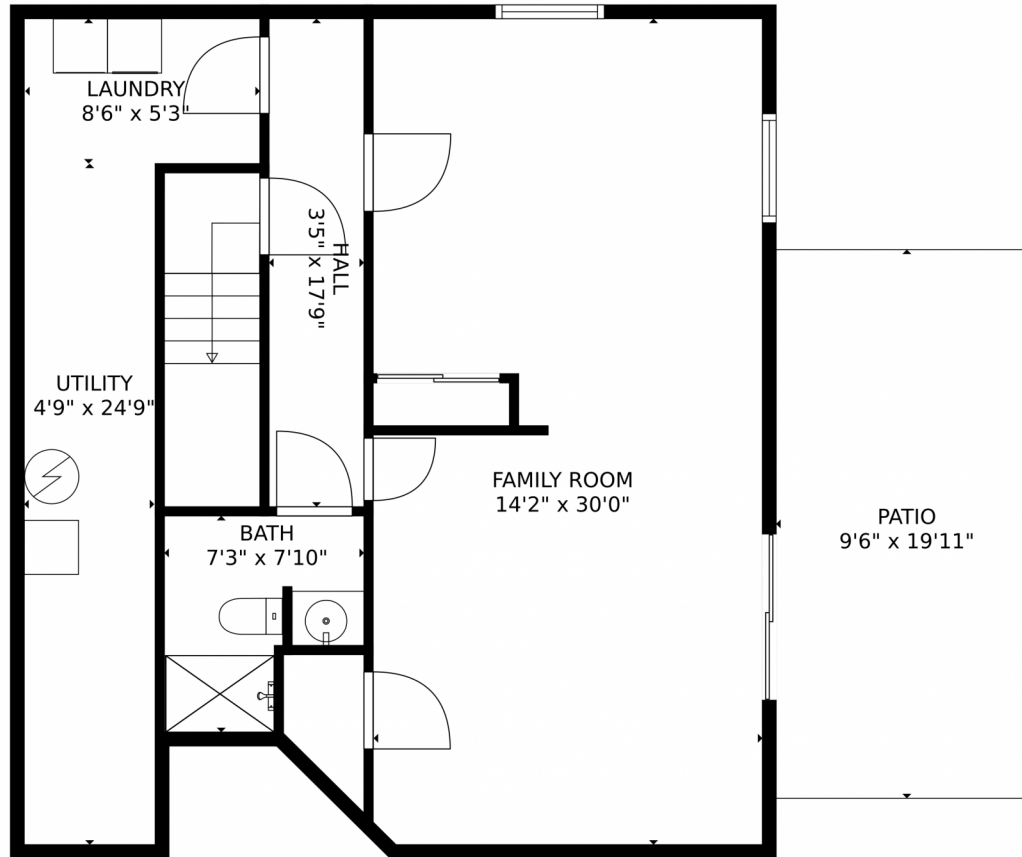
2/1 Baths



**Taylor Haas**  
 303-665-7368  
 taylorh@coloradorpm.com  
<https://www.coloradorpm.com/available-rental-properties-denver>



# 615 Upton Drive, Colorado Springs, CO 80911 – Lower Level



GROSS INTERNAL AREA  
Below Ground: 602 sq. ft, FLOOR 2: 1023 sq. ft  
EXCLUDED AREAS: PATIO: 189 sq. ft, UTILITY: 118 sq. ft, LAUNDRY: 45 sq. ft,  
GARAGE: 357 sq. ft, PORCH: 139 sq. ft  
TOTAL: 1625 sq. ft  
MEASUREMENTS CALCULATED BY V1Photos.COM ARE DEEMED HIGHLY RELIABLE BUT NOT GUARANTEED.



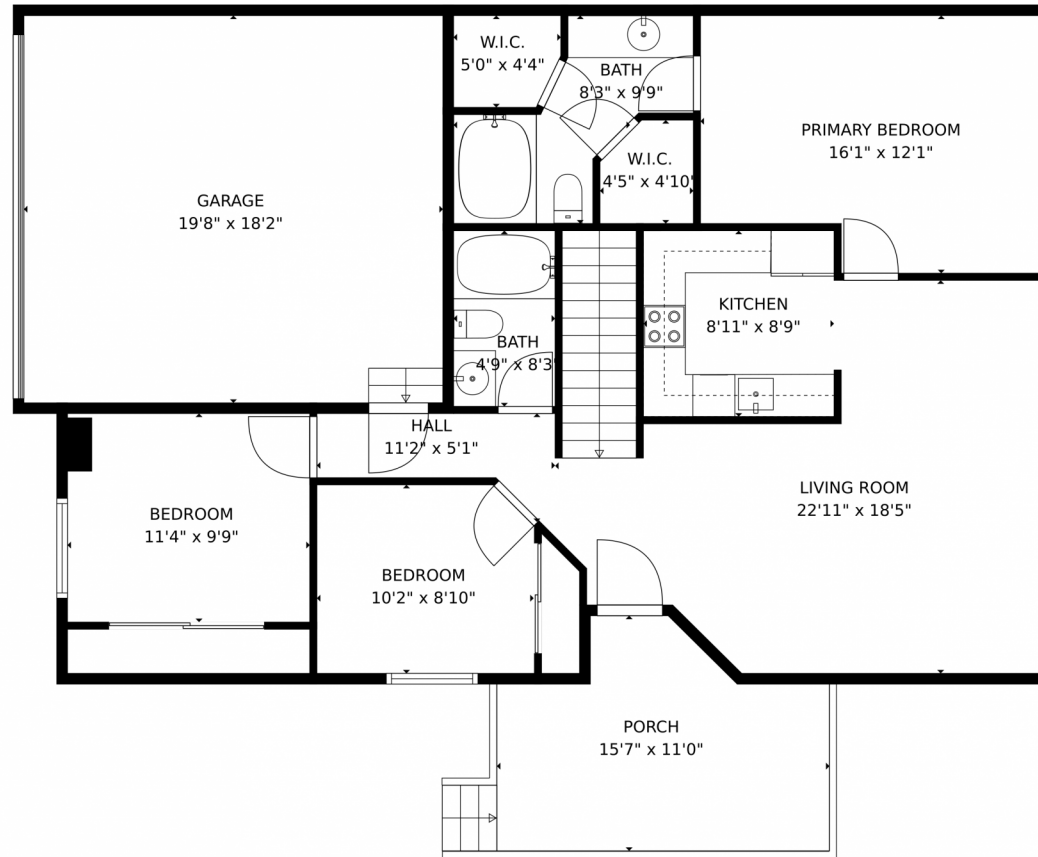
Disclaimer: Sizes and Dimensions are Approximate, Actual May Vary.



**Taylor Haas**  
303-665-7368  
taylorh@coloradorpm.com  
<https://www.coloradorpm.com/available-rental-properties-denver>



# 615 Upton Drive, Colorado Springs, CO 80911 – Main Level



GROSS INTERNAL AREA  
Below Ground: 602 sq. ft., FLOOR 2: 1023 sq. ft.  
EXCLUDED AREAS: PATIO: 189 sq. ft., UTILITY: 118 sq. ft., LAUNDRY: 45 sq. ft.,  
GARAGE: 357 sq. ft., PORCH: 139 sq. ft.  
TOTAL: 1625 sq. ft.  
MEASUREMENTS CALCULATED BY V1Photos.com ARE DEEMED HIGHLY RELIABLE BUT NOT GUARANTEED.



Disclaimer: Sizes and Dimensions are Approximate, Actual May Vary.



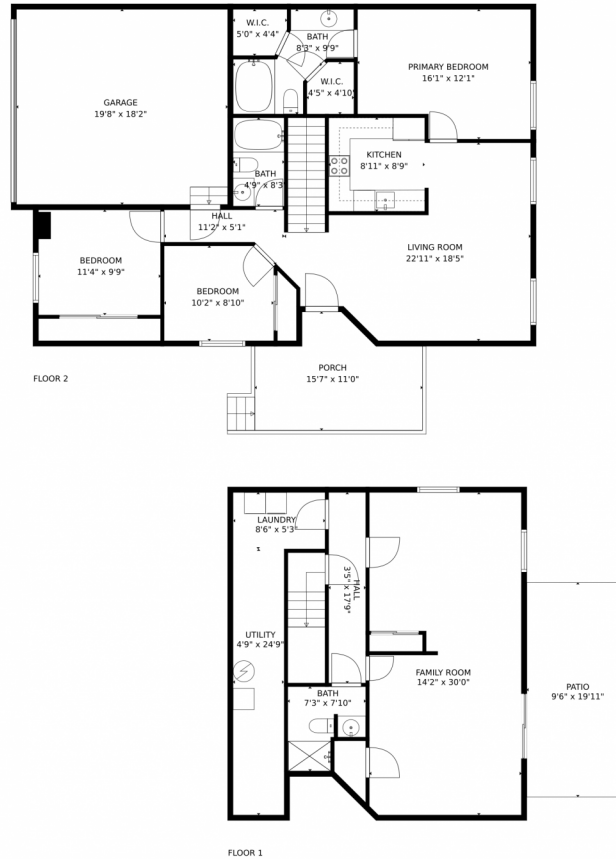
**Taylor Haas**  
303-665-7368  
taylorh@coloradorpm.com  
<https://www.coloradorpm.com/available-rental-properties-denver>



Scan code  
for more  
property  
details



# 615 Upton Drive, Colorado Springs, CO 80911 – All Levels



GROSS INTERNAL AREA  
Below Ground: 602 sq. ft, FLOOR 2: 1023 sq. ft  
EXCLUDED AREAS: PATIO: 189 sq. ft, UTILITY: 118 sq. ft, LAUNDRY: 45 sq. ft,  
GARAGE: 357 sq. ft, PORCH: 139 sq. ft  
TOTAL: 1625 sq. ft  
MEASUREMENTS CALCULATED BY V1Photos.com ARE DEEMED HIGHLY RELIABLE BUT NOT GUARANTEED.



Disclaimer: Sizes and Dimensions are Approximate, Actual May Vary.



**Taylor Haas**  
303-665-7368  
taylorh@coloradorpm.com  
<https://www.coloradorpm.com/available-rental-properties-denver>

