




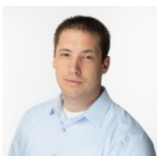
 Single Family

 1800 SQFT

 3 Beds

 2 Baths

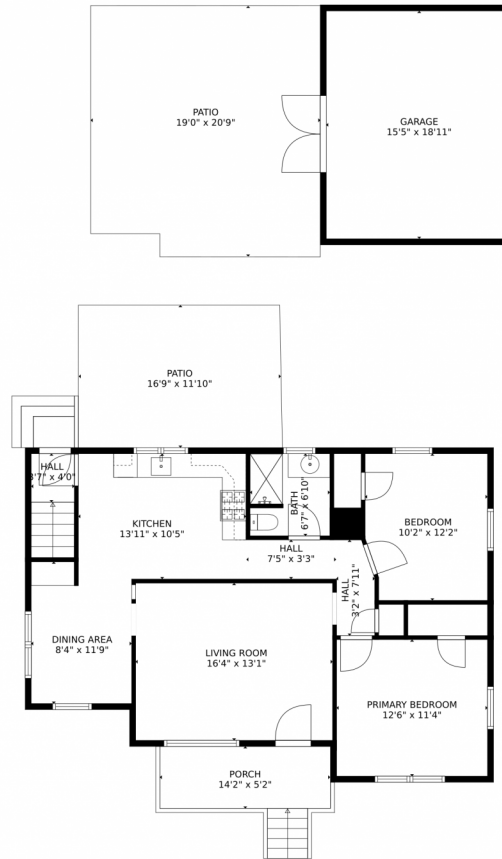
 1 Car



Jordan Kermes
952-956-2958
jordan@kermesllc.com



602 Minnequa, Pueblo, CO 81004 – Main Level



GROSS INTERNAL AREA
Below Ground: 856 sq. ft, FLOOR 2: 880 sq. ft
EXCLUDED AREAS: GARAGE: 291 sq. ft, PATIO: 585 sq. ft, PORCH: 73 sq. ft
TOTAL: 1736 sq. ft
MEASUREMENTS CALCULATED BY V1Photos.com ARE DEEMED HIGHLY RELIABLE BUT NOT GUARANTEED.



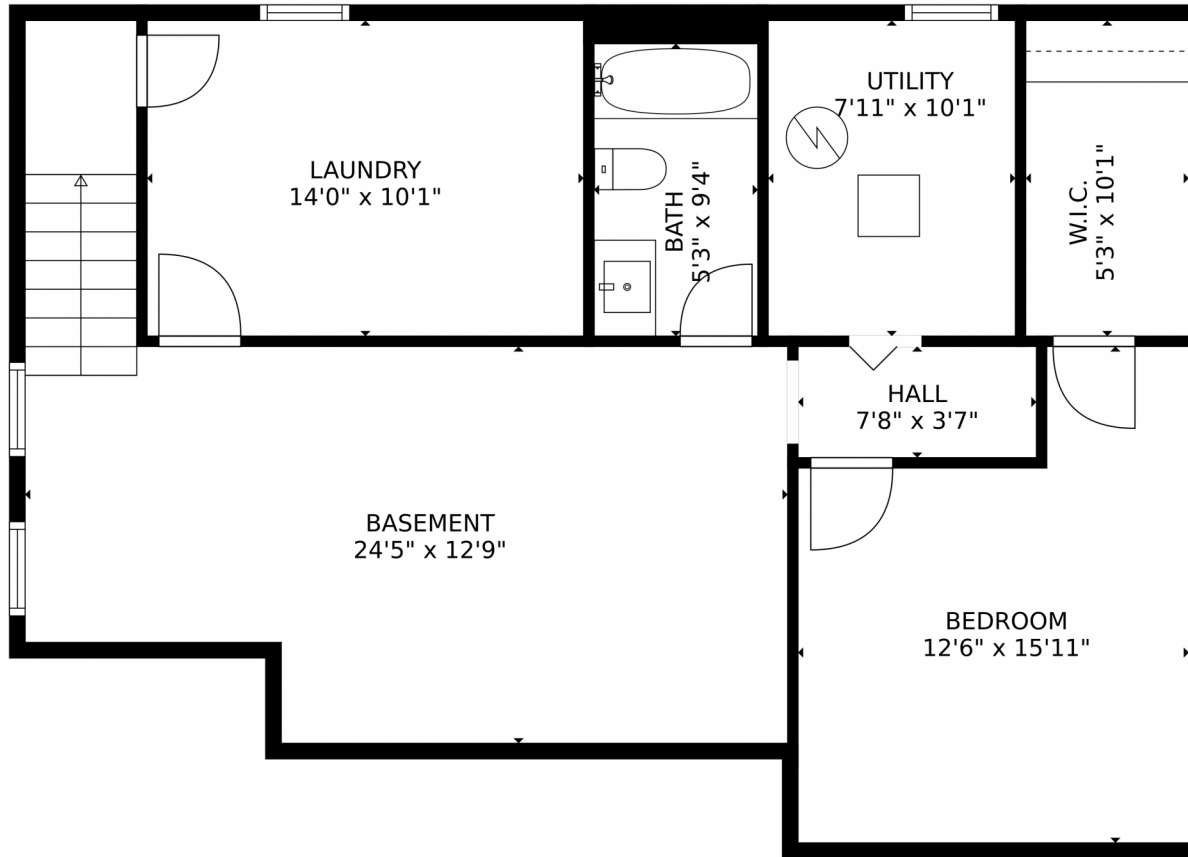
Disclaimer: Sizes and Dimensions are Approximate, Actual May Vary.



Jordan Kermes
952-956-2958
jordan@kermesllc.com



602 Minnequa, Pueblo, CO 81004 – Lower Level



GROSS INTERNAL AREA
Below Ground: 856 sq. ft, FLOOR 2: 880 sq. ft
EXCLUDED AREAS: GARAGE: 291 sq. ft, PATIO: 585 sq. ft, PORCH: 73 sq. ft
TOTAL: 1736 sq. ft
MEASUREMENTS CALCULATED BY V1Photos.com ARE DEEMED HIGHLY RELIABLE BUT NOT GUARANTEED.



Disclaimer: Sizes and Dimensions are Approximate, Actual May Vary.



Jordan Kermes
952-956-2958
jordan@kermesllc.com



602 Minnequa, Pueblo, CO 81004 – All Levels



GROSS INTERNAL AREA
Below Ground: 856 sq. ft, FLOOR 2: 880 sq. ft
EXCLUDED AREAS: GARAGE: 291 sq. ft, PATIO: 585 sq. ft, PORCH: 73 sq. ft
TOTAL: 1736 sq. ft
MEASUREMENTS CALCULATED BY V1Photos.com ARE DEEMED HIGHLY RELIABLE BUT NOT GUARANTEED.



Disclaimer: Sizes and Dimensions are Approximate, Actual May Vary.



Jordan Kermes
952-956-2958
jordan@kermesllc.com

