



 Single Family

 2902 SQFT

 4 Beds

 3 Baths

## PROPERTY DETAILS

Welcome to this beautiful single-family home located at 15951 Red Bud Drive in Parker, CO 80134. With 4 bedrooms, 3 full bathrooms, and a spacious 2902 sqft floor plan, this property offers plenty of space for you and your family. The property features a stunning corridor, a cozy living room with a fireplace, a chef's dream kitchen, and a well-maintained yard with a patio and deck. Located in a desirable community, this property offers access to excellent schools, parks, and amenities. Don't miss out on this opportunity to make this house your home!



Taylor Haas

303-665-7368

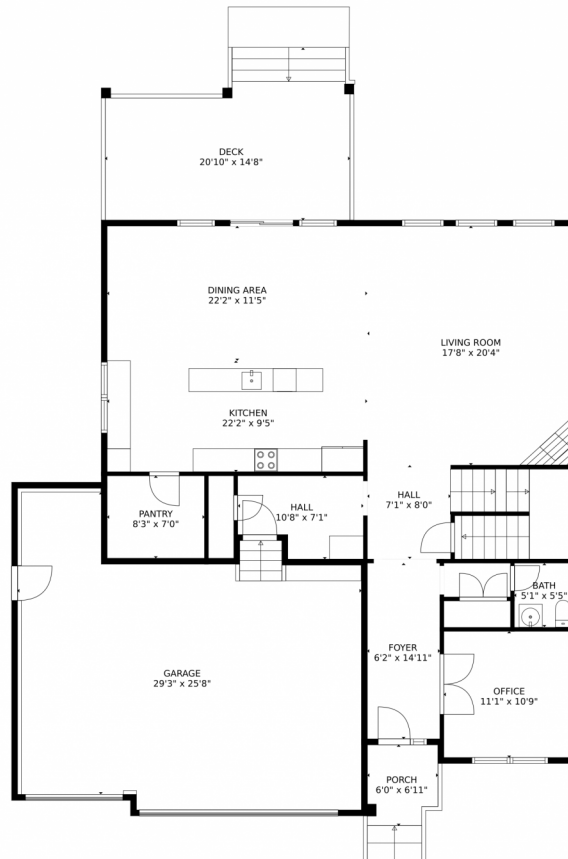
taylorh@coloradorpm.com

<https://www.coloradorpm.com/available-rental-properties-denver>

Scan code  
for more  
property  
details



# 15951 Red Bud Drive, Parker, CO 80134 – Main Level



GROSS INTERNAL AREA  
Below Ground: 0 sq. ft, FLOOR 2: 1404 sq. ft, FLOOR 3: 1389 sq. ft  
EXCLUDED AREAS: UNFINISHED BASEMENT: 1300 sq. ft, GARAGE: 651 sq. ft, PORCH: 39 sq. ft,  
DECK: 258 sq. ft  
TOTAL: 2793 sq. ft  
MEASUREMENTS CALCULATED BY V1Photos.com ARE DEEMED HIGHLY RELIABLE BUT NOT GUARANTEED.



Disclaimer: Sizes and Dimensions are Approximate, Actual May Vary.



**Taylor Haas**

303-665-7368

taylorh@coloradorpm.com

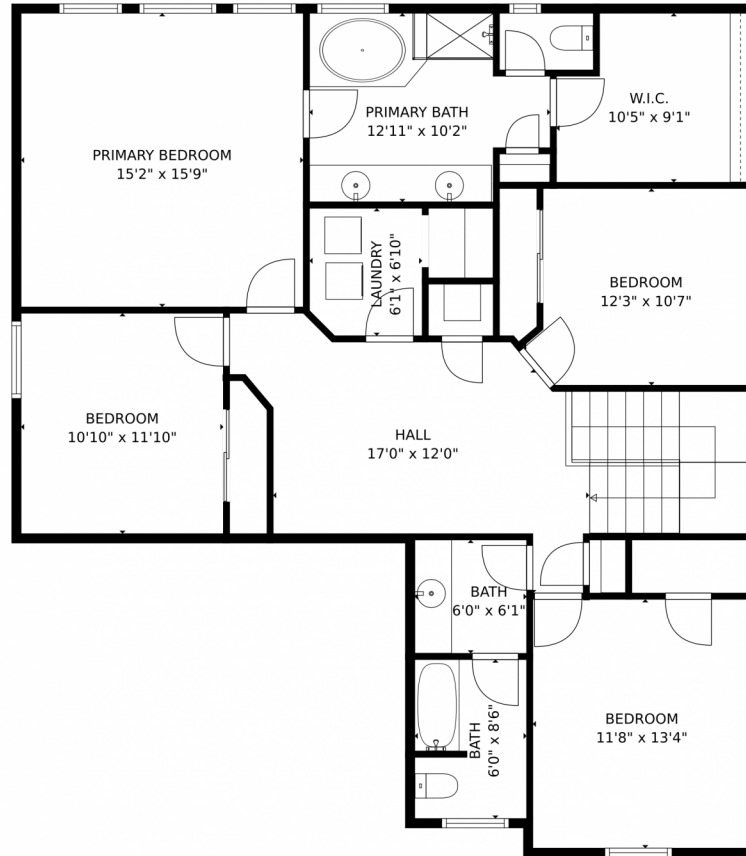
<https://www.coloradorpm.com/available-rental-properties-denver>



Scan code  
for more  
property  
details



# 15951 Red Bud Drive, Parker, CO 80134 – Upper Level



GROSS INTERNAL AREA  
Below Ground: 0 sq. ft, FLOOR 2: 1404 sq. ft, FLOOR 3: 1389 sq. ft  
EXCLUDED AREAS: UNFINISHED BASEMENT: 1300 sq. ft, GARAGE: 651 sq. ft, PORCH: 39 sq. ft,  
DECK: 258 sq. ft  
TOTAL: 2793 sq. ft  
MEASUREMENTS CALCULATED BY V1Photos.COM ARE DEEMED HIGHLY RELIABLE BUT NOT GUARANTEED.

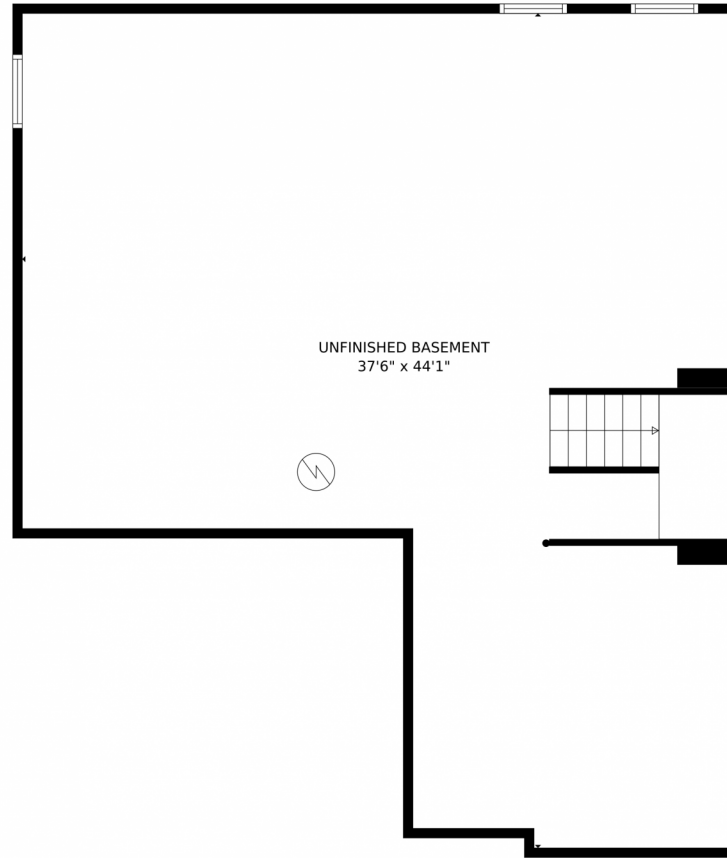


Disclaimer: Sizes and Dimensions are Approximate, Actual May Vary.



**Taylor Haas**  
303-665-7368  
taylorh@coloradorpm.com  
<https://www.coloradorpm.com/available-rental-properties-denver>





GROSS INTERNAL AREA  
Below Ground: 0 sq. ft, FLOOR 2: 1404 sq. ft, FLOOR 3: 1389 sq. ft  
EXCLUDED AREAS: UNFINISHED BASEMENT: 1300 sq. ft, GARAGE: 651 sq. ft, PORCH: 39 sq. ft,  
DECK: 258 sq. ft  
TOTAL: 2793 sq. ft  
MEASUREMENTS CALCULATED BY V1Photos.com ARE DEEMED HIGHLY RELIABLE BUT NOT GUARANTEED.

Disclaimer: Sizes and Dimensions are Approximate, Actual May Vary.



**Taylor Haas**  
303-665-7368  
taylorh@coloradorpm.com  
<https://www.coloradorpm.com/available-rental-properties-denver>





