




 Single Family  3580 SQFT  4 Beds  3/1 Baths  2 Car  1.77 Acre

## PROPERTY DETAILS

Welcome to stunning 6817 Berry Bush Lane in beautiful Evergreen! Upgrades? Look no further... this place has it all! This spacious 3580 square foot home offers a multitude of desirable features and a breathtaking view of Mount Evans. As you enter, you'll immediately notice the exquisite no VOC European finish hickory floors that adorn the main level, adding a touch of elegance to the space. The open floor plan and vaulted ceilings create a sense of spaciousness and allow for an abundance of natural light to fill the home. Situated on nearly two acres, this property offers ample outdoor living spaces for you to enjoy. Relax and unwind in the hot tub while taking in the panoramic views of Mount Evans. The Sunsetter retractable awning with wind sensor provides shade and protection, allowing you to comfortably enjoy the outdoors in any weather. For those who appreciate wine, you'll be delighted by the 99 bottle Wine Enthusiast wine rack located in the perfectly temperature-controlled wine closet. It's the perfect addition for any wine connoisseur. Energy efficiency is a key feature of this home, with smart thermostats, 100% seller-owned solar panels providing a 100% offset (NO ELECTRIC BILL!), and fire mitigation measures in place to ensure safety and comfort. The Harmon thermostat-controlled pellet stove in the living room and the Jotul wood-burning stove in the basement provide additional heating options for cozy evenings inside. With four bedrooms and four



**Jenna McMenaman**  
303-912-0338  
jenna@madisonprops.com



bathrooms, this home provides ample space for all of your favorite people or critters to enjoy. The shop in the basement offers a versatile space for hobbies or a home office. Two flagstone patios complete the outdoor living experience, providing a perfect space for entertaining or simply enjoying the beauty of the surrounding landscape. Don't miss the opportunity to own this exceptional property in Evergreen, Colorado. Schedule a showing today and experience the tranquility and luxury this home has to offer!



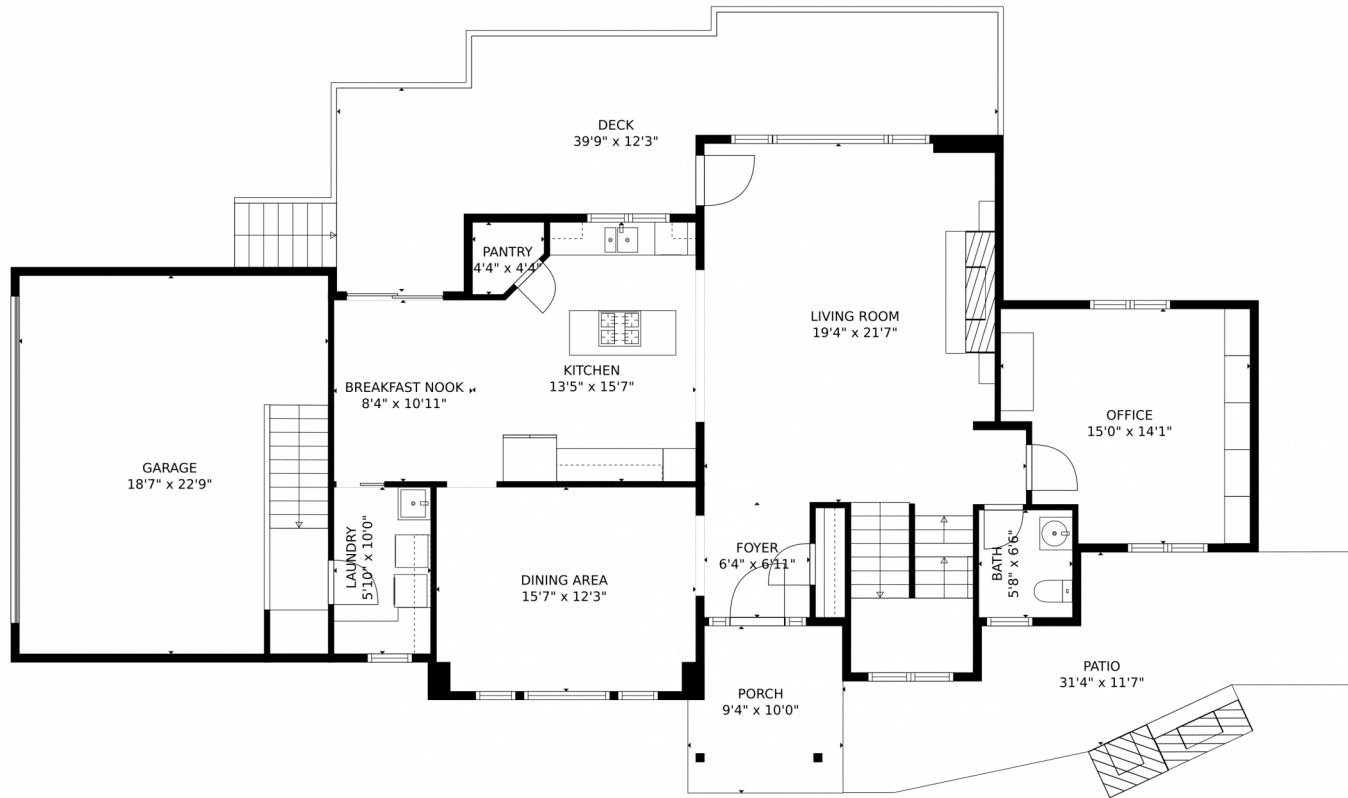
**Jenna McMenaman**  
303-912-0338  
jenna@madisonprops.com



Scan code  
for more  
property  
details



# 6817 Berry Bush Lane, Evergreen, CO 80439 – Main Level



GROSS INTERNAL AREA  
Below Ground: 819 sq. ft, FLOOR 2: 1333 sq. ft, FLOOR 3: 853 sq. ft  
EXCLUDED AREAS: UNFINISHED BASEMENT: 332 sq. ft, UNDEFINED: 83 sq. ft, PATIO: 992 sq. ft,  
GARAGE: 422 sq. ft, PORCH: 89 sq. ft, DECK: 374 sq. ft,  
OPEN TO BELOW: 357 sq. ft, BALCONY: 49 sq. ft  
TOTAL: 3005 sq. ft  
MEASUREMENTS CALCULATED BY V1Photos.com ARE DEEMED HIGHLY RELIABLE BUT NOT GUARANTEED.



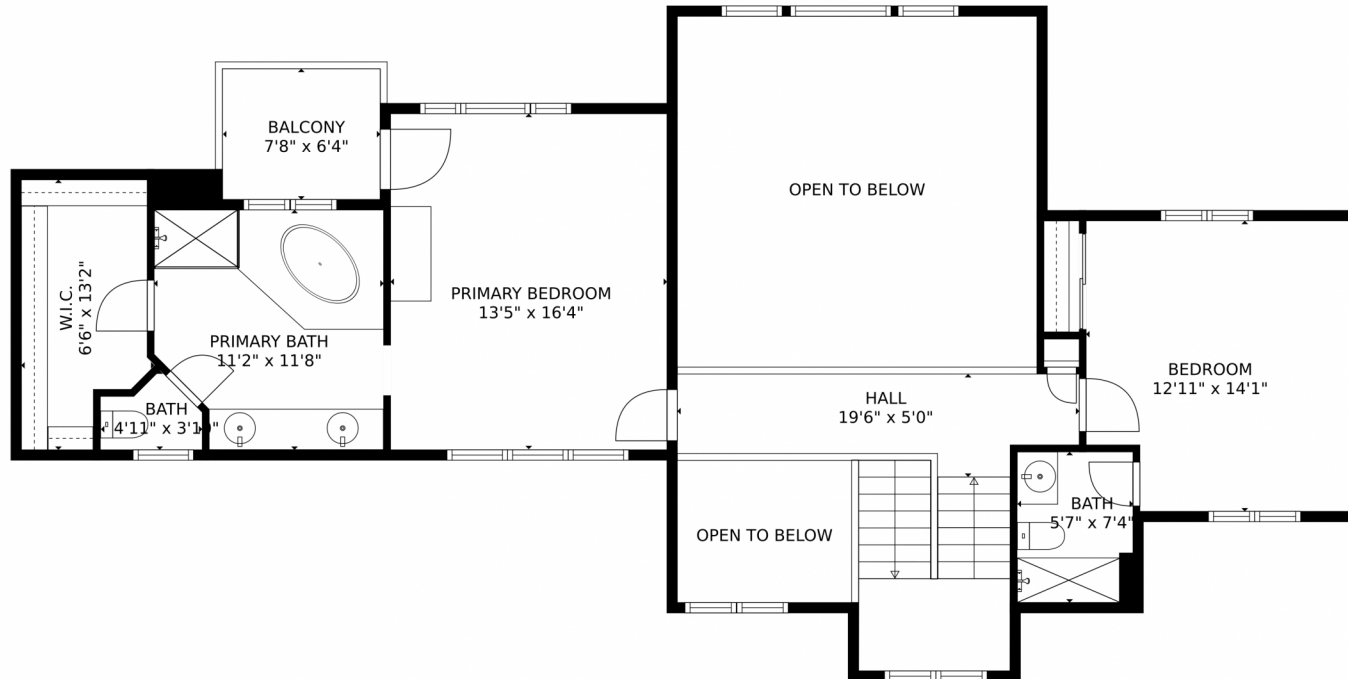
Disclaimer: Sizes and Dimensions are Approximate, Actual May Vary.



Jenna McMenaman  
303-912-0338  
jenna@madisonprops.com



# 6817 Berry Bush Lane, Evergreen, CO 80439 – Upper Level



GROSS INTERNAL AREA  
Below Ground: 819 sq. ft, FLOOR 2: 1333 sq. ft, FLOOR 3: 853 sq. ft  
EXCLUDED AREAS: UNFINISHED BASEMENT: 332 sq. ft, UNDEFINED: 83 sq. ft, PATIO: 992 sq. ft,  
GARAGE: 422 sq. ft, PORCH: 89 sq. ft, DECK: 374 sq. ft,  
OPEN TO BELOW: 357 sq. ft, BALCONY: 49 sq. ft  
TOTAL: 3005 sq. ft  
MEASUREMENTS CALCULATED BY V1Photos.COM ARE DEEMED HIGHLY RELIABLE BUT NOT GUARANTEED.



Disclaimer: Sizes and Dimensions are Approximate, Actual May Vary.



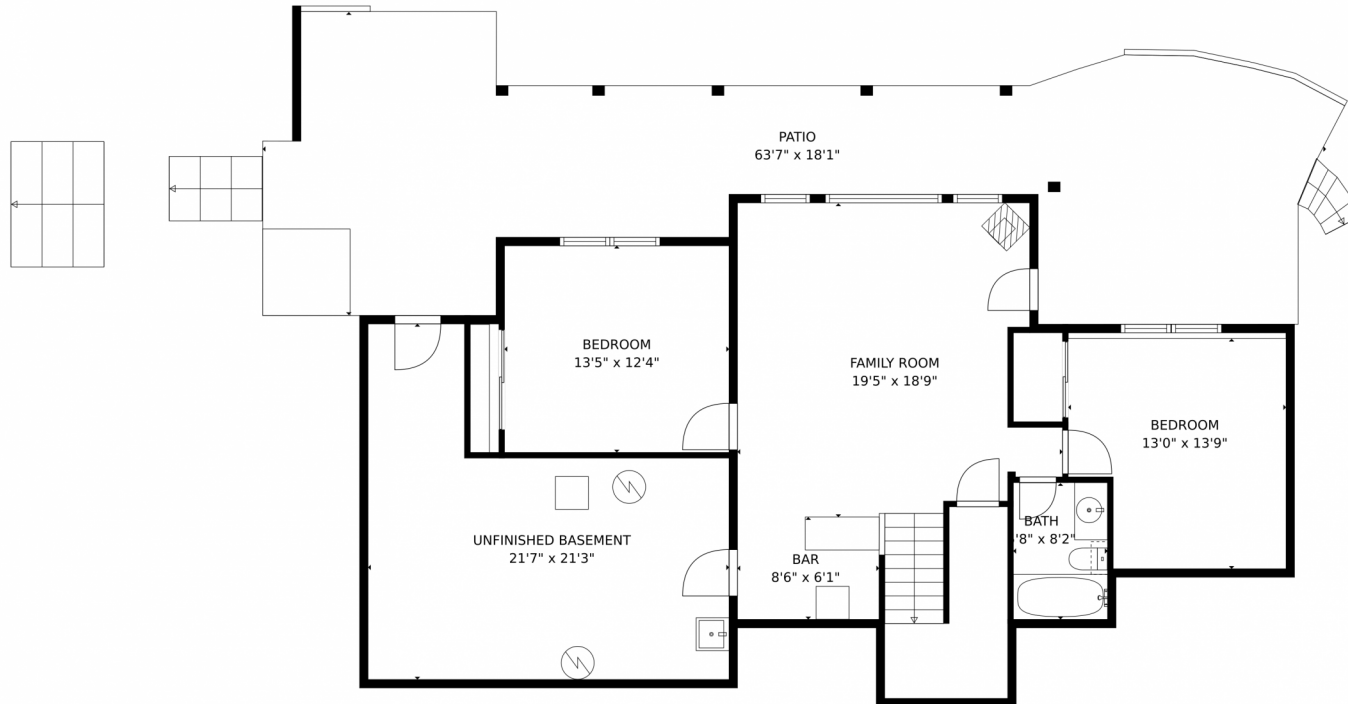
**Jenna McMenaman**  
303-912-0338  
jenna@madisonprops.com



Scan code for more property details



# 6817 Berry Bush Lane, Evergreen, CO 80439 – Lower Level



GROSS INTERNAL AREA  
Below Ground: 819 sq. ft, FLOOR 2: 1333 sq. ft, FLOOR 3: 853 sq. ft  
EXCLUDED AREAS: UNFINISHED BASEMENT: 332 sq. ft, UNDEFINED: 83 sq. ft, PATIO: 992 sq. ft,  
GARAGE: 422 sq. ft, PORCH: 89 sq. ft, DECK: 374 sq. ft,  
OPEN TO BELOW: 357 sq. ft, BALCONY: 49 sq. ft  
TOTAL: 3005 sq. ft  
MEASUREMENTS CALCULATED BY V1Photos.com ARE DEEMED HIGHLY RELIABLE BUT NOT GUARANTEED.



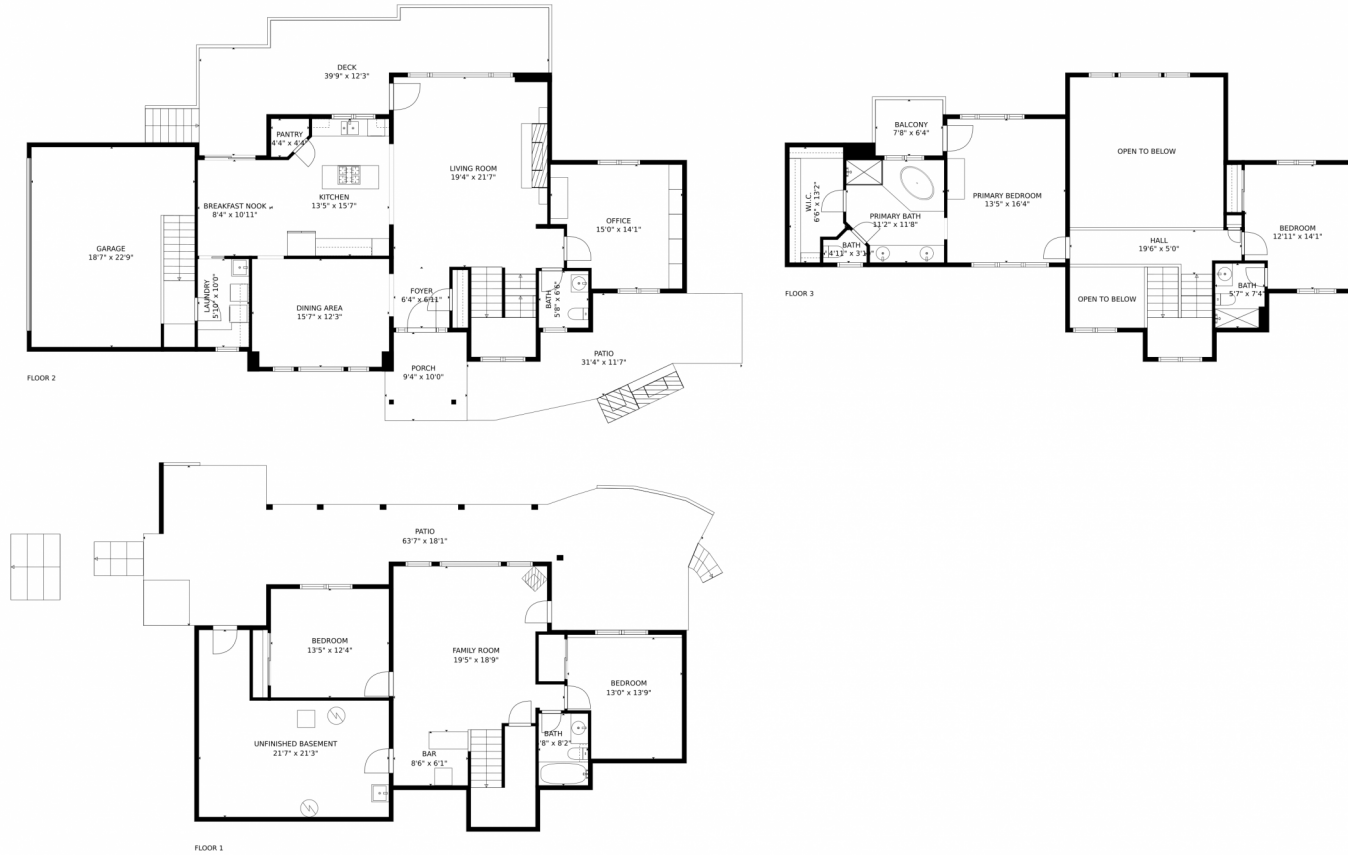
Disclaimer: Sizes and Dimensions are Approximate, Actual May Vary.



**Jenna McMenaman**  
303-912-0338  
jenna@madisonprops.com



# 6817 Berry Bush Lane, Evergreen, CO 80439 – All Levels



GROSS INTERNAL AREA  
 Below Ground: 819 sq. ft, FLOOR 2: 1333 sq. ft, FLOOR 3: 853 sq. ft  
 EXCLUDED AREAS: UNFINISHED BASEMENT: 332 sq. ft, UNDEFINED: 83 sq. ft, PATIO: 992 sq. ft,  
 GARAGE: 422 sq. ft, PORCH: 89 sq. ft, DECK: 374 sq. ft,  
 OPEN TO BELOW: 357 sq. ft, BALCONY: 49 sq. ft  
 TOTAL: 3005 sq. ft  
 MEASUREMENTS CALCULATED BY V1Photos.COM ARE DEEMED HIGHLY RELIABLE BUT NOT GUARANTEED.



Disclaimer: Sizes and Dimensions are Approximate, Actual May Vary.



**Jenna McMenaman**  
 303-912-0338  
 jenna@madisonprops.com

