

## Charming Whisper Creek Home - For Sale



Single Family



1744 SQFT



4 Beds



2 Baths



2 Car



0.12 Acre

## PROPERTY DETAILS

With an open floor plan boasting 9' ceilings, this main level living gem offers a seamless blend of comfort and convenience. Step inside to find an abundance of natural light flooding in through west-facing windows, highlighting the newly installed luxury vinyl plank flooring and plush carpeting. The spacious kitchen, complete with a dining area, updated appliances, new granite countertops, and a generous pantry, is a culinary enthusiast's dream. The primary bedroom is a tranquil retreat featuring new carpeting and an upgraded ensuite bathroom with a linen closet and a tastefully designed walk-in closet. 3 additional main level bedrooms share a well-appointed full bathroom, while the 4th bedroom serves as an ideal space for a home office or flex room. Outside, relish in the privacy of your covered front patio or unwind on the new deck, perfect for alfresco dining and summer gatherings. The home also offers ample storage, including a sizable crawl space and an oversized 2-car garage with built-in shelves.



**Josh Molinaro**

303-229-3419

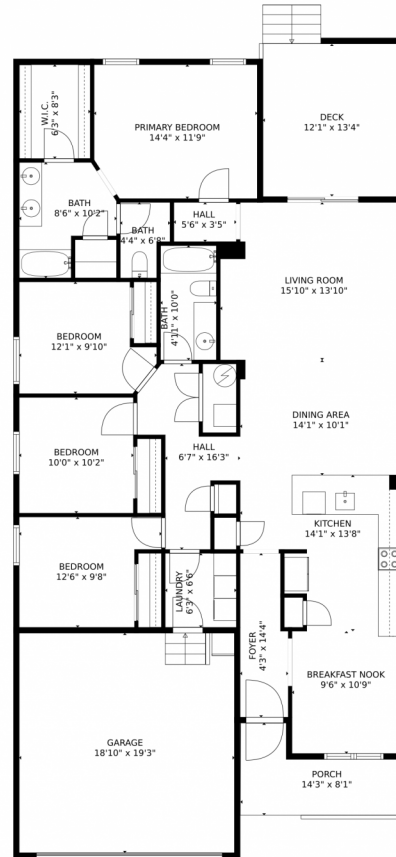
[jmolinaro@listings.com](mailto:jmolinaro@listings.com)

<https://listings.com/josh.molinaro/>

Scan code  
 for more  
 property  
 details



# 9034 Ellis Way, Arvada, CO 80005 – Main Level



GROSS INTERNAL AREA  
FLOOR 1: 1571 sq. ft  
EXCLUDED AREAS: GARAGE: 363 sq. ft, DECK: 162 sq. ft, PORCH: 82 sq. ft  
TOTAL: 1571 sq. ft  
MEASUREMENTS CALCULATED BY V1Photos.COM ARE DEEMED HIGHLY RELIABLE BUT NOT GUARANTEED.



Disclaimer: Sizes and Dimensions are Approximate, Actual May Vary.



**Josh Molinaro**  
303-229-3419  
jmolinaro@listings.com  
<https://listings.com/josh.molinaro/>



Scan code  
for more  
property  
details

