

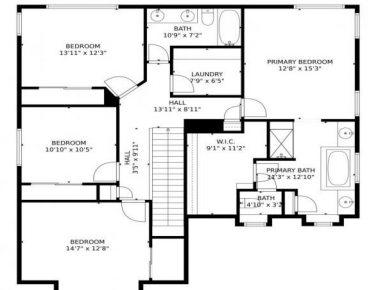


12940 Coffee Tree Street  
 Parker, CO 80134  
 COMMUNITY: Village on the Green

MLS # 2214662  
 PRICE \$700,000



12940 Coffee Tree Street, Parker, CO 80134 - 2nd Level



Single Family  
 3613 SQFT  
 5 Beds  
 3/1 Baths  
 3 Car  
 0.14 Acre

## PROPERTY DETAILS

Welcome home to Village on the Green of Parker, CO! Immediately upon arrival you will take notice of the 3-car garage along with a cozy front porch space which greets you. Come on inside where you are welcomed by a spacious home office just inside the entryway. An open concept main living space is up next gently transitioning you from the formal dining area into the living room and kitchen, this layout was made for your entertainer's heart. Next venture upstairs where you will find the glorious owner's suite complete with tons of space along with a private 5-piece bathroom and utterly massive walk in closet. Three very generously sized additional bedrooms and a secondary full bathroom complete the upper level of the home. But wait... There's more! The basement is also fully finished with a second family room, fifth bedroom, and another bath making this space ideal for a guest or a teen lounge. You will love entertaining in your new backyard and outdoor living space complete with a spacious patio for your BBQ and outdoor furniture along with tons of grassed area for lounge and play. Residents of Village on the Green enjoy the award winning education system of Douglas County Schools including Ponderosa High School. Everything you need is just minutes from your new home including King Soopers for your groceries, the dry cleaner, Walgreens, and you can even take in a night of fun at the Parker Pour House. Minutes to Old Town Parker and



**Tatyana Sturm**  
 720-350-5909  
 tatyana@exitrealtydtc.com  
 https://thestorckteam.com

Scan code for more property details

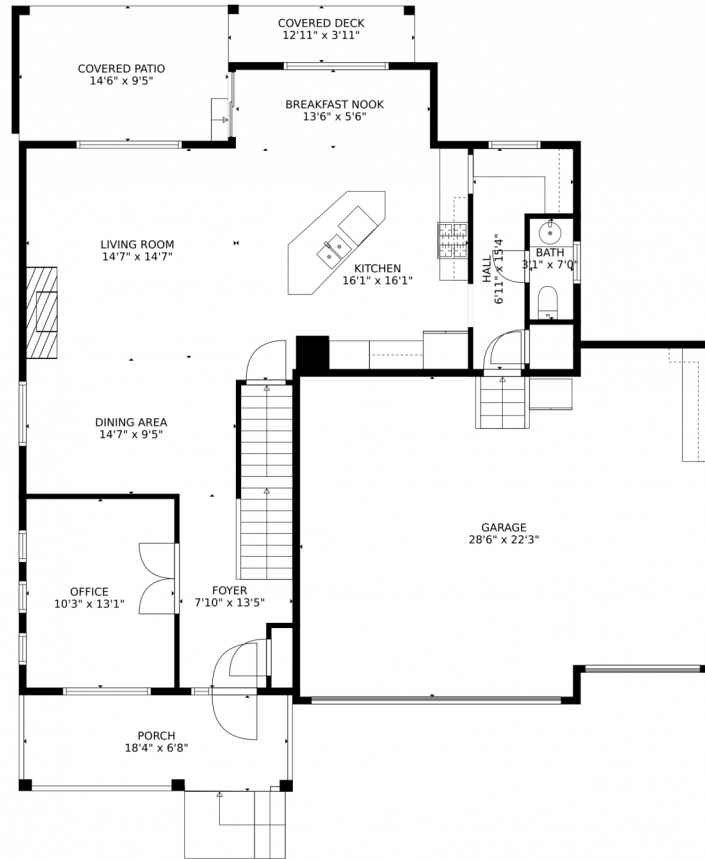


Mainstreet where you can opt outside at O'Brien Park offering a robust swimming pool with water park style slides or for a game of basketball at their open courts. Enjoy the Parker Farmer's Market every Sunday boasting many local vendors from fresh bison, farm to table produce, food trucks, and much more. Whether you are after fun on a Saturday evening at the Tailgate with live music or taking in brunch while you catch up with friends at a casual eatery, Old Town Parker has limitless fun.



**Tatyana Sturm**  
720-350-5909  
tatyana@exitrealtydtc.com  
<https://thestorckteam.com>





GROSS INTERNAL AREA  
Below Ground: 917 sq. ft, FLOOR 2: 1048 sq. ft, FLOOR 3: 1214 sq. ft  
EXCLUDED AREAS: UNDEFINED: 15 sq. ft, GARAGE: 632 sq. ft, PORCH: 118 sq. ft,  
COVERED DECK: 51 sq. ft, COVERED PATIO: 136 sq. ft  
TOTAL: 3179 sq. ft  
MEASUREMENTS CALCULATED BY V1Photos.COM ARE DEEMED HIGHLY RELIABLE BUT NOT GUARANTEED.



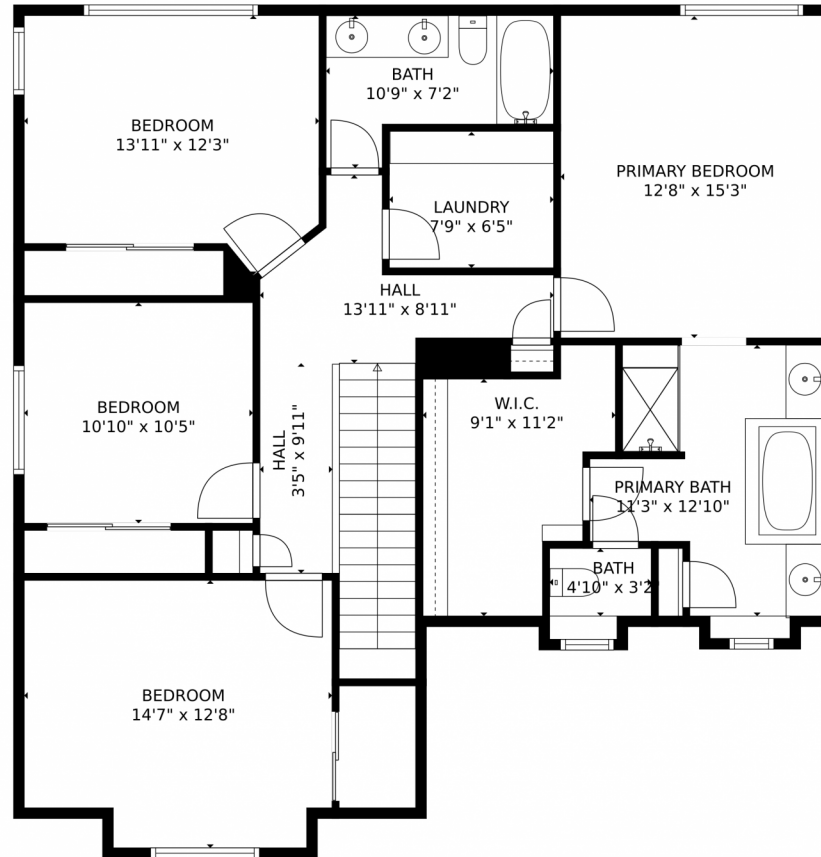
Disclaimer: Sizes and Dimensions are Approximate, Actual May Vary.



**Tatyana Sturm**  
720-350-5909  
tatyana@exitrealtydtc.com  
<https://thestorckteam.com>



# 12940 Coffee Tree Street, Parker, CO 80134 – 2nd Level



GROSS INTERNAL AREA  
Below Ground: 917 sq. ft, FLOOR 2: 1048 sq. ft, FLOOR 3: 1214 sq. ft  
EXCLUDED AREAS: UNDEFINED: 15 sq. ft, GARAGE: 632 sq. ft, PORCH: 118 sq. ft,  
COVERED DECK: 51 sq. ft, COVERED PATIO: 136 sq. ft  
TOTAL: 3179 sq. ft  
MEASUREMENTS CALCULATED BY V1Photos.COM ARE DEEMED HIGHLY RELIABLE BUT NOT GUARANTEED.



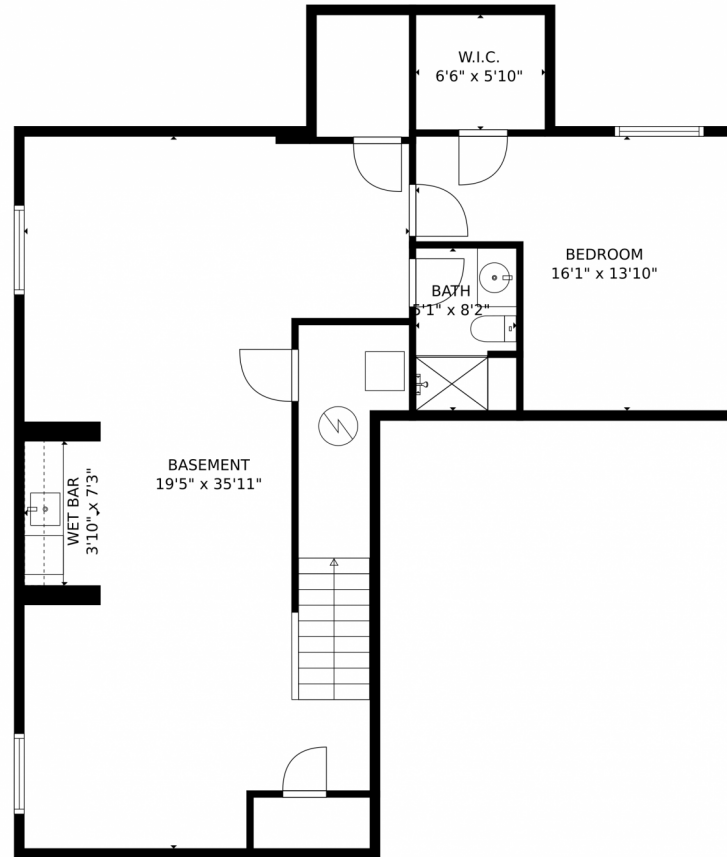
Disclaimer: Sizes and Dimensions are Approximate, Actual May Vary.



**Tatyana Sturm**  
720-350-5909  
tatyana@exitrealtydtc.com  
<https://thestorckteam.com>



# 12940 Coffee Tree Street, Parker, CO 80134 – Lower Level



GROSS INTERNAL AREA  
Below Ground: 917 sq. ft, FLOOR 2: 1048 sq. ft, FLOOR 3: 1214 sq. ft  
EXCLUDED AREAS: UNDEFINED: 15 sq. ft, GARAGE: 632 sq. ft, PORCH: 118 sq. ft,  
COVERED DECK: 51 sq. ft, COVERED PATIO: 136 sq. ft  
TOTAL: 3179 sq. ft  
MEASUREMENTS CALCULATED BY V1Photos.COM ARE DEEMED HIGHLY RELIABLE BUT NOT GUARANTEED.



Disclaimer: Sizes and Dimensions are Approximate, Actual May Vary.

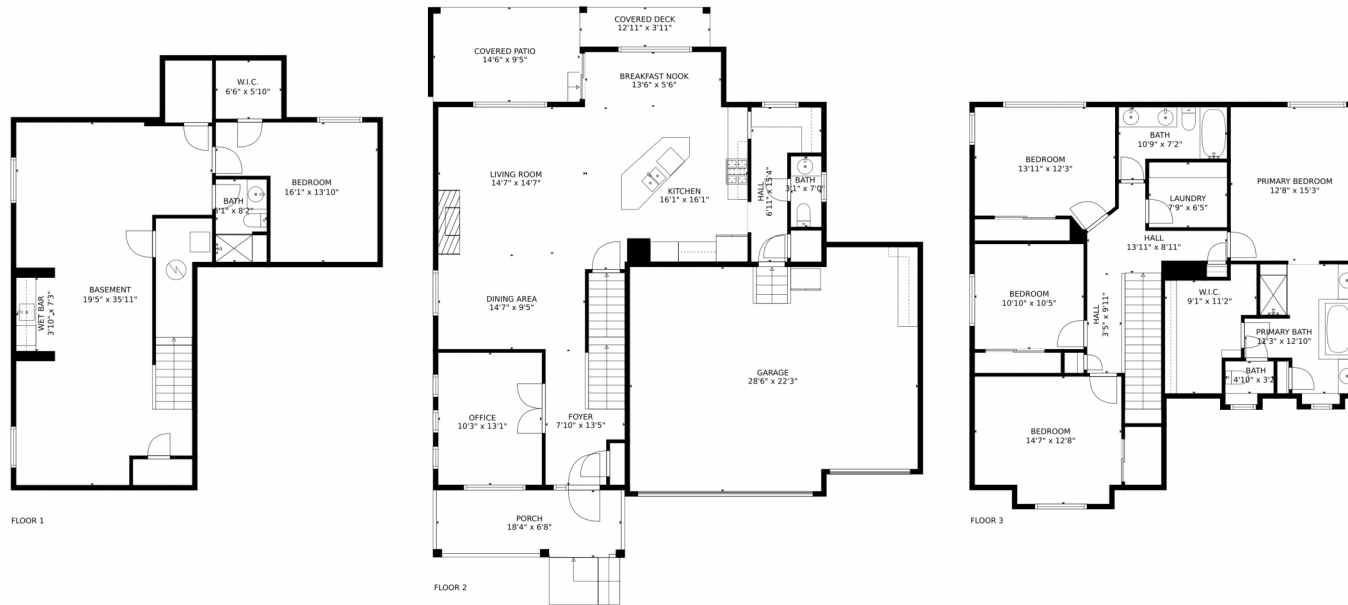


**Tatyana Sturm**  
720-350-5909  
tatyana@exitrealtydtc.com  
<https://thestorckteam.com>



Scan code  
for more  
property  
details

# 12940 Coffee Tree Street, Parker, CO 80134 – All Levels



GROSS INTERNAL AREA  
Below Ground: 917 sq. ft, FLOOR 2: 1048 sq. ft, FLOOR 3: 1214 sq. ft  
EXCLUDED AREAS: UNDEFINED: 15 sq. ft, GARAGE: 632 sq. ft, PORCH: 118 sq. ft,  
COVERED DECK: 51 sq. ft, COVERED PATIO: 136 sq. ft  
TOTAL: 3179 sq. ft  
MEASUREMENTS CALCULATED BY V1Photos.COM ARE DEEMED HIGHLY RELIABLE BUT NOT GUARANTEED.



Disclaimer: Sizes and Dimensions are Approximate, Actual May Vary.



**Tatyana Sturm**  
720-350-5909  
tatyana@exitrealttydtc.com  
<https://thestorckteam.com>



Scan code  
for more  
property  
details

