




 Multi Family  1760 SQFT  2 Beds  2/1 Baths  2 Car  0.03 Acre

## PROPERTY DETAILS

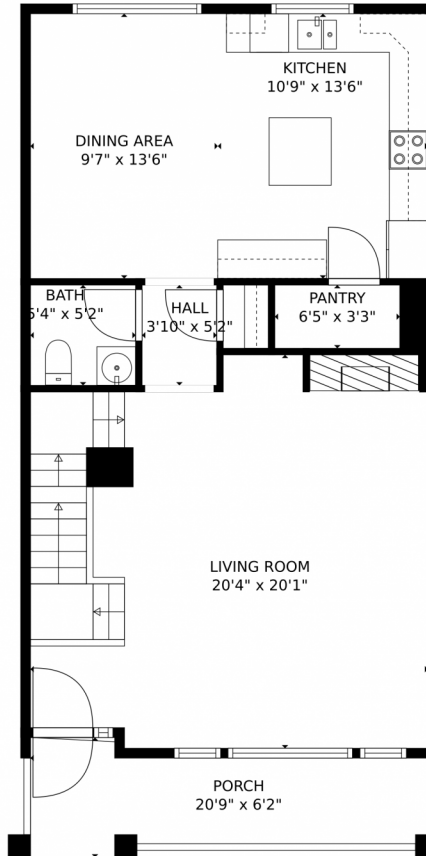
Welcome home to one of the top views in Castle Rock. Relax with your favorite beverage from the primary bedroom's balcony, while watching the golfers on the 14th fairway of the Plum Creek Golf Course. From the patio on the ground level, a berm on the golf course adds privacy for the residences while enjoying the open space the course creates. It's an amazing combination. Inside the home, you'll have natural light from all directions since this home is on the END with only one shared wall. The kitchen has so much counter and cabinet space that the pantry seems overkill and yet, it's a loved feature. The nook in the kitchen can be a homework station and today serves as a micro home office. With an ensuite bath for each bedroom on the upper level, this home is a "house hacker's dream". The primary bedroom has the 5piece of course with a large soaking tub, walk in shower, and a large walk in closet with natural light from a window. This unit has a 2 car garage from the lower basement level moving all the mechanics down to the basement along with the laundry & utility sink. The feature not to be missed is the ADDITIONAL parking outside the garage. It's not a common find in this complex. Your guests will be able to come right up to the front via the path between the buildings and didn't have to find visitor parking. This is what you have been looking for! Welcome home!



**Gwen Hamm**  
 720-530-5489  
 gwenhamm@kw.com  
<https://gwenhamm.kw.com/>



# 1554 Royal Troon Drive, Castle Rock, CO 80104 – Main Level



GROSS INTERNAL AREA  
Below Ground: 186 sq. ft. FLOOR 2: 757 sq. ft. FLOOR 3: 757 sq. ft.  
EXCLUDED AREAS: ELECTRICAL ROOM: 27 sq. ft. GARAGE: 467 sq. ft. PORCH: 110 sq. ft.  
BALCONY: 84 sq. ft.  
TOTAL: 1700 sq. ft.  
MEASUREMENTS CALCULATED BY V1Photos.com ARE DEEMED HIGHLY RELIABLE BUT NOT GUARANTEED.



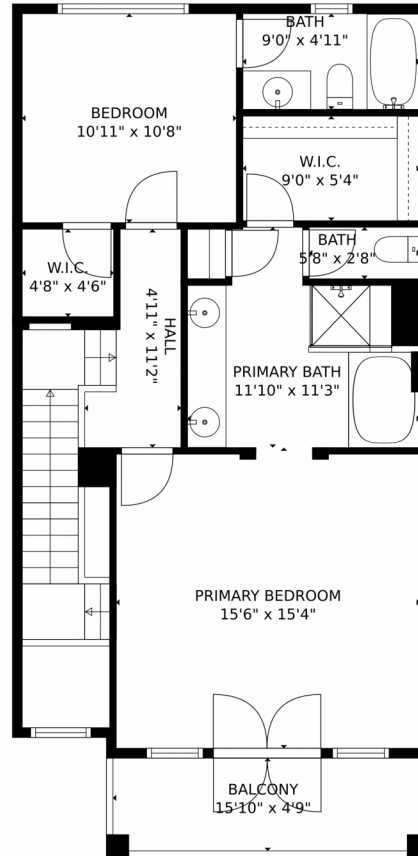
Disclaimer: Sizes and Dimensions are Approximate, Actual May Vary.



**Gwen Hamm**  
720-530-5489  
gwenhamm@kw.com  
<https://gwenhamm.kw.com/>



# 1554 Royal Troon Drive, Castle Rock, CO 80104 – Second Level



GROSS INTERNAL AREA  
Below Ground: 186 sq. ft, FLOOR 2: 757 sq. ft, FLOOR 3: 757 sq. ft  
EXCLUDED AREAS: ELECTRICAL ROOM: 27 sq. ft, GARAGE: 467 sq. ft, PORCH: 110 sq. ft,  
BALCONY: 84 sq. ft  
TOTAL: 1700 sq. ft  
MEASUREMENTS CALCULATED BY V1Photos.COM ARE DEEMED HIGHLY RELIABLE BUT NOT GUARANTEED.



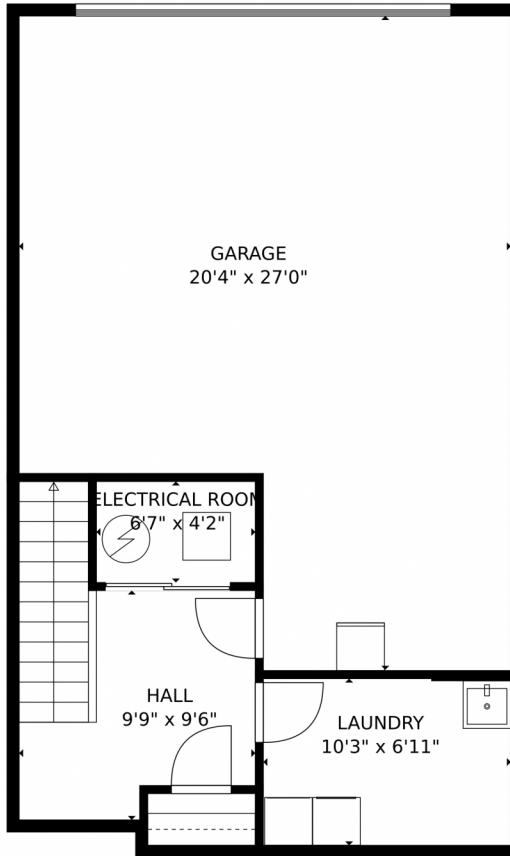
Disclaimer: Sizes and Dimensions are Approximate, Actual May Vary.



**Gwen Hamm**  
720-530-5489  
gwenhamm@kw.com  
<https://gwenhamm.kw.com/>



1554 Royal Troon Drive, Castle Rock, CO 80104 – Lower Level



GROSS INTERNAL AREA  
Below Ground: 186 sq. ft., FLOOR 2: 757 sq. ft., FLOOR 3: 757 sq. ft.  
EXCLUDED AREAS: ELECTRICAL ROOM: 27 sq. ft., GARAGE: 467 sq. ft., PORCH: 110 sq. ft.,  
BALCONY: 84 sq. ft.  
TOTAL: 1700 sq. ft.  
MEASUREMENTS CALCULATED BY V1Photos.com ARE DEEMED HIGHLY RELIABLE BUT NOT GUARANTEED.



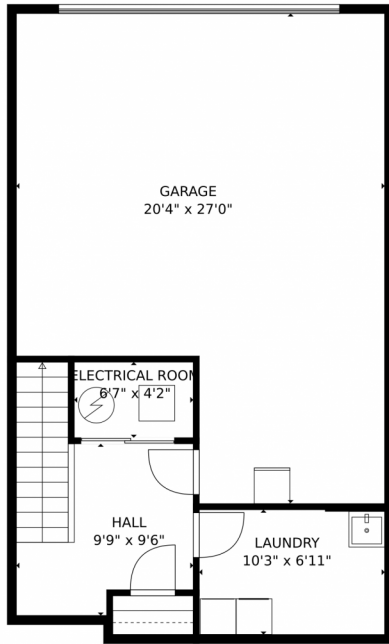
Disclaimer: Sizes and Dimensions are Approximate, Actual May Vary.



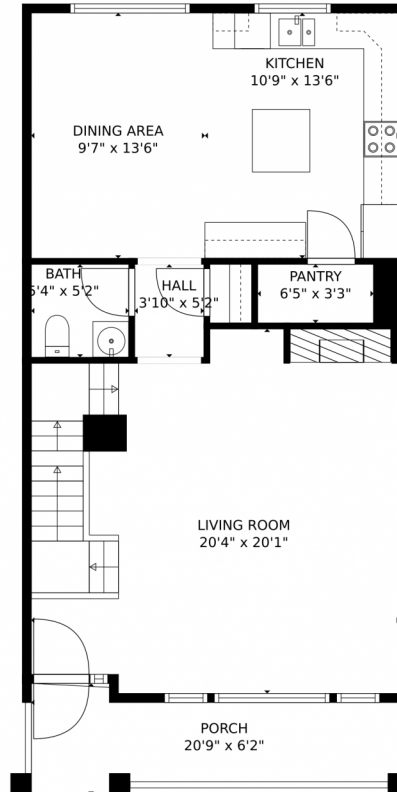
**Gwen Hamm**  
720-530-5489  
gwenhamm@kw.com  
<https://gwenhamm.kw.com/>



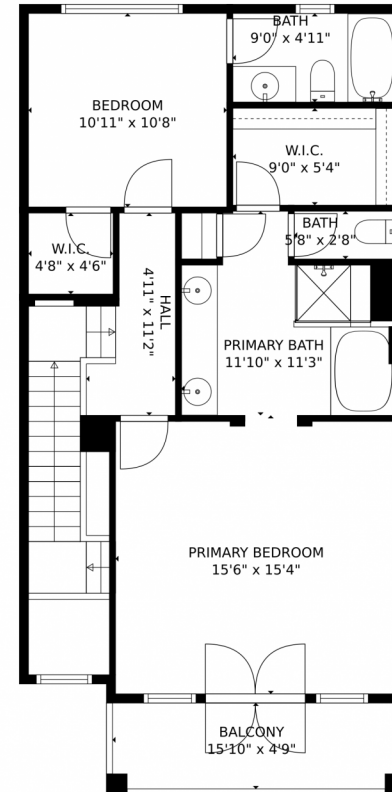
# 1554 Royal Troon Drive, Castle Rock, CO 80104 – All Levels



FLOOR 1



FLOOR 2



FLOOR 3

GROSS INTERNAL AREA  
 Below Ground: 186 sq. ft. FLOOR 2: 757 sq. ft. FLOOR 3: 757 sq. ft.  
 EXCLUDED AREAS: ELECTRICAL ROOM: 27 sq. ft. GARAGE: 467 sq. ft. PORCH: 110 sq. ft.  
 BALCONY: 84 sq. ft.  
 TOTAL: 1700 sq. ft.  
 MEASUREMENTS CALCULATED BY V1Photos.COM ARE DEEMED HIGHLY RELIABLE BUT NOT GUARANTEED.



Disclaimer: Sizes and Dimensions are Approximate, Actual May Vary.



**Gwen Hamm**  
 720-530-5489  
 gwenhamm@kw.com  
<https://gwenhamm.kw.com/>



Scan code  
 for more  
 property  
 details

