



Townhouse



1648 SQFT



2 Beds



1 Baths



2 Car



0.02 Acre

## PROPERTY DETAILS

Opportunity Knocks! Corner Unit Townhome in Building Adjacent to Community Pool in Chambers Ridge-South Facing and Flooded with Natural Light-Great Open Floorplan Featuring Vaulted Ceilings, Loft with Built-in Bookcase, Skylights and Beams, and Charming Brick Fireplace-Roof, Windows, Furnace, A/C All Replaced Approximately 2016-Gutters Have Leaf Guard Covers-Attached Tuck Under 2 Car Basement Garage with Newer Insulated Garage Door and Garage Door Opener Featuring Electronic Lock for Added Security-Newer Washer and Dryer-Cosmetic Updates Needed Throughout and Priced Accordingly at \$300,000- Open Layout Makes for Easy Kitchen Remodel with No Need to Relocate Plumbing or Remove Walls. Well Maintained Community with Easy Access to I-225 and I-25. Close to Horseshoe Park, West Toll Gate Creek and Wheel Park. HOA Fee only \$185/month.



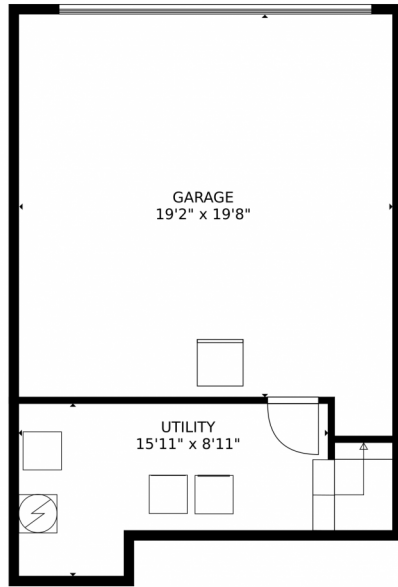
**Cyndy Halley**  
303-548-0151  
cyndyhalley@comcast.net



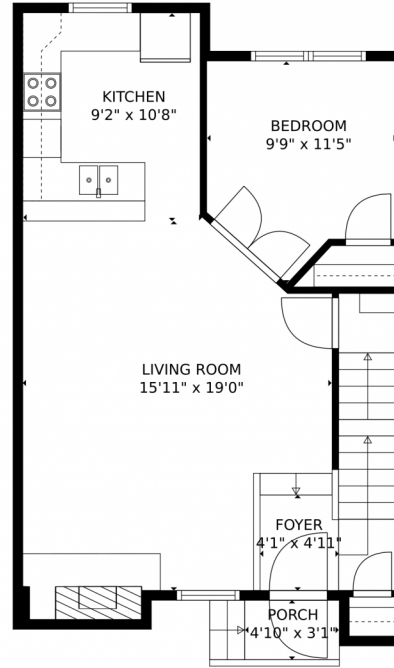
Scan code  
for more  
property  
details



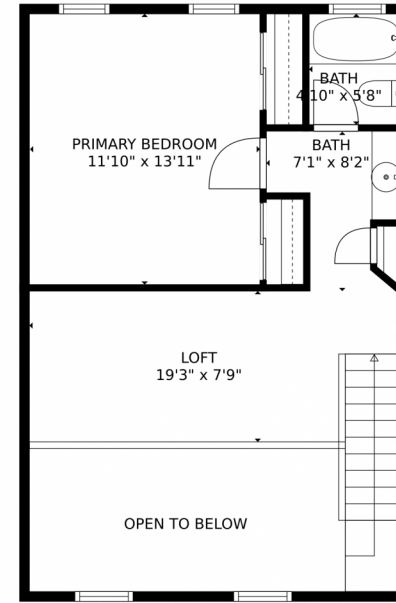
# 2004 S Helena Street #A, Aurora, CO 80013 – All Levels



FLOOR 1



FLOOR 2



FLOOR 3

GROSS INTERNAL AREA  
Below Ground: 0 sq. ft, FLOOR 2: 550 sq. ft, FLOOR 3: 449 sq. ft  
EXCLUDED AREAS: GARAGE: 399 sq. ft, UTILITY: 118 sq. ft, PORCH: 15 sq. ft,  
OPEN TO BELOW: 119 sq. ft  
TOTAL: 999 sq. ft  
MEASUREMENTS CALCULATED BY V1Photos.com ARE DEEMED HIGHLY RELIABLE BUT NOT GUARANTEED.



Disclaimer: Sizes and Dimensions are Approximate, Actual May Vary.



**Cyndy Halley**  
303-548-0151  
cyndyhalley@comcast.net



Scan code  
for more  
property  
details

