



425 Upper Elk Valley Drive  
 Evergreen, CO 80439  
 COMMUNITY: Saddleback



Single Family



6000 SQFT



4 Beds



3/2 Baths



4 Car



35 Acre

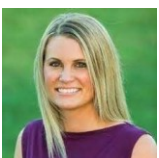
## PROPERTY DETAILS

Welcome to this stunning property located in the beautiful community of Saddleback in Evergreen, CO. This spacious single-family home offers 4 bedrooms, 3 full bathrooms, and 2 half bathrooms spread across a generous 6000 square feet of living space. With a 4-car garage, there's plenty of room for all your vehicles and storage needs.

The open floor plan, light hardwood flooring, and abundance of natural light create a warm and inviting atmosphere throughout the home. The living room, with its built-in features and cozy fireplace, is the perfect place to relax and unwind. The kitchen is a chef's dream, with its stainless steel appliances, dark stone countertops, and ample storage space.

The bedrooms are spacious and offer beautiful views, while the bathrooms are elegantly designed with extensive cabinet space and mirrors. The deck and patio area provide a serene outdoor space, perfect for enjoying the breathtaking mountain views.

Located in the desirable community of Saddleback, this property offers additional amenities such as an outdoor pool, adding to the appeal of this remarkable home. Don't miss your chance to make this property your own!



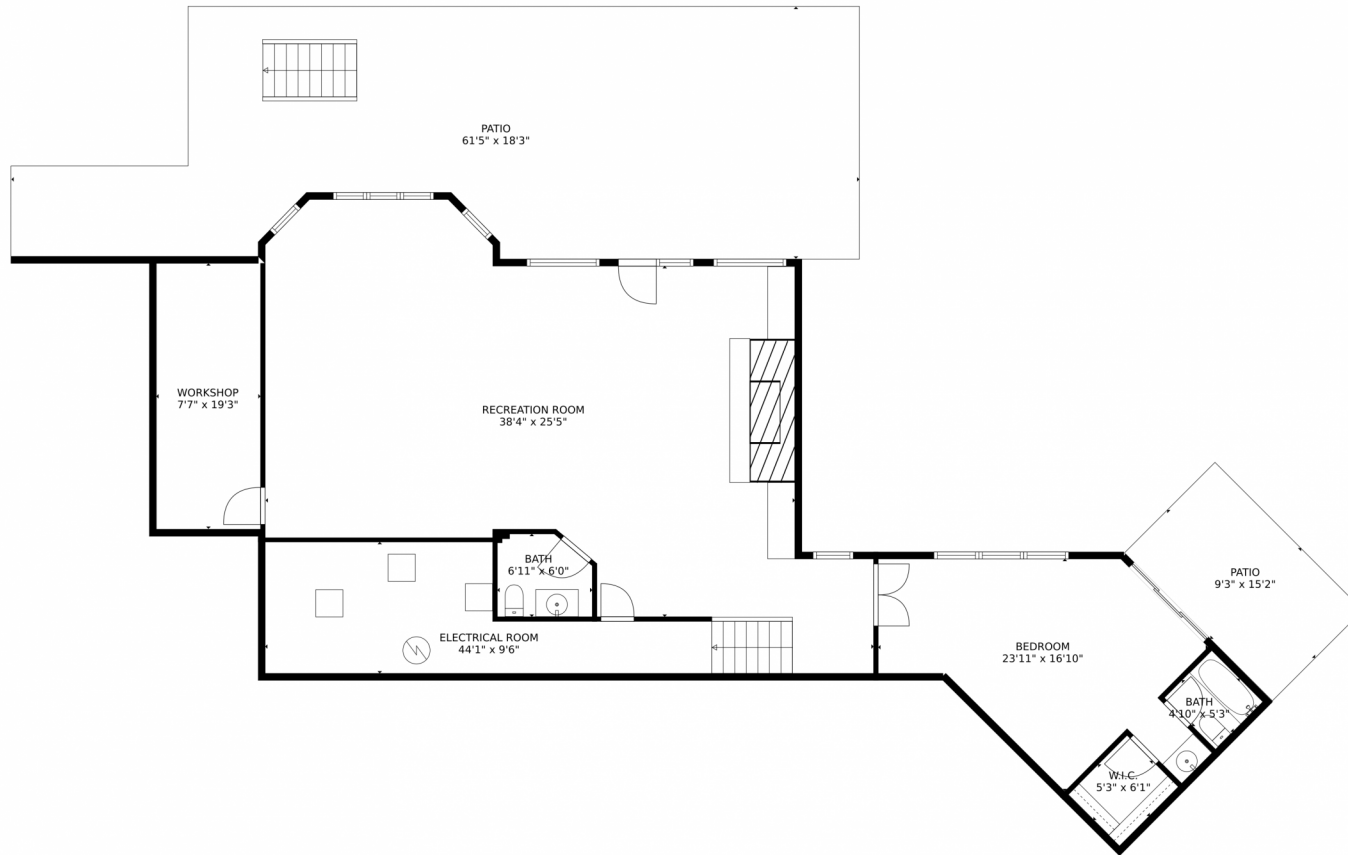
**Jamie Flanagan**  
 402-980-7972  
 jamie.flanagan@exprealty.com



Scan code  
 for more  
 property  
 details



# 425 Upper Elk Valley Drive, Evergreen, CO 80439 – Lower Level



GROSS INTERNAL AREA  
Below Ground: 1329 sq. ft, FLOOR 2: 2830 sq. ft, FLOOR 3: 1176 sq. ft  
EXCLUDED AREAS: WORKSHOP: 145 sq. ft, PATIO: 1043 sq. ft, ELECTRICAL ROOM: 261 sq. ft,  
GARAGE: 1357 sq. ft, DECK: 452 sq. ft, BALCONY: 77 sq. ft,  
PORCH: 60 sq. ft, OPEN TO BELOW: 587 sq. ft  
TOTAL: 5335 sq. ft  
MEASUREMENTS CALCULATED BY V1Photos.COM ARE DEEMED HIGHLY RELIABLE BUT NOT GUARANTEED.



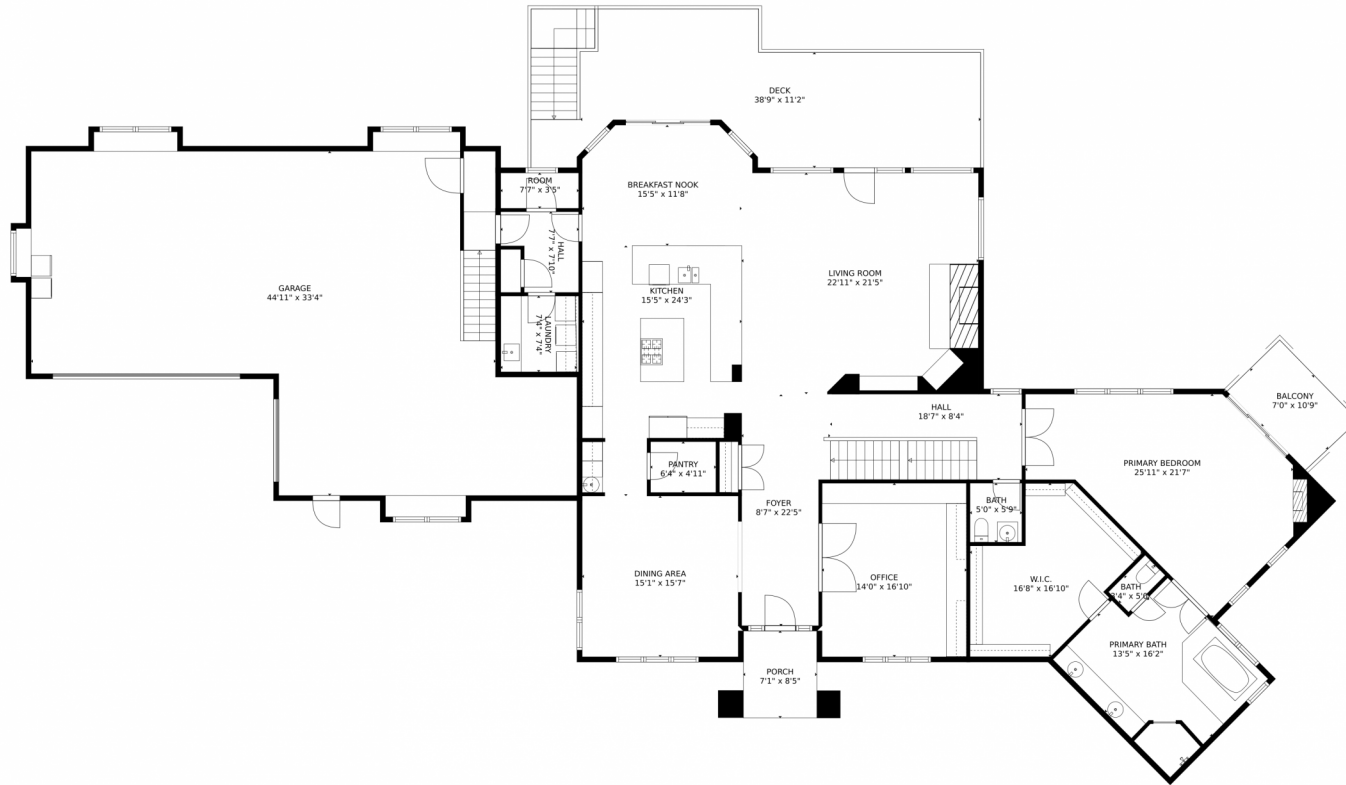
Disclaimer: Sizes and Dimensions are Approximate, Actual May Vary.



**Jamie Flanagan**  
402-980-7972  
jamie.flanagan@exprealty.com



# 425 Upper Elk Valley Drive, Evergreen, CO 80439 – Main Level



GROSS INTERNAL AREA  
Below Ground: 1329 sq. ft, FLOOR 2: 2830 sq. ft, FLOOR 3: 1176 sq. ft  
EXCLUDED AREAS: WORKSHOP: 145 sq. ft, PATIO: 1043 sq. ft, ELECTRICAL ROOM: 261 sq. ft,  
GARAGE: 1357 sq. ft, DECK: 452 sq. ft, BALCONY: 77 sq. ft,  
PORCH: 60 sq. ft, OPEN TO BELOW: 587 sq. ft  
TOTAL: 5335 sq. ft  
MEASUREMENTS CALCULATED BY V1Photos.COM ARE DEEMED HIGHLY RELIABLE BUT NOT GUARANTEED.



Disclaimer: Sizes and Dimensions are Approximate, Actual May Vary.



**Jamie Flanagan**  
402-980-7972  
jamie.flanagan@exprealty.com

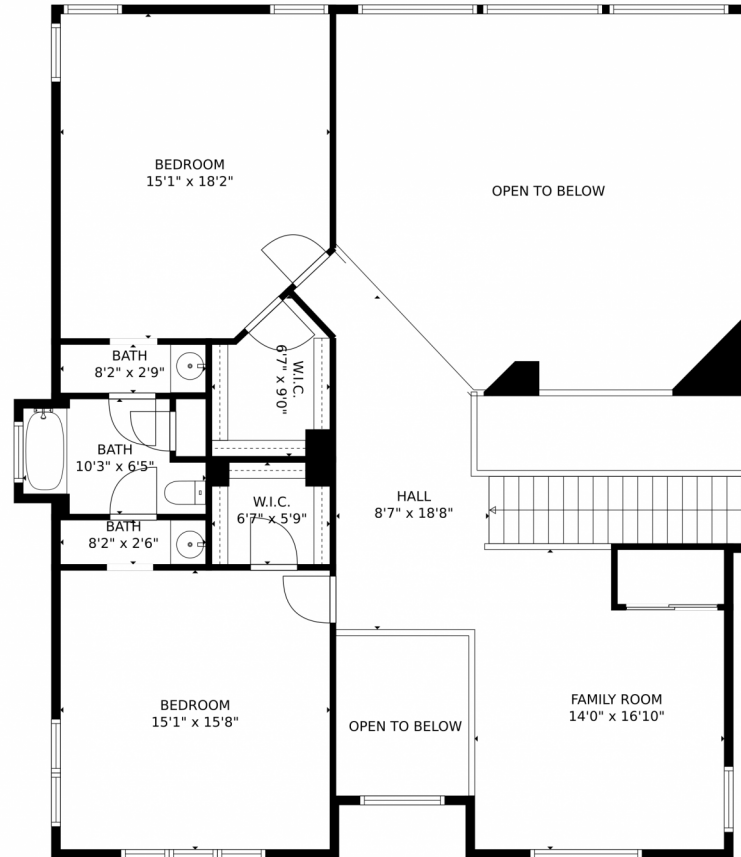


Scan code  
for more  
property  
details





# 425 Upper Elk Valley Drive, Evergreen, CO 80439 – Second Level



GROSS INTERNAL AREA  
Below Ground: 1329 sq. ft, FLOOR 2: 2830 sq. ft, FLOOR 3: 1176 sq. ft  
EXCLUDED AREAS: WORKSHOP: 145 sq. ft, PATIO: 1043 sq. ft, ELECTRICAL ROOM: 261 sq. ft,  
GARAGE: 1357 sq. ft, DECK: 452 sq. ft, BALCONY: 77 sq. ft,  
PORCH: 60 sq. ft, OPEN TO BELOW: 587 sq. ft  
TOTAL: 5335 sq. ft  
MEASUREMENTS CALCULATED BY V1Photos.com ARE DEEMED HIGHLY RELIABLE BUT NOT GUARANTEED.



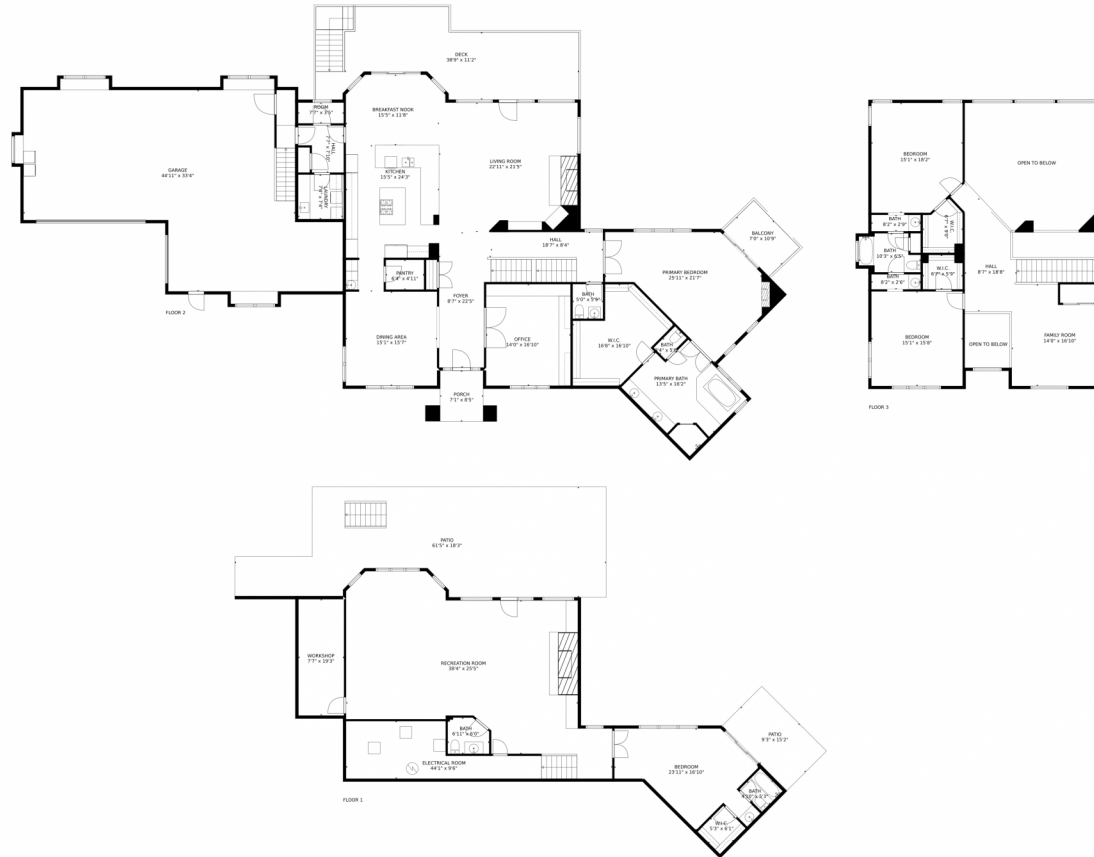
Disclaimer: Sizes and Dimensions are Approximate, Actual May Vary.



**Jamie Flanagan**  
402-980-7972  
jamie.flanagan@exprealty.com



# 425 Upper Elk Valley Drive, Evergreen, CO 80439 – All Levels



GROSS INTERNAL AREA  
Below Ground: 1329 sq. ft, FLOOR 2: 2830 sq. ft, FLOOR 3: 1176 sq. ft  
EXCLUDED AREAS: WORKSHOP: 145 sq. ft, PATIO: 1043 sq. ft, ELECTRICAL ROOM: 261 sq. ft,  
GARAGE: 1357 sq. ft, DECK: 452 sq. ft, BALCONY: 77 sq. ft,  
PORCH: 60 sq. ft, OPEN TO BELOW: 587 sq. ft  
TOTAL: 5335 sq. ft  
MEASUREMENTS CALCULATED BY V1Photos.COM ARE DEEMED HIGHLY RELIABLE BUT NOT GUARANTEED.



Disclaimer: Sizes and Dimensions are Approximate, Actual May Vary.



**Jamie Flanagan**  
402-980-7972  
jamie.flanagan@exprealty.com

