

LUX. DENVER

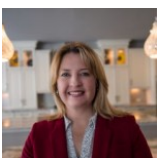
2015 Kalmia Avenue
Boulder, CO 80304



Single Family



3800 SQFT



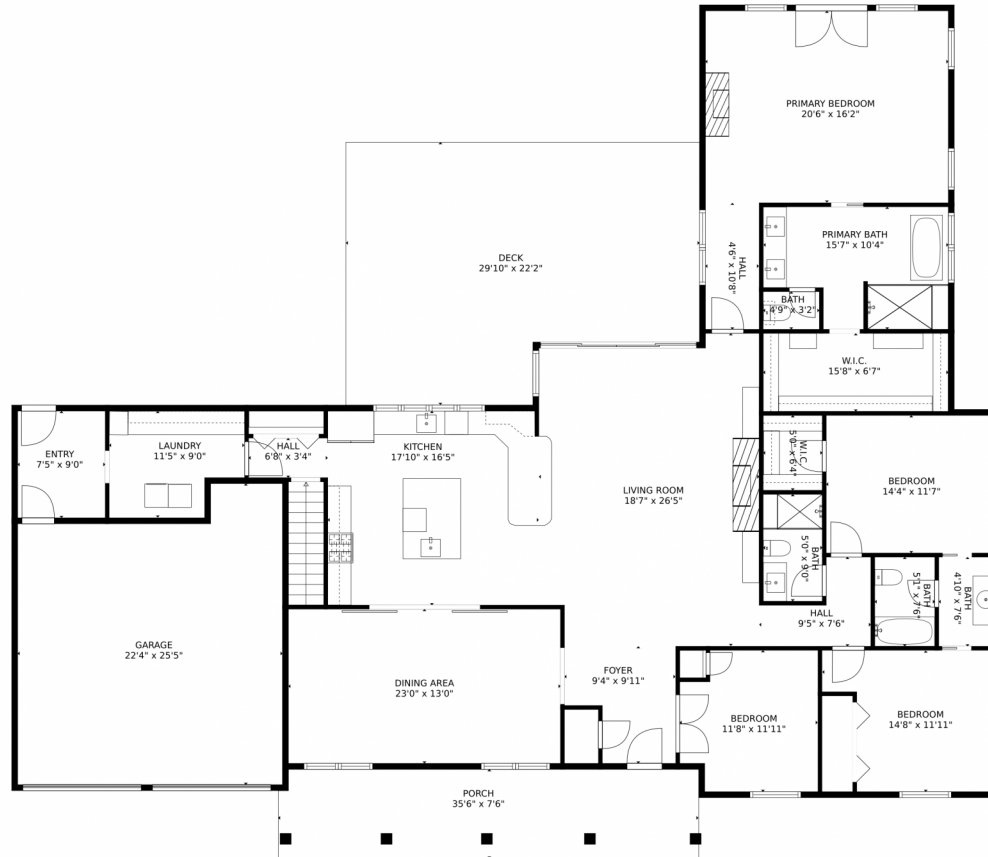
Heather Slump
720-390-8705
heatherslump@gmail.com



Scan code
for more
property
details



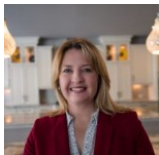
2015 Kalmia Avenue, Boulder, CO 80304 – Main Level



GROSS INTERNAL AREA
Below Ground: 837 sq. ft, FLOOR 2: 2689 sq. ft
EXCLUDED AREAS: STORAGE: 214 sq. ft, UNDEFINED: 15 sq. ft, GARAGE: 513 sq. ft.
DECK: 587 sq. ft, PORCH: 266 sq. ft
TOTAL: 3526 sq. ft
MEASUREMENTS CALCULATED BY V1Photos.COM ARE DEEMED HIGHLY RELIABLE BUT NOT GUARANTEED.



Disclaimer: Sizes and Dimensions are Approximate, Actual May Vary.



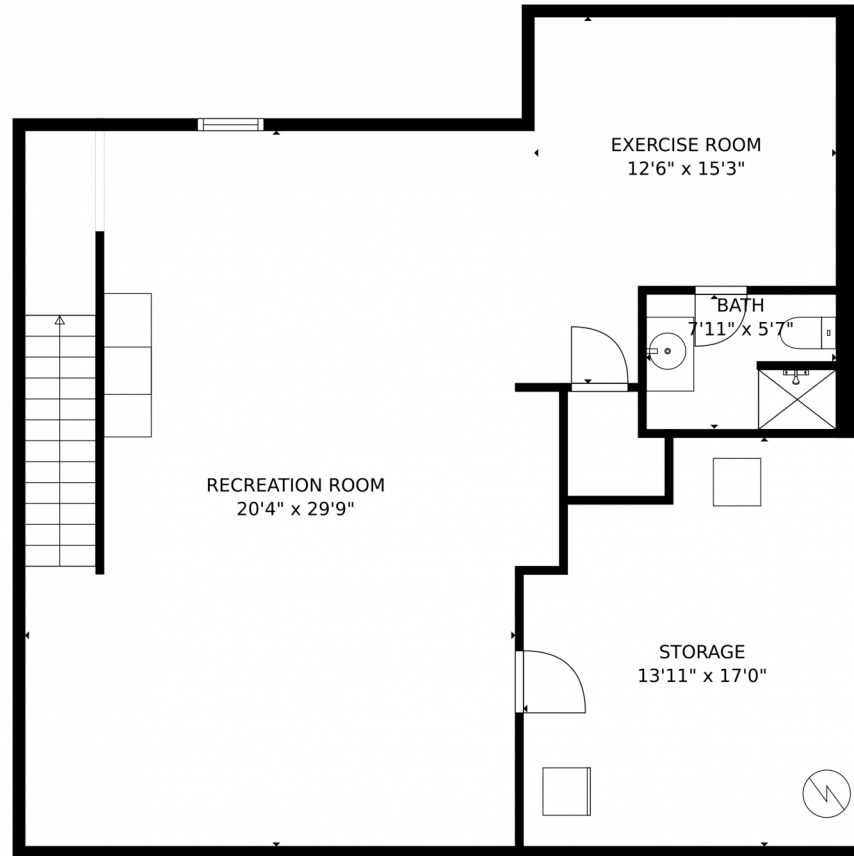
Heather Slump
720-390-8705
heatherslump@gmail.com



Scan code
for more
property
details



2015 Kalmia Avenue, Boulder, CO 80304 – Lower Level



GROSS INTERNAL AREA
Below Ground: 837 sq. ft, FLOOR 2: 2689 sq. ft.
EXCLUDED AREAS: STORAGE: 214 sq. ft, UNDEFINED: 15 sq. ft, GARAGE: 513 sq. ft.
DECK: 587 sq. ft, PORCH: 266 sq. ft.
TOTAL: 3526 sq. ft.
MEASUREMENTS CALCULATED BY V1Photos.COM ARE DEEMED HIGHLY RELIABLE BUT NOT GUARANTEED.



Disclaimer: Sizes and Dimensions are Approximate, Actual May Vary.



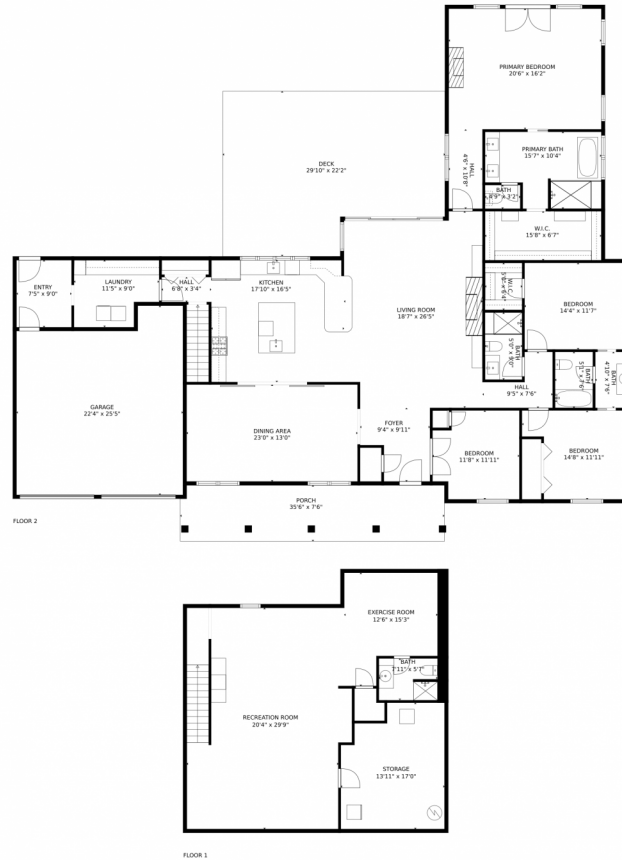
Heather Slump
720-390-8705
heatherslump@gmail.com



Scan code
for more
property
details



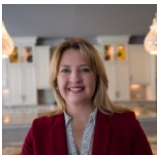
2015 Kalmia Avenue, Boulder, CO 80304 – All Levels



GROSS INTERNAL AREA
Below Ground: 837 sq. ft, FLOOR 2: 2689 sq. ft
EXCLUDED AREAS: STORAGE: 214 sq. ft, UNDEFINED: 15 sq. ft, GARAGE: 513 sq. ft,
DECK: 587 sq. ft, PORCH: 266 sq. ft
TOTAL: 3526 sq. ft
MEASUREMENTS CALCULATED BY V1Photos.COM ARE DEEMED HIGHLY RELIABLE BUT NOT GUARANTEED.



Disclaimer: Sizes and Dimensions are Approximate, Actual May Vary.



Heather Slump
720-390-8705
heatherslump@gmail.com

